



Massachusetts Bay Transportation Authority

MBTA Contract Nos. A90PS02, A90PS04, & A90PS05:
Architectural and Engineering Services for Station and Accessibility
Improvements

Fiscal and Management Control Board

April 13, 2020

John Schwarz

Project History

- The MBTA has nearly 200 elevators serving over 70 locations.
- MBTA's Systemwide Accessibility Department (SWA) identified multiple stations needing replacement and new or redundant elevators
- The locations were prioritized reflecting reliability, criticality, and rectifying known path of travel barriers.
- Station and accessibility improvements are proposed at the following stations: Wellington, Massachusetts Avenue, Jackson Square, Broadway, Davis Square, Arlington, Sullivan Square, and North Station.
- The design work will be done under three professional services contracts.



Project Benefits

- Improve customer experience, safety, and accessibility
- Replace existing elevators
- Provide new and/or redundant elevators
- Upgrade mechanical and electrical systems to support new elevators
- Implement upgrades to fulfill code compliance requirements
- Reduce life cycle maintenance costs
- Upgrade Fire Alarm/Life Safety Systems
- Upgrade station amenities
- Complies with BCIL agreement



Project Scope

The services will be delivered on a Task Order basis by Phase. Project Phases for this project are defined to be:

- Phase II Preliminary Design (15% - 30%)
 - Phase III Design Development (30% - 75%)
 - Phase IV Final Design (75% - PSE)
 - Phase V Bid Phase
 - Phase VI Construction Phase Services
- The contract duration is expected to be 52 months.
- Design and Bid Phase Services are expected to be complete within 22 months.
- Construction Phase Services are expected to be complete 30 months from NTP for construction.



Request of the Fiscal and Management Control Board

Today's board action will provide for Design Phase, Bid Phase and Construction Phase Services for Architectural and Engineering Services for Station and Accessibility Improvements.

Staff request that the Fiscal and Management Control Board authorize the MBTA General Manager, or his designee, to award and execute **MBTA Contract Nos. A90PS02, A90PS04, and A90PS05**: Architectural and Engineering Services for Station and Accessibility Improvements with the following firms:

- A90PS02 with AECOM for an amount not to exceed \$7,551,520
- A90PS04 with Kleinfelder for an amount not to exceed \$6,853,694
- A90PS05 with STV for an amount not to exceed \$10,153,160



Appendix

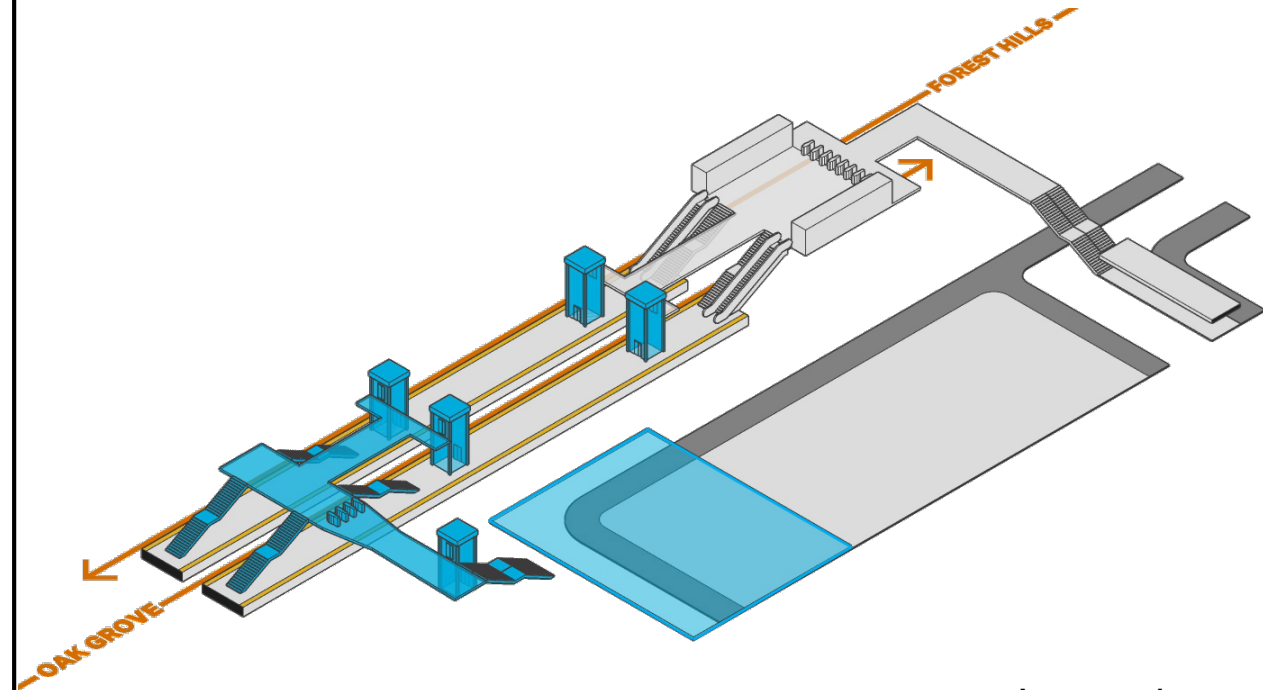
Project Scope Details



A90PS02 Project Scope

The Station and Accessibility Improvements at Wellington will include:

- **Existing Headhouse:** two replacement elevators at each of the two existing center platforms and other accessibility and life safety enhancements.
- **South Headhouse:** A new station entrance with three elevators connecting the south existing parking lot to the two existing center platforms via a new lobby and pedestrian bridge spanning over the Commuter Rail Haverhill Line.



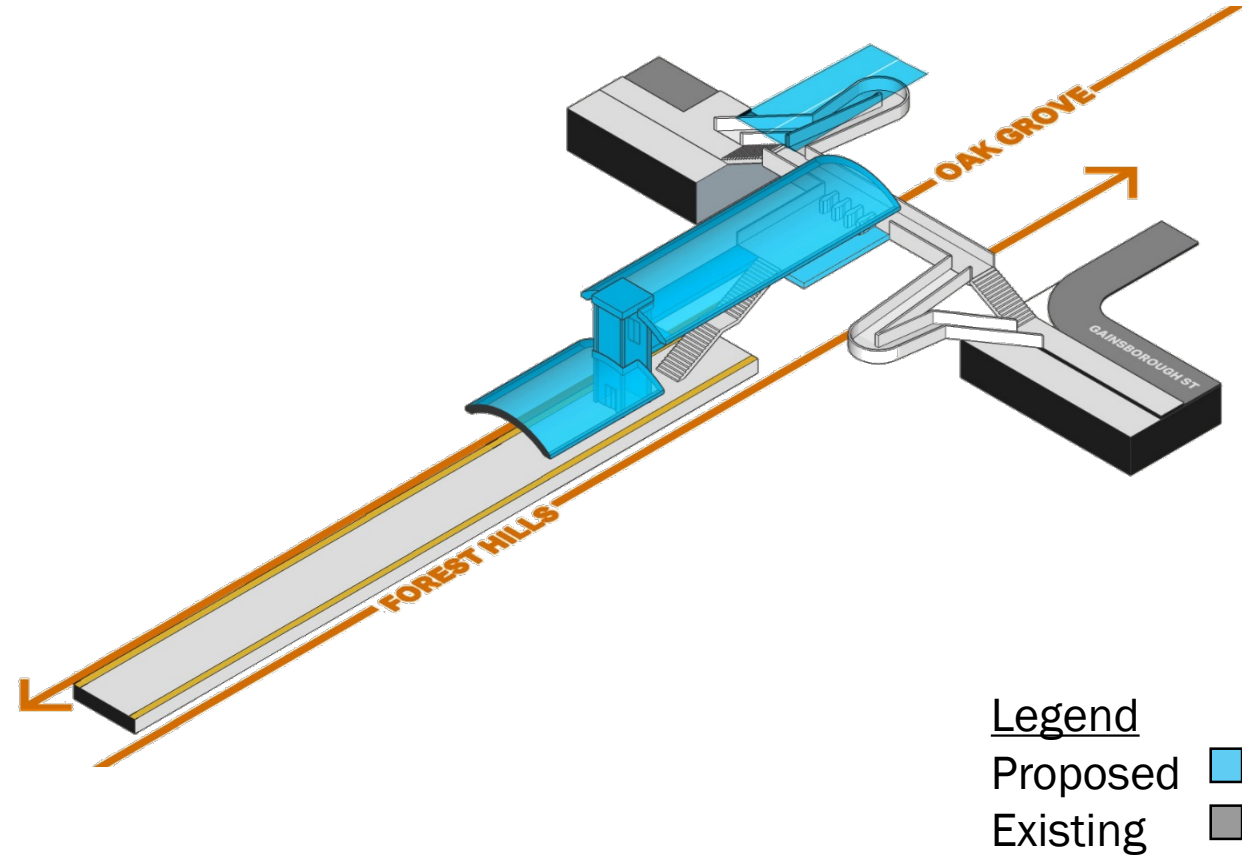
Wellington Station Circulation Diagram



A90PS02 Project Scope

The Station and Accessibility Improvements at Massachusetts Avenue will include:

- **Existing Headhouse:** one replacement elevators at the existing center platform and other accessibility and life safety enhancements.
- **South Headhouse:** A new station entrance built adjacent to the existing pedestrian bridge and leading down to the south end of the existing center platform.

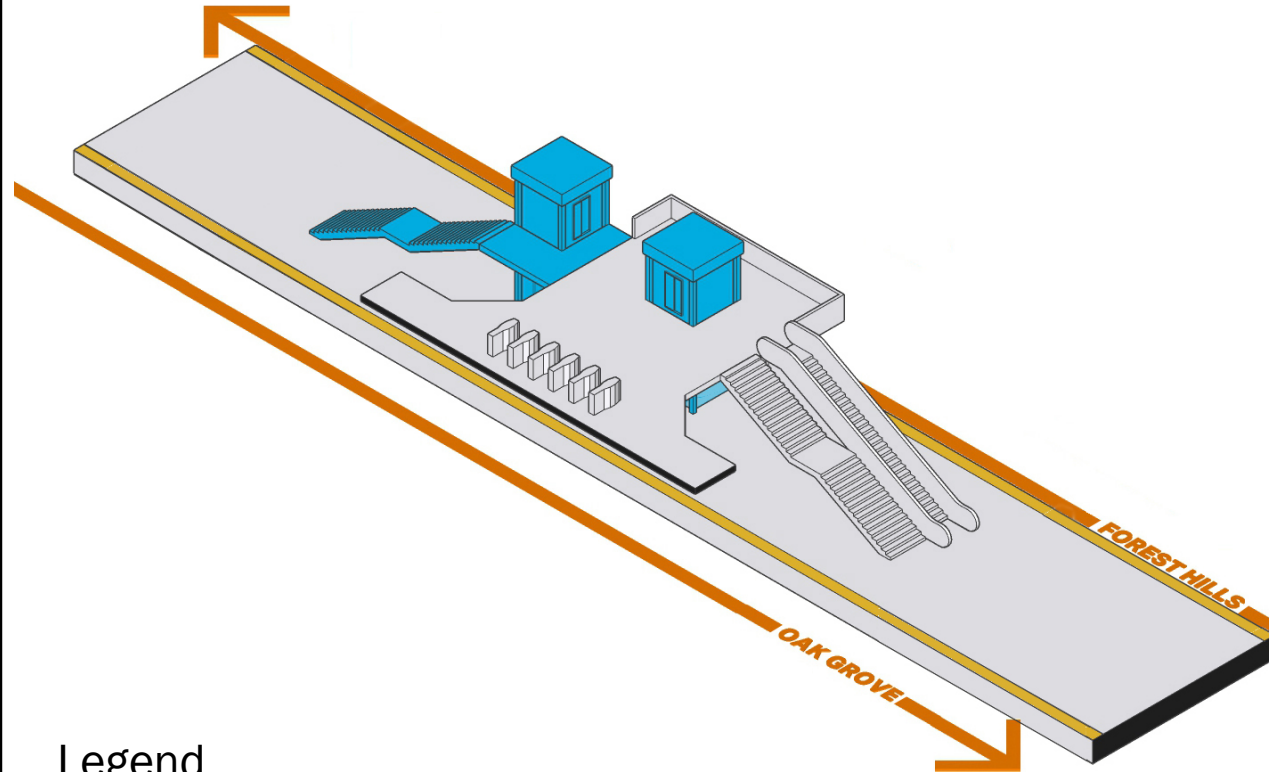


Massachusetts Ave Station Circulation Diagram

A90PS02 Project Scope

The Station and Accessibility Improvements at Jackson Square will include:

- **Existing Headhouse:** one new and one replacement elevator at the main circulation area, localized infrastructure and building shell repairs.
- **Bus Terminal:** optimized bus berths, new station entrance connecting sidewalks and crossings, wayfinding and traffic signage, and repairs to bus canopy.



Legend
Proposed ■
Existing ■

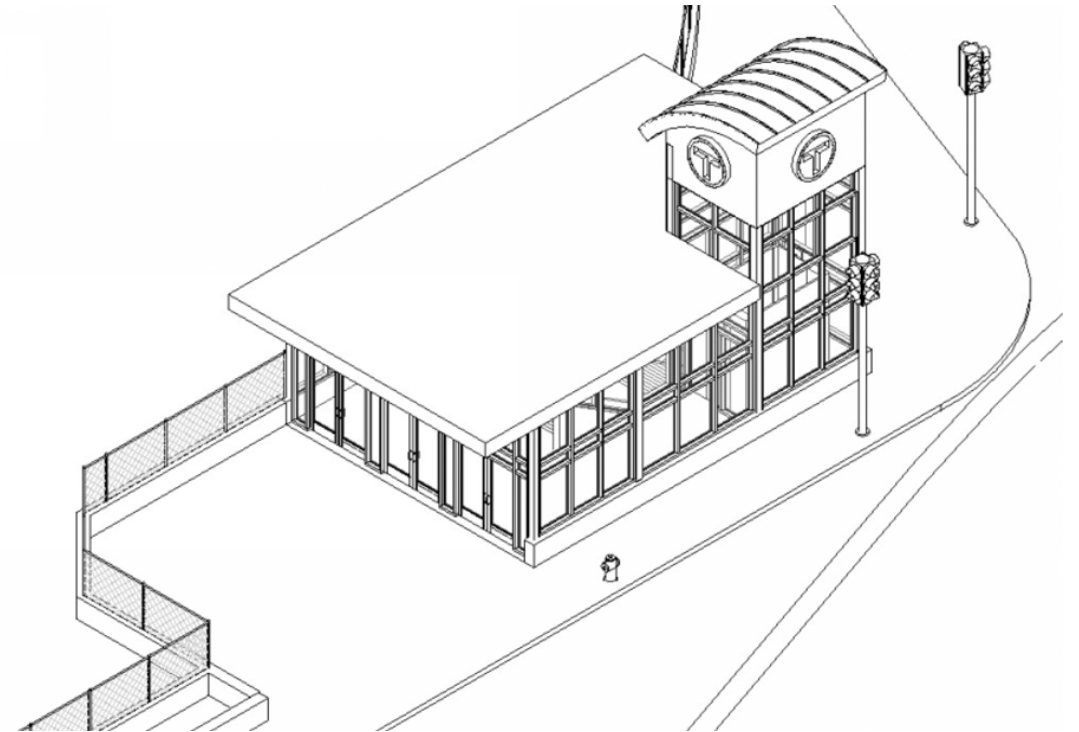
Jackson Square Station Circulation Diagram



A90PS04 Project Scope

The Station and Accessibility Improvements at Broadway will include:

- New station entrance headhouse at the corner of West 4th and Dorchester Ave. in South Boston to provide 2nd means of egress from south end of platform.
- A new mezzanine lobby.
- 2 new elevators and 2 replacement elevators for better resiliency,
- Egress and other code-required life-safety improvements.
- Other station improvements include upgrades to lighting, electrical systems, fire alarm, egress, wayfinding and state of good repairs.



Proposed

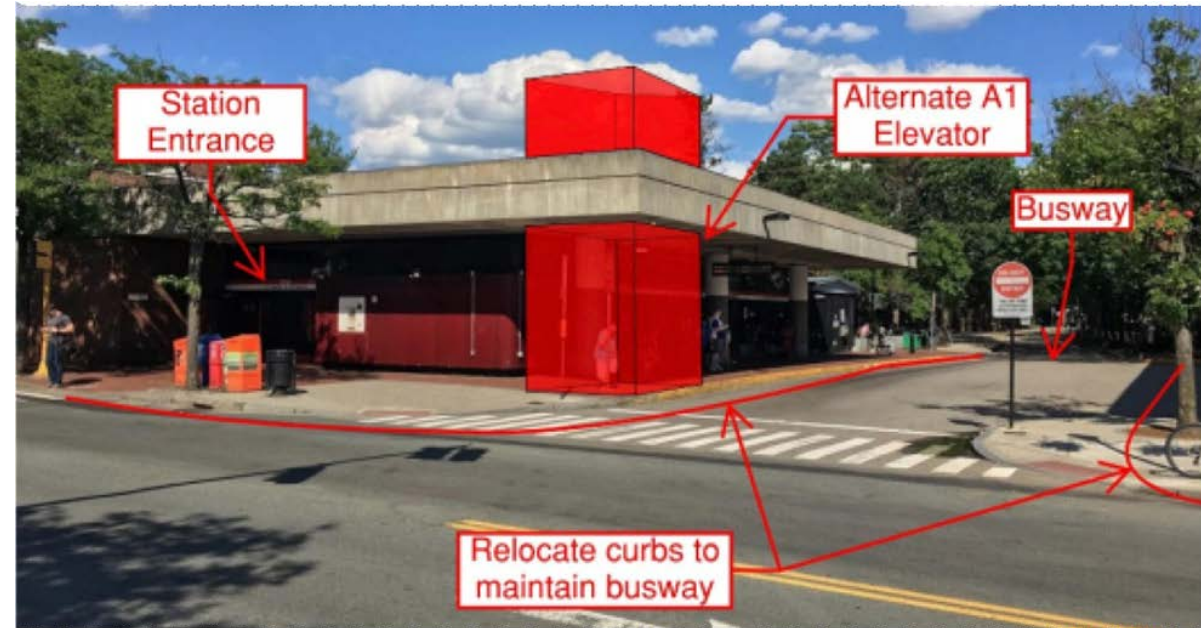
**Broadway Station – New Headhouse at
West 4th and
Dorchester Ave.**



A90PS04 Project Scope

The Station and Accessibility Improvements at Davis will include:

- 2 street level and 2 mezzanine level elevators for better resiliency.
- Egress and other code-required life-safety improvements.
- New elevated walkways to connect the mezzanine to the 2 new street elevators for more efficient rider circulation.
- Other station improvements include upgrades to lighting, electrical systems, fire alarm system, wayfinding, leak repairs in electrical substations and state of good repair work.



Proposed

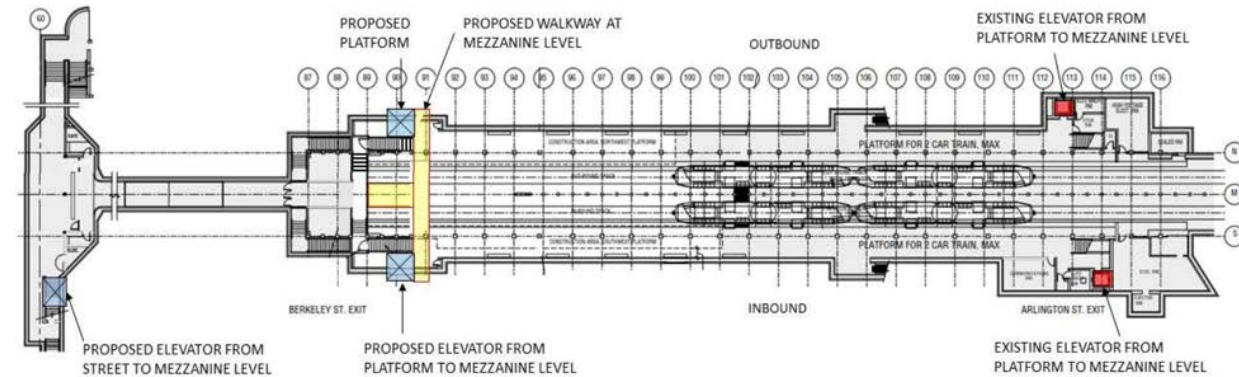
Davis Station - New College Ave. Headhouse



A90PS05 Project Scope

The Station and Accessibility Improvements at Arlington will include:

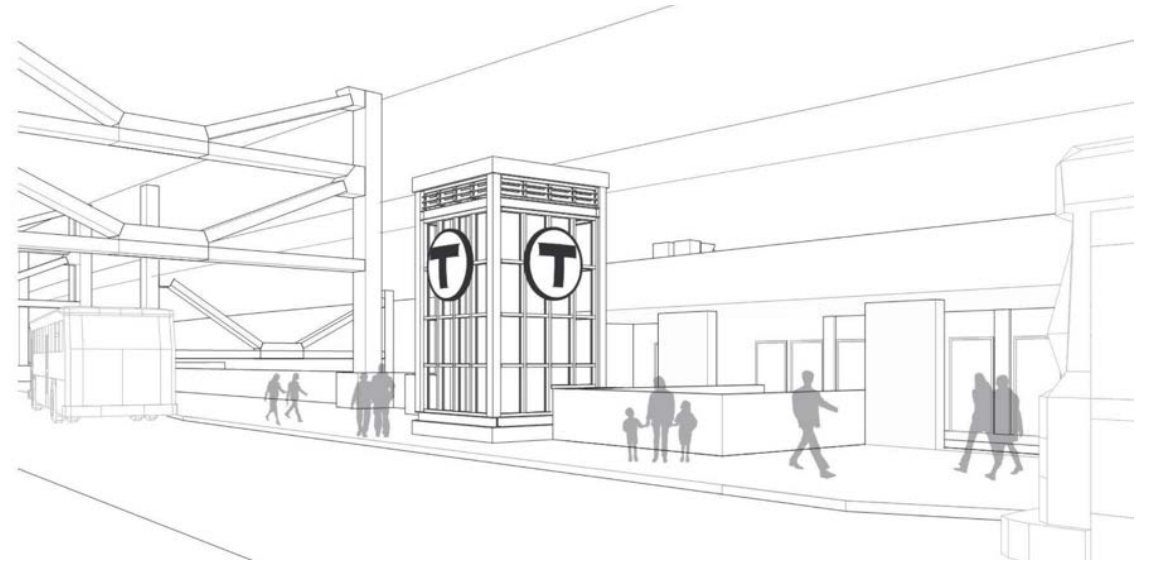
- Three (3) New Elevators & Hoistways
- One (1) New Pedestrian Bridge
- Egress & Code Evaluations
- Street Level Modifications
- Stair Headhouse Upgrades
- Life Safety/Fire Alarm Upgrades
- Waterproofing Evaluations & Repairs
- Structural Deterioration Evaluation
- Wayfinding/Signage Upgrades
- Lighting Upgrades
- Toilet Room Evaluations



A90PS05 Project Scope

The Station and Accessibility Improvements at Sullivan Square will include:

- Three (3) New Elevators & Hoistways
- Two (2) Elevator Replacements
- Two (2) Escalators Modernization
- Two (2) New Pedestrian Bridges
- Egress & Code Evaluations
- Street Level Modifications
- Substation Electrical Equipment Modifications
- Life Safety/Fire Alarm Upgrades
- Waterproofing Evaluations & Repairs
- Structural Deterioration Evaluation
- Wayfinding/Signage Upgrades
- Lighting Upgrades
- Toilet Room Evaluations



A90PS05 Project Scope

The Station and Accessibility Improvements at North Station will include:

- Two (2) New Elevators & Hoistways
- One (1) New Pedestrian Bridge
- Egress & Code Evaluations
- Substation Electrical Equipment Modifications
- Life Safety/Fire Alarm Upgrades
- Waterproofing Evaluations & Repairs
- Limited Structural Deterioration Evaluation
- Limited Wayfinding/Signage Upgrades
- Limited Lighting Upgrades
- Toilet Room Evaluations

