

# Self diagnose and repair guide

## Problem: Flipper cannot detect battery

### Possible root cause:

In rare cases due to extreme conditions of transportation the battery connector fit to the Main board can be affected. In this case it is advised to reconnect the battery and make sure the fit between two connectors is stable.

### Repair workflow:

Required tools:

- Long PH0 screwdriver (other type of screwdriver may damage the screw head, be careful)
- Plastic tweezers or opening pick if available

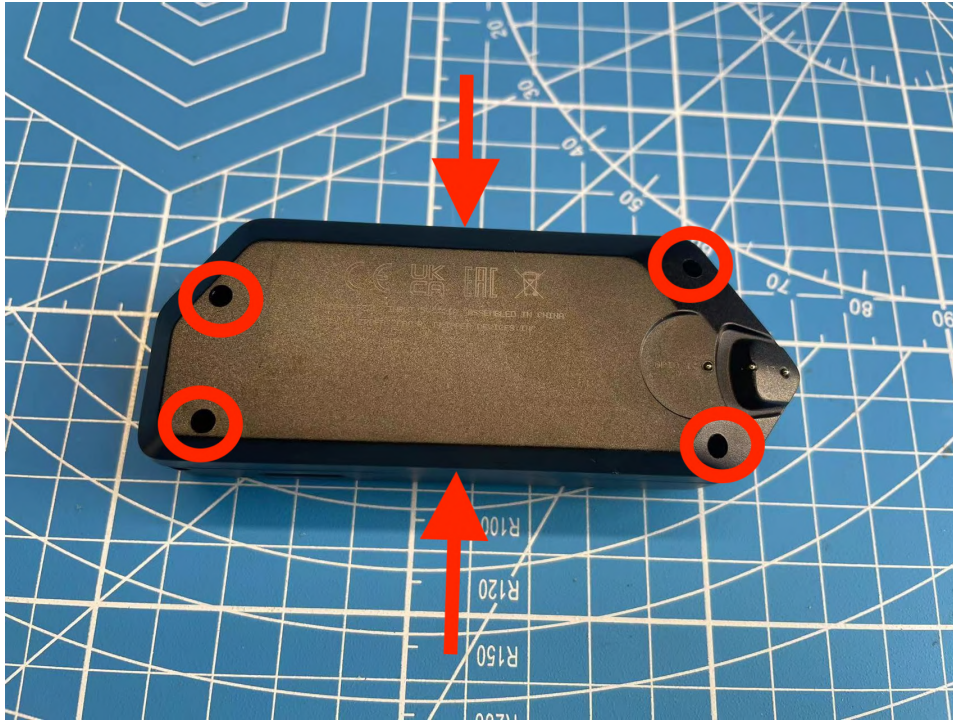
### Step 1

Power-off your Flipper:



### Step 2

Remove 4 screws and press gently in the middle of Top cover's both sides to detach the Bottom cover:

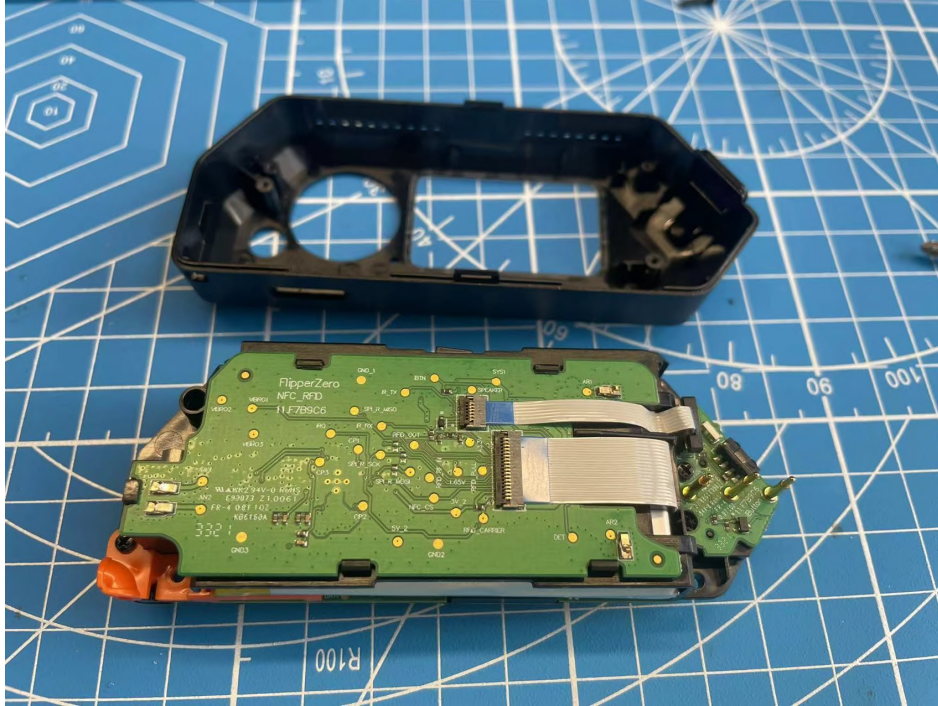


**Step 3**

Remove another 2 more screws and detach the inside part of Flipper from the Top cover:







#### Step 4

Check if the battery connector fits nicely, try to press the wires with your thumb carefully to check if it causes Flipper to power on:



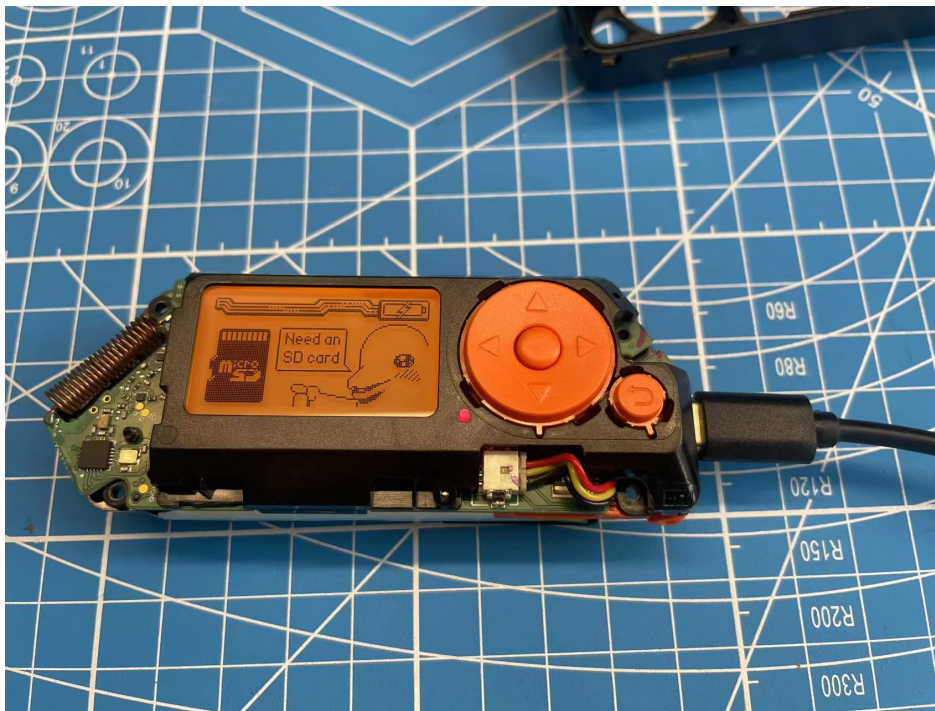
#### Step 5

Try to detach the battery cable from the Main board's connector, using tweezers or other available tool (plastic tweezers or plastic pick would be the best choice):



**Step 6**

Insert the battery cable back to the Main board's connector, check if Flipper can power on and if it is able to charge the battery:



*Step 7*

Repeat steps 1-3 backwards, assembling your Flipper back