



# FACT BOOK 2020



University of  
Pittsburgh

Office of  
Institutional Research

## Foreword

The Office of Institutional Research is pleased to present the University of Pittsburgh *Fact Book 2020*. This annually produced book is intended to be a useful source of information about the University of Pittsburgh. The information provided on these pages reflects much of what Institutional Research reports on behalf of the University, throughout the year. The Fact Book includes the most current information available for either an academic or fiscal year, as well as historical information.

Most of the information included in the Fact Book is compiled by Institutional Research from data sources developed by the office to respond to the planning, budgeting, and governmental compliance requirements of the University. If the source of the data presented is different from Institutional Research, the office providing this information is cited. In regards to these offices, Institutional Research is wholeheartedly grateful for the assistance that they have provided. IR's Director, Bob Goga, along with Information and Reporting Analyst, Diane Drazdzinski, while primarily responsible for content and presentation, are also grateful for the valuable support and significant contribution provided by IR Project Director, Rob Rodgers.

We hope that you find the Fact Book useful and informative. We encourage your comments and suggestions on how to improve future editions.



## GENERAL INFORMATION



## MISSION STATEMENT

The University of Pittsburgh, founded in 1787, is one of the oldest institutions of higher education in the United States. As one of the nation's distinguished comprehensive universities, the resources of the University constitute an invaluable asset for the intellectual, economic, and social enrichment of Pennsylvania, while the international prestige of the University enhances the image of Pennsylvania throughout the world.

The University's mission is to:

- provide high-quality undergraduate programs in the arts and sciences and professional fields, with emphasis upon those of special benefit to the citizens of Pennsylvania;
- offer superior graduate programs in the arts and sciences and the professions that respond to the needs of Pennsylvania, as well as to the broader needs of the nation and the world;
- engage in research, artistic, and scholarly activities that advance learning through the extension of the frontiers of knowledge and creative endeavor;
- cooperate with industrial and governmental institutions to transfer knowledge in science, technology, and health care;
- offer continuing education programs adapted to the personal enrichment, professional upgrading, and career advancement interests and needs of adult Pennsylvanians; and
- make available to local communities and public agencies the expertise of the University in ways that are consistent with the primary teaching and research functions and contribute to social, intellectual, and economic development in the Commonwealth, the nation, and the world.

The trustees, faculty, staff, students, and administration of the University are dedicated to accomplishing this mission, to which they pledge their individual and collective efforts, determined that the University shall continue to be counted among the prominent institutions of higher education throughout the world.

Source: Office of the Secretary, approved by the University of Pittsburgh Board of Trustees, February 1995.

## GUIDE TO FACT BOOK DEFINITIONS

For the most part, universities share in the terminology used to describe enrollment, employment, and indeed, all other facets of a university's activities. However, there are nuances that are peculiar to each. The definitions that are presented here reflect the taxonomy used by the University of Pittsburgh, and as such are referenced here in the *Fact Book*.

---

### **Academic Rank**

A categorization which includes: Professor, Associate Professor, Assistant Professor, Instructor, Lecturer, and Other, with that last category used for faculty who are Librarians, Scholars, and Teachers.

### **Academic Year**

This is the year that begins on September 1 and then ends on August 31. Comprising this twelve-month period is the Fall Term, which runs from late August to December; the Spring Term, which runs from January to April; and the Summer Term, which runs from May to August. Summer Sessions run concurrently with the Summer Term.

### **Campus**

This is one of the five geographic locations of the University of Pittsburgh. In addition to the Pittsburgh Campus, the regional campuses of the University are located in: Johnstown, Greensburg, Titusville, and Bradford.

### **Certificate Category**

Certificate programs are categorized respective to the academic level of the program. As such, they are referred to either as an Undergraduate Certificate or as a Graduate Certificate.

### **Certificate Program**

An academic program whose completion is recognized by conferring upon the student an award referred to as a certificate.

### **Degree Category**

A degree classification which includes: Associate, Baccalaureate, Master's, Doctorate-Research/Scholarship, and Doctorate-Professional Practice.

### **Degree Program**

An academic program whose completion is recognized by conferring upon the student an award referred to as a degree.

### **Degree Type**

A specific degree within a degree category, for example: BA, MA, PhD, MD, and so on.

### **Fiscal Year**

The year begins on July 1 and then ends on June 30.

### **Full-Time Equivalent (FTE) Enrollment**

A calculated number derived by adding the number of full-time students to 40 percent of the number of part-time students.

## GUIDE TO FACT BOOK DEFINITIONS (continued)

### **Instructional Faculty**

University faculty associated with teaching activities, as defined by the American Association of University Professors.

### **Level**

#### ***Graduate Students***

Those students enrolled in programs leading to a graduate degree or certificate. Also included are those students who are enrolled for graduate coursework but who are not seeking a graduate degree or certificate.

#### ***Graduate Students (continued)***

Doctoral students are enrolled in programs that are classified as follows:

##### ***Doctorate-Professional Practice***

These degree programs are the professional degree programs of the School of Medicine (MD), the School of Dental Medicine (DMD), the School of Pharmacy (PharmD), the School of Law (JD), the School of Nursing (DNP), the School of Health and Rehabilitation Sciences (AUD, DPT, CSCD), and the School of Education (EdD – approved in June 2014).

##### ***Doctorate-Research/Scholarship***

Degree programs in this classification are all doctoral degree programs other than those identified as Doctorate-Professional Practice.

#### ***Undergraduate Students***

Those students enrolled in programs leading to an undergraduate degree or certificate. Also included are students enrolled for undergraduate coursework but who are not seeking an undergraduate degree or certificate.

### **Postdoctoral Associate**

This is a transitional position and is viewed as preparatory for an academic and or research career. Individuals in this classification are considered employees of the University.

### **Postdoctoral Scholar**

This is a transitional position and is viewed as preparatory for an academic and or research career. Individuals in this position are paid from a University grant that prohibits the individual from being considered an employee, or are paid from a grant whose funding source does not permit collection of a fringe rate, or are being paid a stipend by an agency outside the University.

### **Race**

#### ***For Faculty and Staff***

The U.S. Department of Labor classification wherein an individual's race is reported in terms of the following: Black or African American, American Indian or Alaskan Native, Asian, Native Hawaiian or Other Pacific Islander, Hispanic or Latino, White, and Two or More Races.

#### ***For Students***

The U. S. Department of Education's classification taxonomy wherein an individual's race is reported in terms of the following: International, Black or African American, American Indian or Alaskan Native, Asian, Native Hawaiian or Other Pacific Islander, Hispanic or Latino, White, and Two or More Races.

## GUIDE TO FACT BOOK DEFINITIONS (continued)

### **Research Associate**

This is an appointment that involves substantially full-time research or scholarship, is renewable, and is not viewed as preparation for another position. These Individuals are considered employees of the University.

### **School**

This is an academic unit that is responsible for the administration of the institution's academic programs.

### **Status**

#### ***Full-time students***

Undergraduate students registered for 12 or more credits in a term. Graduate students and first professional students registered for 9 or more credits in a term.

#### ***Part-time students***

Undergraduate students registered for fewer than 12 credits in a term. Graduate students and first professional students registered for fewer than 9 credits in a term.

### **Tenure**

A status accorded to those members of the University's faculty who have demonstrated high ability and achievement in their dedication to the growth of human knowledge.

## MEMBER INSTITUTIONS OF THE ASSOCIATION OF AMERICAN UNIVERSITIES

The University of Pittsburgh is a member of the Association of American Universities (AAU), a prestigious organization of 65 preeminent doctorate-granting research institutions in the United States and Canada. The University identifies the AAU as an appropriate peer group for statistical and policy comparisons. The following table provides an alphabetical listing of the 38 public and 27 private universities that comprise the membership of the organization. The table also indicates the state or country in which each institution is located (the abbreviation CN denotes the two Canadian schools), along with the year of admission to the AAU.

### AAU Member Institutions: Public

Georgia Institute of Technology.....	GA.....	2010	University of California, Berkeley .....	CA.....	1900	University of Michigan .....	MI.....	1900
Indiana University .....	IN.....	1909	University of California, Davis .....	CA.....	1996	University of Minnesota .....	MN.....	1908
Iowa State University .....	IA.....	1958	University of California, Irvine.....	CA.....	1996	University of Missouri .....	MO.....	1908
McGill University .....	CN.....	1926	University of California, Los Angeles .....	CA.....	1974	University of North Carolina .....	NC.....	1922
Michigan State University.....	MI.....	1964	University of California, San Diego .....	CA.....	1982	University of Oregon.....	OR.....	1969
Ohio State University.....	OH.....	1916	University of California, Santa Barbara.....	CA.....	1995	University of Pittsburgh.....	PA.....	1974
Pennsylvania State University .....	PA.....	1958	University of California, Santa Cruz .....	CA.....	2019	University of Texas .....	TX.....	1929
Purdue University.....	IN.....	1958	University of Colorado .....	CO.....	1966	University of Toronto.....	CN.....	1926
Rutgers, The State University of New Jersey.....	NJ.....	1989	University of Florida .....	FL.....	1985	University of Utah .....	UT.....	2019
Stony Brook University - SUNY <sup>1</sup> .....	NY.....	2001	University of Illinois.....	IL.....	1908	University of Virginia.....	VA.....	1904
Texas A&M University.....	TX.....	2001	University of Iowa.....	IA.....	1909	University of Washington.....	WA.....	1950
University at Buffalo - SUNY <sup>1</sup> .....	NY.....	1989	University of Kansas.....	KS.....	1909	University of Wisconsin .....	WI.....	1900
University of Arizona.....	AR.....	1985	University of Maryland .....	MD.....	1969			

### AAU Member Institutions: Private

Boston University.....	MA.....	2012	Duke University.....	NC.....	1938	Stanford University.....	CA.....	1900
Brandeis University.....	MA.....	1985	Emory University.....	GA.....	1995	Tulane University.....	LA.....	1958
Brown University.....	RI.....	1933	Harvard University.....	MA.....	1900	University of Chicago.....	IL.....	1900
California Institute of Technology.....	CA.....	1934	Johns Hopkins University.....	MD.....	1900	University of Pennsylvania.....	PA.....	1900
Carnegie Mellon University.....	PA.....	1982	Massachusetts Institute of Technology.....	MA.....	1934	University of Rochester.....	NY.....	1941
Case Western Reserve University .....	OH.....	1969	New York University .....	NY.....	1950	University of Southern California.....	CA.....	1969
Columbia University.....	NY.....	1900	Northwestern University.....	IL.....	1917	Vanderbilt University.....	TN.....	1950
Cornell University.....	NY.....	1900	Princeton University .....	NJ.....	1900	Washington University.....	MO.....	1923
Dartmouth College.....	NH.....	2019	Rice University.....	TX.....	1985	Yale University.....	CT.....	1900

<sup>1</sup>State University of New York.





**PITTSBURGH CAMPUS MAP**

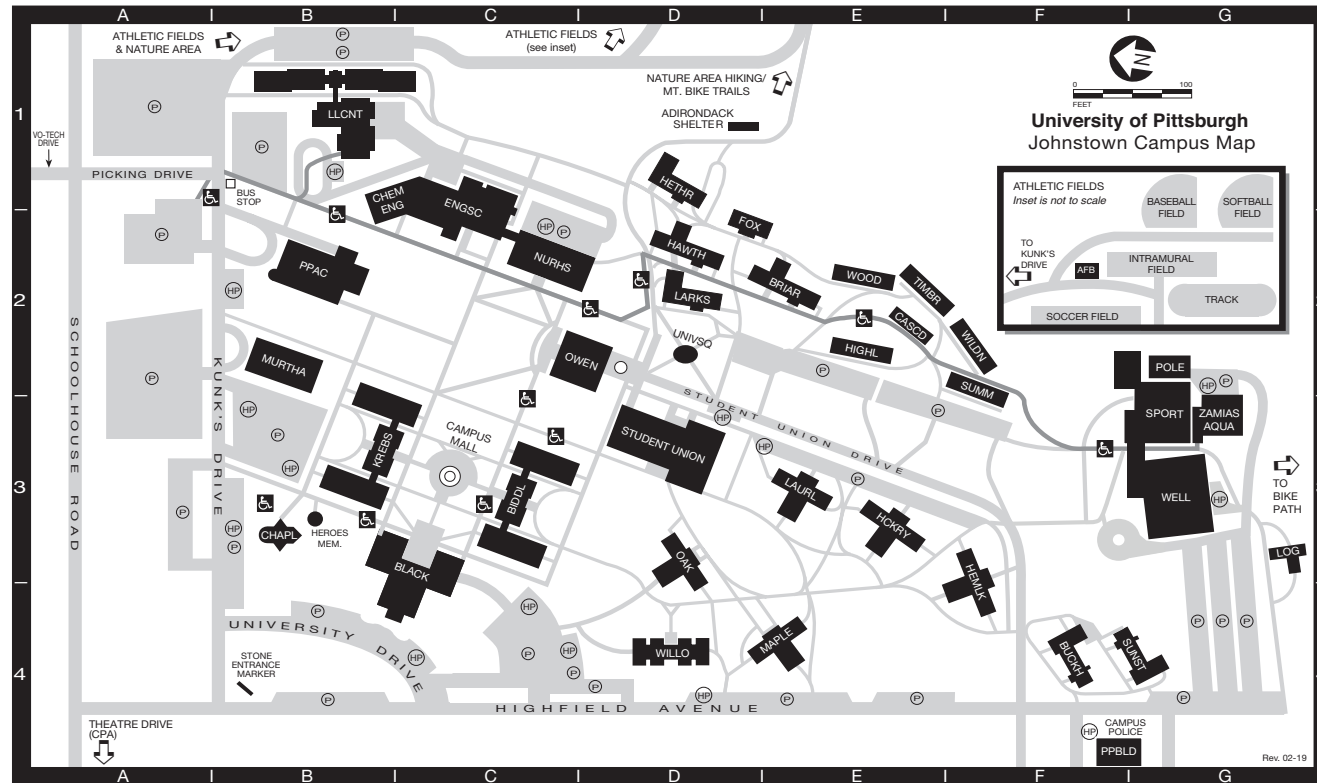
<b>Allen Hall</b> .....	ALLEN	D2	<b>Fraternity Housing Complex</b> .....	FRAT	B1	<b>PRES</b> (map abbreviation for Bellefield Presbyterian Church)	
<b>Alumni Hall</b> .....	ALUM	E2	<b>Frick Fine Arts Building</b> .....	FKART	C2	<b>UPMC Presbyterian</b> .....	PRESB C3
(Office of Admissions and Financial Aid, Office of Alumni Relations)			<b>Gardner Steel Conference Center</b> .....	GSCC	D2	<b>UPMC Presbyterian South Tower</b> .....	PRESB-S C3
<b>Amos Hall</b> (residence hall) .....	AMOS	E3	<b>Heinz Memorial Chapel</b> .....	HEINZ	F2	<b>Public Health</b> .....	PUBHL D3
<b>BAPST</b> (map abbreviation for First Baptist Church)			<b>Hill Building</b> .....	HILL	E3	(Crabtree Hall and Graduate School of Public Health)	
<b>Barco Law Building</b> .....	LAW	E3	<b>Hillman Library</b> .....	HLMAN	C4	<b>Rand Building</b> .....	RAND G1
<b>Bellefield Hall</b> .....	BELLH	G2	<b>Hilton Garden Inn</b> .....	HILTON	C4	<b>Ruskin Hall</b> .....	RUSKN F1
<b>Bellefield Presbyterian Church</b> .....	PRES	D3	<b>Holland Hall</b> (residence hall) .....	HOLLD	E3	<b>Ryan Catholic Newman Center</b> .....	CATHO F1
<b>Bellefield Towers</b> .....	BELLT	F1	<b>Information Sciences Building</b> .....	IS	F1	(The Oratory) <i>off map</i>	
<b>Benedum Hall</b> .....	BENDM	D3	<b>Iroquois Building</b> .....	IROQU	D4	<b>St. Paul Cathedral</b> .....	SPAUL G1
<b>Thomas E. Starzl Biomedical Science Tower (Tower 1) and Biomedical Science Tower 2</b> .....	BSTWR	B3	<b>Jewish University Center</b> .....	JUC	G2	<b>Salk Hall</b> .....	SALK B3
<b>Biomedical Science Tower 3</b> .....	BST3	C4	<b>K. Leroy Irvis Hall</b> (residence hall) .....	IRVIS	C2	<b>Scaife Hall</b> .....	SCAIF C3
<b>Bouquet Gardens</b> .....	BQGRS	E4	<b>Kaufmann Medical Building</b> .....	KAU	C4	<b>Schenley Park</b> .....	G4
(residence halls A–J)			<b>Langley Hall</b> .....	LANGY	E1	<b>Schenley Place</b> .....	F1
<b>Brackenridge Hall</b> (residence hall, The Pitt Shop) ..	BRACK	E3	<b>LAW</b> (map abbreviation for Barco Law Building)			<b>Schenley Plaza</b> .....	F3
<b>Bruce Hall</b> (residence hall) .....	BRUCE	E3	<b>Lawrence Hall</b> .....	LAWRN	E3	<b>Schenley Quadrangle</b> .....	E3
<b>Building 5</b> .....	BLDG5	C2	<b>Learning Research and Development Center</b> .....	LRDC	C2	<b>Sennott Square</b> .....	SENSQ D4
<b>Carnegie Library of Pittsburgh, Carnegie Museums of Pittsburgh</b> .....	CARNG	G3	<b>Litchfield Towers</b> (residence halls A, B, C)	TOWRS	D3	<b>Soldiers &amp; Sailors Memorial Hall &amp; Museum</b> .....	SOSAM D2
<b>Cathedral of Learning</b> .....	CL	F2	<b>Loeffler Building</b> .....	LOEFF	D4	<b>Space Research Coordination Center</b> .....	SRCC D2
<b>CATHO</b> (map abbreviation for Ryan Catholic Newman Center)			<b>Log Cabin</b> .....	LOGCB	F2	<b>Stephen Foster Memorial</b> .....	STEPH F2
<b>Center for Bioengineering</b> <i>off map</i> .....	CNBIO	B4	<b>Lothrop Hall</b> (residence hall) .....	LOTHP	C3	<b>Sutherland Hall</b> (residence hall) .....	SUTHD B1
<b>Center for Sports Medicine and Rehabilitation</b> <i>off map</i> .....	CSMR	B4	<b>Lutheran University Center</b> .....	LUC	G2	<b>Thackeray Hall</b> (registration) .....	THACK D2
<b>Charles L. Cost Sports Center</b> .....	COST	A1	<b>Magee-Womens Hospital</b> .....	MAGEE	B5	<b>Thaw Hall</b> .....	THAW D2
<b>CHDEV</b> (map abbreviation for University Child Development Center)			<b>Mark A. Nordenberg Hall</b> .....	NORD	D3	<b>Thomas Detre Hall of the Western Psychiatric Institute and Clinic</b> .....	TDH C2
<b>Chevron Science Center</b> .....	CHVRN	D1	(residence hall, Student Health Service)			<b>TOWRS</b> (map abbreviation for Litchfield Towers)	
<b>Clapp Hall</b> .....	CLAPP	F1	<b>McCormick Hall</b> (residence hall) .....	MCCOR	E3	<b>Trees Hall</b> (athletic facilities) .....	TREES A2
<b>Community of Reconciliation Building</b> .....	CR	F1	<b>Medical Arts Building</b> .....	MDART	D3	<b>University Center (UPMC)</b> .....	UCTR E1
<b>Craig Hall</b> .....	CRAIG	G1	<b>Mellon Institute</b> .....	MELLI	F1	<b>University Child Development Center</b> <i>off map</i> .....	CHDEV G1
<b>Craig Square</b> .....	CRGSQ	G2	(Pittsburgh Supercomputing Center)			<b>University Club</b> .....	UCLUB D2
<b>Crawford Hall</b> .....	CRAWF	E1	<b>Melwood Maintenance Building</b> <i>off map</i> .....	MELWD	G1	<b>University Public Safety Building</b> .....	UPSB C5
<b>Darragh Street Apartment Complex</b> .....	DSAC	A3	<b>Mervis Hall</b> .....	MERVS	F4	<b>University Store on Fifth</b> .....	USOF E3
<b>Eberly Hall</b> .....	EBERL	D1	<b>UPMC Montefiore</b> .....	MONF	B4	(Book Center, Copy Cat)	
<b>Engineering Auditorium</b> .....	ENGUD	D2	<b>Music Building</b> .....	MUSIC	F1	<b>University Technology Development Center</b> .....	UTDC G1
<b>Eureka Building</b> .....	EURKA	C5	<b>O'Hara Student Center</b> .....	OSC	D2	<b>VA Pittsburgh Healthcare System—University Drive Division</b> .....	VA B1
<b>Eye and Ear Institute</b> .....	EEL	C3	<b>Old Engineering Hall</b> .....	OEH	D2	<b>VALE</b> (map abbreviation for Parkvale Building)	
<b>Falk Medical Building</b> .....	FALKC	C3	<b>Oxford Building</b> (3501 Forbes Avenue) .....	OXFRD	C4	<b>Van de Graaff Building</b> .....	VNGRF D2
<b>Falk School</b> .....	FALKS	C1	<b>Panther Hall</b> (residence hall) .....	PANTH	B2	<b>Victoria Building</b> .....	VICTO C4
<b>First Baptist Church</b> .....	BAPST	F1	<b>Park Plaza</b> .....	PLAZA	G1	<b>Webster Hall</b> .....	WEBSR F1
(United Campus Ministry)			<b>Parkvale Building</b> .....	VALE	D4	<b>Wesley W. Posvar Hall</b> .....	WWPH E4
<b>Fitzgerald Field House</b> .....	FHOUS	A2	<b>PAVLN</b> (map abbreviation for Forbes Pavilion)			<b>Western Psychiatric Institute and Clinic</b> (see Thomas Detre Hall)	
<b>Forbes Craig Apartments</b> .....	FBCRG	G2	<b>The John M. and Gertrude E. Petersen Events Center</b> .....	PCNTR	B2	<b>William Pitt Union</b> .....	WPU E3
<b>Forbes Oakland Building</b> .....	FOBLD	B5	<b>Petersen Sports Complex</b> .....	PSCOM	A2	<b>Wyndham Pittsburgh University Center</b> .....	WYNUC E1
<b>Forbes Pavilion</b> .....	PAVLN	C4	<b>Pharmacy Administration</b> .....	PHRMA	C3		
(Forbes Hall [residence hall]; Department of Parking, Transportation, and Services)			<b>Pitt Sports Dome</b> .....	DOME	A1		
<b>Forbes Tower</b> .....	FRTOW	D4	<b>Pittsburgh Athletic Association</b> .....	PAA	E2		
			<b>Pittsburgh Board of Education</b> .....	PBE	G2		
			<b>Pittsburgh Science and Technology Academy</b> .....	FRICK	D3		
			<b>Post Office</b> (Oakland Branch) .....	POST	F4		

 Parking •  Library in Building

 Metered Parking

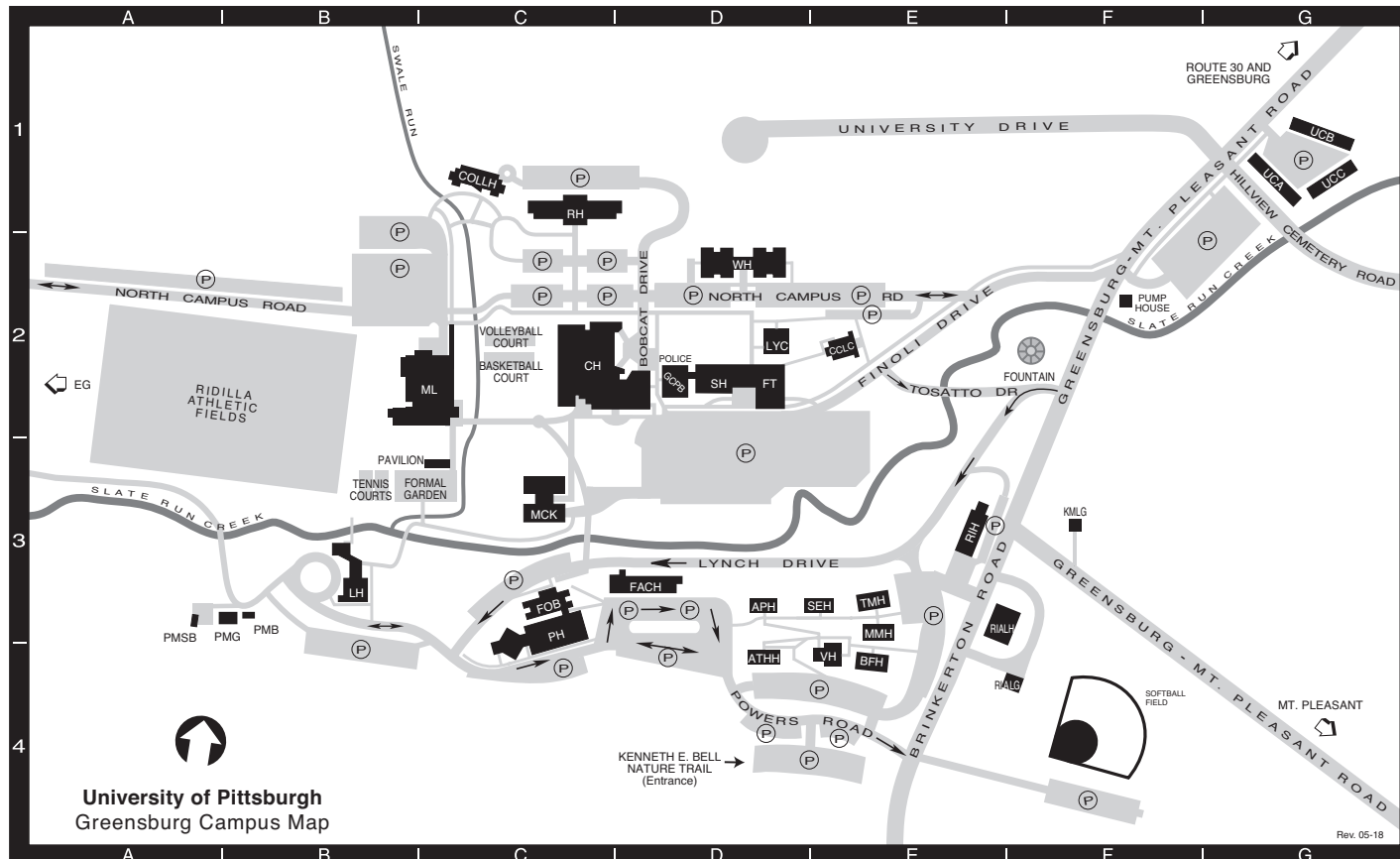
 Accessible Parking available in University parking lots.

JOHNSTOWN CAMPUS MAP



<b>Athletics Fields</b> ..... (see insert)	<b>Chemical Engineering</b> ..... CHEM ENG B1	<b>Log Cabin</b> ..... LOG G3	<b>Student Union</b> ..... UNION D2
<b>Athletic Field Building</b> ..... AFB I2	<b>College Park Apartments</b> (off map)..... CPA A4 (located at intersection of Schoolhouse Road and Theatre Drive)	<b>Maple Hall</b> (residence hall)..... MAPLE E4	(Book Center, Career Services, Disability Services, Food Services, Health and Counseling Services, Housing and Residence Life, ID Center, International Services, Mail Services, Student Activities, Student Affairs, Student Organizations)
<b>Biddle Hall</b> ..... BIDDL C3 (Business and Enterprise, Education, Humanities, Allied Health)	<b>Engineering and Science Building</b> ..... ENGSC C1 (Engineering, Natural Sciences)	<b>John P. Murtha Center for Public Service and National Competitiveness</b> ..... MURTHA B2	<b>Summit Manor</b> (residence hall) ..... SUMM F2
<b>Blackington Hall</b> ..... BLACK C3 (Academic Affairs, Admissions, Advanced and Continuing Education, Alumni Relations, Business Office, Computer Science, Title IX/Equity and Inclusion, Finance and Administration, Financial Aid, Human Resources, Institutional Advancement and Community Relations, Marketing, MountainCat Veterans Program, MSW Program, President, Purchasing, Registrar, Technology Support)	<b>Foxfire Lodge</b> (residence hall) ..... FOX D1	<b>Nursing and Health Sciences Building</b> ..... NURHS C2	<b>Sunset Lodge</b> (residence hall) ..... SUNST G4
<b>Briar Lodge</b> (residence hall) ..... BRIAR E2	<b>Hawthorne Lodge</b> (residence hall) ..... HAWTH D2	<b>Oak Hall</b> (residence hall) ..... OAK D3	<b>Timberline Manor</b> (residence hall) ..... TIMBR E2
<b>Buckhorn Lodge</b> (residence hall) ..... BUCKH F4	<b>Heather Lodge</b> (residence hall) ..... HETHR D1	<b>Owen Library</b> ..... OWEN D2 (Academic Success Center, Faculty Resource Center, Library Offices, Printing Services, Information Technology, Technical/User Services)	<b>University Square</b> ..... UNIVSQ D2
<b>Campus Mall</b> ..... C3	<b>Hemlock Hall</b> (residence hall) ..... HEMLK F3	<b>Pasquerilla Performing Arts Center</b> ..... PPAC B2 (Arts Center Office, Southern Alleghenies Museum Of Art, Theatre Department)	<b>Wellness Center</b> ..... WELL G3
<b>Campus Police</b> ..... PPBLD F4	<b>Heroes Memorial</b> ..... HEROES B3	<b>Physical Plant Building</b> ..... PPBLD F4 (Campus Police, Physical Plant Offices, Receiving, Scene Shop)	<b>Whalley Memorial Chapel</b> ..... CHAPL B3 (Campus Ministry)
<b>Cascade Manor</b> (residence hall)..... CASCD E2	<b>Hickory Hall</b> (residence hall) ..... HICKRY E3	<b>Pole Building</b> (Storage) ..... POLE G2	<b>Wilderness Manor</b> (residence hall) ..... WILDN F2
	<b>Highland Manor</b> (residence hall) ..... HIGHL E2	<b>Sports Center</b> (Athletics Offices) ..... SPORT G3	<b>Willow Hall</b> (residence hall) ..... WILLO D4
	<b>Krebs Hall</b> ..... KREBS B3 (Natural Sciences, Social Sciences)		<b>Woodland Manor</b> (residence hall) ..... WOOD E2
	<b>Larkspur Lodge</b> (residence hall) ..... LARKS D2		<b>Zamias Aquatic Center</b> ..... AQUA G3
	<b>Laurel Hall</b> (residence hall) ..... LAURL E3		
	<b>Living-Learning Center</b> ..... LLCNT B1 (Conference Services, residence hall)		

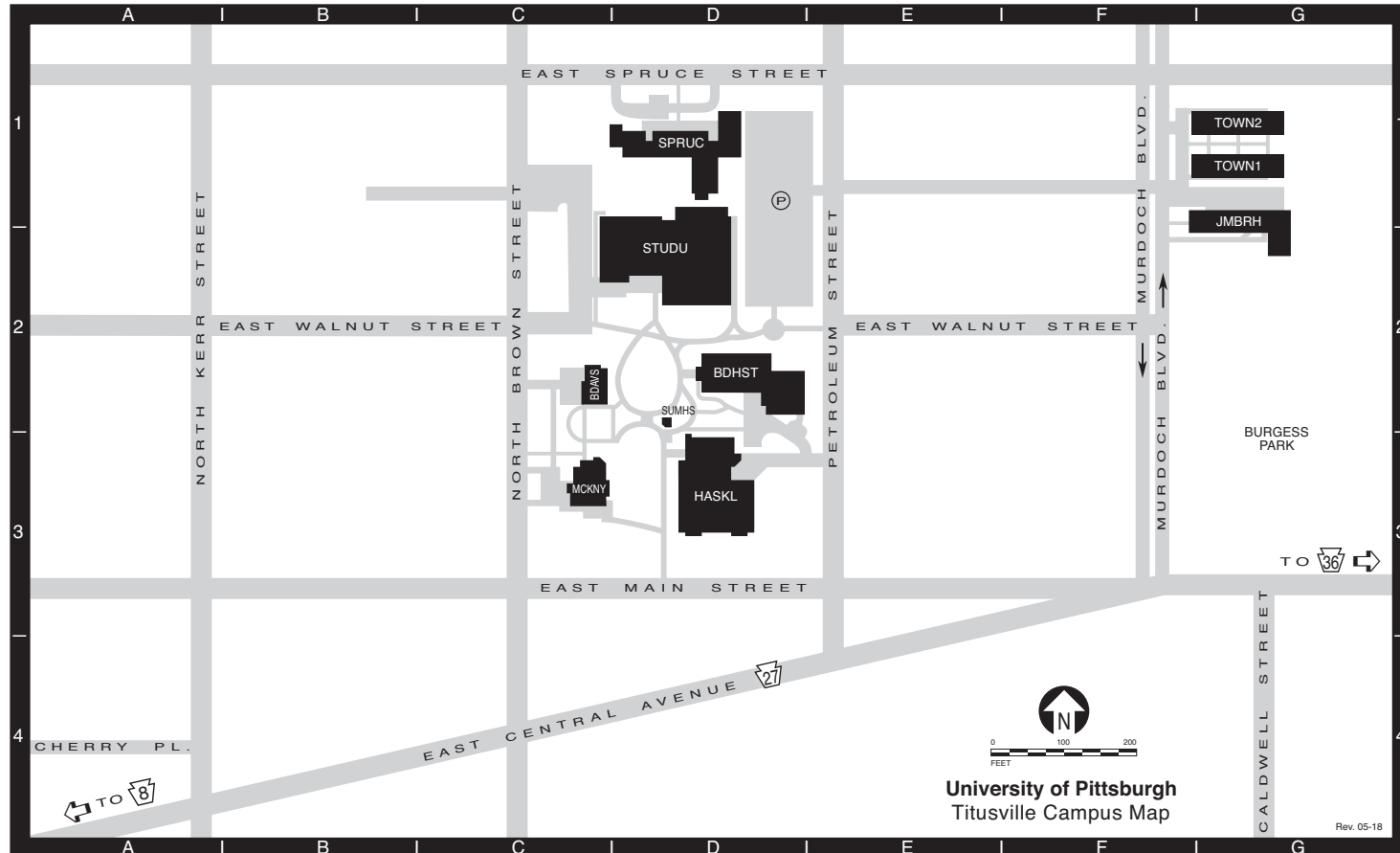
Ⓘ Parking ⒽⒽ Handicap Parking ♿ Handicap Accessible

**GREENSBURG CAMPUS MAP**


<b>Apollo House</b> (Residence Hall) ..... APH D3	Faculty Office Building ..... FOB C3	McKenna Hall ..... MCK C3	<b>Selene House</b> (Residence Hall)..... SEH E3
<b>Athena House</b> (Residence Hall)..... ATHH D4	Ferguson Theater ..... FT D2	Millstein Library (Academic Advising, ..... ML C2	Smith Hall (Classrooms, Faculty, ..... SH D2
<b>Benjamin Franklin House</b> ..... BFH E4	Frank A. Cassell Hall (Computing Services,.....FACH D3	Financial Aid, Learning Resource Center,	Labs, Offices)
(Residence Hall)	Faculty Offices)	Library, Registrar, Student Accounts)	<b>Thurgood Marshall House</b> ..... TMH E3
<b>Campana Chapel and Lecture Center</b> ..... CCLC E2	Kimbel Garage.....KMLG F3	Plant Maintenance Building.....PMB B3	(Residence Hall)
<b>Campus Police Building</b> ..... GCPB D2	Lyceum..... LYC D2	Plant Maintenance Garage ..... PMG B3	<b>University Court</b> (Residence Hall A).....UCA G1
(Mailroom, Police, Switchboard)	<b>Lynch Hall</b> (Conferencing, Institutional Adv., .....LH B3	Plant Maintenance Storage Building.....PMSB A3	(Residence Hall B) ..... UCB G1
<b>Chambers Hall</b> (Athletic Facilities, ..... CH C2	Office of the President, ROTC, University Relations,	Powers Hall (Auditorium).....PH C3	(Residence Hall C) ..... UCC G1
Bookstore, Dining Hall, Health Center,	Vice President for Academic Affairs,	Classrooms, Faculty Offices)	<b>Village Hall</b> (Coffee House).....VH E4
Housing, Information Desk, Student Services)	Vice President for Administrative Affairs)	Rial Garage ..... RIALG E4	<b>Westmoreland Hall</b> (Residence Hall) .....WH D2
<b>College Hall</b> (Residence Hall)..... COLLH C1	<b>Margaret Mead House</b> .....MMH E3	Rial House ..... RIALH E3	
<b>Emanuele Garage off map</b> .....EG A2	(Residence Hall)	Robertshaw Hall (Residence Hall)..... RH C1	
		Rossetti House (Admissions) .....RIH E3	

(P) Parking

TITUSVILLE CAMPUS MAP



**Joe M. Ball Residence Hall** ..... JMBRH G1  
(residence hall, dining hall)  
**Bennett Davis Hall** ..... BDAVS C2  
(Registrar, Student Accounts, Financial Aid,  
Human Resources, Purchasing, Business Affairs,  
Mail Services)  
**Broadhurst Science Center** ..... BDHST D2  
(Academic Affairs, science classrooms  
and labs, faculty offices, computer lab,  
Henne Auditorium)

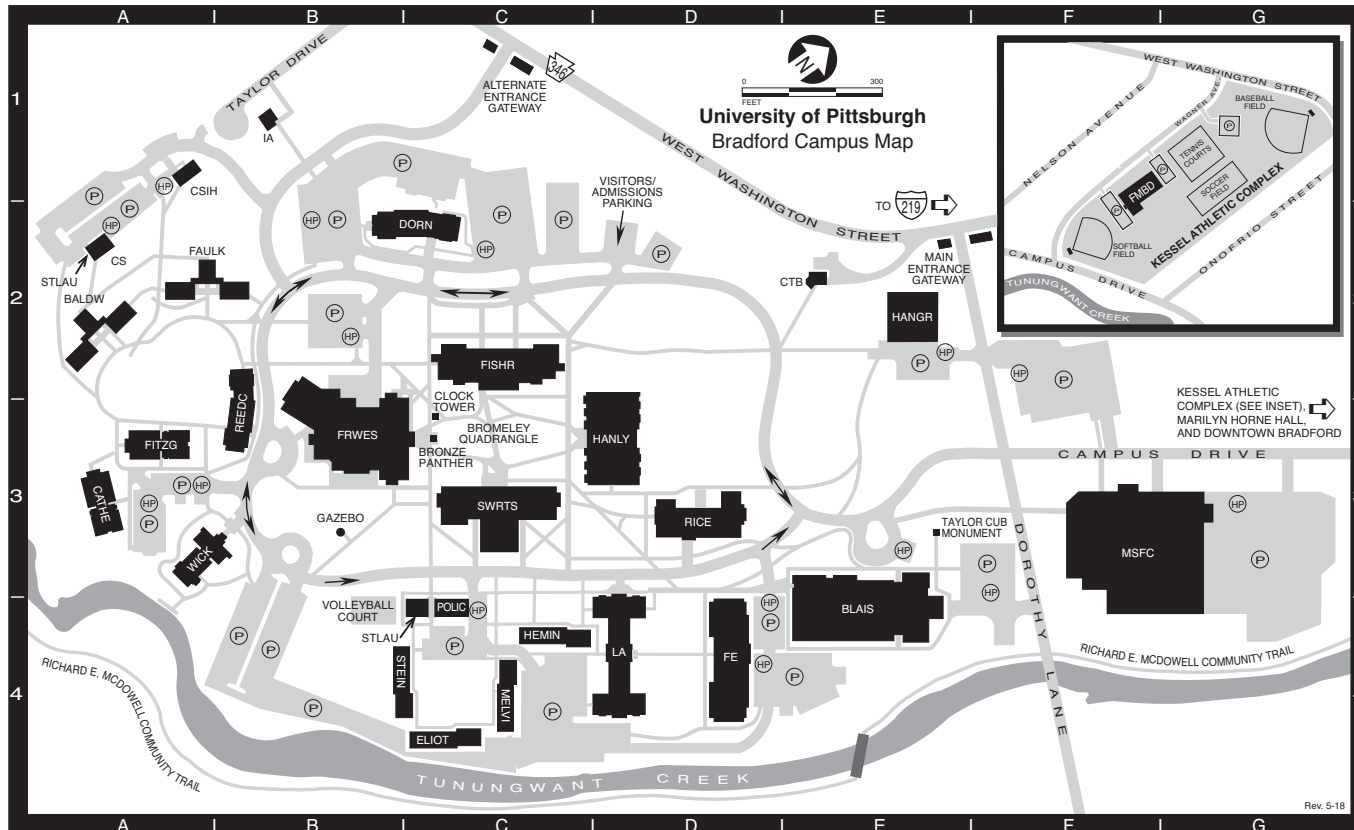
**Haskell Memorial Library** ..... HASKL D3  
(auditorium, Computer Center, Nursing  
Program faculty offices and labs, Physical  
Therapist Assistant Program, Learning Center)  
**McKinney Hall** ..... MCKNY C3  
(Admissions, classrooms, President's Office,  
Public Relations, Nursing Program Office,  
Alumni Relations)

**J. Curtis McKinney II Student Union  
and Gymnasium** ..... STUDU D2  
(Student Affairs, Book Center, Boomer's  
Snack Bar, Health Service)  
**Murdoch Townhouses** ..... TOWN1 G1  
TOWN2 G1  
(residence halls, Coffee House,  
Facilities Management)

**Spruce Hall** (residence hall, Campus Police) ... SPRUC D1  
**Summer House** ..... SUMHS D2

(P) Parking

BRADFORD CAMPUS MAP



**Admissions and Financial Aid Offices**

- Admissions located in Hanley Library ..... HANLY D3
- Financial Aid located in Hangar Building . HANGR E2
- Blaisdell Hall (Communication Arts, Fine Arts).... BLAIS E4
- Campus Police Building ..... POLIC C4
- Ceramic Studio ..... CS A2
- Control Tower Building ..... CTB E2
- (Human Resources, Payroll)
- Crime Scene Investigation (CSI) House..... CSH A1
- Richard E. and Ruth McDowell
- Sport and Fitness Center ..... MSFC F3
- Fisher Hall (Natural Sciences, Engineering,..... FISHR C2
- Computer Center, Rice Auditorium)

**Facilities Management Building (see inset) .. FMBD F1**

- Frame-Westerberg Commons ..... FRWES B3
- (Student Union, Book Store, Student Affairs, Dining Halls)
- Hangar Building (Business Affairs, ..... HANGR E2
- Financial Aid, Registration, Student Accounts)
- Hanley Library (Library, President's Office, ... HANLY D3
- Institutional Advancement, Admissions, Communications and Marketing)
- Harriett B. Wick Chapel ..... WICK A3
- International House ..... IA B1
- Kessel Athletic Complex (see inset) ..... F2

**Residence Halls**

- Ernest Hemingway House ..... HEMIN C4
- F. Scott Fitzgerald House ..... FITZG A3
- Gertrude Stein House ..... STEIN B4
- Herman Melville House ..... MELVI C4
- Howard L. Fesenmyer House ..... FE D4
- James Baldwin House ..... BALDW A2
- Lester and Barbara Rice House ..... RICE D3
- Livingston Alexander House ..... LA D4
- Reed-Coit House ..... REEDC B3
- Sarah B. Dorn House ..... DORN C2
- T. S. Eliot House ..... ELIOT C4
- Willa Cather House ..... CATHE A3

- William Faulkner House ..... FAULK A2
- Marilyn Horne Hall (*off map*)..... G3
- Student Laundry Building**..... STLAU A2, C4
- Swarts Hall (Humanities, ..... SWRTS C3**
- Social Sciences, Nursing)

(P) Parking (HP) Handicap Parking



UNIVERSITY ORGANIZATION

**UNIVERSITY OF PITTSBURGH**  
**Membership of the Board of Trustees**  
**2019-2020**

Eva Tansky Blum, Chairperson  
Thomas E. Richards, Chairperson-Elect  
Patrick Gallagher, Chancellor and Chief Executive Officer, Member Ex Officio

**Term Trustees**

<b>2016-2020</b>	<b>2017-2021</b>	<b>2018-2022</b>	<b>2019-2023</b>
John A. Barbour Eva Tansky Blum Edward J. Grefenstette Patricia D. Horoho John H. Pelusi Jr.	Ira J. Gumberg Dawne S. Hickton Roberta A. Luxbacher Thomas E. Richards	Mary Ellen Callahan Vaughn S. Clagette James P. Covert Keith E. Schaefer	Douglas M. Browning David C. Chavern Louis R. Cestello Deborah J. Gillotti

**Special Trustees**

<b>2016-2020</b>	<b>2017-2021</b>	<b>2018-2022</b>	<b>2019-2023</b>
Robert M. Hernandez Marlee S. Myers Shawndya L. Simpson Vacant	SaLisa L. Berrien Tamara M. Haddad Herbert S. Shear Adam C. Walker	Sundaa Bridgett-Jones Wen-Ta Chiu David J. Morehouse Marna Cupp Whittington	Robert O. Agbede G. Nicholas Beckwith III Emil Spadafore A. David Tilstone

**Alumni Trustees**

<b>2016-2020</b>	<b>2017-2021</b>	<b>2018-2022</b>	<b>2019-2023</b>
S. Jeffrey Kondis Jack D. Smith	Larry J. Merlo	Jane Bilewicz Allred Gary T. Brownlee	Michael G. Wells

**Commonwealth Trustees**

(G - Governor appointment; H - House appointment; S - Senate appointment)

<b>2015-2019</b>	<b>2016-2020</b>	<b>2017-2021</b>	<b>2018-2022</b>
Diane P. Holder (H) Peter C. Varischetti (S) Jake Wheatley Jr. (G)	Jay Costa Jr. (S) Bradley J. Franc (G) Thomas O. Johnson II (H)	Sy Holzer (G) William K. Lieberman (S) Thomas VanKirk (H)	John A. Maher III (H) John J. Verbanac (S)

**Ex Officio Trustees**

Tom W. Wolf, Governor of the Commonwealth of Pennsylvania  
Pedro A. Rivera, Secretary of Education of the Commonwealth of Pennsylvania  
Rich Fitzgerald, Allegheny County Executive  
William Peduto, Mayor of the City of Pittsburgh

**Emeritus Trustees**

J. David Barnes Steven C. Beering Thomas G. Bigley Suzanne W. Broadhurst John G. Conomikes George A. Davidson Jr. Catherine D. DeAngelis	Herbert P. Douglas Jr. D. Michael Fisher E. Jeanne Gleason J. Roger Glunt Earl F. Hord Paul E. Lego George L. Miles Jr.	Frank E. Mosier Alfred L. Moyé Thomas H. O'Brien Anthony J. F. O'Reilly Robert A. Paul James C. Roddey Farrell Rubenstein	Richard P. Simmons Charles M. Steiner John A. Swanson Burton M. Tansky Dick Thornburgh Thomas J. Usher
--	---	---	---

Source: Office of the Secretary, October 2019.



**Officers of the University of Pittsburgh  
2019-2020**

Eva Tansky Blum.....	Chairperson of the Board of Trustees
Patrick Gallagher .....	Chancellor and Chief Executive Officer
Ann E. Cudd .....	Senior Vice Chancellor and Provost
Arthur S. Levine .....	Senior Vice Chancellor for Health Sciences and Dean of the School of Medicine
Rob A. Rutenbar .....	Senior Vice Chancellor for Research
Geovette E. Washington.....	Senior Vice Chancellor and Chief Legal Officer
Narahari Sastry.....	Senior Vice Chancellor and Chief Financial Officer
Kathy W. Humphrey .....	Senior Vice Chancellor for Engagement and Secretary of the Board of Trustees
Gregory A. Scott .....	Senior Vice Chancellor for Business and Operations
Appointment Pending .....	Deputy Secretary of the Board of Trustees
Greg Schuler.....	Chief Investment Officer
Paul Lawrence .....	Treasurer
Susan M. Gilbert .....	Assistant Treasurer

Source: Office of the Secretary, October 2019.

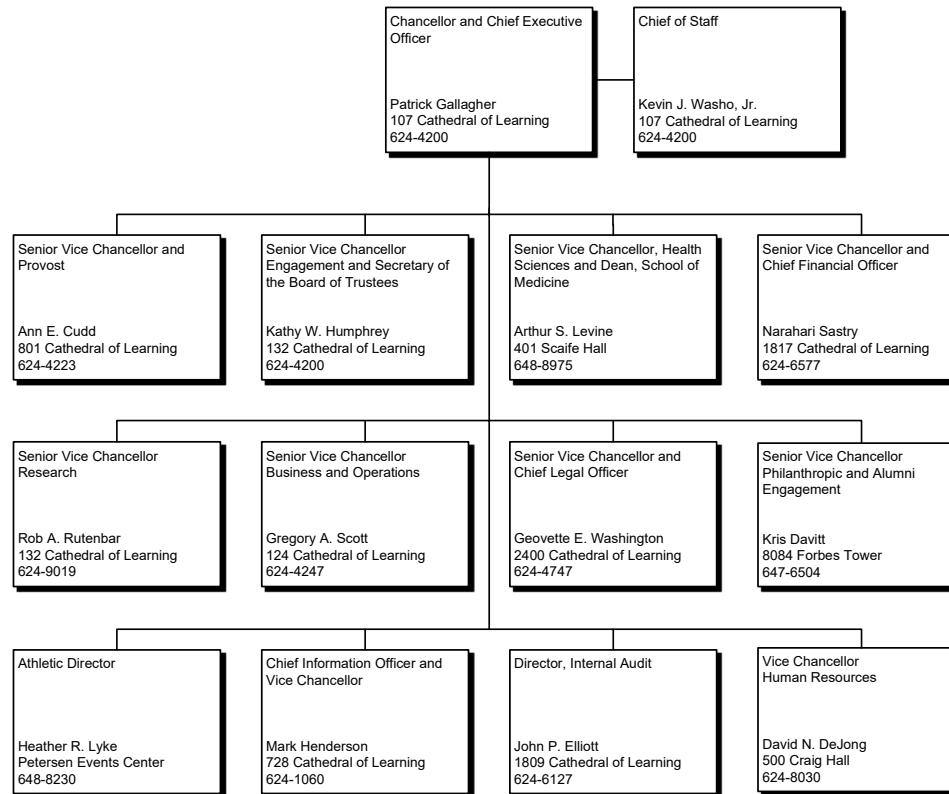
UNIVERSITY OFFICERS



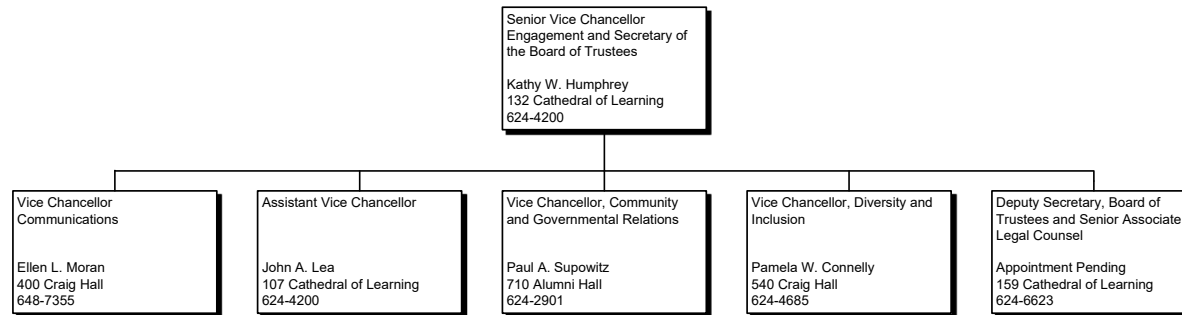
<sup>1</sup>Also serving as a University officer is Susan M. Gilbert, Assistant Treasurer.

Note: All telephone numbers are in the 412 area code unless indicated otherwise.

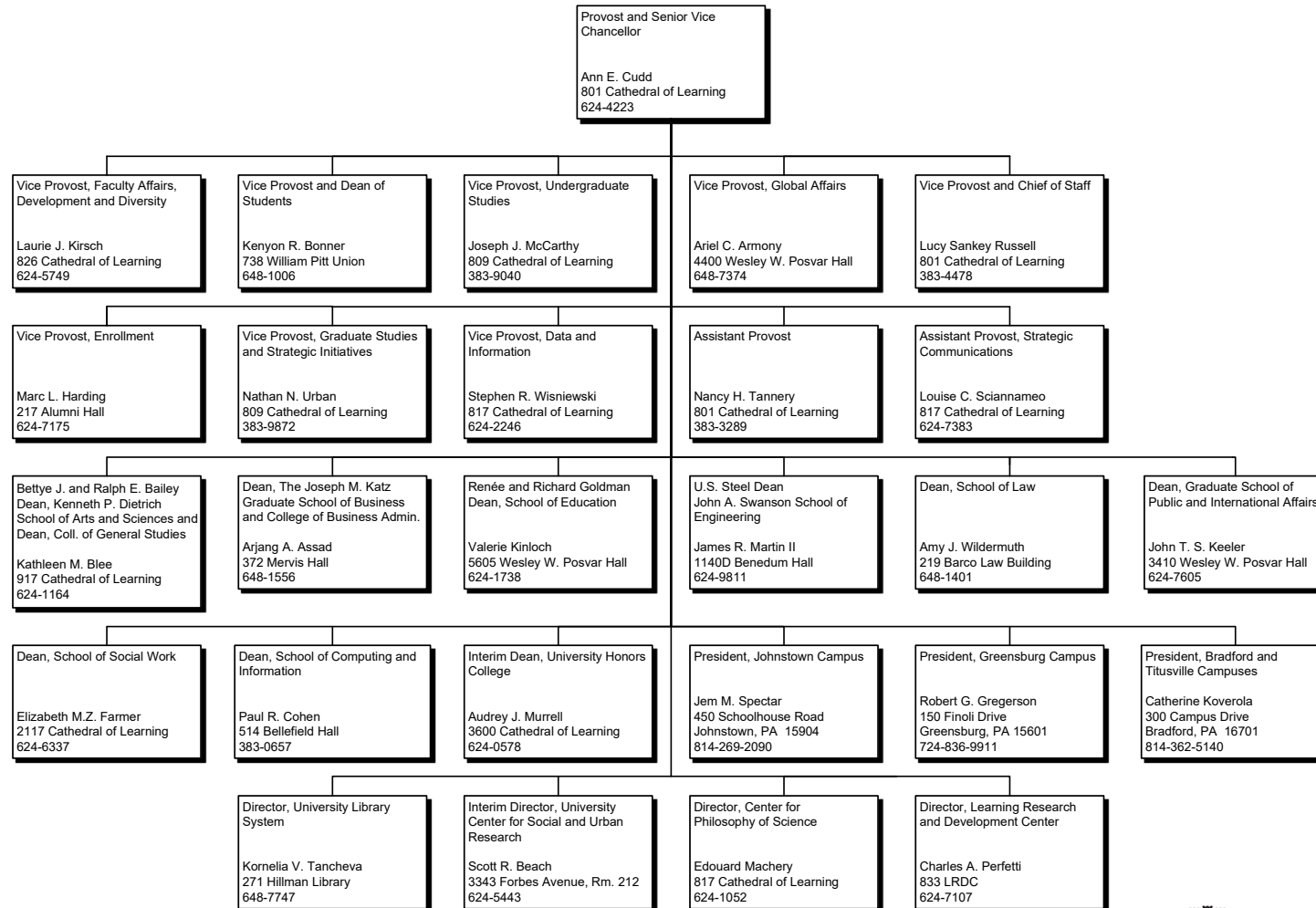
### CHANCELLOR AND CHIEF EXECUTIVE OFFICER



Note: All telephone numbers are in the 412 area code unless indicated otherwise.

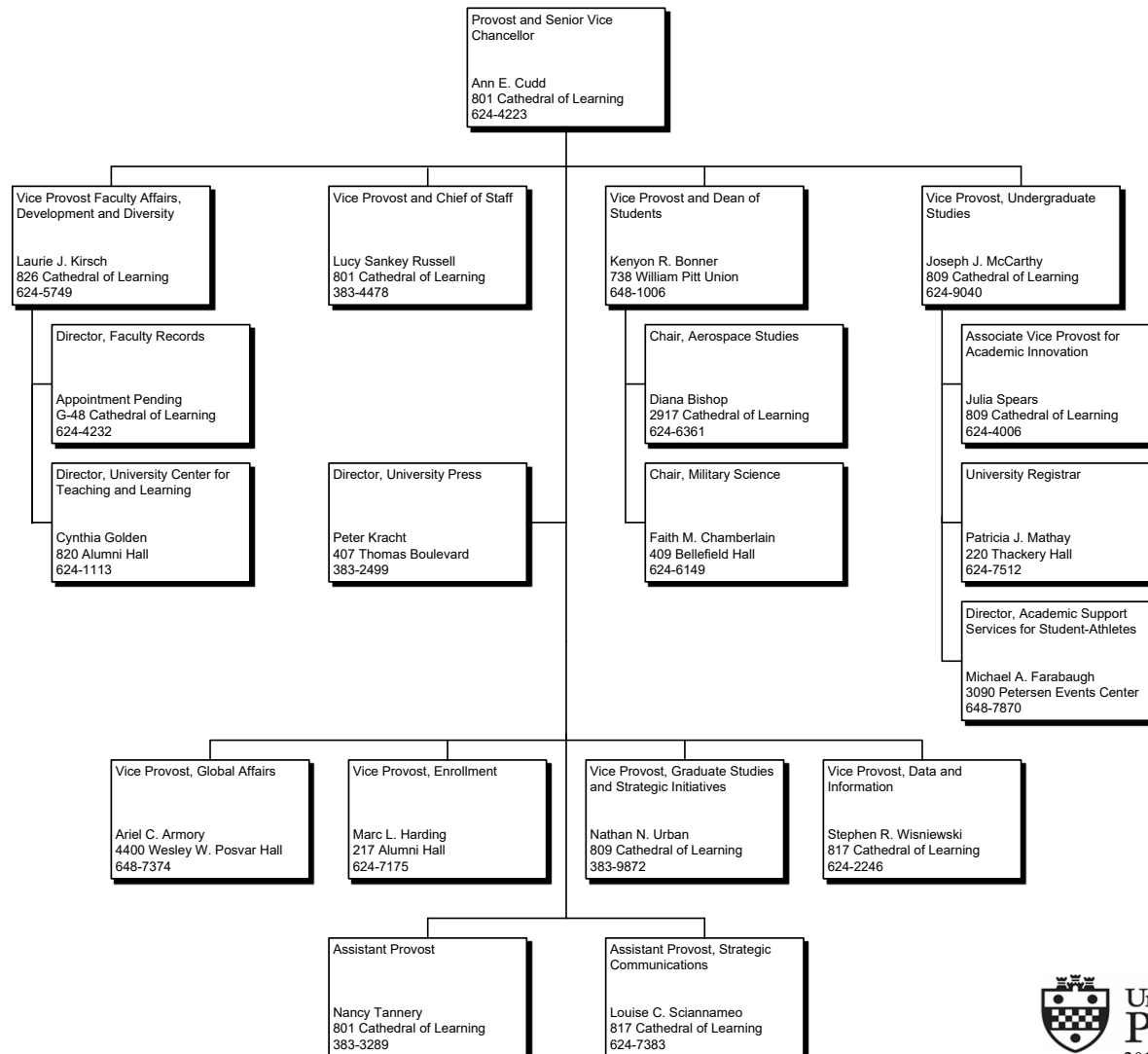
**SENIOR VICE CHANCELLOR FOR ENGAGEMENT**

Note: All telephone numbers are in the 412 area code unless indicated otherwise.

**PROVOST AND SENIOR VICE CHANCELLOR – DEANS / DIRECTORS / PRESIDENTS**


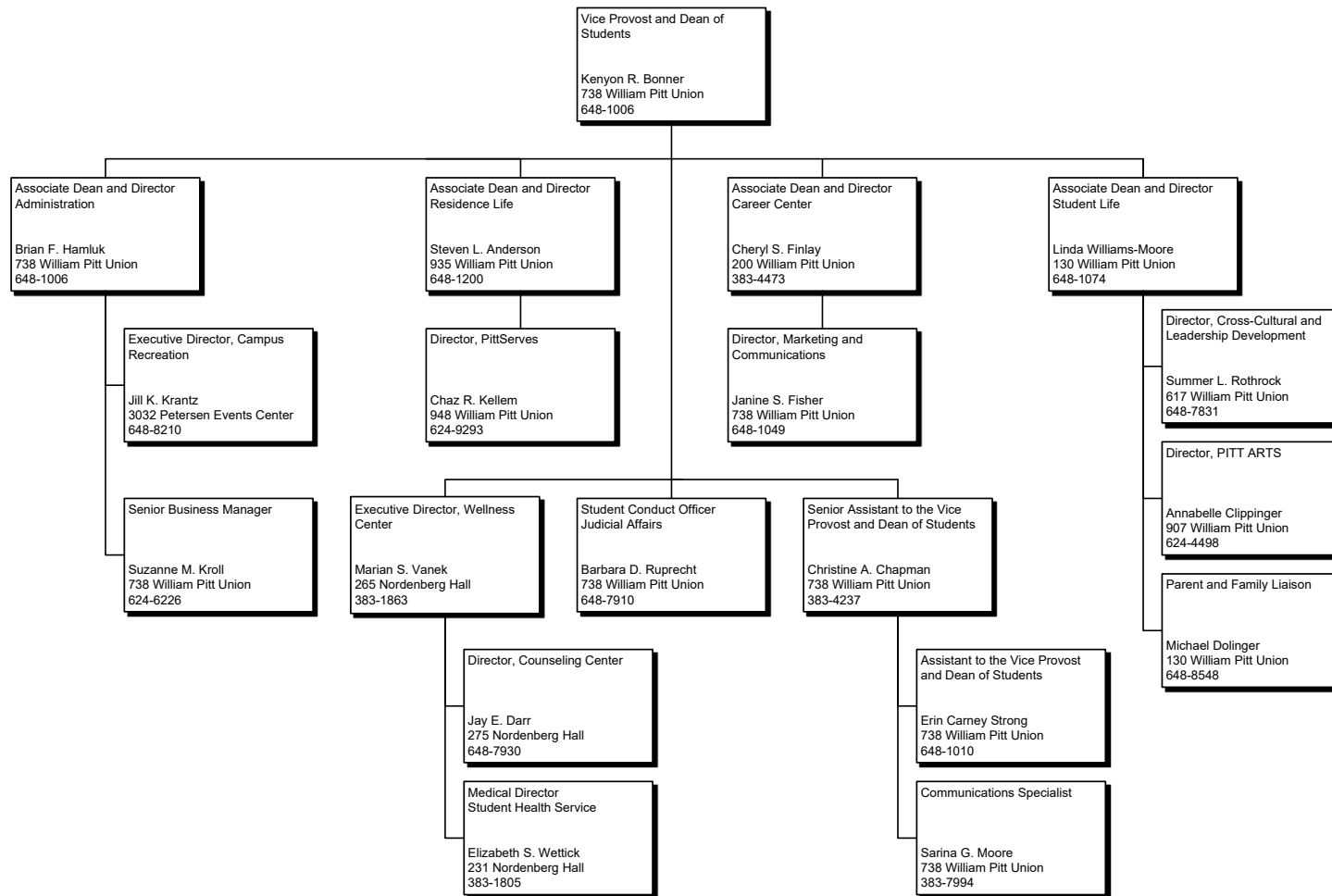
Note: All telephone numbers are in the 412 area code unless indicated otherwise.

**PROVOST AND SENIOR VICE CHANCELLOR – OTHER ACADEMIC AREAS**



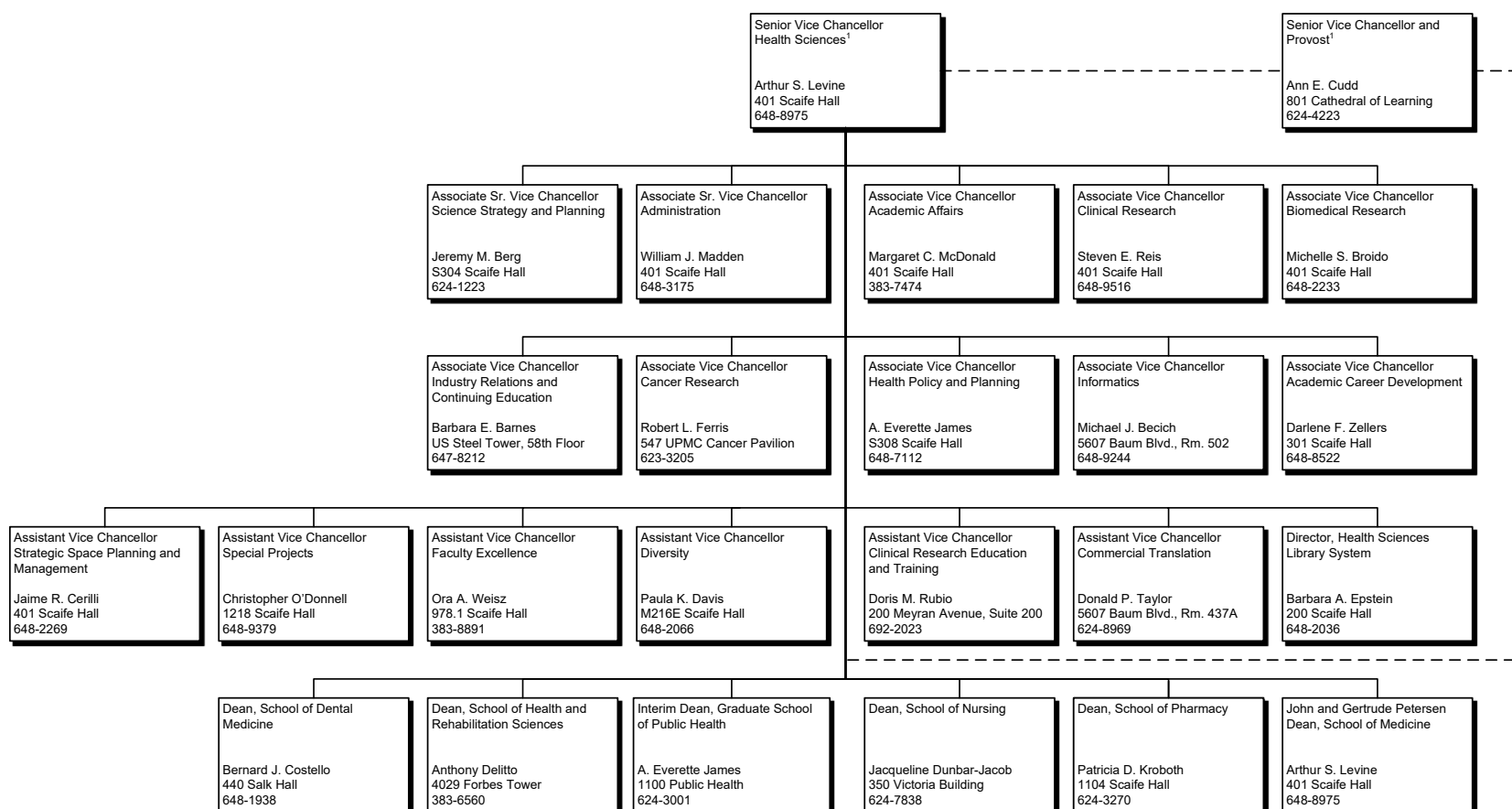
Note: All telephone numbers are in the 412 area code unless indicated otherwise.

**VICE PROVOST AND DEAN OF STUDENTS**



Note: All telephone numbers are in the 412 area code unless indicated otherwise.

**SENIOR VICE CHANCELLOR FOR HEALTH SCIENCES – DEANS AND VICE CHANCELLORS**

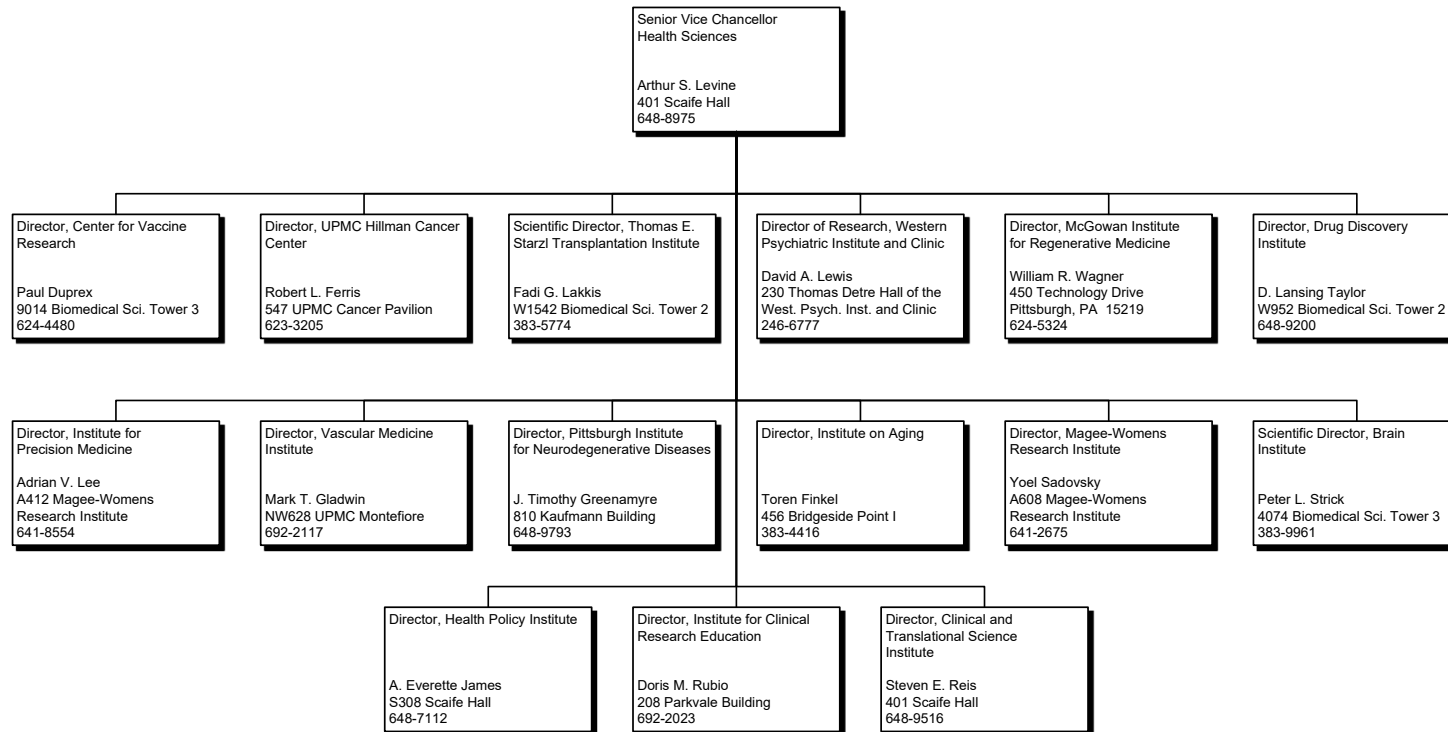


<sup>1</sup>Faculty appointments and academic degree programs require the Provost's approval.

Note: All telephone numbers are in the 412 area code unless indicated otherwise.

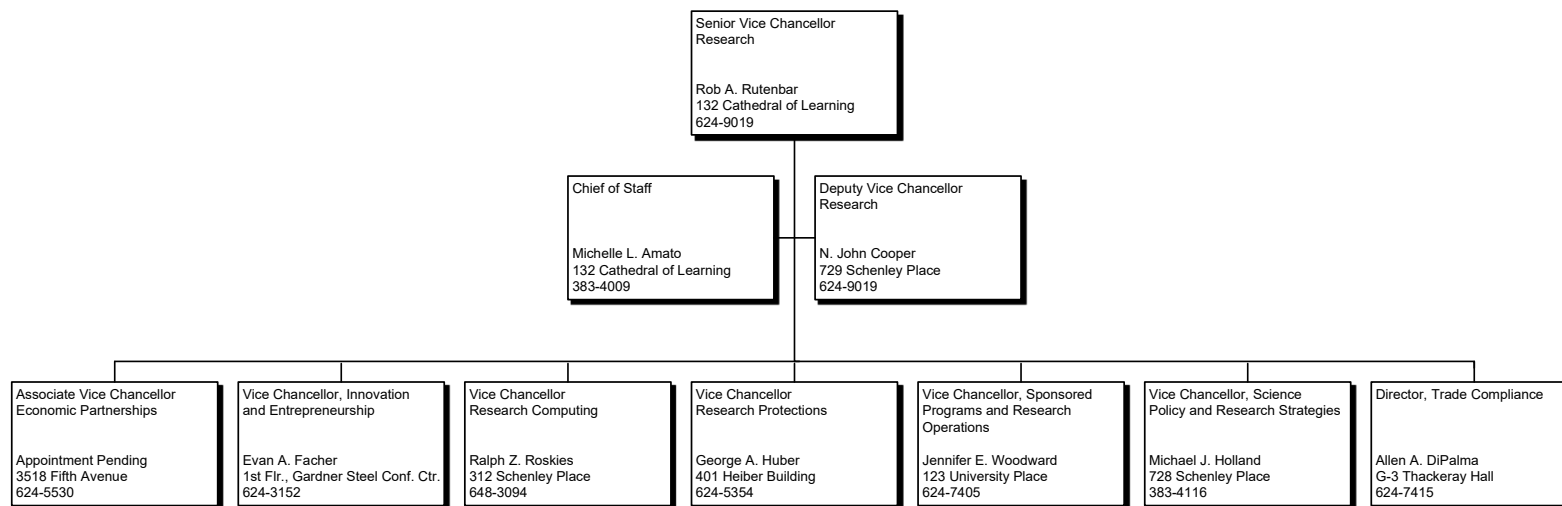


**SENIOR VICE CHANCELLOR FOR HEALTH SCIENCES – INSTITUTE DIRECTORS**



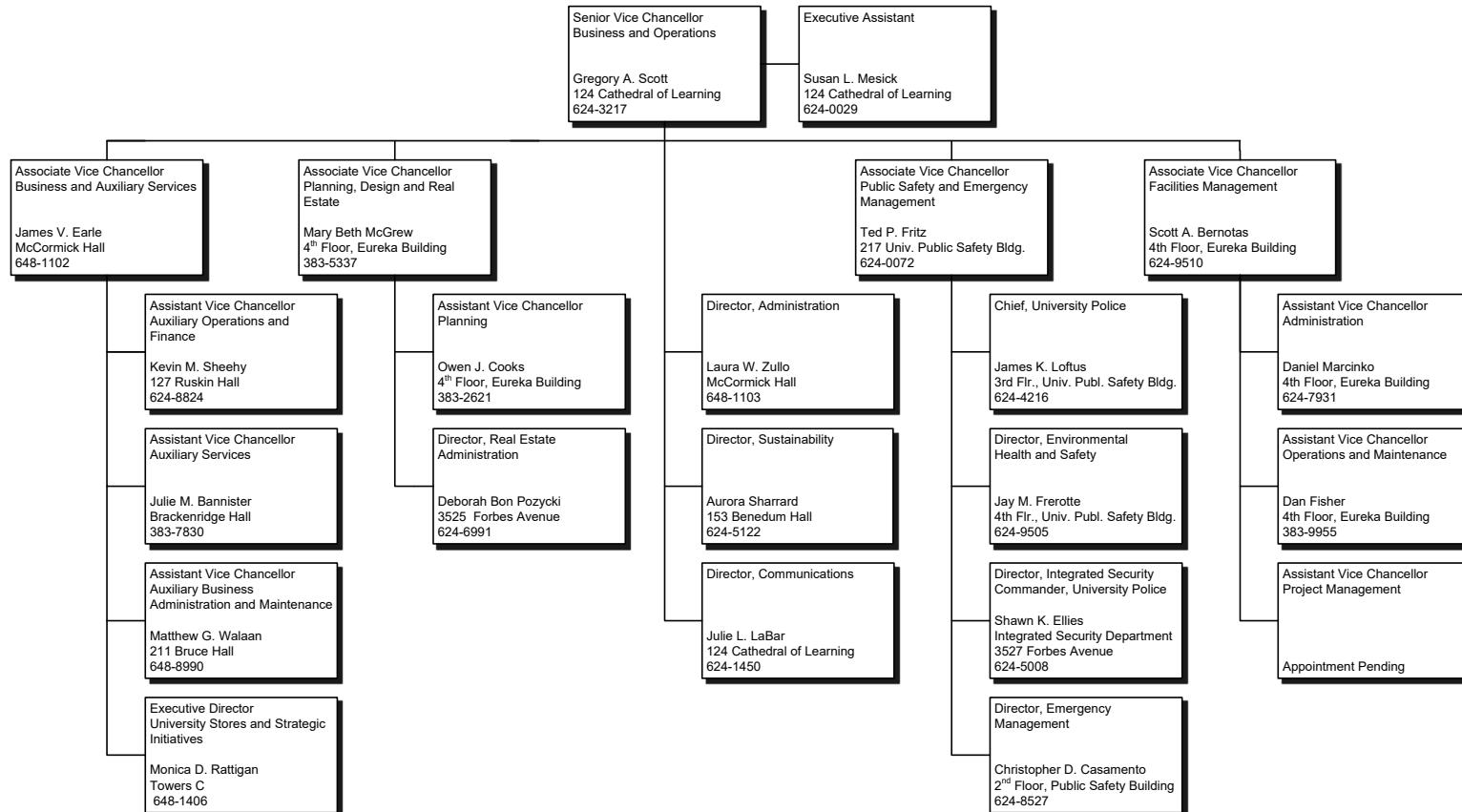
Note: All telephone numbers are in the 412 area code unless indicated otherwise.

### SENIOR VICE CHANCELLOR FOR RESEARCH

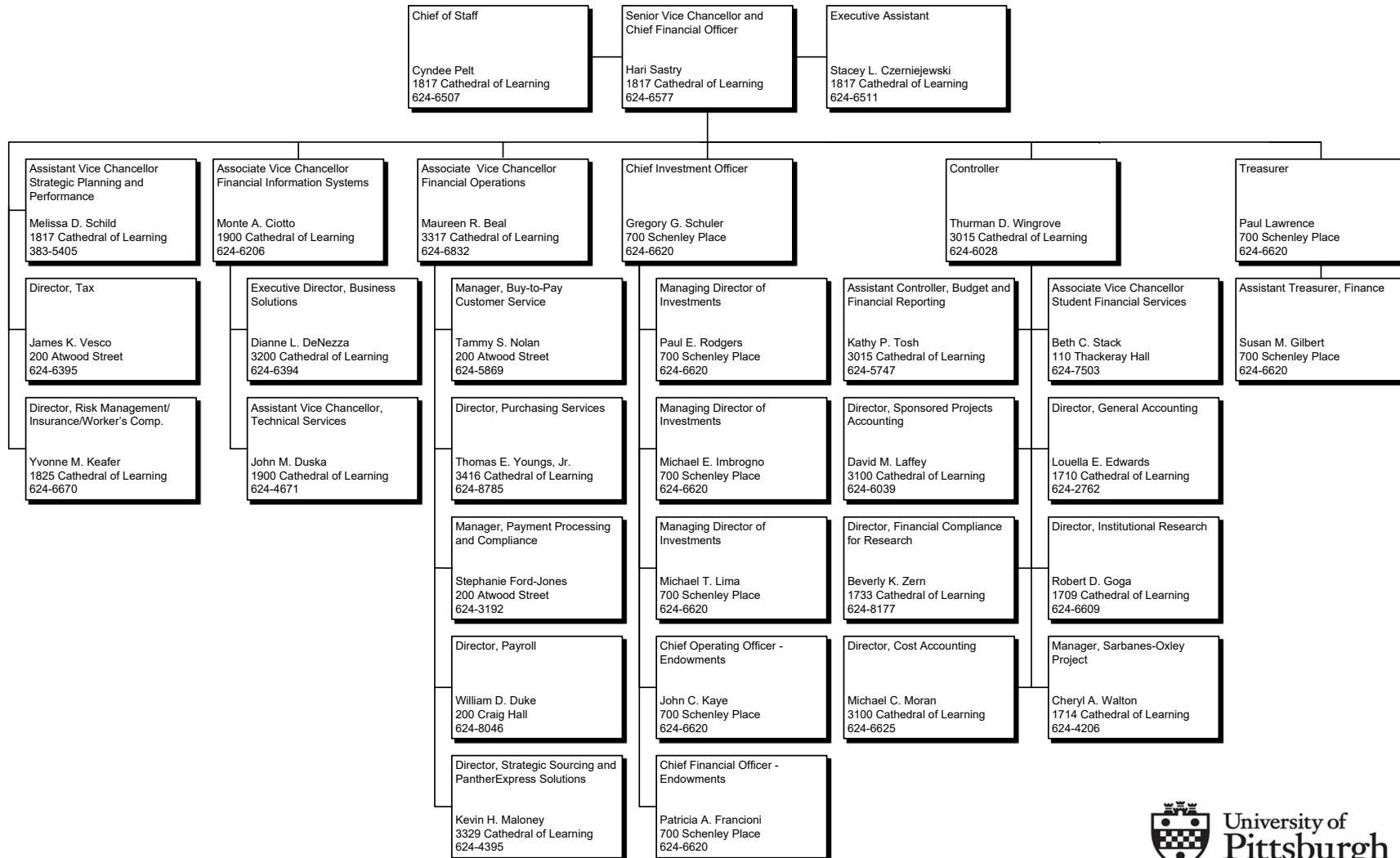


Note: All telephone numbers are in the 412 area code unless indicated otherwise.

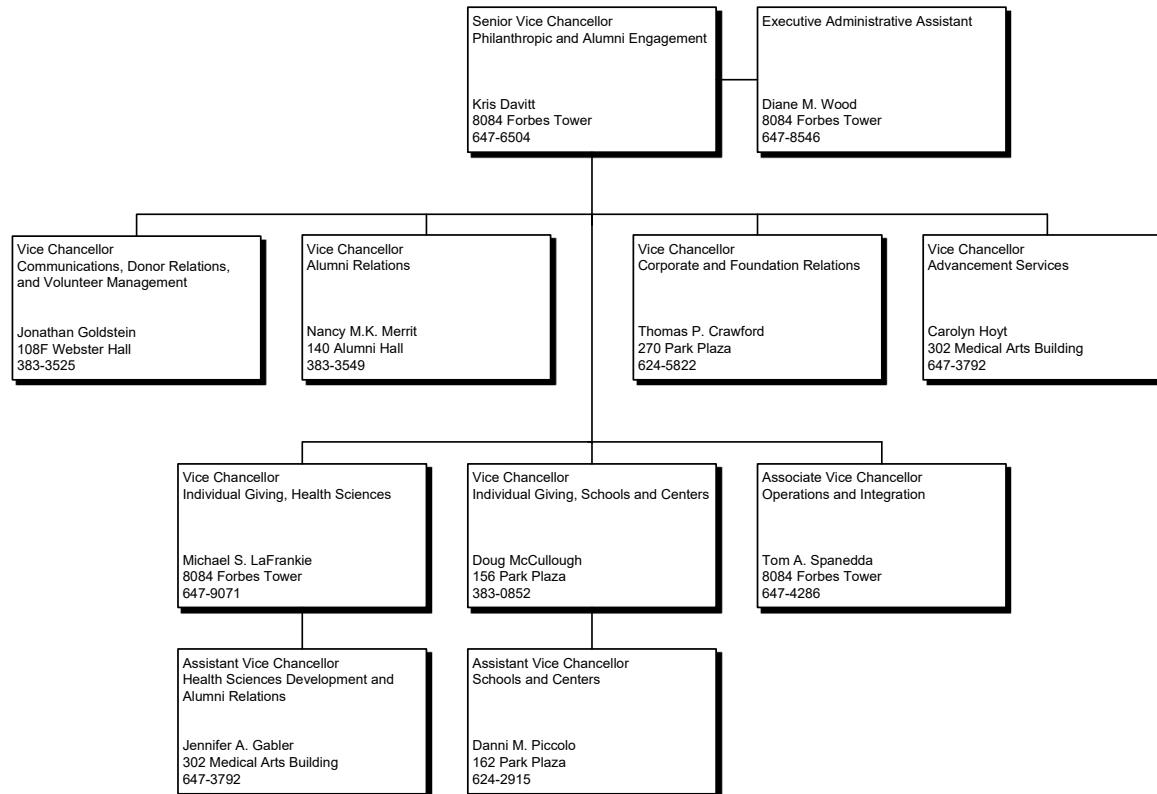
**SENIOR VICE CHANCELLOR FOR BUSINESS AND OPERATIONS**



Note: All telephone numbers are in the 412 area code unless indicated otherwise.

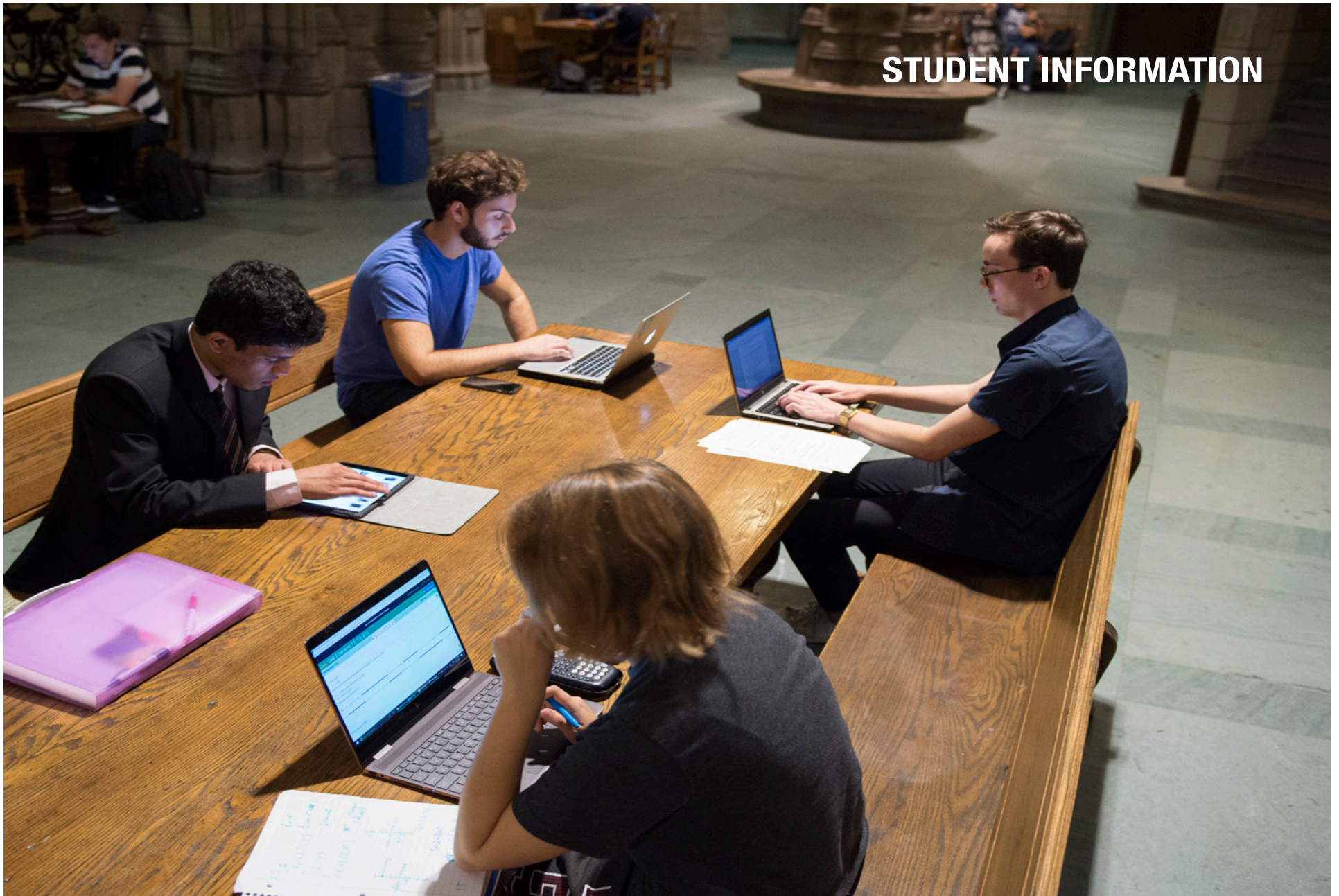
**SENIOR VICE CHANCELLOR AND CHIEF FINANCIAL OFFICER**


### SENIOR VICE CHANCELLOR FOR PHILANTHROPIC AND ALUMNI ENGAGEMENT



Note: All telephone numbers are in the 412 area code unless indicated otherwise.

## STUDENT INFORMATION



**HEADCOUNT ENROLLMENT BY CAMPUS, SCHOOL, LEVEL, AND STATUS — FALL TERM 2019**

		Undergraduate			Graduate			Doctorate - Professional Practice			Total - All Levels		
		Full-Time	Part-Time	Total	Full-Time	Part-Time	Total	Full-Time	Part-Time	Total	Full-Time	Part-Time	Total
Pittsburgh Campus	Dietrich School of Arts and Sciences	10,706	380	11,086	1,254	56	1,310				11,960	436	12,396
	College of General Studies	597	298	895							597	298	895
	Katz Graduate School of Business				423	303	726				423	303	726
	School of Education	190	7	197	371	187	558	20	179	199	581	373	954
	Swanson School of Engineering	2,792	50	2,842	701	169	870				3,493	219	3,712
	School of Law				22	77	99	393	3	396	415	80	495
	Graduate School of Public and International Affairs				245	133	378				245	133	378
	School of Social Work	71	10	81	362	126	488				433	136	569
	School of Computing and Information	540	37	577	466	102	568				1,006	139	1,145
	College of Business Administration	1,970	42	2,012							1,970	42	2,012
	School of Dental Medicine	57	4	61	54		54	325		325	436	4	440
	School of Nursing	732	17	749	36	62	98	117	132	249	885	211	1,096
	School of Pharmacy	185	1	186	73	3	76	268		268	526	4	530
	Graduate School of Public Health				377	165	542				377	165	542
	School of Medicine				364	145	509	610		610	974	145	1,119
School of Health and Rehabilitation Sciences	503	11	514	441	34	475	358	17	375	1,302	62	1,364	
University Center for Social and Urban Research					18	18					18	18	
	<b>Total</b>	<b>18,343</b>	<b>857</b>	<b>19,200</b>	<b>5,189</b>	<b>1,580</b>	<b>6,769</b>	<b>2,091</b>	<b>331</b>	<b>2,422</b>	<b>25,623</b>	<b>2,768</b>	<b>28,391</b>
Regional Campuses	Johnstown	2,403	59	2,462							2,403	59	2,462
	Greensburg	1,359	80	1,439							1,359	80	1,439
	Titusville	111	24	135							111	24	135
	Bradford	1,250	67	1,317							1,250	67	1,317
	<b>Total</b>	<b>5,123</b>	<b>230</b>	<b>5,353</b>							<b>5,123</b>	<b>230</b>	<b>5,353</b>
<b>University Total</b>	<b>23,466</b>	<b>1,087</b>	<b>24,553</b>	<b>5,189</b>	<b>1,580</b>	<b>6,769</b>	<b>2,091</b>	<b>331</b>	<b>2,422</b>	<b>30,746</b>	<b>2,998</b>	<b>33,744</b>	

## FULL-TIME EQUIVALENT ENROLLMENT BY CAMPUS, SCHOOL, AND LEVEL — FALL TERM 2019

		Undergraduate	Graduate	Doctorate - Professional Practice	Total - All Levels
Pittsburgh Campus	Dietrich School of Arts and Sciences	10,858.0	1,276.4		12,134.4
	College of General Studies	716.2			716.2
	Katz Graduate School of Business		544.2		544.2
	School of Education	192.8	445.8	91.6	730.2
	Swanson School of Engineering	2,812.0	768.6		3,580.6
	School of Law		52.8	394.2	447.0
	Graduate School of Public and International Affairs		298.2		298.2
	School of Social Work	75.0	412.4		487.4
	School of Computing and Information	554.8	506.8		1,061.6
	College of Business Administration	1,986.8			1,986.8
	School of Dental Medicine	58.6	54.0	325.0	437.6
	School of Nursing	738.8	60.8	169.8	969.4
	School of Pharmacy	185.4	74.2	268.0	527.6
	Graduate School of Public Health		443.0		443.0
	School of Medicine		422.0	610.0	1,032.0
	School of Health and Rehabilitation Sciences	507.4	454.6	364.8	1,326.8
University Center for Social and Urban Research		7.2		7.2	
	<b>Total</b>	<b>18,685.8</b>	<b>5,821.0</b>	<b>2,223.4</b>	<b>26,730.2</b>
Regional Campuses	Johnstown	2,426.6			2,426.6
	Greensburg	1,391.0			1,391.0
	Titusville	120.6			120.6
	Bradford	1,276.8			1,276.8
	<b>Total</b>	<b>5,215.0</b>			<b>5,215.0</b>
<b>University Total</b>		<b>23,900.8</b>	<b>5,821.0</b>	<b>2,223.4</b>	<b>31,945.2</b>



**HEADCOUNT ENROLLMENT BY CAMPUS, SCHOOL, LEVEL, AND SEX — FALL TERM 2019**

		Undergraduate			Graduate			Doctorate - Professional Practice			Total - All Levels		
		M	F	Total	M	F	Total	M	F	Total	M	F	Total
Pittsburgh Campus	Dietrich School of Arts and Sciences	4,700	6,386	11,086	676	634	1,310				5,376	7,020	12,396
	College of General Studies	375	520	895							375	520	895
	Katz Graduate School of Business				404	322	726				404	322	726
	School of Education	54	143	197	129	429	558	69	130	199	252	702	954
	Swanson School of Engineering	1,899	943	2,842	630	240	870				2,529	1,183	3,712
	School of Law				28	71	99	209	187	396	237	258	495
	Graduate School of Public and International Affairs				149	229	378				149	229	378
	School of Social Work	15	66	81	72	416	488				87	482	569
	School of Computing and Information	460	117	577	345	223	568				805	340	1,145
	College of Business Administration	1,184	828	2,012							1,184	828	2,012
	School of Dental Medicine	2	59	61	24	30	54	154	171	325	180	260	440
	School of Nursing	86	663	749	12	86	98	61	188	249	159	937	1,096
	School of Pharmacy	60	126	186	34	42	76	101	167	268	195	335	530
	Graduate School of Public Health				145	397	542				145	397	542
	School of Medicine				212	297	509	273	337	610	485	634	1,119
	School of Health and Rehabilitation Sciences	98	416	514	120	355	475	77	298	375	295	1,069	1,364
University Center for Social and Urban Research				5	13	18				5	13	18	
	<b>Total</b>	<b>8,933</b>	<b>10,267</b>	<b>19,200</b>	<b>2,985</b>	<b>3,784</b>	<b>6,769</b>	<b>944</b>	<b>1,478</b>	<b>2,422</b>	<b>12,862</b>	<b>15,529</b>	<b>28,391</b>
Regional Campuses	Johnstown	1,379	1,083	2,462							1,379	1,083	2,462
	Greensburg	639	800	1,439							639	800	1,439
	Titusville	33	102	135							33	102	135
	Bradford	568	749	1,317							568	749	1,317
	<b>Total</b>	<b>2,619</b>	<b>2,734</b>	<b>5,353</b>							<b>2,619</b>	<b>2,734</b>	<b>5,353</b>
<b>University Total</b>		<b>11,552</b>	<b>13,001</b>	<b>24,553</b>	<b>2,985</b>	<b>3,784</b>	<b>6,769</b>	<b>944</b>	<b>1,478</b>	<b>2,422</b>	<b>15,481</b>	<b>18,263</b>	<b>33,744</b>

Note: The enrollment data presented are in accordance with U.S. Department of Education guidelines which do not enable reporting of students whose sex is either unknown, not reported, or is another, which in Fall Term 2019, is 0.3% of students enrolled.

**HEADCOUNT ENROLLMENT BY LEVEL, CAMPUS, SCHOOL, AND ETHNICITY — FALL TERM 2019**

			International	Black or African American	American Indian or Alaskan Native	Asian	Native Hawaiian/Other Pacific Islander	Hispanic or Latino	White	Two or More Races	Race Unknown	Total	
Undergraduate	Pittsburgh Campus	Dietrich School of Arts and Sciences	532	637	5	1,477	2	617	7,180	517	119	11,086	
		College of General Studies	14	101		54		40	626	47	13	895	
		School of Education	2	14	2	17		5	148	8	1	197	
		Swanson School of Engineering	186	110	2	229		111	2,057	119	28	2,842	
		School of Social Work		18		2		4	49	7	1	81	
		School of Computing and Information	45	21		85		19	378	23	6	577	
		College of Business Administration	117	62	1	139	1	94	1,508	72	18	2,012	
		School of Dental Medicine				5		3	50	3		61	
		School of Nursing	15	29		60		28	580	32	5	749	
		School of Pharmacy	3	4		48		2	117	8	4	186	
		School of Health and Rehabilitation Sciences	10	13		32		25	409	24	1	514	
		<b>Total</b>	<b>924</b>	<b>1,009</b>	<b>10</b>	<b>2,148</b>	<b>3</b>	<b>948</b>	<b>13,102</b>	<b>860</b>	<b>196</b>	<b>19,200</b>	
		Regional Campuses	Johnstown	37	103	1	65		131	1,992	64	69	2,462
			Greensburg	6	85		51		94	1,112	54	37	1,439
			Titusville		14	1			2	117	1		135
Bradford	20		185	5	40		87	885	52	43	1,317		
<b>Total</b>	<b>63</b>		<b>387</b>	<b>7</b>	<b>156</b>		<b>314</b>	<b>4,106</b>	<b>171</b>	<b>149</b>	<b>5,353</b>		
<b>Total</b>	<b>987</b>	<b>1,396</b>	<b>17</b>	<b>2,304</b>	<b>3</b>	<b>1,262</b>	<b>17,208</b>	<b>1,031</b>	<b>345</b>	<b>24,553</b>			
Graduate	Pittsburgh Campus	Dietrich School of Arts and Sciences	492	45	1	39		83	594	36	20	1,310	
		Katz Graduate School of Business	277	20		35		23	336	9	26	726	
		School of Education	79	28		14	1	22	393	13	8	558	
		Swanson School of Engineering	435	14	1	33	1	31	309	24	22	870	
		School of Law	19	10		1		2	31		36	99	
		Graduate School of Public and International Affairs	69	8		3		12	126		160	378	
		School of Social Work	15	68	1	13		28	342	17	4	488	
		School of Computing and Information	419	6		16		1	111	10	5	568	
		School of Dental Medicine	16	1		6		1	14		16	54	
		School of Nursing	12	2		7		2	74		1	98	
		School of Pharmacy	52	1		4			7		12	76	
		Graduate School of Public Health	105	26		40	1	29	301	22	18	542	
		School of Medicine	96	26	2	46		20	271	8	40	509	
		School of Health and Rehabilitation Sciences	52	12		20		15	348	16	12	475	
		University Center for Social and Urban Research		1		1			7		9	18	
<b>Total</b>	<b>2,138</b>	<b>268</b>	<b>5</b>	<b>278</b>	<b>3</b>	<b>269</b>	<b>3,264</b>	<b>155</b>	<b>389</b>	<b>6,769</b>			
<b>Total</b>	<b>2,138</b>	<b>268</b>	<b>5</b>	<b>278</b>	<b>3</b>	<b>269</b>	<b>3,264</b>	<b>155</b>	<b>389</b>	<b>6,769</b>			
Doctorate - Professional Practice	Pittsburgh Campus	School of Education	1	41		5		10	135	4	3	199	
		School of Law	7	16		21		23	283	9	37	396	
		School of Dental Medicine	32	6		52	1	14	194	14	12	325	
		School of Nursing	1	9		13		12	203	5	6	249	
		School of Pharmacy	7	8		37		5	166	7	38	268	
		School of Medicine	8	62		133		35	334	22	16	610	
		School of Health and Rehabilitation Sciences	5	6	1	19		10	309	10	15	375	
<b>Total</b>	<b>61</b>	<b>148</b>	<b>1</b>	<b>280</b>	<b>1</b>	<b>109</b>	<b>1,624</b>	<b>71</b>	<b>127</b>	<b>2,422</b>			
<b>Total</b>	<b>61</b>	<b>148</b>	<b>1</b>	<b>280</b>	<b>1</b>	<b>109</b>	<b>1,624</b>	<b>71</b>	<b>127</b>	<b>2,422</b>			
<b>Total - All Levels and All Campuses</b>	<b>3,186</b>	<b>1,812</b>	<b>23</b>	<b>2,862</b>	<b>7</b>	<b>1,640</b>	<b>22,096</b>	<b>1,257</b>	<b>861</b>	<b>33,744</b>			

## HEADCOUNT ENROLLMENT BY CAMPUS, STATUS, LEVEL, AND RESIDENCY — FALL TERM 2019

		Undergraduate			Graduate			Doctorate - Professional Practice			Total - All Levels		
		In- State	Out-of- State	Total	In- State	Out-of- State	Total	In- State	Out-of- State	Total	In- State	Out-of- State	Total
Pittsburgh Campus	Full-Time	11,984	6,359	18,343	1,621	3,568	5,189	1,216	875	2,091	14,821	10,802	25,623
	Part-Time	764	93	857	1,303	277	1,580	261	70	331	2,328	440	2,768
	Total	12,748	6,452	19,200	2,924	3,845	6,769	1,477	945	2,422	17,149	11,242	28,391
Johnstown Campus	Full-Time	2,284	119	2,403							2,284	119	2,403
	Part-Time	56	3	59							56	3	59
	Total	2,340	122	2,462							2,340	122	2,462
Greensburg Campus	Full-Time	1,280	79	1,359							1,280	79	1,359
	Part-Time	80		80							80		80
	Total	1,360	79	1,439							1,360	79	1,439
Titusville Campus	Full-Time	108	3	111							108	3	111
	Part-Time	24		24							24		24
	Total	132	3	135							132	3	135
Bradford Campus	Full-Time	924	326	1,250							924	326	1,250
	Part-Time	58	9	67							58	9	67
	Total	982	335	1,317							982	335	1,317
University Total		17,562	6,991	24,553	2,924	3,845	6,769	1,477	945	2,422	21,963	11,781	33,744

## DEGREE AND CERTIFICATE PROGRAMS



**DEGREE AND CERTIFICATE PROGRAMS OFFERED BY SCHOOL AND DEGREE AND CERTIFICATE TYPE — FALL TERM 2019**

School/Campus and Program	Undergraduate Certificate	Graduate Certificate	Associate	Baccalaureate	Master's	Doctorate Research/Scholarship	Doctorate Professional Practice
<b>Dietrich School of Arts and Sciences - Humanities</b>							
Architecture				BS			
American Sign Language	Undergraduate Certificate						
Arabic Language and Linguistics	Undergraduate Certificate						
Architectural Studies				BA			
Bioethics					MA		
Children's Literature	Undergraduate Certificate						
Chinese				BA			
Classics				BA	MA	PhD	
Communication: Rhetoric and Communication				BA	MA	PhD	
Composition, Literacy, and Pedagogy		Graduate Certificate					
Critical European Culture Studies						PhD	
Cultural Studies		Graduate Certificate					
Digital Narrative and Interactive Design				BA			
Digital Studies and Methods		Graduate Certificate					
East Asian Studies					MA		
English					MA MFA	PhD	
English Literature				BA			
English Writing				BA			
Film and Media Studies		Graduate Certificate		BA	MA	PhD	
French				BA	MA	PhD	
German Language	Undergraduate Certificate						
German Language and Cultural Studies				BA			
Hispanic Language and Literature					MA	PhD	
Hispanic Linguistics					MA	PhD	
History and Philosophy of Science				BA	MA	PhD	
History of Art and Architecture				BA	MA	PhD	
Interdisciplinary German Studies				BA			
Italian				BA	MA		
Italian Studies				BA			
Japanese				BA			
Jewish Studies	Undergraduate Certificate						
Linguistics				BA	MA	PhD	
Medieval and Renaissance Studies	Undergraduate Certificate	Graduate Certificate					
Music				BA	MA	PhD	
Philosophy				BA	MA	PhD	
Polish				BA			
Public and Professional Writing	Undergraduate Certificate			BA			
Religious Studies				BA			
Russian				BA			
Slavic Languages and Literatures					MA	PhD	
Spanish				BA			
Studio Arts				BA			
Teaching English to Speakers of Other Languages		Graduate Certificate			MA		
Theatre Arts				BA	MA MFA	PhD	
<b>Dietrich School of Arts and Sciences - Natural Sciences</b>							
Actuarial Mathematics				BS			
Applied Mathematics				BS	MA MS		
Applied Statistics					MA MS		
Astronomy				BA			
Biological Sciences				BS	MS	PhD	

**DEGREE AND CERTIFICATE PROGRAMS OFFERED BY SCHOOL AND DEGREE AND CERTIFICATE TYPE — FALL TERM 2019 (continued)**

School/Campus and Program	Undergraduate Certificate	Graduate Certificate	Associate	Baccalaureate	Master's	Doctorate Research/Scholarship	Doctorate Professional Practice
<b>Dietrich School of Arts and Sciences - Natural Sciences (continued)</b>							
Chemistry				BS	MS	PhD	
Combined				BS			
Computational Biology				BS	MS	PhD	
Ecology and Evolution				BS			
Environmental Science				BS			
Environmental Studies				BA			
Geographic Information Systems	Undergraduate Certificate						
Geographical Information Systems					MS		
Geology				BS			
Geology and Environmental Science					MS	PhD	
Life Sciences Research	Undergraduate Certificate						
Mathematical Biology				BS			
Mathematics				BS	MA MS	PhD	
Mathematics-Economics				BS			
Microbiology				BS			
Molecular Biology				BS			
Molecular Biophysics and Structural Biology					MS	PhD	
NanoScience and Engineering	Undergraduate Certificate						
Neuroscience				BS	MS	PhD	
Photonics	Undergraduate Certificate						
Physics				BS	MS	PhD	
Physics and Astronomy				BS			
Psychology				BS	MS	PhD	
Statistics				BS	MA MS	PhD	
Sustainability	Undergraduate Certificate						
<b>Dietrich School of Arts and Sciences - Social Sciences</b>							
Africana Studies				BA			
Anthropology				BA	MA	PhD	
Economics				BA BS	MA	PhD	
Economics - Statistics				BS			
History				BA	MA	PhD	
Political Science				BA BS	MA	PhD	
Quantitative Economics					MS		
Sociology				BA	MA	PhD	
Urban Studies				BA			
<b>Dietrich School of Arts and Sciences - Other</b>							
Africana Studies - English				BA			
Computational Modeling and Simulation					MS	PhD	
Conceptual Foundations of Medicine	Undergraduate Certificate						
Gender, Sexuality, and Women's Studies		Graduate Certificate		BA			
Interdisciplinary Studies				BA BS			
International and Area Studies				BPhil			
Politics - Philosophy				BA			
<b>College of General Studies</b>							
Accounting	Undergraduate Certificate						
Administration of Justice				BA			
Communication	Undergraduate Certificate						
Community Health Assessment	Undergraduate Certificate						

**DEGREE AND CERTIFICATE PROGRAMS OFFERED BY SCHOOL AND DEGREE AND CERTIFICATE TYPE — FALL TERM 2019 (continued)**

School/Campus and Program	Undergraduate Certificate	Graduate Certificate	Associate	Baccalaureate	Master's	Doctorate Research/Scholarship	Doctorate Professional Practice
<b>College of General Studies (continued)</b>							
Corporate/Community Relations	Undergraduate Certificate						
Dental Hygiene				BS			
Digital Media	Undergraduate Certificate						
Gender, Sexuality, and Women's Studies	Undergraduate Certificate						
Health Services				BA BS			
Humanities Area				BA			
Information Systems Design	Undergraduate Certificate						
Leadership	Undergraduate Certificate						
Legal Studies				BA			
Managing Health Services Programs and Projects	Undergraduate Certificate						
Media and Professional Communications				BA			
National Preparedness and Homeland Security	Undergraduate Certificate						
Natural Sciences Area				BS			
Nonprofit Management	Undergraduate Certificate						
Public Service				BA			
Social Sciences Area				BA			
Writing for the Professions	Undergraduate Certificate						
<b>Honors College</b>							
Bachelor of Philosophy				BPhil			
<b>Katz Graduate School of Business</b>							
Accounting					MS		
Accounting and Business Analytics					MS		
Business Administration					MBA	PhD	
Business Administration with Business Analytics					MBA		
Business Analytics		Graduate Certificate					
Finance					MS		
Finance and Business Analytics					MS		
International Business					MIB		
Management					MS		
Management and Business Analytics					MS		
Management of Information Systems					MS		
Marketing Science					MS		
Marketing Science and Business Analytics					MS		
Supply Chain Management					MS		
Supply Chain Management and Business Analytics					MS		
<b>School of Education</b>							
Administrative and Policy Studies					MA MEd	PhD	EdD
Applied Behavior Analysis		Graduate Certificate					
Applied Developmental Psychology				BS			
Autism		Graduate Certificate					
Educational Administration		Graduate Certificate					
Educational Supervision		Graduate Certificate					
Health and Physical Activity				BS	MS	PhD	EdD
Infant Mental Health		Graduate Certificate					
Instruction and Learning					MAT MEd	PhD	EdD
Learning Sciences and Policy						PhD	EdD

**DEGREE AND CERTIFICATE PROGRAMS OFFERED BY SCHOOL AND DEGREE AND CERTIFICATE TYPE — FALL TERM 2019 (continued)**

School/Campus and Program	Undergraduate Certificate	Graduate Certificate	Associate	Baccalaureate	Master's	Doctorate Research/Scholarship	Doctorate Professional Practice
<b>School of Education (continued)</b>							
Orientation and Mobility		Graduate Certificate					
Psychology in Education					MA MS MEd	PhD	EdD
Reading (Specialist)		Graduate Certificate					
Science, Technology, Engineering, Art, and Mathematics		Graduate Certificate					
Teaching		Graduate Certificate					
Urban Education		Graduate Certificate				PhD	
<b>Swanson School of Engineering</b>							
Bioengineering				BSE	MSBENG	PhD	
Chemical Engineering				BSE	MSChE	PhD	
Civil Engineering				BSE	MSCE	PhD	
Civil Engineering and Architectural Studies	Undergraduate Certificate						
Computational Modeling and Simulation					MS	PhD	
Computer Engineering				BSE			
Construction Management		Graduate Certificate					
Electric Power Engineering		Graduate Certificate					
Electrical and Computer Engineering					MSECE	PhD	
Electrical Engineering				BSE			
Energy Resource Utilization	Undergraduate Certificate						
Engineering for Humanity	Undergraduate Certificate						
Engineering Science				BSE			
Engineering Simulation in Design	Undergraduate Certificate						
Engineering and Technology Management		Graduate Certificate					
Environmental Engineering				BSE			
Fessenden Honors Engineering	Undergraduate Certificate						
Health Systems Engineering	Undergraduate Certificate						
Healthcare Systems Engineering		Graduate Certificate					
Industrial Engineering				BSE	MSIE	PhD	
Innovation, Product Design, and Entrepreneurship	Undergraduate Certificate						
Interdisciplinary PhD Program						PhD	
International Engineering Studies	Undergraduate Certificate						
Manufacturing Systems Engineering					MSMFSE		
Materials Science and Engineering				BSE	MSMSE	PhD	
Mechanical Engineering				BSE	MSME	PhD	
Medical Product Innovation		Graduate Certificate					
Metallurgical Engineering					MSMETE	PhD	
Mining Engineering	Undergraduate Certificate	Graduate Certificate					
NanoScience and Engineering	Undergraduate Certificate						
Nuclear Engineering	Undergraduate Certificate	Graduate Certificate			MSNE		
Petroleum Engineering					MSPE		
Processing, Properties, and Performance of Eng. Metals		Graduate Certificate					
Safety Engineering		Graduate Certificate					
Supply Chain Management	Undergraduate Certificate						
Sustainability	Undergraduate Certificate						
Sustainable Engineering	Undergraduate Certificate				MSSE		
<b>School of Law</b>							
Civil Litigation		Graduate Certificate					
Disability Legal Studies		Graduate Certificate					
Health Care Compliance		Graduate Certificate					
Health Law		Graduate Certificate					



**DEGREE AND CERTIFICATE PROGRAMS OFFERED BY SCHOOL AND DEGREE AND CERTIFICATE TYPE — FALL TERM 2019 (continued)**

School/Campus and Program	Undergraduate Certificate	Graduate Certificate	Associate	Baccalaureate	Master's	Doctorate Research/Scholarship	Doctorate Professional Practice
<b>School of Law (continued)</b>							
Human Resource Law		Graduate Certificate					
International and Comparative Law		Graduate Certificate			LLM		
Law					MSL	SJD	JD
<b>Graduate School of Public and International Affairs</b>							
Cybersecurity, Policy, and Law		Graduate Certificate					
Energy and Environment					MPA MID		
Governance and International Public Management					MPA MID		
Human Security					MPIA MID		
International Political Economy					MPIA		
Non-Government Organizations and Civil Society					MID		
Policy Research and Analysis					MPA		
Public and International Affairs					MPA	PhD	
Public and Nonprofit Management					MPA		
Public Policy and Management					MPPM		
Security and Intelligence Studies					MPIA		
Social Policy					MPA MID		
Urban Affairs and Planning					MPA MID		
<b>School of Social Work</b>							
Behavioral Health Case Management	Undergraduate Certificate						
Gerontology		Graduate Certificate					
Integrated Health Care		Graduate Certificate					
Social Work				BASW	MSW	PhD	
<b>School of Computing and Information</b>							
Big Data Analytics		Graduate Certificate					
Computational Biology				BS			
Computational Modeling and Simulation					MS	PhD	
Computer Science				BS	MS	PhD	
Cybersecurity, Policy and Law		Graduate Certificate					
Digital Narrative and Interactive Design				BS			
Information and Network Security		Graduate Certificate					
Information Science		Graduate Certificate		BS	MSIS	PhD	
Intelligent Systems					MS	PhD	
Library and Information Science						PhD	
Telecommunications		Graduate Certificate			MST		
<b>College of Business Administration</b>							
Accounting				BSBA			
Business Analytics	Undergraduate Certificate						
Business Information Systems				BSBA			
Finance				BSBA			
Global Management				BSBA			
Human Resources Management				BSBA			
Innovation and Entrepreneurship	Undergraduate Certificate						
International Business	Undergraduate Certificate						
Leadership and Ethics	Undergraduate Certificate						
Marketing				BSBA			
Sports Management	Undergraduate Certificate						

**DEGREE AND CERTIFICATE PROGRAMS OFFERED BY SCHOOL AND DEGREE AND CERTIFICATE TYPE — FALL TERM 2019 (continued)**

School/Campus and Program	Undergraduate Certificate	Graduate Certificate	Associate	Baccalaureate	Master's	Doctorate Research/Scholarship	Doctorate Professional Practice
<b>School of Dental Medicine</b>							
Anesthesiology		Graduate Certificate					
Dental Hygiene	Undergraduate Certificate		AS				
Dental Medicine							DMD
Dental Public Health		Graduate Certificate					
Endodontics		Graduate Certificate			MDS		
Oral and Maxillofacial Pathology		Graduate Certificate					
Oral Biology					MS	PhD	
Orthodontics and Dentofacial Orthopedics		Graduate Certificate			MDS		
Pediatric Dentistry		Graduate Certificate			MDS		
Periodontics		Graduate Certificate			MDS		
Prosthodontics		Graduate Certificate			MDS		
<b>School of Nursing</b>							
Adult-Gerontology Acute Care Nurse Practitioner		Graduate Certificate					
Clinical Nurse Specialist							DNP
Gerontology for Nurse Practitioners		Graduate Certificate					
Health Care Genetics		Graduate Certificate					
Neonatal Nurse Practitioner		Graduate Certificate					
Nurse Anesthesia							DNP
Nurse Midwife							DNP
Nurse Practitioner					MSN		DNP
Nurse Specialty Role					MSN		DNP
Nursing				BSN		PhD	
Nursing Case Management for Primary Care		Graduate Certificate					
Nursing Education		Graduate Certificate					
Nursing Informatics		Graduate Certificate					
Nursing Research		Graduate Certificate					
Pediatric Acute Care Nurse Practitioner		Graduate Certificate					
Psychiatric Mental Health Nurse Practitioner		Graduate Certificate					
School Nurse		Graduate Certificate					
<b>School of Pharmacy</b>							
Pharmaceutical Sciences				BSPS	MS	PhD	
Pharmacy					MS		PharmD
Pharmacy Administration					MS		
Pharmacy Business Administration		Graduate Certificate			MPBA		
<b>Graduate School of Public Health</b>							
Behavioral and Community Health Sciences					MPH	PhD DRPH	
Biostatistics					MS	PhD	
Community-Based Participatory Research and Practice		Graduate Certificate					
Environmental and Occupational Health					MS MPH	PhD	
Environmental Health Risk Assessment		Graduate Certificate					
Epidemiology					MS MPH	PhD DRPH	
Evaluation of Pub Hlth Promotion and Health Ed Programs		Graduate Certificate					
Genetic Counseling					MS		
Genome Bioinformatics					MS		
Global Health		Graduate Certificate					
Health Equity		Graduate Certificate					

**DEGREE AND CERTIFICATE PROGRAMS OFFERED BY SCHOOL AND DEGREE AND CERTIFICATE TYPE — FALL TERM 2019 (continued)**

School/Campus and Program	Undergraduate Certificate	Graduate Certificate	Associate	Baccalaureate	Master's	Doctorate Research/Scholarship	Doctorate Professional Practice
<b>Graduate School of Public Health (continued)</b>							
Health Policy and Management					MHA MPH		
Health Services Research and Policy					MS	PhD	
Health Systems Leadership and Management		Graduate Certificate					
Healthcare Systems Engineering		Graduate Certificate					
Human Genetics					MS	PhD	
Infectious Diseases and Microbiology					MS MPH	PhD	
LGBT Health and Wellness		Graduate Certificate					
Multidisciplinary MPH Program					MPH		
Public Health Genetics		Graduate Certificate			MPH		
<b>School of Medicine</b>							
Biomedical Informatics		Graduate Certificate			MS	PhD	
Biomedical Sciences					MS		
Cell Biology and Molecular Physiology					MS	PhD	
Cellular and Molecular Pathology					MS	PhD	
Clinical and Translational Science						PhD	
Clinical Research		Graduate Certificate			MS		
Computational Biology					MS	PhD	
Computational Biomedicine and Biotechnology					MS		
Integrative Systems Biology					MS	PhD	
Medical Education		Graduate Certificate			MS		
Medicine (Professional Program)							MD
Microbiology and Immunology					MS	PhD	
Molecular Biophysics and Structural Biology					MS	PhD	
Molecular Genetics and Developmental Biology					MS	PhD	
Molecular Pharmacology					MS	PhD	
Neurobiology					MS	PhD	
<b>School of Health and Rehabilitation Sciences</b>							
Assistive Technology in Rehabilitation	Undergraduate Certificate						
Athletic Training				BS			
Audiology							AuD
Clinical Rehabilitation and Mental Health Counseling					MS		
Communication Science				BA			
Communication Science and Disorders					MA MS	PhD	
Disability Studies		Graduate Certificate					
Emergency Medicine				BS			
Emergency Medicine in Rehabilitation	Undergraduate Certificate						
Health and Rehabilitation Sciences					MS		
Health Data Analytics		Graduate Certificate					
Health Informatics					MS		
Health Information Cybersecurity		Graduate Certificate					
Health Information Management				BS			
Leadership in Health Informatics		Graduate Certificate					
Nutrition and Dietetics					MS		
Occupational Therapy					MS MOT		CSCD OTD
Pathokinesiology in Rehabilitation	Undergraduate Certificate						
Physical Therapy							DPT
Physician Assistant Studies					MS		

**DEGREE AND CERTIFICATE PROGRAMS OFFERED BY SCHOOL AND DEGREE AND CERTIFICATE TYPE — FALL TERM 2019 (continued)**

School/Campus and Program	Undergraduate Certificate	Graduate Certificate	Associate	Baccalaureate	Master's	Doctorate Research/Scholarship	Doctorate Professional Practice
<b>School of Health and Rehabilitation Sciences (continued)</b>							
Prosthetics and Orthotics					MS		
Psycho-Social Issues in Rehabilitation	Undergraduate Certificate						
Rehabilitation Science				BS		PhD	
Rehabilitation Technology		Graduate Certificate					
Revenue Cycle Management		Graduate Certificate					
Speech-Language Pathology							CSCD
<b>University Center for International Studies</b>							
African Studies	Undergraduate Certificate	Graduate Certificate					
Asian Studies	Undergraduate Certificate	Graduate Certificate					
Eastern European Studies		Graduate Certificate					
European Union Studies	Undergraduate Certificate	Graduate Certificate					
Global Health	Undergraduate Certificate						
Global Studies	Undergraduate Certificate	Graduate Certificate					
Latin American Social and Public Policy		Graduate Certificate					
Latin American Studies	Undergraduate Certificate	Graduate Certificate					
Russian and East European Study	Undergraduate Certificate						
Russian Studies	Undergraduate Certificate	Graduate Certificate					
Soviet Studies		Graduate Certificate					
Transatlantic Studies	Undergraduate Certificate						
West European Studies	Undergraduate Certificate	Graduate Certificate					
<b>University Center for Social and Urban Research</b>							
Gerontology		Graduate Certificate					
<b>Johnstown - Business and Enterprise</b>							
Accounting				BS			
Business	Undergraduate Certificate						
Economics				BA			
Finance				BS			
Information Systems				BS			
Management				BS			
Marketing				BS			
<b>Johnstown - Education</b>							
Early Childhood Education				BS			
Early Childhood Education with Special Education				BA			
Middle Level Education				BS			
Middle Level Education with Special Education				BA			
Secondary Education				BA	BS		
<b>Johnstown - Engineering and Computer Science</b>							
Chemical Engineering				BSE			
Civil Engineering				BSE			
Computer Engineering				BSE			
Computer Science				BS			
Electrical Engineering				BSE			
Mechanical Engineering				BSE			

## DEGREE AND CERTIFICATE PROGRAMS OFFERED BY SCHOOL AND DEGREE AND CERTIFICATE TYPE — FALL TERM 2019 (continued)

School/Campus and Program	Undergraduate Certificate	Graduate Certificate	Associate	Baccalaureate	Master's	Doctorate Research/Scholarship	Doctorate Professional Practice
<b>Johnstown - Humanities</b>							
Communication				BA			
English Literature				BA			
Humanities				BA			
Journalism				BA			
Multimedia and Digital Culture				BA			
Theatre Arts				BA			
Writing				BA			
<b>Johnstown - Natural Sciences</b>							
Biochemistry				BS			
Biology				BS			
Chemistry				BS			
Energy and Earth Resources				BS			
Mathematics				BS			
Natural Science				BS			
Psychology				BS			
<b>Johnstown - Nursing and Health Sciences</b>							
Healthcare Management and Supervision				BS			
Nursing				BSN			
Respiratory Care			AS				
Surgical Technology			AS				
<b>Johnstown - Social Sciences</b>							
Environmental Studies				BA			
Geographic Information Systems	Undergraduate Certificate						
Geography				BA			
History				BA			
International Studies	Undergraduate Certificate						
Justice Administration and Criminology				BA			
Political Science				BA			
Social Sciences				BA			
Sociology				BA			
<b>Johnstown - Other Programs</b>							
Self Design				BA	BS		
<b>Greensburg - Behavioral Sciences</b>							
American Studies				BA			
Anthropology				BA			
Criminal Justice				BA			
Early Childhood Education				BS			
Healthcare Management				BS			
History				BA			
Latin American Studies	Undergraduate Certificate						
Management				BS			
Management Information Systems				BS			
Management-Accounting				BS			
Manufacturing Management	Undergraduate Certificate						
Political Science				BA			

## DEGREE AND CERTIFICATE PROGRAMS OFFERED BY SCHOOL AND DEGREE AND CERTIFICATE TYPE — FALL TERM 2019 (continued)

School/Campus and Program	Undergraduate Certificate	Graduate Certificate	Associate	Baccalaureate	Master's	Doctorate Research/Scholarship	Doctorate Professional Practice
<b>Greensburg - Behavioral Sciences (continued)</b>							
Psychology				BS			
Public Policy				BS			
Secondary Education				BS			
Social Sciences Area				BA			
Spanish Education				BS			
<b>Greensburg - Humanities</b>							
Arts Entrepreneurship	Undergraduate Certificate						
Children's Literature	Undergraduate Certificate						
Communication: Rhetoric and Communication				BA			
Creative and Professional Writing				BA			
Digital Studies	Undergraduate Certificate						
English Literature				BA			
English Writing				BA			
Humanities Area				BA			
Self-Design				BA	BS		
Spanish				BA			
Visual and Performing Arts				BA			
<b>Greensburg - Natural Sciences</b>							
Applied Mathematics				BS			
Biochemistry				BS			
Biological Sciences				BS			
Chemistry				BS			
Information Technology				BS			
Natural Sciences Area				BS			
Nursing				BSN			
<b>Titusville</b>							
Nursing			AS				
Physical Therapist Assistant			AS				
<b>Bradford - Behavioral and Social Sciences</b>							
Criminal Justice				BA			
Environmental Studies				BA			
General Studies				BA			
History - Political Science				BA			
International Affairs				BA			
Liberal Studies			AA				
Psychology				BS			
Sociology				BA			
<b>Bradford - Biological and Health Sciences</b>							
Biology				BS			
Exercise Science				BS			
Nursing			AS	BSN			
Radiological Science				BS			
<b>Bradford - Communications and the Arts</b>							
Broadcast Communications				BA			
Communications				BA			
English				BA			
Interdisciplinary Arts				BA			

**DEGREE AND CERTIFICATE PROGRAMS OFFERED BY SCHOOL AND DEGREE AND CERTIFICATE TYPE — FALL TERM 2019 (continued)**

School/Campus and Program	Undergraduate Certificate	Graduate Certificate	Associate	Baccalaureate	Master's	Doctorate Research/Scholarship	Doctorate Professional Practice
<b>Bradford - Management and Education</b>							
Accounting				BS			
Biology Education 7-12				BS			
Business, Computer and Information Technology				BS			
Business Management				BS			
Chemistry Education 7-12				BS			
Computer Information Systems and Technology				BS			
Early Level Education (Pre K- 4)				BS			
Economics				BA			
English Education 7-12				BS			
Health and Physical Education				BS			
Hospitality Management				BS			
Information Systems			AS				
Mathematics Education 7-12				BS			
Social Studies Education 7-12				BS			
Sport and Recreation Management				BS			
<b>Bradford - Physical and Computational Sciences</b>							
Applied Mathematics				BS			
Chemistry				BS			
Energy Science and Technology				BS			
Engineering Science			AS				
Forensic Science				BS			
Petroleum Technology			AS				
Physical Sciences				BS			

Notes: In this table, the schools are listed in the same order as is used in presenting student enrollment information in the Student Information section of the *Fact Book*.

The degree and certificate programs listed are those in which students may enroll as in presently available to students who wish to declare a major in them.

Application to certain programs and the conferring of specific, non-terminal degrees in these programs are contingent upon departmental guidelines. That is, some students in some doctoral programs may wish to conclude their studies with a Master's degree.

The Bachelor of Philosophy degree (BPhil) is offered through the Honors College and is available in all baccalaureate programs. As such, it is enumerated only once in this table. The one exception is the Dietrich School of Arts and Sciences degree program, International and Area Studies, in which the sole baccalaureate awarded is the BPhil.

Offered in addition to the programs listed here are the combined major and numerous dual, joint, and cooperative degree programs.

## NUMBER OF DEGREE PROGRAMS OFFERED BY DEGREE CATEGORY AND DEGREE TYPE, PITTSBURGH CAMPUS, REGIONAL CAMPUSES, AND UNIVERSITY TOTAL — FALL TERM 2019

<b>PITTSBURGH CAMPUS</b>		
<b>Certificates</b>		
Undergraduate Certificate		62
Graduate Certificate		89
<b>Certificates Total</b>		<b>151</b>
<b>Degree Programs</b>		
<b>Associate Degree Programs</b>		
Associate of Science	AS	1
<b>Associate Degree Programs Total</b>		<b>1</b>
<b>Baccalaureate Degree Programs</b>		
Bachelor of Arts	BA	47
Bachelor of Arts in Social Work	BASW	1
Bachelor of Philosophy	BPhil	2
Bachelor of Science	BS	38
Bachelor of Science in Business Administration	BSBA	7
Bachelor of Science in Engineering	BSE	10
Bachelor of Science in Nursing	BSN	1
Bachelor of Science in Pharmaceutical Sciences	BSPS	1
<b>Baccalaureate Degree Programs Total</b>		<b>107</b>
<b>Master's Degree Programs</b>		
Master of Arts	MA	30
Master of Arts in Teaching	MAT	1
Master of Business Administration	MBA	2
Master of Dental Science	MDS	5
Master of Education	MEd	3
Master of Fine Arts	MFA	2
Master of Health Administration	MHA	1
Master of International Business	MIB	1
Master of International Development	MID	6
Master of Laws	LLM	1
Master of Occupational Therapy	MOT	1
Master of Pharmacy Business Administration	MPBA	1
Master of Public Administration	MPA	7
Master of Public Health	MPH	7
Master of Public and International Affairs	MPIA	3
Master of Public Policy and Management	MPPM	1
Master of Science	MS	66
Master of Science in Bioengineering	MSBENG	1
Master of Science in Chemical Engineering	MSChE	1
Master of Science in Civil Engineering	MSCE	1
Master of Electrical and Computer Engineering	MSECE	1
Master of Science in Industrial Engineering	MSIE	1
Master of Science in Information Science	MSIS	1
Master of Science in Manufacturing Systems Engineering	MSMFSE	1
Master of Science in Materials Science and Engineering	MSMSE	1
Master of Science in Mechanical Engineering	MSME	1



**NUMBER OF DEGREE PROGRAMS OFFERED BY DEGREE CATEGORY AND DEGREE TYPE,  
PITTSBURGH CAMPUS, REGIONAL CAMPUSES, AND UNIVERSITY TOTAL — FALL TERM 2019 (continued)**

<b>PITTSBURGH CAMPUS (continued)</b>		
<b>Master's Degree Programs (continued)</b>		
Master of Science in Metallurgical Engineering	MSMETE	1
Master of Science in Nuclear Engineering	MSNE	1
Master of Science in Nursing	MSN	2
Master of Science in Petroleum Engineering	MSPE	1
Master of Science in Telecommunications	MST	1
Master of Social Work	MSW	1
Master of Studies in Law	MSL	1
Master of Sustainable Engineering	MSSE	1
<b>Master's Degree Programs Total</b>		<b>156</b>
<b>Doctorate - Research/Scholarship Degree Programs</b>		
Doctor of Jurisprudence	SJD	1
Doctor of Philosophy	PhD	78
Doctor of Public Health	DrPH	2
<b>Doctorate - Research/Scholarship Degree Programs Total</b>		<b>81</b>
<b>Doctorate - Professional Practice Degree Programs</b>		
Doctor of Audiology	AuD	1
Doctor of Clinical Science	CSCD	2
Doctor of Dental Medicine	DMD	1
Doctor of Education	EdD	5
Doctor of Medicine	MD	1
Doctor of Nursing Practice	DNP	5
Doctor of Pharmacy	PharmD	1
Doctor of Occupational Therapy	OTD	1
Doctor of Physical Therapy	DPT	1
Juris Doctor	JD	1
<b>Doctorate - Professional Practice Degree Programs Total</b>		<b>19</b>
<b>Pittsburgh Campus Degree Programs Total</b>		<b>364</b>
<b>PITTSBURGH CAMPUS TOTALS</b>		
<b>Pittsburgh Campus Certificates Total</b>		<b>151</b>
<b>Pittsburgh Campus Degree Programs Total</b>		<b>364</b>
<b>Pittsburgh Campus Certificates and Degree Programs Total</b>		<b>515</b>
<b>REGIONAL CAMPUSES</b>		
<b>JOHNSTOWN CAMPUS</b>		
<b>Certificates</b>		
Undergraduate Certificate		3
<b>Certificates Total</b>		<b>3</b>

**NUMBER OF DEGREE PROGRAMS OFFERED BY DEGREE CATEGORY AND DEGREE TYPE,  
PITTSBURGH CAMPUS, REGIONAL CAMPUSES, AND UNIVERSITY TOTAL — FALL TERM 2019 (continued)**

<b>JOHNSTOWN CAMPUS (continued)</b>		
<b>Degree Programs</b>		
<b>Associate Degree Programs</b>		
Associate of Science	AS	2
<b>Associate Degree Programs Total</b>		<b>2</b>
<b>Baccalaureate Degree Programs</b>		
Bachelor of Arts	BA	19
Bachelor of Science	BS	18
Bachelor of Science in Engineering	BSE	5
Bachelor of Science in Nursing	BSN	1
<b>Baccalaureate Degree Programs Total</b>		<b>43</b>
<b>Johnstown Campus Degree Programs Total</b>		<b>45</b>
<b>JOHNSTOWN CAMPUS TOTALS</b>		
<b>Johnstown Campus Certificates Total</b>		<b>3</b>
<b>Johnstown Campus Degree Programs Total</b>		<b>45</b>
<b>Johnstown Campus Certificates and Degree Programs Total</b>		<b>48</b>
<b>GREENSBURG CAMPUS</b>		
<b>Certificates</b>		
Undergraduate Certificate		5
<b>Certificates Total</b>		<b>5</b>
<b>Degree Programs</b>		
<b>Baccalaureate Degree Programs</b>		
Bachelor of Arts	BA	14
Bachelor of Science	BS	16
Bachelor of Science in Nursing	BSN	1
<b>Baccalaureate Degree Programs Total</b>		<b>31</b>
<b>Greensburg Campus Degree Programs Total</b>		<b>31</b>
<b>GREENSBURG CAMPUS TOTALS</b>		
<b>Greensburg Campus Certificates Total</b>		<b>5</b>
<b>Greensburg Campus Degree Programs Total</b>		<b>31</b>
<b>Greensburg Campus Certificates and Degree Programs Total</b>		<b>36</b>
<b>TITUSVILLE CAMPUS</b>		
<b>Degree Programs</b>		
<b>Associate Degree Program</b>		
Associate of Science	AS	2
<b>Associate Degree Program Total</b>		<b>2</b>
<b>TITUSVILLE CAMPUS TOTALS</b>		
<b>Titusville Campus Degree Programs Total</b>		<b>2</b>

**NUMBER OF DEGREE PROGRAMS OFFERED BY DEGREE CATEGORY AND DEGREE TYPE,  
PITTSBURGH CAMPUS, REGIONAL CAMPUSES, AND UNIVERSITY TOTAL — FALL TERM 2019 (continued)**

<b>BRADFORD CAMPUS</b>			
<b>Degree Programs</b>			
<b>Associate Degree Programs</b>			
Associate of Arts	AA		1
Associate of Science	AS		4
<b>Associate Degree Programs Total</b>			<b>5</b>
<b>Baccalaureate Degree Programs</b>			
Bachelor of Arts	BA		12
Bachelor of Science	BS		22
Bachelor of Science in Nursing	BSN		1
<b>Baccalaureate Degree Programs Total</b>			<b>35</b>
<b>Bradford Campus Degree Programs Total</b>			<b>40</b>
<b>BRADFORD CAMPUS TOTALS</b>			
<b>Bradford Campus Degree Programs Total</b>			<b>40</b>
<b>REGIONAL CAMPUSES TOTALS</b>			
<b>Regional Campuses Certificates Total</b>			<b>8</b>
<b>Regional Campuses Degree Programs Total</b>			<b>118</b>
<b>Regional Campuses Certificates And Degree Programs Total</b>			<b>126</b>
<b>UNIVERSITY TOTALS</b>			
<b>University Certificates Total</b>			<b>159</b>
<b>University Degree Programs Total</b>			<b>482</b>
<b>University Certificates And Degree Programs Total</b>			<b>641</b>

Notes: In this table, the schools are listed in the same order as is used in presenting student enrollment information in the Student Information section of the *Fact Book*.

The degree and certificate programs listed are those in which students may enroll as is presently available to students who wish to declare a major in them.

Application to certain programs and the conferring of specific, non-terminal degrees in these programs are contingent upon departmental guidelines. That is, some students in some doctoral programs may wish to conclude their studies with a Master's degree.

The Bachelor of Philosophy degree (BPhil) is offered through the Honors College and is available in all baccalaureate programs. As such, it is enumerated only once in this table. The one exception is the Dietrich School of Arts and Sciences degree program, International and Area Studies, in which the sole baccalaureate awarded is the BPhil.

### NUMBER OF CERTIFICATE AND DEGREE PROGRAMS OFFERED BY CERTIFICATE/DEGREE CATEGORY AND SCHOOL PITTSBURGH CAMPUS, REGIONAL CAMPUSES, AND UNIVERSITY TOTAL — FALL TERM 2019

SCHOOL	Certificate			Degree						Certificate and Degree Total
	Under-graduate	Graduate	Certificate Total	Associate	Baccalaureate	Master's	Doctorate		Degree Total	
							Scholarship	Professional Practice		
Pittsburgh Campus										
Dietrich School of Arts and Sciences	13	7	20	0	65	44	31	0	140	160
College of General Studies	12	0	12	0	10	0	0	0	10	22
Honors College	0	0	0	0	1	0	0	0	1	1
Katz Graduate School of Business	0	1	1	0	0	14	1	0	15	16
School of Education	0	10	10	0	2	8	6	5	21	31
Swanson School of Engineering	14	9	23	0	10	13	10	0	33	56
School of Law	0	6	6	0	0	2	1	1	4	10
Graduate School of Public and International Affairs	0	1	1	0	0	17	1	0	18	19
School of Social Work	1	2	3	0	1	1	1	0	3	6
School of Computing and Information	0	5	5	0	4	5	5	0	14	19
College of Business Administration	6	0	6	0	7	0	0	0	7	13
School of Dental Medicine	1	8	9	1	0	6	1	1	9	18
School of Nursing	0	11	11	0	1	2	1	5	9	20
School of Pharmacy	0	1	1	0	1	4	1	1	7	8
Graduate School of Public Health	0	9	9	0	0	16	9	0	25	34
School of Medicine	0	3	3	0	0	14	11	1	26	29
School of Health and Rehabilitation Sciences	4	6	10	0	5	10	2	5	22	32
University Center for International Studies	10	10	20	0	0	0	0	0	0	20
University Center for Social and Urban Research	1	0	1	0	0	0	0	0	0	1
<b>Pittsburgh Campus Total</b>	<b>62</b>	<b>89</b>	<b>151</b>	<b>1</b>	<b>107</b>	<b>156</b>	<b>81</b>	<b>19</b>	<b>364</b>	<b>515</b>
Regional Campuses										
Johnstown	3	0	3	2	43	0	0	0	45	48
Greensburg	5	0	5	0	31	0	0	0	31	36
Titusville	0	0	0	2	0	0	0	0	2	2
Bradford	0	0	0	5	35	0	0	0	40	40
<b>Regional Campuses Total</b>	<b>8</b>	<b>0</b>	<b>8</b>	<b>9</b>	<b>109</b>	<b>0</b>	<b>0</b>	<b>0</b>	<b>118</b>	<b>126</b>
<b>UNIVERSITY TOTAL</b>	<b>70</b>	<b>89</b>	<b>159</b>	<b>10</b>	<b>216</b>	<b>156</b>	<b>81</b>	<b>19</b>	<b>482</b>	<b>641</b>

Notes: In this table, the schools are listed in the same order as is used in presenting student enrollment information in the Student Information section of the *Fact Book*.

The degree and certificate programs listed are those in which students may enroll as in presently available to students who wish to declare a major in them.

Application to certain programs and the conferring of specific, non-terminal degrees in these programs are contingent upon departmental guidelines. That is, some students in some doctoral programs may wish to conclude their studies with a Master's degree.

The Bachelor of Philosophy degree (BPhil) is offered through the Honors College and is available in all baccalaureate programs. As such, it is enumerated only once in this table. The one exception is the Dietrich School of Arts and Sciences degree program, International and Area Studies, in which the sole baccalaureate awarded is the BPhil.

## DEGREES AND CERTIFICATES AWARDED BY CAMPUS AND CERTIFICATE/DEGREE CATEGORY — FISCAL YEAR 2015-2019

			2015	2016	2017	2018	2019
Pittsburgh Campus	Certificate	Undergraduate Certificate	936	953	972	1,049	1,008
		Graduate Certificate	332	355	384	339	319
		Total	1,268	1,308	1,356	1,388	1,327
	Degree	Associate			12	33	30
		Baccalaureate	4,521	4,453	4,527	4,668	4,713
		Master's	2,295	2,309	2,280	2,138	2,137
		Doctorate - Research/Scholarship	438	461	416	419	391
		Doctorate - Professional Practice	652	626	657	621	606
		Total	7,906	7,849	7,892	7,879	7,877
	Total		9,174	9,157	9,248	9,267	9,204
Johnstown Campus	Certificate	Undergraduate Certificate	10	9	15	14	12
		Total	10	9	15	14	12
	Degree	Associate	23	27	24	21	16
		Baccalaureate	462	470	479	483	483
		Total	485	497	503	504	499
Total		495	506	518	518	511	
Greensburg Campus	Certificate	Undergraduate Certificate	1	6	11	6	11
		Total	1	6	11	6	11
	Degree	Baccalaureate	270	256	263	232	249
		Total	270	256	263	232	249
	Total		271	262	274	238	260
Titusville Campus	Degree	Associate	56	61	58	81	56
		Total	56	61	58	81	56
	Total		56	61	58	81	56
Bradford Campus	Degree	Associate	41	39	46	42	33
		Baccalaureate	247	241	242	256	212
		Total	288	280	288	298	245
Total		288	280	288	298	245	
University Total			10,284	10,266	10,386	10,402	10,276

## DEGREES AND CERTIFICATES AWARDED BY CERTIFICATE/DEGREE CATEGORY AND CAMPUS — FISCAL YEAR 2015-2019

		2015	2016	2017	2018	2019
Undergraduate Certificate	Pittsburgh Campus	936	953	972	1,049	1,008
	Johnstown Campus	10	9	15	14	12
	Greensburg Campus	1	6	11	6	11
	Total	947	968	998	1,069	1,031
Associate	Pittsburgh Campus			12	33	30
	Johnstown Campus	23	27	24	21	16
	Titusville Campus	56	61	58	81	56
	Bradford Campus	41	39	46	42	33
	Total	120	127	140	177	135
Baccalaureate	Pittsburgh Campus	4,521	4,453	4,527	4,668	4,713
	Johnstown Campus	462	470	479	483	483
	Greensburg Campus	270	256	263	232	249
	Bradford Campus	247	241	242	256	212
	Total	5,500	5,420	5,511	5,639	5,657
Graduate Certificate	Pittsburgh Campus	332	355	384	339	319
	Total	332	355	384	339	319
Master's	Pittsburgh Campus	2,295	2,309	2,280	2,138	2,137
	Total	2,295	2,309	2,280	2,138	2,137
Doctorate - Research/Scholarship	Pittsburgh Campus	438	461	416	419	391
	Total	438	461	416	419	391
Doctorate - Professional Practice	Pittsburgh Campus	652	626	657	621	606
	Total	652	626	657	621	606
Unversity Total		10,284	10,266	10,386	10,402	10,276

## DEGREES AND CERTIFICATES AWARDED BY CERTIFICATE/DEGREE CATEGORY AND SCHOOL/CAMPUS — FISCAL YEAR 2015-2019

		2015	2016	2017	2018	2019
Undergraduate Certificate	Dietrich School of Arts and Sciences <sup>1</sup>	426	410	449	437	387
	College of General Studies	151	179	192	258	228
	Swanson School of Engineering	45	42	68	97	94
	School of Social Work	3	1			
	College of Business Administration	56	67	59	93	118
	School of Dental Medicine <sup>2</sup>	40	23	10		
	School of Health and Rehabilitation Sciences	50	39	34	39	43
	University Center for International Studies	165	192	160	125	138
	Johnstown	10	9	15	14	12
	Greensburg	1	6	11	6	11
	Total	947	968	998	1,069	1,031
Associate	School of Dental Medicine <sup>2</sup>			12	33	30
	Johnstown	23	27	24	21	16
	Titusville	56	61	58	81	56
	Bradford	41	39	46	42	33
	Total	120	127	140	177	135
Baccalaureate	Dietrich School of Arts and Sciences <sup>1</sup>	2,184	2,033	2,169	2,182	2,238
	College of General Studies	278	291	287	316	314
	School of Education	101	97	95	99	109
	Swanson School of Engineering	555	590	675	732	713
	School of Social Work	50	37	42	38	41
	School of Computing and Information <sup>1</sup>	65	78	89	68	106
	College of Business Administration	650	700	602	658	640
	School of Nursing	258	249	203	214	215

## DEGREES AND CERTIFICATES AWARDED BY CERTIFICATE/DEGREE CATEGORY AND SCHOOL/CAMPUS — FISCAL YEAR 2015-2019 (continued)

		2015	2016	2017	2018	2019
Baccalaureate	School of Pharmacy	81	82	92	88	85
	School of Health and Rehabilitation Sciences	299	296	273	273	252
	Johnstown	462	470	479	483	483
	Greensburg	270	256	263	232	249
	Bradford	247	241	242	256	212
	Total	5,500	5,420	5,511	5,639	5,657
Graduate Certificate	Dietrich School of Arts and Sciences	32	23	27	24	25
	Katz Graduate School of Business					4
	School of Education	68	85	114	83	61
	Swanson School of Engineering	21	39	25	13	13
	School of Law	36	21	29	44	50
	School of Social Work	15	22	50	48	38
	School of Computing and Information	1	1		1	
	School of Dental Medicine	16	14	17	20	23
	School of Nursing	2	4	3	1	5
	Graduate School of Public Health	28	45	35	38	34
	School of Medicine	31	16	24	13	15
	School of Health and Rehabilitation Sciences	16	19	11	1	
	University Center for Social and Urban Research	8	7	5	4	5
	University Center for International Studies	58	59	44	49	46
	Total	332	355	384	339	319
Master's	Dietrich School of Arts and Sciences <sup>1</sup>	174	144	121	141	130
	Katz Graduate School of Business	377	381	404	381	319
	School of Education	326	271	289	249	240



## DEGREES AND CERTIFICATES AWARDED BY CERTIFICATE/DEGREE CATEGORY AND SCHOOL/CAMPUS — FISCAL YEAR 2015-2019 (continued)

		2015	2016	2017	2018	2019
Master's	Swanson School of Engineering	270	244	250	238	211
	School of Law	15	29	23	27	18
	Graduate School of Public and International Affairs	143	176	165	162	158
	School of Social Work	215	252	243	227	230
	School of Computing and Information <sup>1</sup>	228	236	217	178	262
	School of Dental Medicine	8	3	7	6	10
	School of Nursing	73	61	65	55	55
	School of Pharmacy	19	14	19	14	27
	Graduate School of Public Health	170	196	154	157	181
	School of Medicine	33	33	38	39	85
	School of Health and Rehabilitation Sciences	244	269	285	264	211
	Total	2,295	2,309	2,280	2,138	2,137
Doctorate - Research/Scholarship	Dietrich School of Arts and Sciences <sup>1</sup>	171	189	167	154	150
	Katz Graduate School of Business	10	5	5	12	8
	School of Education	43	42	56	39	34
	Swanson School of Engineering	68	78	63	78	77
	School of Law	1		1	3	
	Graduate School of Public and International Affairs	5	4	2	3	3
	School of Social Work	2	6	3	4	5
	School of Computing and Information <sup>1</sup>	15	15	7	13	10
	School of Dental Medicine	1		1	1	3
	School of Nursing	5	11	4	3	6
	School of Pharmacy	12	6	7	6	12
	Graduate School of Public Health	59	37	38	39	32

**DEGREES AND CERTIFICATES AWARDED BY CERTIFICATE/DEGREE CATEGORY AND SCHOOL/CAMPUS — FISCAL YEAR 2015-2019 (continued)**

		2015	2016	2017	2018	2019
Doctorate - Research/Scholarship	School of Medicine	36	50	38	42	38
	School of Health and Rehabilitation Sciences	10	18	24	22	13
	Total	438	461	416	419	391
Doctorate - Professional Practice	School of Education			38	20	47
	School of Law	196	176	138	134	120
	School of Dental Medicine	82	87	86	84	84
	School of Nursing	34	47	48	49	24
	School of Pharmacy	108	110	107	115	115
	School of Medicine	150	138	162	144	138
	School of Health and Rehabilitation Sciences	82	68	78	75	78
	Total	652	626	657	621	606
University Total	10,284	10,266	10,386	10,402	10,276	

<sup>1</sup>The School of Computing and Information (SCI) was established on July 1, 2017. Included under SCI, in this table, are data that had previously been reported under the School of Information Sciences and also under the Dietrich School of Arts and Sciences respective to that school's Department of Computer Science.

<sup>2</sup>Effective Fall 2016, the School of Dental Medicine established a major in Dental Hygiene leading to the Associate of Science degree.

## DEGREES AND CERTIFICATES AWARDED BY SCHOOL/CAMPUS AND CERTIFICATE/DEGREE CATEGORY — FISCAL YEAR 2015-2019

		2015	2016	2017	2018	2019
Dietrich School of Arts and Sciences <sup>1</sup>	Undergraduate Certificate	426	410	449	437	387
	Baccalaureate	2,184	2,033	2,169	2,182	2,238
	Graduate Certificate	32	23	27	24	25
	Master's	174	144	121	141	130
	Doctorate - Research/Scholarship	171	189	167	154	150
	Total	2,987	2,799	2,933	2,938	2,930
College of General Studies	Undergraduate Certificate	151	179	192	258	228
	Baccalaureate	278	291	287	316	314
	Total	429	470	479	574	542
Katz Graduate School of Business	Graduate Certificate					4
	Master's	377	381	404	381	319
	Doctorate - Research/Scholarship	10	5	5	12	8
	Total	387	386	409	393	331
School of Education	Baccalaureate	101	97	95	99	109
	Graduate Certificate	68	85	114	83	61
	Master's	326	271	289	249	240
	Doctorate - Research/Scholarship	43	42	56	39	34
	Doctorate - Professional Practice			38	20	47
Total	538	495	592	490	491	
Swanson School of Engineering	Undergraduate Certificate	45	42	68	97	94
	Baccalaureate	555	590	675	732	713
	Graduate Certificate	21	39	25	13	13
	Master's	270	244	250	238	211
	Doctorate - Research/Scholarship	68	78	63	78	77
	Total	959	993	1,081	1,158	1,108
School of Law	Graduate Certificate	36	21	29	44	50
	Master's	15	29	23	27	18

## DEGREES AND CERTIFICATES AWARDED BY SCHOOL/CAMPUS AND CERTIFICATE/DEGREE CATEGORY — FISCAL YEAR 2015-2019 (continued)

		2015	2016	2017	2018	2019
School of Law	Doctorate - Research/Scholarship	1		1	3	
	Doctorate - Professional Practice	196	176	138	134	120
	Total	248	226	191	208	188
Graduate School of Public and International Affairs	Master's	143	176	165	162	158
	Doctorate - Research/Scholarship	5	4	2	3	3
	Total	148	180	167	165	161
School of Social Work	Undergraduate Certificate	3	1			
	Baccalaureate	50	37	42	38	41
	Graduate Certificate	15	22	50	48	38
	Master's	215	252	243	227	230
	Doctorate - Research/Scholarship	2	6	3	4	5
	Total	285	318	338	317	314
School of Computing and Information <sup>1</sup>	Baccalaureate	65	78	89	68	106
	Graduate Certificate	1	1		1	
	Master's	228	236	217	178	262
	Doctorate - Research/Scholarship	15	15	7	13	10
	Total	309	330	313	260	378
College of Business Administration	Undergraduate Certificate	56	67	59	93	118
	Baccalaureate	650	700	602	658	640
	Total	706	767	661	751	758
School of Dental Medicine	Undergraduate Certificate <sup>2</sup>	40	23	10		
	Associate <sup>2</sup>			12	33	30
	Graduate Certificate	16	14	17	20	23
	Master's	8	3	7	6	10
	Doctorate - Research/Scholarship	1		1	1	3
	Doctorate - Professional Practice	82	87	86	84	84
	Total	147	127	133	144	150

## DEGREES AND CERTIFICATES AWARDED BY SCHOOL/CAMPUS AND CERTIFICATE/DEGREE CATEGORY — FISCAL YEAR 2015-2019 (continued)

		2015	2016	2017	2018	2019
School of Nursing	Baccalaureate	258	249	203	214	215
	Graduate Certificate	2	4	3	1	5
	Master's	73	61	65	55	55
	Doctorate - Research/Scholarship	5	11	4	3	6
	Doctorate - Professional Practice	34	47	48	49	24
	Total	372	372	323	322	305
School of Pharmacy	Baccalaureate	81	82	92	88	85
	Master's	19	14	19	14	27
	Doctorate - Research/Scholarship	12	6	7	6	12
	Doctorate - Professional Practice	108	110	107	115	115
	Total	220	212	225	223	239
Graduate School of Public Health	Graduate Certificate	28	45	35	38	34
	Master's	170	196	154	157	181
	Doctorate - Research/Scholarship	59	37	38	39	32
	Total	257	278	227	234	247
School of Medicine	Graduate Certificate	31	16	24	13	15
	Master's	33	33	38	39	85
	Doctorate - Research/Scholarship	36	50	38	42	38
	Doctorate - Professional Practice	150	138	162	144	138
	Total	250	237	262	238	276
School of Health and Rehabilitation Sciences	Undergraduate Certificate	50	39	34	39	43
	Baccalaureate	299	296	273	273	252
	Graduate Certificate	16	19	11	1	
	Master's	244	269	285	264	211
	Doctorate - Research/Scholarship	10	18	24	22	13
	Doctorate - Professional Practice	82	68	78	75	78
	Total	701	709	705	674	597

## DEGREES AND CERTIFICATES AWARDED BY SCHOOL/CAMPUS AND CERTIFICATE/DEGREE CATEGORY — FISCAL YEAR 2015-2019 (continued)

		2015	2016	2017	2018	2019
University Center for Social and Urban Research	Graduate Certificate	8	7	5	4	5
	Total	8	7	5	4	5
University Center for International Studies	Undergraduate Certificate	165	192	160	125	138
	Graduate Certificate	58	59	44	49	46
	Total	223	251	204	174	184
Johnstown	Undergraduate Certificate	10	9	15	14	12
	Associate	23	27	24	21	16
	Baccalaureate	462	470	479	483	483
	Total	495	506	518	518	511
Greensburg	Undergraduate Certificate	1	6	11	6	11
	Baccalaureate	270	256	263	232	249
	Total	271	262	274	238	260
Titusville	Associate	56	61	58	81	56
	Total	56	61	58	81	56
Bradford	Associate	41	39	46	42	33
	Baccalaureate	247	241	242	256	212
	Total	288	280	288	298	245
University Total		10,284	10,266	10,386	10,402	10,276

<sup>1</sup>The School of Computing and Information (SCI) was established on July 1, 2017. Included under SCI, in this table, are data that had previously been reported under the School of Information Sciences and also under the Dietrich School of Arts and Sciences respective to that school's Department of Computer Science.

<sup>2</sup>Effective Fall 2016, the School of Dental Medicine established a major in Dental Hygiene leading to the Associate of Science degree.

## FACULTY AND STAFF INFORMATION



**FULL-TIME AND PART-TIME EMPLOYEES BY SCHOOL AND EMPLOYEE TYPE — FALL TERM 2019**

		Faculty			Research Associates and Postdoctoral Associates			Staff			All Employees		
		Full-Time	Part-Time	Total	Full-Time	Part-Time	Total	Full-Time	Part-Time	Total	Full-Time	Part-Time	Total
Pittsburgh Campus	Dietrich School of Arts and Sciences	845	281	1,126	116	3	119	388	15	403	1,349	299	1,648
	College of General Studies		23	23				14		14	14	23	37
	Honors College							15		15	15		15
	Katz Graduate School of Business <sup>1</sup>	91	29	120	2		2	102	4	106	195	33	228
	School of Education <sup>2</sup>	128	7	135	3	1	4	117	11	128	248	19	267
	Swanson School of Engineering	183	19	202	65	2	67	118	5	123	366	26	392
	School of Law	47	9	56				45	3	48	92	12	104
	Graduate School of Public and International Affairs	28	4	32	1		1	22	3	25	51	7	58
	School of Social Work	41	65	106	2		2	136	3	139	179	68	247
	School of Computing and Information	61	55	116	3		3	41		41	105	55	160
	School of Dental Medicine	87	107	194	4		4	196	7	203	287	114	401
	School of Nursing	87	5	92	3		3	76	11	87	166	16	182
	School of Pharmacy	74	14	88	15		15	93	7	100	182	21	203
	Graduate School of Public Health	153	10	163	24		24	296	21	317	473	31	504
	School of Medicine	2,423	95	2,518	405	1	406	1,908	112	2,020	4,736	208	4,944
	School of Health and Rehabilitation Sciences	129	11	140	13		13	101	8	109	243	19	262
Other Areas <sup>3</sup>	115	14	129	39	7	46	3,725	91	3,816	3,879	112	3,991	
<b>Total</b>	<b>4,492</b>	<b>748</b>	<b>5,240</b>	<b>695</b>	<b>14</b>	<b>709</b>	<b>7,393</b>	<b>301</b>	<b>7,694</b>	<b>12,580</b>	<b>1,063</b>	<b>13,643</b>	
Regional Campuses	Johnstown	142	7	149				175	7	182	317	14	331
	Greensburg	78	18	96				104	5	109	182	23	205
	Titusville	22	8	30				28		28	50	8	58
	Bradford	76	22	98				123	8	131	199	30	229
	<b>Total</b>	<b>318</b>	<b>55</b>	<b>373</b>				<b>430</b>	<b>20</b>	<b>450</b>	<b>748</b>	<b>75</b>	<b>823</b>
<b>University Total</b>	<b>4,810</b>	<b>803</b>	<b>5,613</b>	<b>695</b>	<b>14</b>	<b>709</b>	<b>7,823</b>	<b>321</b>	<b>8,144</b>	<b>13,328</b>	<b>1,138</b>	<b>14,466</b>	

<sup>1</sup>Includes the College of Business Administration.

<sup>2</sup>Figures do not include employees in the responsibility center entitled Education - University Service Programs.

<sup>3</sup>Other Areas include the following responsibility centers: Athletics, Business and Auxiliary Services, Computing Services and Systems Development, Education - University Service Programs, Facilities Management, Human Resources, Learning Research and Development Center, Office of the Chancellor, Office of University Counsel, Public Safety and Emergency Management, Real Estate, School of Medicine Division Administration, Senior Vice Chancellor and Chief Financial Officer, Senior Vice Chancellor and Provost, Senior Vice Chancellor for Business and Operations, Senior Vice Chancellor for Engagement, Senior Vice Chancellor for Health Sciences, Senior Vice Chancellor for Philanthropic and Alumni Engagement, Senior Vice Chancellor for Research, Student Affairs, University Center for International Studies, University Center for Social and Urban Research, University Library System, and UPMC Hillman Cancer Center.

Notes: Figures include regular full-time and regular part-time employees. Not included are individuals employed on a temporary full-time or temporary part-time basis.



**FULL-TIME EMPLOYEES BY ETHNICITY AND SEX — FALL TERM 2019**

Note: In this table, international employees are reported respective to race, in accordance with U.S. Department of Labor guidelines. For counts of employees that recognize citizenship, refer to the table, “Full-Time Employees by Citizenship, Ethnicity and Gender”.

Pittsburgh Campus		Black or African American	Am. Indian or Alaskan Native	Asian	Native Hawaiian/ Other Pacific Islander	Hispanic or Latino	White	Two or More Races	Race Unknown	Total
Faculty	Male	70	1	564	4	79	1,768	13	16	2,515
	Female	69	2	340	2	72	1,466	6	20	1,977
	Total	139	3	904	6	151	3,234	19	36	4,492
Research Associates and Postdoctoral Associates	Male	5	3	183	2	27	142	1	17	380
	Female	11	2	115		31	135	6	15	315
	Total	16	5	298	2	58	277	7	32	695
Staff	Male	321	1	186	3	49	2,270	34	44	2,908
	Female	383	6	345	2	91	3,549	48	61	4,485
	Total	704	7	531	5	140	5,819	82	105	7,393
Total Employees	Male	396	5	933	9	155	4,180	48	77	5,803
	Female	463	10	800	4	194	5,150	60	96	6,777
	Total	859	15	1,733	13	349	9,330	108	173	12,580

Johnstown Campus		Black or African American	Am. Indian or Alaskan Native	Asian	Native Hawaiian/ Other Pacific Islander	Hispanic or Latino	White	Two or More Races	Race Unknown	Total
Faculty	Male	1		7		2	62		4	76
	Female			4			57		5	66
	Total	1		11		2	119		9	142
Research Associates and Postdoctoral Associates	Male									
	Female									
	Total									
Staff	Male	3		1			71		7	82
	Female	1			1		85		6	93
	Total	4		1	1		156		13	175
Total Employees	Male	4		8		2	133		11	158
	Female	1		4	1		142		11	159
	Total	5		12	1	2	275		22	317

**FULL-TIME EMPLOYEES BY ETHNICITY AND SEX — FALL TERM 2019 (continued)**

Note: In this table, international employees are reported respective to race, in accordance with U.S. Department of Labor guidelines. For counts of employees that recognize citizenship, refer to the table, “Full-Time Employees by Citizenship, Ethnicity and Gender”.

Greensburg Campus		Black or African American	Am. Indian or Alaskan Native	Asian	Native Hawaiian/ Other Pacific Islander	Hispanic or Latino	White	Two or More Races	Race Unknown	Total
Faculty	Male	2		1		1	31		1	36
	Female	1		4		3	34			42
	Total	3		5		4	65		1	78
Research Associates and Postdoctoral Associates	Male									
	Female									
	Total									
Staff	Male	2					37		2	41
	Female			1		2	59		1	63
	Total	2		1		2	96		3	104
Total Employees	Male	4		1		1	68		3	77
	Female	1		5		5	93		1	105
	Total	5		6		6	161		4	182

Titusville Campus		Black or African American	Am. Indian or Alaskan Native	Asian	Native Hawaiian/ Other Pacific Islander	Hispanic or Latino	White	Two or More Races	Race Unknown	Total
Faculty	Male			2			6			8
	Female						14			14
	Total			2			20			22
Research Associates and Postdoctoral Associates	Male									
	Female									
	Total									
Staff	Male						16			16
	Female						12			12
	Total						28			28
Total Employees	Male			2			22			24
	Female						26			26
	Total			2			48			50

**FULL-TIME EMPLOYEES BY ETHNICITY AND SEX — FALL TERM 2019 (continued)**

Note: In this table, international employees are reported respective to race, in accordance with U.S. Department of Labor guidelines. For counts of employees that recognize citizenship, refer to the table, "Full-Time Employees by Citizenship, Ethnicity and Gender".

Bradford Campus		Black or African American	Am. Indian or Alaskan Native	Asian	Native Hawaiian/ Other Pacific Islander	Hispanic or Latino	White	Two or More Races	Race Unknown	Total
Faculty	Male	5		5		1	36	1		48
	Female	1				1	26			28
	Total	6		5		2	62	1		76
Research Associates and Postdoctoral Associates	Male									
	Female									
	Total									
Staff	Male	2					50		3	55
	Female					1	66		1	68
	Total	2				1	116		4	123
Total Employees	Male	7		5		1	86	1	3	103
	Female	1				2	92		1	96
	Total	8		5		3	178	1	4	199

Total University		Black or African American	Am. Indian or Alaskan Native	Asian	Native Hawaiian/ Other Pacific Islander	Hispanic or Latino	White	Two or More Races	Race Unknown	Total
Faculty	Male	78	1	579	4	83	1,903	14	21	2,683
	Female	71	2	348	2	76	1,597	6	25	2,127
	Total	149	3	927	6	159	3,500	20	46	4,810
Research Associates and Postdoctoral Associates	Male	5	3	183	2	27	142	1	17	380
	Female	11	2	115		31	135	6	15	315
	Total	16	5	298	2	58	277	7	32	695
Staff	Male	328	1	187	3	49	2,444	34	56	3,102
	Female	384	6	346	3	94	3,771	48	69	4,721
	Total	712	7	533	6	143	6,215	82	125	7,823
Total Employees	Male	411	5	949	9	159	4,489	49	94	6,165
	Female	466	10	809	5	201	5,503	60	109	7,163
	Total	877	15	1,758	14	360	9,992	109	203	13,328

**FULL-TIME FACULTY BY SCHOOL AND ACADEMIC RANK — FALL TERM 2019**

		Professor	Associate Professor	Assistant Professor	Instructor	Lecturer	Other	Total
Pittsburgh Campus	Dietrich School of Arts and Sciences	203	158	170	79	233	2	845
	Katz Graduate School of Business <sup>1</sup>	32	21	38				91
	School of Education <sup>2</sup>	15	37	31	2		43	128
	Swanson School of Engineering	64	47	66		5	1	183
	School of Law	27	6	8			6	47
	Graduate School of Public and International Affairs	7	13	6		2		28
	School of Social Work	7	8	18		8		41
	School of Computing and Information	20	13	15		13		61
	School of Dental Medicine	13	19	46	9			87
	School of Nursing	19	13	55				87
	School of Pharmacy	20	23	27	2		2	74
	Graduate School of Public Health	42	42	67	1		1	153
	School of Medicine	567	585	1,142	102		27	2,423
	School of Health and Rehabilitation Sciences	21	35	54	19			129
Other Areas <sup>3</sup>	4	3	3	8		97	115	
<b>Total</b>	<b>1,061</b>	<b>1,023</b>	<b>1,746</b>	<b>222</b>	<b>261</b>	<b>179</b>	<b>4,492</b>	
Regional Campuses	Johnstown	16	54	44	28			142
	Greensburg	7	31	18	21		1	78
	Titusville	1	4	11	6			22
	Bradford	8	27	31	9	1		76
	<b>Total</b>	<b>32</b>	<b>116</b>	<b>104</b>	<b>64</b>	<b>1</b>	<b>1</b>	<b>318</b>
<b>University Total</b>	<b>1,093</b>	<b>1,139</b>	<b>1,850</b>	<b>286</b>	<b>262</b>	<b>180</b>	<b>4,810</b>	

<sup>1</sup>Includes the College of Business Administration.

<sup>2</sup>Figures do not include faculty in the responsibility center entitled Education-University Service Programs.

<sup>3</sup>Includes the following responsibility centers: Education - University Service Programs, Office of the Chancellor, School of Medicine Division Administration, Senior Vice Chancellor and Provost, Senior Vice Chancellor for Health Sciences, University Center for International Studies, and University Library System.

Note: Academic Rank of Other includes faculty with a primary job classification that does not correspond to a particular academic rank, such as Librarian or Teacher.

## FULL-TIME FACULTY BY SCHOOL AND TENURE STATUS — FALL TERM 2019

		Tenured		Tenure Stream		Non-Tenured and Non-Tenure Stream		Total	
		Total	% of Total	Total	% of Total	Total	% of Total	Total	% of Total
Pittsburgh Campus	Dietrich School of Arts and Sciences	345	40.8%	121	14.3%	379	44.9%	845	100.0%
	Katz Graduate School of Business <sup>1</sup>	41	45.1%	18	19.8%	32	35.2%	91	100.0%
	School of Education <sup>2</sup>	38	29.7%	10	7.8%	80	62.5%	128	100.0%
	Swanson School of Engineering	94	51.4%	31	16.9%	58	31.7%	183	100.0%
	School of Law	20	42.6%	5	10.6%	22	46.8%	47	100.0%
	Graduate School of Public and International Affairs	18	64.3%	4	14.3%	6	21.4%	28	100.0%
	School of Social Work	14	34.1%	8	19.5%	19	46.3%	41	100.0%
	School of Computing and Information	30	49.2%	6	9.8%	25	41.0%	61	100.0%
	School of Dental Medicine	9	10.3%	3	3.4%	75	86.2%	87	100.0%
	School of Nursing	19	21.8%	16	18.4%	52	59.8%	87	100.0%
	School of Pharmacy	23	31.1%	4	5.4%	47	63.5%	74	100.0%
	Graduate School of Public Health	51	33.3%	17	11.1%	85	55.6%	153	100.0%
	School of Medicine	439	18.1%	199	8.2%	1,785	73.7%	2,423	100.0%
	School of Health and Rehabilitation Sciences	20	15.5%	12	9.3%	97	75.2%	129	100.0%
Other Areas <sup>3</sup>	3	2.6%			112	97.4%	115	100.0%	
	<b>Total</b>	<b>1,164</b>	<b>25.9%</b>	<b>454</b>	<b>10.1%</b>	<b>2,874</b>	<b>64.0%</b>	<b>4,492</b>	<b>100.0%</b>
Regional Campuses	Johnstown	67	47.2%	17	12.0%	58	40.8%	142	100.0%
	Greensburg	32	41.0%	5	6.4%	41	52.6%	78	100.0%
	Titusville	5	22.7%			17	77.3%	22	100.0%
	Bradford	32	42.1%	13	17.1%	31	40.8%	76	100.0%
	<b>Total</b>	<b>136</b>	<b>42.8%</b>	<b>35</b>	<b>11.0%</b>	<b>147</b>	<b>46.2%</b>	<b>318</b>	<b>100.0%</b>
<b>University Total</b>	<b>1,300</b>	<b>27.0%</b>	<b>489</b>	<b>10.2%</b>	<b>3,021</b>	<b>62.8%</b>	<b>4,810</b>	<b>100.0%</b>	

<sup>1</sup>Includes the College of Business Administration.

<sup>2</sup>Figures do not include faculty in the responsibility center entitled Education-University Service Programs.

<sup>3</sup>Includes the following responsibility centers: Education - University Service Programs, Office of the Chancellor, School of Medicine Division Administration, Senior Vice Chancellor and Provost, Senior Vice Chancellor for Health Sciences, University Center for International Studies, and University Library System.

Note: Due to rounding, percentages shown may not add to 100%.



**FINANCIAL INFORMATION**

**CONSOLIDATED STATEMENTS OF ACTIVITIES — FISCAL YEAR 2018 TO 2020**

	2018 Actual	2019 Actual	2020 Budget
<b>OPERATING REVENUES</b>			
Tuition and Fees (net of tuition discounts of \$192.7 million, \$206.0 million, and \$239.2 million, respectively)	\$628,481	\$639,561	\$637,186
Commonwealth Appropriation	169,680	174,675	178,027
Commonwealth Construction Grants	21,582	8,781	27,130
Research Grants and Contracts	808,082	859,690	874,447
Contributions for Operations	77,638	51,047	52,837
Endowment Distributions and Investment Income	143,535	157,031	172,647
Sales and Services, Rental Revenue, and Other	427,009	462,185	443,286
<b>TOTAL OPERATING REVENUES</b>	<u>\$2,276,007</u>	<u>\$2,352,970</u>	<u>\$2,385,560</u>
<b>OPERATING EXPENSES</b>			
See inset box below for these figures expressed as functional expenses.			
Salaries and Wages	\$1,005,074	\$1,055,046	\$1,083,084
Fringe Benefits	286,230	300,091	305,950
Total Compensation	1,291,304	1,355,137	1,389,034
Supplies	112,032	122,669	123,203
Business and Professional	350,407	374,303	367,622
Facilities	95,105	103,357	104,298
Depreciation	177,210	184,835	193,360
Interest	30,171	30,137	38,070
Rent	50,083	52,507	56,283
Other	46,912	42,301	42,986
<b>TOTAL OPERATING EXPENSES</b>	<u>\$2,153,224</u>	<u>\$2,265,246</u>	<u>\$2,314,856</u>
<b>CHANGE IN NET ASSETS FROM OPERATING ACTIVITIES</b>	\$122,783	\$87,724	\$70,704
<b>OTHER ACTIVITIES<sup>1</sup></b>			
Investment Gains (Losses), net of Endowment Distributions for Operations	\$206,836	\$71,575	n/a
Contributions for Endowment	24,297	31,025	n/a
Change in Fair Value of Interest Rate Swaps	20,526	(20,765)	n/a
Deferred Tax Benefit	-	11,355	n/a
Other Components of Net Periodic Benefit Cost	(22,437)	(22,241)	n/a
Nonperiodic Changes in Benefit Plans	29,719	(46,707)	n/a
<b>TOTAL OTHER ACTIVITIES</b>	<u>\$258,941</u>	<u>\$24,242</u>	<u>n/a</u>
<b>CHANGE IN NET ASSETS</b>	\$381,724	\$111,966	\$70,704
<b>NET ASSETS, BEGINNING OF YEAR</b>	\$4,675,070	\$5,056,794	\$5,168,760
<b>NET ASSETS, END OF YEAR</b>	<u>\$5,056,794</u>	<u>\$5,168,760</u>	<u>\$5,239,464</u>

*(continued on next page)*

**CONSOLIDATED STATEMENTS OF ACTIVITIES — FUNCTIONAL EXPENSES— FISCAL YEAR 2018 TO 2019**

<b>FUNCTIONAL EXPENSES</b>	<b>2018 Actual</b>	<b>2019 Actual</b>
Based on Expenses shown above.		
Academics	\$864,441	\$884,244
Research and Related	810,699	859,248
Student Services	172,332	186,510
Auxiliary enterprises	143,711	152,660
Support Services	162,041	182,584
<b>TOTAL FUNCTIONAL EXPENSES</b>	<b>\$2,153,224</b>	<b>\$2,265,246</b>

Note: Actual and budgeted figures are for the total University and are reported in thousands. Certain 2018 operating expenses include reclassifications to conform with the 2019 and 2020 presentation.

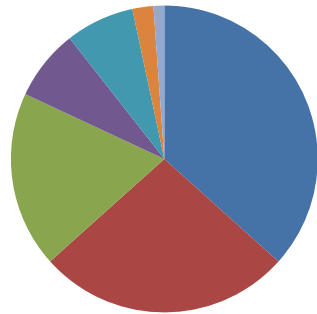
<sup>1</sup>These nonoperating activities are not included in the budget due to the inherent difficulty of projecting investment decisions, market fluctuations and changes in actuarial assumptions.

Source: Office of Budget and Financial Reporting, November 2019.



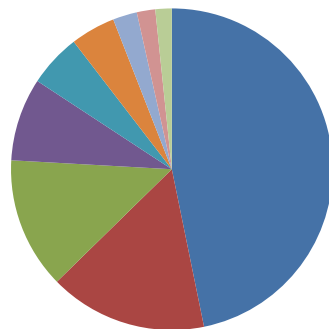
## DISTRIBUTION OF THE BUDGET — FISCAL YEAR 2020

### Revenues



- Research Grants and Contracts 36.7%
- Tuition and Fees 26.7%
- Sales and Services, Rental Revenue, and Other 18.6%
- Commonwealth Appropriation 7.5%
- Endowment Distributions and Investment Income 7.2%
- Contributions for Operations 2.2%
- Commonwealth Construction Grants 1.1%

### Expenses



- Salaries and Wages 46.8%
- Business and Professional 15.9%
- Fringe Benefits 13.2%
- Depreciation 8.4%
- Supplies 5.3%
- Facilities 4.5%
- Rent 2.4%
- Other 1.9%
- Interest 1.6%

Note: The revenue percentages are based upon budgeted Total Revenues of \$2.39 billion. The expense percentages are based upon budgeted Total Expenses of \$2.31 billion. The dollar amounts upon which these percentages are derived are displayed in the table, "Consolidated Statements of Activities - Fiscal Year 2018 to 2020".

Source: Office of Budget and Financial Reporting, November 2019.

## UNDERGRADUATE FULL-TIME TWO-TERM TUITION RATES BY PENNSYLVANIA AND OUT-OF-STATE RESIDENCY PITTSBURGH CAMPUS SCHOOLS AND REGIONAL CAMPUSES, ACADEMIC YEAR 2015-16 TO 2019-20

For specific programs, rates may vary from those displayed in this table. A comprehensive tuition rate schedule is available at the following website:

<http://ir.pitt.edu/tuition-rates-fees>.

School / Campus	2015-16	2016-17	2017-18	2018-19	2019-20
<b>Dietrich School of Arts and Sciences, College of General Studies, School of Education, and School of Social Work</b>					
Pennsylvania residents	\$17,292	\$17,688	\$18,130	\$18,130	\$18,628
Out-of-State residents	\$28,058	\$28,828	\$29,692	\$31,102	\$32,656
<b>College of Business Administration</b>					
Pennsylvania residents	\$19,314	\$19,758	\$20,250	\$20,250	\$20,806
Out-of-State residents	\$31,610	\$32,478	\$33,452	\$35,040	\$36,792
<b>Swanson School of Engineering</b>					
Pennsylvania residents	\$18,446	\$18,870	\$19,340	\$19,726	\$20,662
Out-of-State residents	\$30,660	\$31,502	\$32,446	\$34,636	\$37,060
<b>School of Computing and Information</b>					
Pennsylvania residents	\$18,626	\$19,054	\$19,530	\$19,530	\$20,456
Out-of-State residents	\$30,312	\$31,144	\$32,078	\$33,600	\$35,952
<b>School of Dental Medicine</b>					
Pennsylvania residents	\$16,800	\$17,186	\$17,614	\$17,614	\$18,098
Out-of-State residents	\$27,924	\$28,690	\$29,550	\$30,952	\$32,498
<b>School of Nursing and School of Health and Rehabilitation Sciences</b>					
Pennsylvania residents	\$21,770	\$22,270	\$22,826	\$22,826	\$23,452
Out-of-State residents	\$35,662	\$36,642	\$37,740	\$39,532	\$41,508
<b>Johnstown, Greensburg, and Bradford</b>					
Pennsylvania residents	\$12,452	\$12,688	\$12,940	\$12,940	\$13,198
Out-of-State residents	\$23,268	\$23,710	\$24,184	\$24,184	\$24,666
<b>Titusville</b>					
Pennsylvania residents	\$10,754	\$10,958	\$10,958	\$10,958	\$11,176
Out-of-State residents	\$20,316	\$20,702	\$20,702	\$20,702	\$21,116

## UNDERGRADUATE PART-TIME PER CREDIT TUITION RATES BY PENNSYLVANIA AND OUT-OF-STATE RESIDENCY PITTSBURGH CAMPUS SCHOOLS AND REGIONAL CAMPUSES, ACADEMIC YEAR 2015-16 TO 2019-20

For specific programs, rates may vary from those displayed in this table. A comprehensive tuition rate schedule is available at the following website:  
<http://ir.pitt.edu/tuition-rates-fees>.

School / Campus	2015-16	2016-17	2017-18	2018-19	2019-20
<b>Dietrich School of Arts and Sciences, College of General Studies, School of Education and School of Social Work</b>					
Pennsylvania residents	\$720	\$737	\$755	\$755	\$776
Out-of-State residents	\$1,169	\$1,201	\$1,237	\$1,295	\$1,360
<b>College of Business Administration</b>					
Pennsylvania residents	\$804	\$823	\$843	\$843	\$866
Out-of-State residents	\$1,317	\$1,353	\$1,393	\$1,460	\$1,533
<b>Swanson School of Engineering</b>					
Pennsylvania residents	\$768	\$786	\$805	\$821	\$860
Out-of-State residents	\$1,277	\$1,312	\$1,351	\$1,443	\$1,544
<b>School of Computing and Information</b>					
Pennsylvania residents	\$776	\$793	\$813	\$813	\$852
Out-of-State residents	\$1,263	\$1,297	\$1,336	\$1,400	\$1,498
<b>School of Dental Medicine</b>					
Pennsylvania residents	\$700	\$716	\$733	\$733	\$754
Out-of-State residents	\$1,163	\$1,195	\$1,231	\$1,289	\$1,354
<b>School of Nursing and School of Health and Rehabilitation Sciences</b>					
Pennsylvania residents	\$907	\$927	\$951	\$951	\$977
Out-of-State residents	\$1,485	\$1,526	\$1,572	\$1,647	\$1,729
<b>Johnstown, Greensburg, and Bradford</b>					
Pennsylvania residents	\$518	\$528	\$539	\$539	\$549
Out-of-State residents	\$969	\$987	\$1,007	\$1,007	\$1,027
<b>Titusville</b>					
Pennsylvania residents	\$448	\$456	\$456	\$456	\$465
Out-of-State residents	\$846	\$862	\$862	\$862	\$879

## GRADUATE AND DOCTORATE-PROFESSIONAL PRACTICE FULL-TIME TWO-TERM TUITION RATES BY PENNSYLVANIA AND OUT-OF-STATE RESIDENCY PITTSBURGH CAMPUS SCHOOLS, ACADEMIC YEAR 2015-16 TO 2019-20

For specific programs, rates may vary from those displayed in this table. A comprehensive tuition rate schedule is available at the following website:  
<http://ir.pitt.edu/tuition-rates-fees>.

School	2015-16	2016-17	2017-18	2018-19	2019-20
<b>Dietrich School of Arts and Sciences, School of Education, and Graduate School of Public and International Affairs</b>					
Pennsylvania residents	\$21,260	\$21,748	\$22,290	\$22,846	\$23,530
Out-of-State residents	\$34,944	\$35,904	\$36,980	\$38,736	\$39,898
<b>School of Social Work</b>					
Pennsylvania residents	\$21,260	\$21,748	\$22,290	\$22,846	\$23,530
Out-of-State residents	\$28,860	\$29,652	\$30,540	\$31,990	\$32,948
<b>Katz Graduate School of Business</b>					
Pennsylvania residents	\$28,264	\$28,914	\$29,636	\$30,376	\$31,280
Out-of-State residents	\$38,438	\$39,494	\$40,678	\$42,608	\$43,880
<b>Swanson School of Engineering</b>					
Pennsylvania residents	\$24,402	\$24,962	\$25,586	\$26,224	\$27,010
Out-of-State residents	\$40,120	\$41,222	\$42,458	\$44,474	\$45,808
<b>School of Law (not LLM)</b>					
Pennsylvania residents	\$31,586	\$32,312	\$33,118	\$33,944	\$34,962
Out-of-State residents	\$39,410	\$40,492	\$41,706	\$43,686	\$44,996
<b>School of Law (LLM)</b>					
Pennsylvania residents	\$36,500	\$37,500	\$38,500	\$39,000	\$39,000
Out-of-State residents	\$36,500	\$37,500	\$38,500	\$39,000	\$39,000
<b>School of Computing and Information</b>					
Pennsylvania residents	\$22,354	\$22,868	\$23,438	\$24,022	\$24,742
Out-of-State residents	\$36,744	\$37,754	\$38,886	\$40,732	\$41,952
<b>School of Dental Medicine</b>					
Pennsylvania residents	\$47,514	\$48,606	\$49,820	\$51,064	\$52,594
Out-of-State residents	\$56,482	\$58,034	\$59,774	\$62,612	\$64,490
<b>School of Dental Medicine (DMD)</b>					
Pennsylvania residents	\$44,214	\$45,230	\$46,360	\$47,518	\$50,368
Out-of-State residents	\$51,400	\$52,812	\$54,396	\$56,978	\$60,396
<b>School of Nursing</b>					
Pennsylvania residents	\$24,928	\$25,500	\$26,136	\$26,788	\$27,590
Out-of-State residents	\$28,860	\$29,652	\$30,540	\$31,990	\$32,948

**GRADUATE AND DOCTORATE-PROFESSIONAL PRACTICE FULL-TIME TWO-TERM TUITION RATES BY PENNSYLVANIA AND OUT-OF-STATE RESIDENCY  
PITTSBURGH CAMPUS SCHOOLS, ACADEMIC YEAR 2015-16 TO 2019-20 (continued)**

For specific programs, rates may vary from those displayed in this table. A comprehensive tuition rate schedule is available at the following website:  
<http://ir.pitt.edu/tuition-rates-fees>.

	2015-16	2016-17	2017-18	2018-19	2019-20
<b>School of Pharmacy (not PharmD)</b>					
Pennsylvania residents	\$24,928	\$25,500	\$26,136	\$26,788	\$27,590
Out-of-State residents	\$25,776	\$26,484	\$27,278	\$28,572	\$29,428
<b>School of Pharmacy (PharmD)</b>					
Pennsylvania residents	\$29,604	\$30,284	\$31,040	\$31,816	\$32,770
Out-of-State residents	\$33,002	\$33,908	\$34,924	\$36,582	\$37,678
<b>Graduate School of Public Health</b>					
Pennsylvania residents	\$24,928	\$25,500	\$26,136	\$26,788	\$27,590
Out-of-State residents	\$41,004	\$42,130	\$43,392	\$45,452	\$46,814
<b>School of Health and Rehabilitation Sciences</b>					
Pennsylvania residents	\$24,928	\$25,500	\$26,136	\$26,788	\$27,590
Out-of-State residents <sup>1</sup>	\$41,004	\$42,130	\$43,392	\$45,452	\$46,814
<b>School of Health and Rehabilitation Sciences</b>					
Pennsylvania residents	\$24,928	\$25,500	\$26,136	\$26,788	\$27,590
Out-of-State residents <sup>2</sup>	\$28,860	\$29,652	\$30,540	\$31,990	\$32,948
<b>School of Health and Rehabilitation Sciences (DPT)<sup>3</sup></b>					
Pennsylvania residents	\$38,892	\$39,786	\$40,779	\$41,796	\$43,047
Out-of-State residents	\$44,373	\$45,591	\$46,956	\$49,185	\$50,658
<b>School of Medicine (not MD)</b>					
Pennsylvania residents	\$24,026	\$25,226	\$25,932	\$26,904	\$27,710
Out-of-State residents	\$38,130	\$40,036	\$41,156	\$43,110	\$44,402
<b>School of Medicine (MD)</b>					
Pennsylvania residents	\$50,010	\$52,510	\$53,980	\$56,004	\$57,684
Out-of-State residents	\$51,464	\$54,036	\$55,548	\$58,186	\$59,930

<sup>1</sup>All School of Health and Rehabilitation Science programs except those referenced in footnote 2.

<sup>2</sup>Rates applicable to specific School of Health and Rehabilitation Science programs. See website for specific programs: <http://ir.pitt.edu/graduate-tuition/>.

<sup>3</sup>Rates shown for this program are for three (not two) terms.

## GRADUATE PART-TIME PER CREDIT TUITION RATES BY PENNSYLVANIA AND OUT-OF-STATE RESIDENCY PITTSBURGH CAMPUS SCHOOLS, ACADEMIC YEAR 2015-16 TO 2019-20

For specific programs, rates may vary from those displayed in this table. A comprehensive tuition rate schedule is available at the following website:  
<http://ir.pitt.edu/tuition-rates-fees>.

Doctorate - Professional Practice figures are not shown as various rates apply, such as fractional full-time rates and per credit rates for courses that are outside the curriculum.

School	2015-16	2016-17	2017-18	2018-19	2019-20
<b>Dietrich School of Arts and Sciences, School of Education, and Graduate School of Public and International Affairs</b>					
Pennsylvania residents	\$858	\$877	\$898	\$920	\$947
Out-of-State residents	\$1,429	\$1,468	\$1,512	\$1,583	\$1,630
<b>School of Social Work</b>					
Pennsylvania residents	\$858	\$877	\$898	\$920	\$947
Out-of-State residents	\$1,179	\$1,211	\$1,247	\$1,306	\$1,345
<b>Katz Graduate School of Business</b>					
Pennsylvania residents	\$1,218	\$1,246	\$1,277	\$1,308	\$1,347
Out-of-State residents	\$1,827	\$1,877	\$1,933	\$2,024	\$2,084
<b>Swanson School of Engineering</b>					
Pennsylvania residents	\$1,158	\$1,184	\$1,213	\$1,243	\$1,280
Out-of-State residents	\$1,898	\$1,950	\$2,008	\$2,103	\$2,166
<b>School of Law</b>					
Pennsylvania residents	\$1,192	\$1,219	\$1,249	\$1,280	\$1,318
Out-of-State residents	\$1,728	\$1,775	\$1,828	\$1,914	\$1,971
<b>School of Computing and Information</b>					
Pennsylvania residents	\$911	\$931	\$954	\$977	\$1,006
Out-of-State residents	\$1,512	\$1,553	\$1,599	\$1,674	\$1,724
<b>School of Dental Medicine</b>					
Pennsylvania residents	\$1,962	\$2,007	\$2,057	\$2,108	\$2,171
Out-of-State residents	\$2,340	\$2,404	\$2,476	\$2,593	\$2,670
<b>School of Nursing</b>					
Pennsylvania residents	\$1,016	\$1,039	\$1,064	\$1,090	\$1,122
Out-of-State residents	\$1,179	\$1,211	\$1,247	\$1,306	\$1,345
<b>School of Pharmacy</b>					
Pennsylvania residents	\$1,016	\$1,039	\$1,064	\$1,090	\$1,122
Out-of-State residents	\$1,053	\$1,081	\$1,113	\$1,165	\$1,199
<b>Graduate School of Public Health and School of Health and Rehabilitation Sciences (except for specific programs)</b>					
Pennsylvania residents	\$1,016	\$1,039	\$1,064	\$1,090	\$1,122
Out-of-State residents	\$1,680	\$1,726	\$1,777	\$1,861	\$1,916
<b>School of Medicine</b>					
Pennsylvania residents	\$978	\$1,026	\$1,054	\$1,093	\$1,125
Out-of-State residents	\$1,563	\$1,641	\$1,686	\$1,766	\$1,818

## RESEARCH INFORMATION



## SPONSORED RESEARCH AND OTHER SPONSORED PROGRAMS EXPENSES BY SCHOOL AND OTHER AREA OR PROGRAM — FISCAL YEAR 2019

School	Sponsored Research	Other Sponsored Programs	Total
School of Medicine	\$365,153	\$53,336	\$418,489
Graduate School of Public Health	50,103	11,263	61,366
Dietrich School of Arts and Sciences	47,372	6,499	53,871
Swanson School of Engineering	31,271	2,379	33,650
School of Social Work	270	25,684	25,954
School of Health and Rehabilitation Sciences	14,745	2,949	17,694
School of Education	3,239	14,099	17,338
School of Pharmacy	9,335	3,290	12,625
School of Dental Medicine	9,188	588	9,776
School of Nursing	6,876	1,831	8,707
School of Computing and Information	5,072	449	5,521
University Center for International Studies	128	2,424	2,552
Katz Graduate School of Business	1,058	1	1,059
Graduate School of Public and International Affairs	220	532	752
Greensburg Campus	1	688	689
School of Law	0	410	410
Bradford Campus	0	265	265
Johnstown Campus	0	83	83
<b>Other Area or Program</b>			
Western Psychiatric Institute and Clinic	66,383	11,446	77,829
University of Pittsburgh Cancer Institute	54,303	7,745	62,048
School of Medicine Division Administration	24,466	6,291	30,757
Learning Research and Development Center	3,797	2,246	6,043
Senior Vice Chancellor Research	1,940	2,138	4,078
Office of the Senior Vice Chancellor, Health Sciences	29	2,789	2,818
College Work Study Program	0	2,741	2,741
Supplemental Educational Opportunity Grant Program	0	1,573	1,573
Pennsylvania Higher Education Assistance Agency (PHEAA)	0	348	348
Chancellor	0	259	259
Student Affairs	0	193	193
Libraries	0	103	103
Pell Grant Program	0	26	26
Vice Chancellor Human Resources	0	23	23
Education - University Service Programs	0	12	12
Computing Services and Systems Development	9	0	9
Office of the Provost	0	2	2
<b>Total Expenses by School, Other Area or Program</b>	<b>\$694,958</b>	<b>\$164,705</b>	<b>\$859,663</b>
Financial Statement Adjustments			\$27
<b>Total Expenses per the Financial Statements</b>			<b>\$859,690</b>

Notes: Figures are for the total University and are reported in thousands.

Sponsored Research, as referenced in this table, comprises both the direct costs attributable to the "Research" expense category and the indirect costs attributed to other expense categories. The direct cost portion and institutionally-funded (i.e., non-sponsored) research expenses (the latter not shown in this table) comprise the amount shown for the functional expense category "Research" for FY 2019. These data appear in the *Fact Book* table, *Consolidated Statements of Revenues, Expenses, and Changes in Net Assets, Fiscal Year 2018 to 2020*.

Source: Office of Research and Cost Accounting, October 2019.



### SPONSORED RESEARCH AND OTHER SPONSORED PROGRAMS EXPENSES BY SPONSOR — FISCAL YEAR 2019

	<u>Sponsored Research</u>	<u>Other Sponsored Programs</u>	<u>Total</u>
Federal			
National Institutes of Health	\$461,318	\$40,939	\$502,257
Department of the Army	30,686	17	30,703
National Science Foundation	21,993	2,780	24,773
Department of Education	836	7,346	8,182
Centers for Disease Control and Prevention	7,205	253	7,458
Health Resources and Services Administration	280	6,883	7,163
Department of Veterans Affairs	2,814	3,020	5,834
Department of Energy	5,239	96	5,335
Administration for Community Living	4,652	428	5,080
Administration for Children and Families	0	4,344	4,344
Department of the Navy	4,343	0	4,343
Agency for Healthcare Research and Quality	1,472	1,308	2,780
Defense Threat Reduction Agency	2,590	0	2,590
Substance Abuse and Mental Health Services Administration	0	1,484	1,484
Other	3,470	1,174	4,644
Pass Through Funding	<u>77,358</u>	<u>39,426</u>	<u>116,784</u>
<b>Total Federal</b>	<b>624,256</b>	<b>109,498</b>	<b>733,754</b>
Companies and Foundations	32,073	31,445	63,518
State and Local Governments	6,141	11,169	17,310
Other Agencies and Institutions	<u>32,488</u>	<u>12,593</u>	<u>45,081</u>
<b>Total Expenses by Sponsor</b>	<b><u>\$694,958</u></b>	<b><u>\$164,705</u></b>	<b><u>\$859,663</u></b>
Financial Statement Adjustments			\$27
<b>Total Expenses per the Financial Statements</b>			<b><u>\$859,690</u></b>

Notes: Figures are for the total University and are reported in thousands.

Sponsored Research, as referenced in this table, comprises both the direct costs attributable to the "Research" expense category and the indirect costs attributed to other expense categories. The direct cost portion and institutionally-funded (i.e., non-sponsored) research expenses (the latter not shown in this table) comprise the amount shown for the functional expenses category "Research" for FY 2019. These data appear in the *Fact Book* table, *Consolidated Statements of Revenues, Expenses, and Changes in Net Assets, Fiscal Year 2018 to 2020*.

Source: Office of Research and Cost Accounting, October 2019.

## LIBRARY COLLECTIONS AND SERVICES



### LIBRARY COLLECTIONS FISCAL YEAR 2017, 2018, AND 2019

	2017	2018	2019
<b>University Library System<sup>1</sup></b>			
Titles Held - all formats	4,836,017	4,863,957	4,932,247
Volumes Held - print and electronic <sup>2</sup>	6,585,808	5,552,228	5,540,911
E-books <sup>3</sup>	1,305,441	1,443,764	1,473,209
<b>Health Sciences Library System</b>			
Titles Held - all formats	95,441	95,866	96,772
Volumes Held - print and electronic <sup>2</sup>	135,858	133,616	130,505
E-books <sup>3</sup>	5,303	4,645	5,034
<b>Law Library</b>			
Titles Held - all formats	507,706	548,716	567,916
Volumes Held - print and electronic <sup>2</sup>	167,094	432,846	452,150
E-books <sup>3</sup>	1	272,846	290,493
<hr/>			
<b>University Total</b>			
Titles Held - all formats	5,439,164	5,508,539	5,596,935
Volumes Held - print and electronic <sup>2</sup>	6,888,760	6,118,690	6,123,566
E-books <sup>3</sup>	1,310,745	1,721,255	1,768,736

<sup>1</sup>The University Library System includes the Archives Service Center, African American Collection, Buhl Social Work Collection, Center for American Music, Chemistry Library, Bevier Engineering Library, East Asian Collection, Frick Fine Arts Library, Hillman Library, Langley Library, Music Library, Special Collections, Library Collections Storage Unit, and the libraries located at the regional campuses of Bradford, Greensburg, Johnstown, and Titusville.

<sup>2</sup>The FY 2018 University Library Services volumes number is calculated using updated methodology to better reflect Association of Research Library definitions.

<sup>3</sup>Subset of "Volumes Held - print and electronic".

<sup>4</sup>The FY 2018 Law Library e-book count totals now include e-books leased via database packages.

Source: University Library System, November 2019.

### LIBRARY SERVICES FISCAL YEAR 2017, 2018, AND 2019

	<u>University Library System<sup>1</sup></u>			<u>Health Sciences Library System</u>			<u>Law Library</u>			<u>University Total</u>		
	2017	2018	2019	2017	2018	2019	2017	2018	2019	2017	2018	2019
Circulation Transactions <sup>2</sup>	81,654	72,872	68,865	2,907	2,340	2,077	1,297	1,297	1,194	85,858	76,509	72,136
Interlibrary Loans - Total	39,197	37,940	38,926	14,558	16,728	16,346	240	262	262	53,995	54,930	55,534
Interlibrary Loans (provided to)	21,513	21,808	22,921	13,450	13,207	11,977	161	195	304	35,124	35,210	35,202
Interlibrary Loans (received from)	17,684	16,132	16,005	1,108	3,521	4,369	79	67	47	18,871	19,720	20,332
Reference Transactions	38,524	34,303	34,711	12,666	12,592	12,616	1,244	1,250	1,130	52,434	48,145	48,457
Library Instruction Sessions	994	868	944	366	258	262	77	84	99	1,437	1,210	1,305
Number of Participants in Instruction Sessions	20,710	18,384	19,715	4,924	4,223	5,069	1,869	1,902	306	27,503	24,509	25,090
Visitors (Gate Counts) <sup>3</sup>	1,907,512	1,737,598	1,698,072	229,060	208,030	194,191	--	--	--	2,136,572	1,945,628	1,892,263
Digital Services – All Libraries												
Number of Regular Searches in Databases										4,834,860	4,962,497	4,314,549
Number of Full Text Article Downloads										5,585,713	5,455,214	5,650,831

<sup>1</sup>The University Library System includes the Archives Service Center, African American Collection, Buhl Social Work Collection, Center for American Music, Chemistry Library, Bevier Engineering Library, East Asian Collection, Frick Fine Arts Library, Hillman Library, Langley Library, Music Library, Special Collections, Library Collections Storage Unit, and the libraries located at the regional campuses of Bradford, Greensburg, Johnstown, and Titusville.

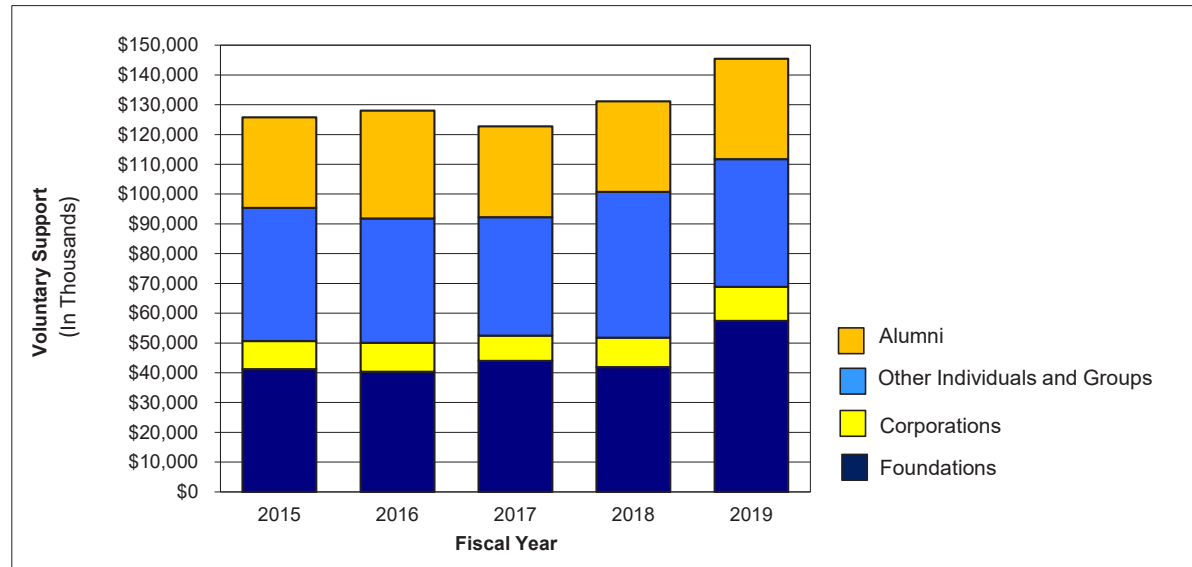
<sup>2</sup>Beginning FY 2017, Circulation Transactions exclude circulation of equipment.

<sup>3</sup>The Law Library does not record gate counts.

Source: University Library System, November 2019.

## PHILANTHROPIC & ALUMNI ENGAGEMENT

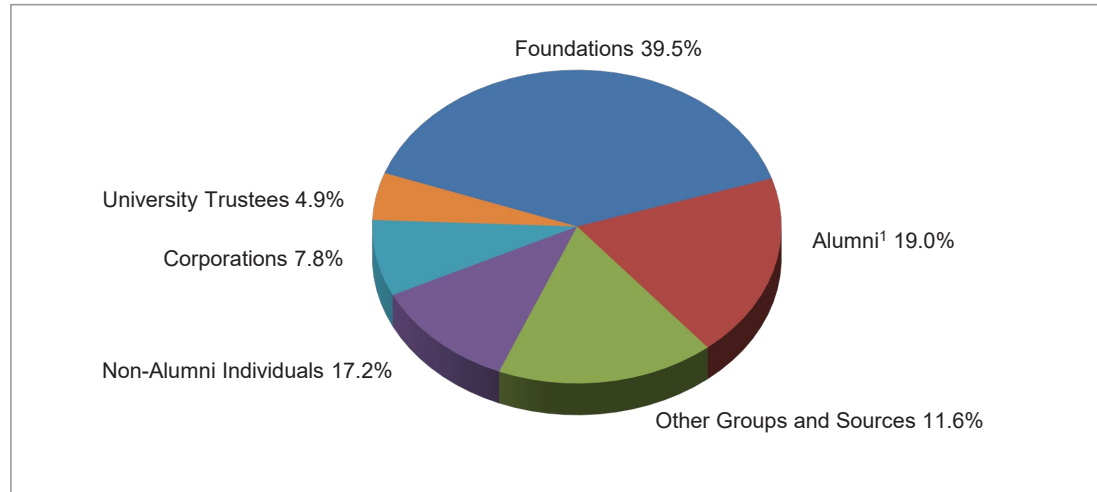


**VOLUNTARY SUPPORT BY SOURCE OF GIVING — FISCAL YEAR 2015 TO 2019**


Fiscal Year	Alumni	Other Individuals and Groups	Corporations	Foundations	Voluntary Support All Sources
2015	\$30,408,640	\$44,739,390	\$9,391,961	\$41,256,179	\$125,796,170
2016	36,235,042	41,790,615	9,696,506	40,315,346	128,037,509
2017	30,437,790	39,793,366	8,482,879	43,989,144	122,703,179
2018	30,355,895	49,018,298	9,809,893	41,936,373	131,120,459
2019	33,677,677	42,914,036	11,441,810	57,417,088	145,450,611

Note: Voluntary Support figures shown in this table are point-in-time, and as such, serve only as a reference point. Other presentations of these data may take into account changes in donor specifications and various other developments.

Source: Philanthropic & Alumni Engagement, October 2019.

**VOLUNTARY SUPPORT BY SUPPORT CATEGORY — FISCAL YEAR 2019**


Support Category	Voluntary Support
Foundations	\$57,417,088
Alumni <sup>1</sup>	27,613,338
Non-Alumni Individuals	25,014,498
Other Groups and Sources	16,843,904
Corporations	11,441,810
University Trustees	7,119,973
<b>Support Category Total</b>	<b>\$145,450,611</b>

<sup>1</sup>University of Pittsburgh alumni who serve as members of the University Board of Trustees are included under the support category designated as *University Trustees*.

Note: Voluntary Support figures shown in this table are point-in-time, and as such, serve only as a reference point. Other presentations of these data may take into account changes in donor specifications and various other developments.

Source: Philanthropic & Alumni Engagement, October 2019.