

Builderscrack | DATA

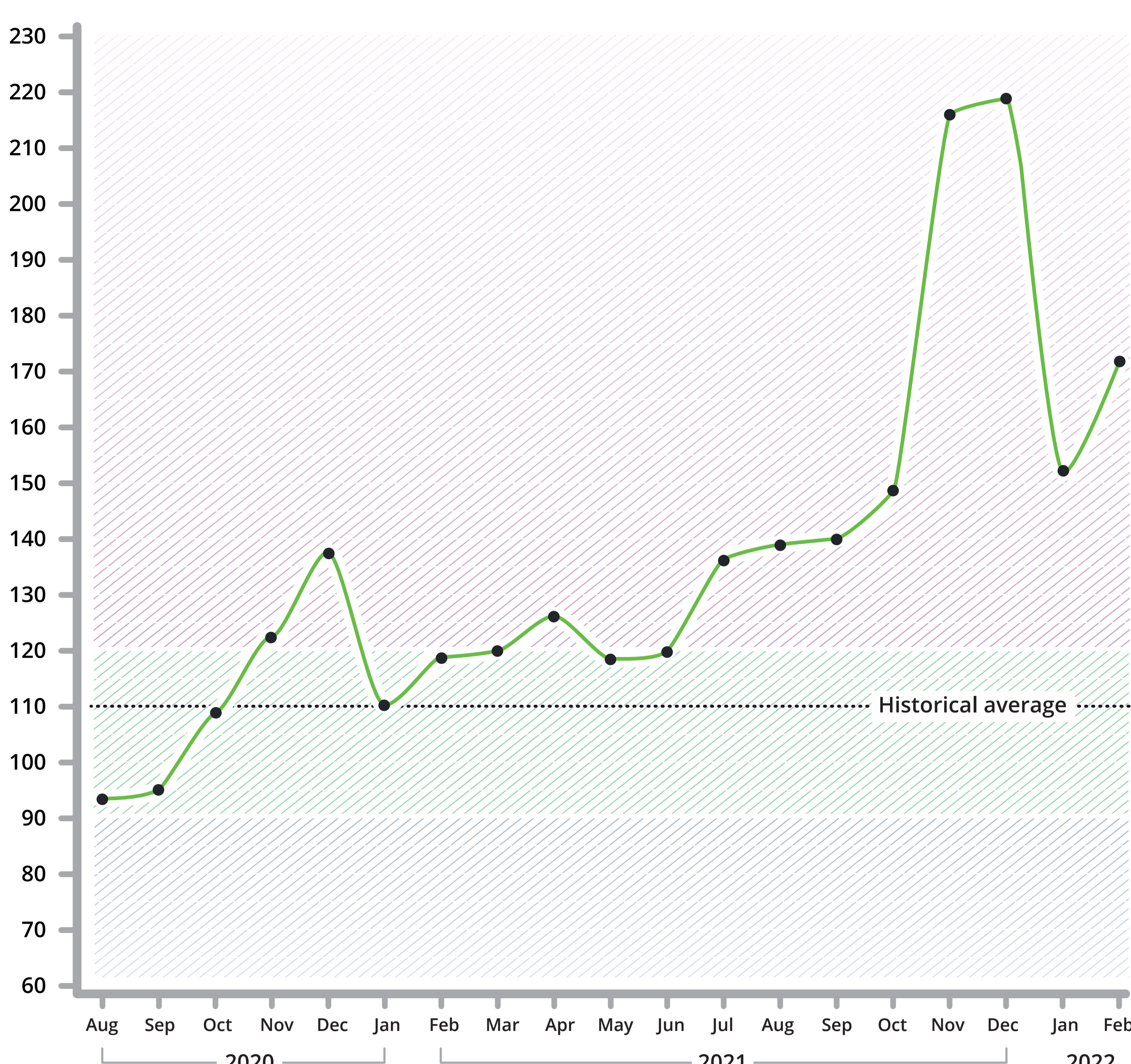
# Trade Demand Index

We're expecting trade demand to stabilise, with most commentators predicting a soft landing after a fall in house prices over the coming year.

We've seen an uptick in demand through February into March, after the usual warming up period in January. Our 13 years of history shows a complex relationship between house prices and demand for trades, with a long tail of trade demand after a house price surge. Balanced with this are the high number of unusual global and local conditions presently at play.

**About this index:**

Our Trade Demand Index aggregates a variety of Builderscrack data-points into a representative measure of demand on the trades sector.



Builderscrack | DATA

# Movers and Shakers:

## Top 20 Trades

Cladding jobs continue to press supply in this area, with a resurgence in demand for Bricklayers too. Expect jobs starting to tilt towards the seasonal trend of interior renovations in the coming months.

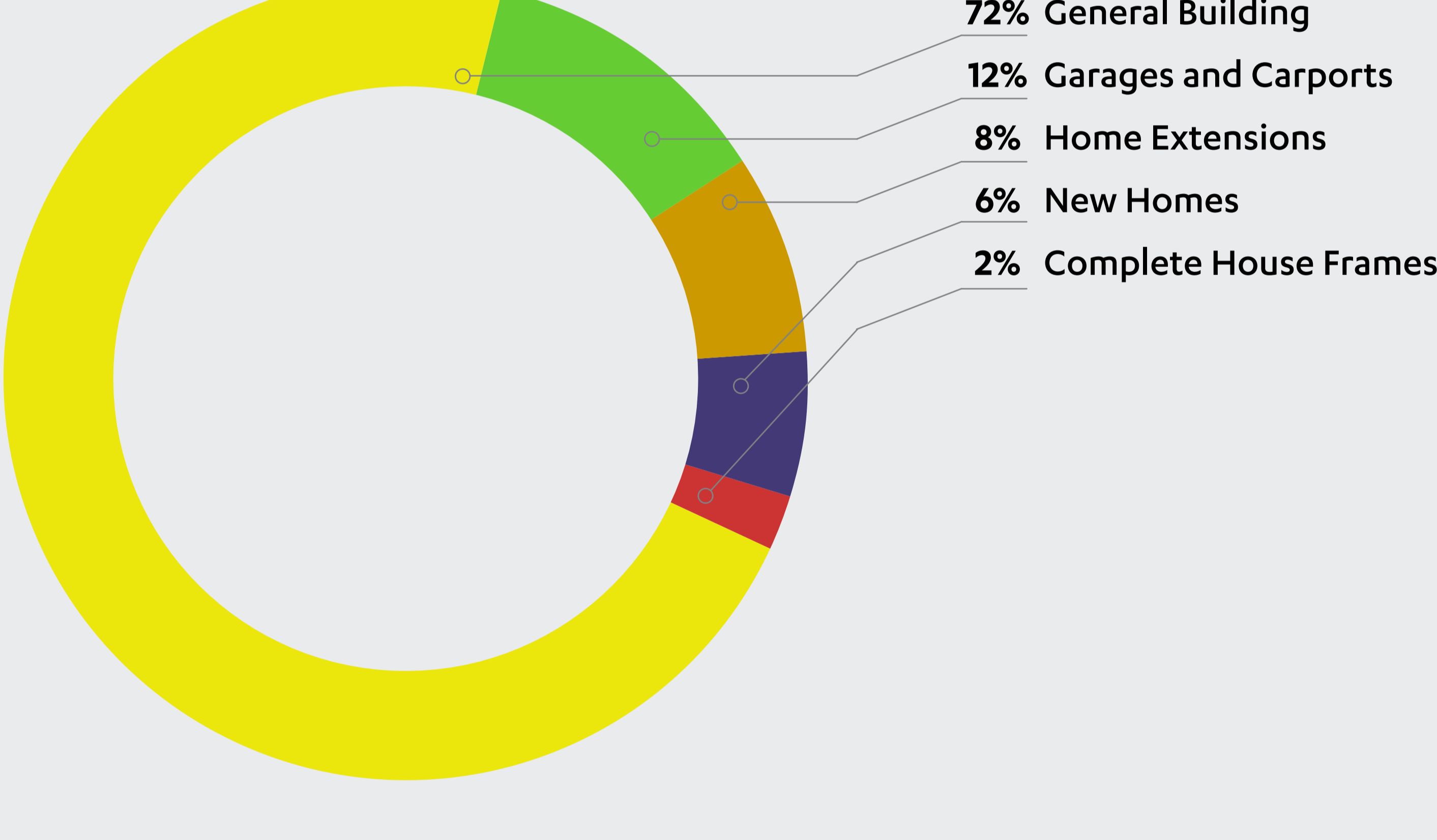
Trade Position	Change	Trade Position	Change
1 Cladding	-	11 Building	▼ 3
2 Bricklaying	▲ 2	12 Gardening	▼ 1
3 Cabinetry	▼ 1	13 Landscaping	▼ 4
4 Flooring	▼ 1	14 Tiling	▲ 1
5 Roofing	-	15 Fencing & Gates	▼ 1
6 Handymen	-	16 Plumbing	▲ 1
7 Gasfitting	-	17 Plastering	▼ 1
8 Renovating	▲ 2	18 Excavation	-
9 Carpentry	▲ 4	19 Painting & Decorating	-
10 Concreting & Paving	▲ 2	20 Electricians	-

(Source: builderscrack.co.nz)

Builderscrack | DATA

# Trade Spotlight: [ Building ]

Homeowners have been looking to keep on top of General Building repairs and maintenance, with that category making up a large portion of jobs this past month. A number of homeowners have been seeking Builders to do work that's a little more creative and a little more conservative; such as repurposing existing rooms and garages to fit new lifestyle requirements.



(Source: builderscrack.co.nz)

Builderscrack | DATA

# Building Insights

These were some of the top trending words in Building job descriptions from the past month.



(Source: builderscrack.co.nz)

Builderscrack | DATA

# 5 Most Common Concerns Tradies Have In The Workplace

A Tradie Wellbeing Survey shows that in the four months leading up to January 2022, the five most common issues of concern were:

- 1 High workload (37%)
- 2 COVID-19 protocols (31%)
- 3 Pressures from delays (30%)
- 4 Reduced social interaction (20%)
- 5 Worry about catching COVID-19 on the job (20%)

(Source: MATES in Construction New Zealand: Industry Wellbeing Environmental Scan and Survey; OzHelp Foundation: National Tradie Wellbeing Survey Results January 2022)



If you have a workmate who is finding it tough to cope, help is always available through the MATES in Construction website or phone 0800 111 315.

# Key Takeaways

- A long tail of trade demand usually follows a house price surge
- Job trends show homeowners getting necessary work done
- Find useful resources and info at MATES in Construction

All content is for information only. Due to the continuation of real-time data, results may vary month to month. Builderscrack does not guarantee the accuracy of the content provided or accept any liability or responsibility for the material and in how it may be interpreted or used.