

# C.I.P.

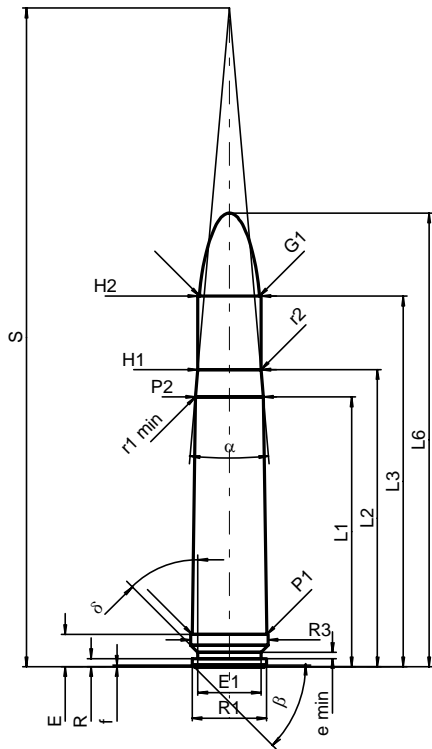
## 465 H&H Belt. Mag.

Country of Origin: GB

TAB. III

Date 06-09-19

Revision



### CARTRIDGE MAXI

#### Lengths

L1	=	53.50
L2	=	58.93
L3 <sup>1)</sup>	=	73.50
L4	=	
L5	=	
L6	=	90.00

#### Case Head

R	=	1.60
R1	=	14.71
R3	=	15.33
E <sup>1)</sup>	=	6.40
E1	=	12.57
e min	=	1.24
delta	=	45°
f	=	0.30
beta	=	45°

#### Powder Chamber

P1 <sup>1)</sup>	=	14.78
P2 *	=	13.50

#### Junction Cone

alpha *	=	9°59'55"
S *	=	130.66
r1 min	=	0.50
r2	=	0.50

#### Collar

H1 *	=	12.55
H2 <sup>1)</sup>	=	12.55

#### Projectile

G1 <sup>1)*</sup>	=	11.89
G2	=	
F	=	
L3+G <sup>1)</sup>	=	83.27

#### Pressures (Energies)

##### Method Transducer

Pmax	=	4300 bar
PK	=	4945 bar
PE	=	5375 bar
M	=	25.00
EE	=	8300 Joule

#### Miscellaneous Dimensions

Fe <sup>1)</sup>	=	0.10
delta L	=	

### CHAMBER MINI

#### Lengths

L1	=	53.28
L2	=	58.65
L3 <sup>1)</sup>	=	73.80

#### Breech

R	=	1.60
R1	=	15.39
R2	=	
R3	=	15.39
r	=	

#### Powder Chamber

E <sup>1)</sup>	=	6.43
P1 <sup>1)</sup>	=	14.81
P2 *	=	13.53

#### Junction Cone

alpha *	=	10°00'14"
S *	=	130.57
r1 max	=	0.50
r2	=	0.50

#### Collar

H1 *	=	12.59
H2 <sup>1)</sup>	=	12.58

#### Commencement of Rifling

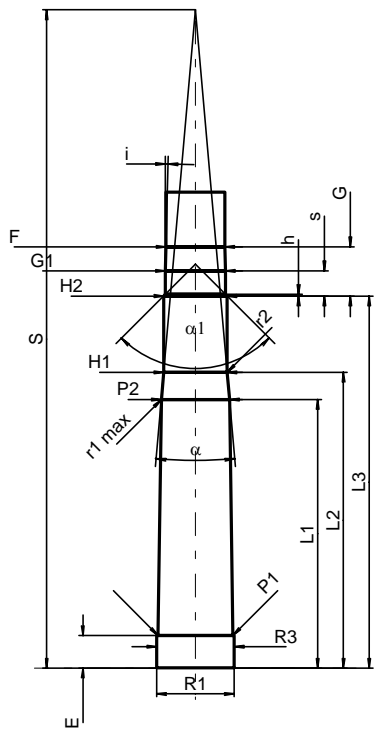
G1 <sup>1)*</sup>	=	11.90
G <sup>1)</sup>	=	9.77
alpha 1	=	90°
h	=	0.34
s *	=	5.00
i <sup>1)*</sup>	=	1°26'28"
w	=	

#### Barrel

F <sup>1)*</sup>	=	11.66
Z <sup>1)</sup>	=	11.89

#### Grooves

b	=	3.25
N	=	8
u	=	356.00
Q	=	109.81 mm <sup>2</sup>



Scale 1:1.5

Dimensions in << mm >>  
Dimensions and Tolerances for Proof Barrels  
see Appendix CR 1.

Notes: 1) Check for safety reasons  
\* Basic dimensions