

# C.I.P.

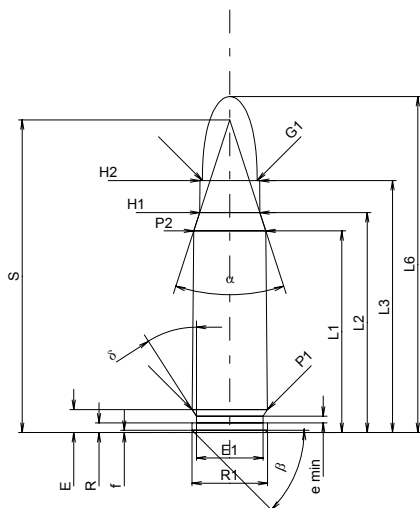
## 7 x 33 Sako

Country of Origin: FI

TAB. I

Date 95-03-09

Revision 02-05-15



### CARTRIDGE MAXI

#### Lengths

L1 <sup>1)</sup> *	=	26.68	-0.20
L2 <sup>1)</sup> *	=	29.10	-0.20
L3 <sup>1)</sup>	=	33.33	
L4	=		
L5	=		
L6	=	44.44	

#### Case Head

R	=	1.27	
R1	=	10.00	
R3	=		
E	=	3.05	
E1	=	8.80	
e min	=	0.90	
delta	=	32°42'	
f	=	0.30	
beta	=	45°	

#### Powder Chamber

P1	=	9.93	
P2 <sup>1)</sup> *	=	9.52	-0.20

#### Junction Cone

alpha	=	35°56'39"	
S	=	41.35	
r1 min	=		
r2	=		

#### Collar

H1 <sup>1)</sup> *	=	7.95	
H2	=	7.90	

#### Projectile

G1 <sup>1)</sup>	=	7.26	
G2	=		
F	=		
L3+G <sup>1)</sup>	=	41.40	

#### Pressures (Energies)

##### Method Transducer

Pmax	=	2800 bar	
PK	=	3220 bar	
PE	=	3500 bar	
M	=	17.50	
EE	=	1715 Joule	

#### Miscellaneous Dimensions

Fe <sup>1)</sup>	=	0.15	
delta L	=		

### CHAMBER MINI

#### Lengths

L1 *	=	26.54	
L2 *	=	29.03	
L3 <sup>1)</sup>	=	33.94	

#### Breech

R	=	1.27	
R1	=	10.05	
R2	=		
R3	=		
r	=		

#### Powder Chamber

E	=	3.04	
P1 <sup>1)</sup>	=	9.98	
P2 *	=	9.55	

#### Junction Cone

alpha <sup>1)</sup>	=	34°59'45"	
S	=	41.69	
r1 max	=		
r2	=		

#### Collar

H1 *	=	7.98	
H2 <sup>1)</sup>	=	7.93	

#### Commencement of Rifling

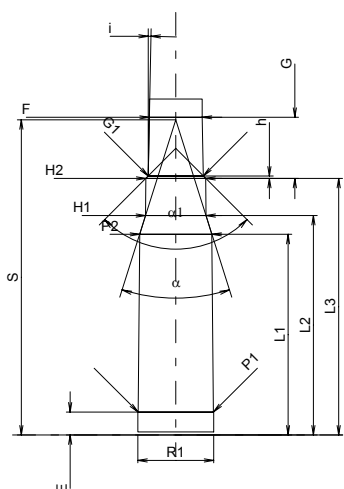
G1 <sup>1)</sup> *	=	7.29	
G <sup>1)</sup> *	=	8.07	
alpha1	=	90°	
h *	=	0.32	
s	=		
i <sup>1)</sup>	=	1°08'44"	
w	=		

#### Barrel

F <sup>1)</sup> *	=	6.98	
Z <sup>1)</sup>	=	7.23	

#### Grooves

b	=	3.60	
N	=	4	
u	=	401.00	
Q	=	40.15	mm <sup>2</sup>



Scale 1:1

Dimensions in << mm >>  
Dimensions and Tolerances for Proof Barrels  
see Appendix CR 1.

Notes: 1) Check for safety reasons  
\* Basic dimensions