

ALL ABOARD!

Illustration and poem by Nahum Gutman, 1931

Break out your markers and color in the image!



HOW MANY?

Look closely at the image and count how many of each item appears



Dreidels



Flags



Hebrew Words



Fish



Types of transportation



This illustration was published at a time when many Jews were leaving their homes in Europe amid rising antisemitism. **Where do you think the image is inviting them to travel to?**



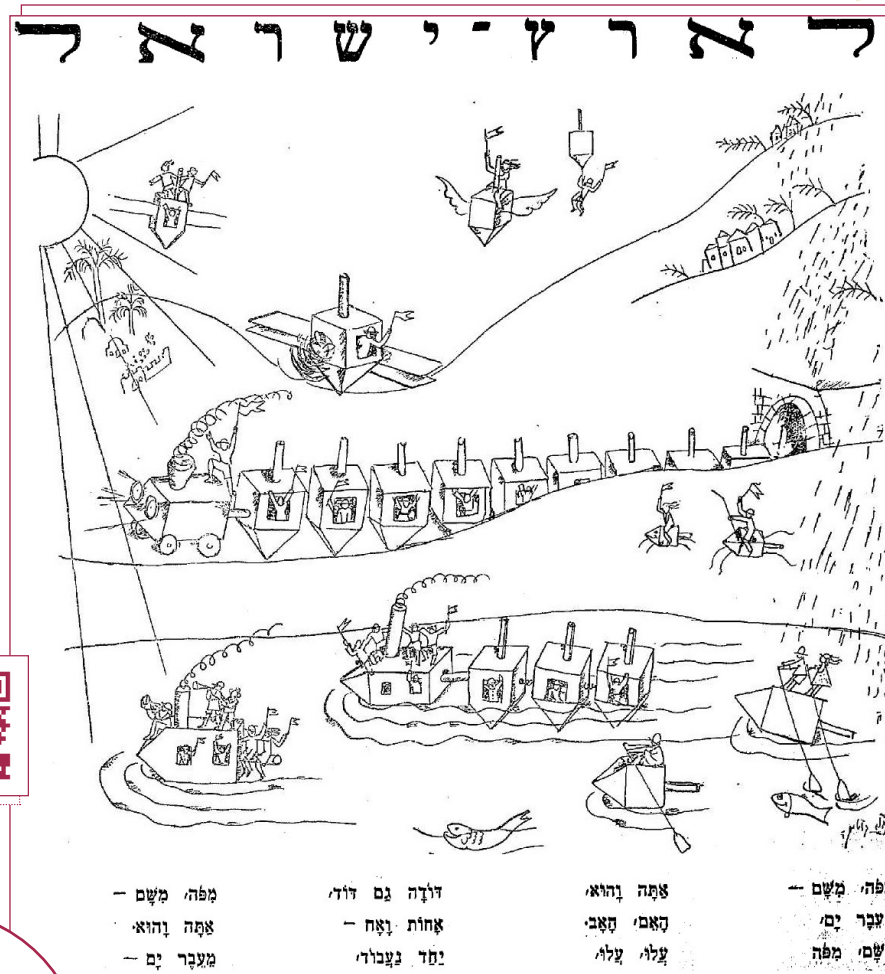
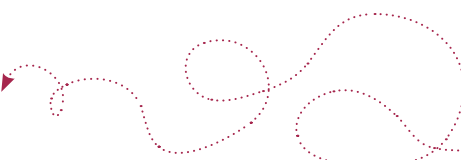
Help the dreidel go from **שם** (*sham* – there, outside of Israel) to **פה** (*po* – here, Israel)

Discover the origins of the dreidel game! →



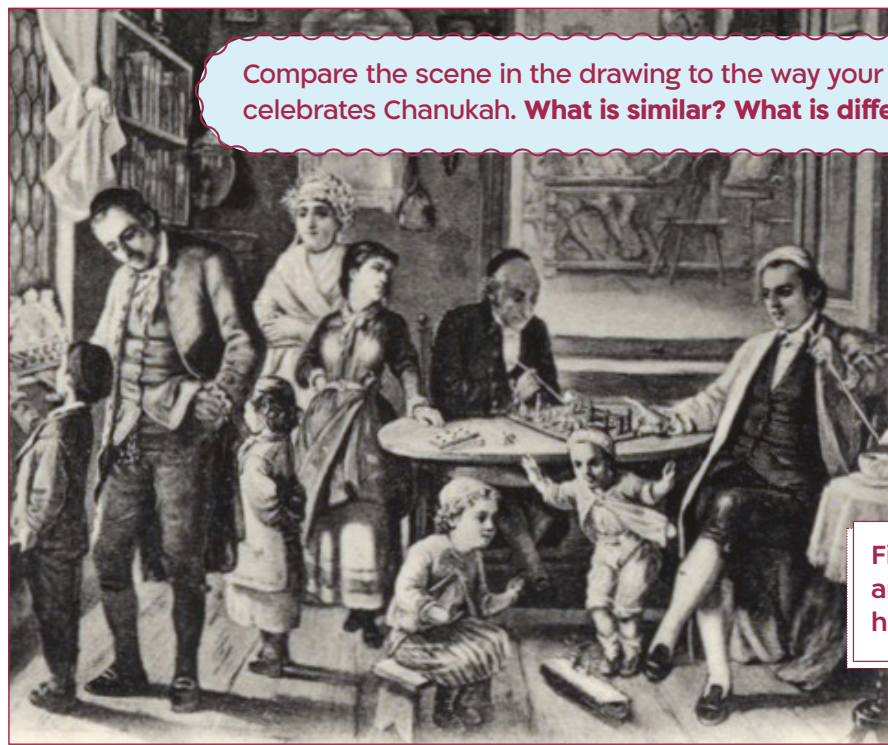
פה

שם



FAMILY TIME

Postcard by painter Moritz Oppenheim depicting German Jewish life in the 1800s



Compare the scene in the drawing to the way your family celebrates Chanukah. **What is similar? What is different?**

Find the answers here →



List 4 activities that are taking place in the drawing

- 1
- 2
- 3
- 4



Draw a picture of your family's Chanukah celebration



PUZZLED PICTURE

Emblem of the State of Israel, 1948

Did you know that Israel's official emblem is connected to Chanukah? It depicts a seven-branched menorah in between two vertical olive branches. Olives were the source of the oil that was used to light the menorah in the temple. Beneath the menorah is the word Israel written in Hebrew: ישראל.

THIS POSTER IS ALL MIXED UP!



Can you put the pieces back in their correct order?

Peek here for the answer →

