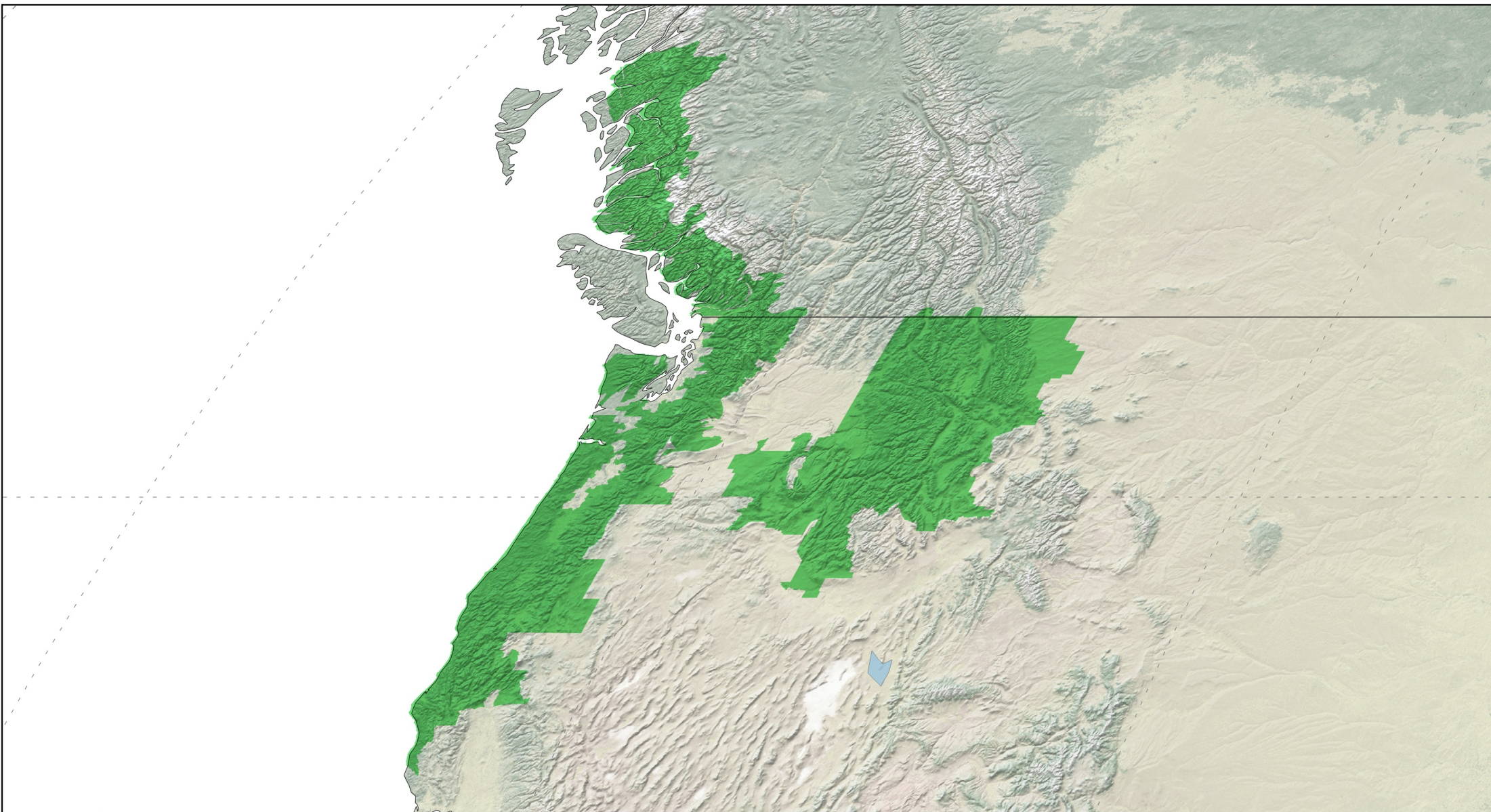


# FAMILY ASCAPHIDAE



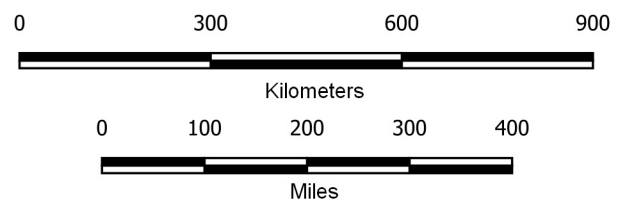
**Mapped by AmphibiaWeb,  
December 2020**

2 species ranges showing, with  
overlapping areas increasing in  
darkness.

*Graticules at 30 degrees on world range,  
and 15 degrees on inset.*

Projection is World Robinson, WGS84  
(EPSG: 54030)

Data Sources: Natural Earth, AmphibiaWeb,  
IUCN Red List



*Disclaimer: Species ranges may be missing, incomplete, or inaccurate  
and are produced with best available data and thus subject to change.*

