

AD 2. AERODROMES**VOTR AD 2.1 AERODROME LOCATION INDICATOR AND NAME**

VOTR - TIRUCHIRAPPALLI / DOMESTIC

VOTR AD 2.2 AERODROME GEOGRAPHICAL AND ADMINISTRATIVE DATA

1	Aerodrome reference point coordinates and its site	104556N 0784254E 093 DEG /663M from intersection of RWY 09/27 and TWY B.
2	Direction and distance of aerodrome reference point from the center of the city or town which the aerodrome serves	135 DEG, 5 Km from Tiruchirappalli Railway Station.
3	Aerodrome elevation and reference temperature	290 FT / 37.0 DEG C
4	Magnetic variation, date of information and annual change	2.08 DEG W (2010) /0.033 DEG E
5	Name of aerodrome operator, address, telephone, telefax, e-mail address, AFS address, website (if available)	Airports Authority of India, Tiruchirappalli Airport, Tiruchirappalli - 620007
		Telephone: +91-431-2340451, +91-431-2340551, +91-431-2340555
		Fax: +91-431- 2340606
		AFS: VOTRYHYX
		Email: apdtrichy@AAI.AERO
6	Types of traffic permitted (IFR/VFR)	IFR/VFR
7	Remarks	For convenience the name of Airport TIRUCHIRAPPALLI may be pronounced as "TRICHY"

VOTR AD 2.3 OPERATIONAL HOURS

1	Aerodrome Operator	MON-FRI 0400-1230 UTC (0930-1800 IST) SAT, SUN+ HOL : NIL
2	Custom and immigration	As ATS (INTL) See remark No. 2
3	Health and sanitation	As ATS (INTL)
4	AIS briefing office	As ATS
5	ATS reporting office (ARO)	As ATS
6	MET Briefing office	As ATS
7	Air Traffic Service	Consult NOTAM for Current ATS HR
8	Fuelling	As ATS
9	Handling	One-day prior notice to Air India. Non schedule by M/s BHADRA only
10	Security	H24
11	De-icing	NIL
12	Remarks	1. Outside of ATS HR. Services available O/R with 24HR prior notice to AD. 2. Customs and immigration facilities are provided on limited basis to cover operations of scheduled intl. Flights. The facilities can be arranged to cover any authorized NON-SKED operations.

VOTR AD 2.4 HANDLING SERVICES AND FACILITIES

1	Cargo-handling facilities	Manual.
2	Fuel and Oil types	JET A1

3	Fuelling facilities and capacity	IOC: 3 Browsers 2NO.16KLS,1NO.11KLS HPCL: 3 Browsers 1 NO. 27KL 1 No. 16 KL, 1 No. 11 KL , 10Litres/ sec Available during OPR watch otherwise 2HR PN.
4	De-icing facilities	NIL
5	Hangar space for visiting aircraft	Nil
6	Repair facilities for visiting aircraft	Nil
7	Remarks	NIL

VOTR AD 2.5 PASSENGER FACILITIES

1	Hotel(s) at or in the vicinity of aerodrome	In the city.
2	Restaurant(s) at or in the vicinity of aerodrome	AT AD & In the city
3	Transportation possibilities	Taxis from the AD.
4	Medical Facilities	First aid at AD . Hospital in the city.
5	Bank and post office at or in the vicinity of aerodrome	Banks: At AD Vijaya Bank 1100-1330 IST, SAT 1100-1200 IST Post office: 1 KM from AD MON-SAT: (0900-1700 IST) SUN+HOL: NIL
6	Tourist office	As ATS (For SKD INTL FLT at AD.)
7	Remarks	Money exchange counter.

VOTR AD 2.6 RESCUE AND FIRE FIGHTING SERVICES

1	Aerodrome category for fire fighting	Within ATS HR: CAT-7
2	Rescue equipment	Rescue personnel with breathing apparatus, proximity suits, hydraulic rescue tools, inflatable TWR LGTS etc.
3	Capability for removal of disabled aircraft	Two Tractor AVBL with Air India Express, Cranes AVBL with local agencies.
4	Remarks	NIL

VOTR AD 2.7 SEASONAL AVAILABILITY CLEARING

1	Type(s) of clearing equipment	NIL
2	Clearance priorities	NIL
3	Remarks	NIL

VOTR AD 2.8 APRONS, TAXIWAYS AND CHECK LOCATIONS/POSITIONS DATA

1	Designation, surface and strength of aprons	Designator: New Apron Surface: Concrete Strength: PCN 84/R/B/W/T Designator: Old Apron Surface: Concrete Strength: PCN 70/R/C/W/T
---	---	--

2	Designation, width, surface and strength of taxiways	<p>Designator: A Width: 23 M Surface: Strength: PCN 51/F/B/W/T Length: 210M</p> <p>Designator: B Width: 23 M Surface: Strength: PCN 55/F/B/W/T Length: 617M</p> <p>Designator: C Width: 23 M Surface: Strength: PCN 61/F/C/W/T Length: 106M</p> <p>Designator: D Width: 23 M Surface: Strength: PCN 55/F/B/W/T Length: 182M</p>
3	Location and elevation of altimeter checkpoints	Location Apron 104542.9N 0784233E Elevation 88.876M
4	Location of VOR checkpoints	On TWY Holding Position (121DEG./0.33NM) COORD:104552.9N 0784231.5E
5	Position of INS checkpoints	Not Established
6	Remarks	NIL

VOTR AD 2.9 SURFACE MOVEMENT GUIDANCE AND CONTROL SYSTEM AND MARKINGS

1	Use of aircraft stand identification signs, taxiway guidelines and visual docking/parking guidance system at aircraft stands	TWY guidance sign at all the intersection with TWY and RWY and at all holding position Guidelines at Apron. Nose in guidance at aircraft stands.
2	Runway and taxiway markings and lights	<p>RWY Markings: Designation, THR, TDZ, centreline, Edge, End. Lights: THR, Edge, End</p> <p>TWY Marking: Centreline, Holding Positions at all TWY/RWY Intersections Lights: Edge.</p>
3	Stop bars (if any)	NIL
4	Remarks	NIL

VOTR AD 2.10 AERODROME OBSTACLES

In Approach/Take-off/Circling Area and at AD					
1	2	3	4	5	6
RWY/Area affected	Obstacle type	Coordinates	Elevation	Marking/LGT	Remarks
27/TKOF 09/APCH	BUILDING	104553.4N 0784218.1E	299 FT	NIL	LOC BLDG.
27/TKOF 09/APCH	WALL	104555.9N 0784217.4E	295 FT	NIL	BOUND. WALL
27/APCH 09/TKOF	WALL	104555.5N 0784324.8E	280 FT	NIL	BOUND. WALL
27/TKOF 09/APCH	BUILDING	104550.7N 0784217.3E	300 FT	NIL	HOUSE

In Approach/Take-off/Circling Area and at AD					
1	2	3	4	5	6
RWY/Area affected	Obstacle type	Coordinates	Elevation	Marking/LGT	Remarks
27/TKOF 09/APCH	OTHER	104550.6N 0784218.4E	301 FT	NIL	MOB. RD. TFC
27/TKOF 09/APCH	POLE	104550.3N 0784218.1E	307 FT	NIL	POLE
27/APCH 09/TKOF	OTHER	104603.0N 0784323.4E	282 FT	NIL	SEC. HUT
27/TKOF 09/APCH	OTHER	104557.9N 0784215.2E	299 FT	NIL	HOARDING
27/TKOF 09/APCH	POLE	104559.7N 0784215.4E	323 FT	NIL	ELECT. POLE
27/TKOF 09/APCH	TREE	104559.9N 0784215.2E	330 FT	NIL	TREE
27/TKOF 09/APCH	POLE	104559.6N 0784213.4E	304 FT	NIL	ELECT. POLE
27/TKOF 09/APCH	ANTENNA	104555.5N 0784217.9E	297 FT	NIL	LOC ANTENNA
27/TKOF 09/APCH	OTHER	104549.9N 0784217.5E	308 FT	NIL	HOARDING
27/TKOF 09/APCH	TREE	104558.5N 0784208.0E	322 FT	NIL	TREE
27/TKOF 09/APCH	POLE	104559.1N 0784215.2E	308 FT	NIL	ELECT. POLE
27/APCH 09/TKOF	TREE	104603.2N 0784324.8E	307 FT	NIL	TREE
27/TKOF 09/APCH	OTHER	104551.0N 0784218.1E	306 FT	NIL	HOARDING
27/APCH 09/TKOF	TREE	104506.3N 0784344.0E	317 FT	NIL	TREE

VOTR AD 2.11 METEOROLOGICAL INFORMATION PROVIDED

1	Name of the associated meteorological office	Tiruchirappalli
2	Hours of service and, where applicable, the designation of the responsible meteorological office outside these hours	H24
3	Office responsible for preparation of TAFs and periods of validity and interval of issuance of the forecasts	Chennai 9HR (00-09,03-12,06-15,09-18 and 12-21 12HR (00-00,06-06 and 12-12)
4	Availability of the trend forecast for the aerodrome and interval of issuance	NIL
5	Information on how briefing and/or consultation is provided	Available
6	Types of flight documentation supplied and language(s) used in flight documentation	Tabular form English
7	Charts and other information displayed or available for briefing or consultation	Nil
8	Supplementary equipment available for providing information on meteorological conditions, e.g. weather radar and receiver for satellite images;	Nil
9	The air traffic services unit(s) provided with meteorological information	Tiruchirappalli ATC and ACS
10	Additional information, e.g. concerning any limitation of service.	Documents provided O/R.

VOTR AD 2.12 RUNWAY PHYSICAL CHARACTERISTICS

Designations	TRUE Bearings	Dimensions of RWY (M)	Strength of pavement (PCN) and associated data) and surface of runway and associated stopways	Geographical coordinates for threshold and runway end
1	2	3	4	5
09	86.00 DEG	2427 x 45 M	68/F/A/W/T Asphalt	THR: 104556.60N 0784227.60E RWY END:
27	266.00 DEG	2427 x 45 M	68/F/A/W/T Asphalt	THR: 104601.50N 0784342.60E RWY END:

THR elevation and highest elevation of TDZ of precision APP RWY	Slope of runway and associated stopway	Dimensions of stopway (M)	Dimensions of clearway (M)	Dimensions of strips (M)
6	7	8	9	10
THR: 288.0FT TDZ:	-0.21%	NIL	NIL	2547 x 150 M
THR: 266.0FT TDZ:	0.21%	NIL	NIL	2547 x 150 M

Dimensions of runway end safety areas	Location and description of arresting system (if any)	Existence of an obstacle-free zone	Remarks.
11	12	13	14
90M x 90M		Nil	PCN for RWY 09 Flexible - 68/F/A/W/T UPTO 1847M FM RWY 09 BEGINNING Rigid - 86/R/B/W/T FM 1847M TO 2427M RWY 27
90M x 90M		Nil	PCN for RWY 27 Rigid - 86/R/B/W/T UPTO 580M FM RWY 27 BEGINNING Flexible - 68/F/A/W/T FM 580M TO 2427M

VOTR AD 2.13 DECLARED DISTANCES

RWY Designator	Take-off run available TORA (M)	Take-off distance available TODA (M)	Accelerate distance available ASDA (M)	Landing distance available LDA (M)	Remarks (including runway entry or start point where alternative reduced declared distances have been declared)
1	2	3	4	5	6
09	2427	2427	2427	2280	RWY09 THR displaced by 147M due mobile TFC.
27	2427	2427	2427	2427	---

VOTR AD 2.14 APPROACH AND RUNWAY LIGHTING

Runway Designator	Type, length and intensity of approach lighting system	Runway threshold lights, colour and wing bars	Type of visual slope indicator system	Length of runway touchdown zone lights
1	2	3	4	5
09	NIL	Green	PAPI LEFT/3.00 DEG	
27	CAT I 900 M LIH	Green	PAPI LEFT/3.00 DEG	

Length, spacing, colour and intensity of runway centre line lights	Length, spacing, colour and intensity of runway edge lights	Colour of runway end lights and wing bars	Length and colour of stopway lights	Remarks
6	7	8	9	10
	2427 M 60 M White LIH	Red		NIL
	2427 M 60 M White LIH	Red		NIL

VOTR AD 2.15 OTHER LIGHTING, SECONDARY POWER SUPPLY

1	Location, characteristics and hours of operation of aerodrome beacon/identification beacon (if any)	ABN	At Tower Building FLG W and G 13 rotations per min, As ATS HR
		IBN	Nil
2	Location and lighting (if any) of anemometer/landing direction indicator;	LDI	100M SW of intersection of RWY 09/27 and TWY B Unlighted
		Anemometer	At Tower Building , Unlighted
3	Taxiway edge and taxiway centre line lights;	Edge	All TWY
		Centre Line	NIL
4	Secondary power supply including switch-over time;	Secondary power supply to all lighting at AD. Switch over time 15 SEC.	
5	Remarks	NIL	

VOTR AD 2.16 HELICOPTER LANDING AREA

1	Geographical coordinates of the geometric centre of touchdown and lift-off (TLOF) or of each threshold of final approach and take-off (FATO) area	Not Established
2	TLOF and/or FATO area elevation:	Not Established
3	TLOF and FATO area dimensions to the nearest metre or foot, surface type, bearing strength and marking;	Not Established
4	True bearings of FATO;	Not Established
5	Declared distances available	Not Established
6	Approach and FATO lighting;	Not Established
7	Remarks	Not Established

VOTR AD 2.17 AIR TRAFFIC SERVICE AIRSPACE

1	Airspace designation, geographical coordinates and lateral limits	CTR: a) Area bounded by circle of radius 25 NM centered at Trichy VOR TTR (104607N 0784329E). b) Area bounded by 102005.8N 0783955.3E then along arc of 25NM radius centered at Tiruchirappalli VOR TTR (104607N 0784329E) to 111005.6N 0784155.2E; 113405.5N 0785655.1E; then along arc of 50NM radius centered at Tiruchirappalli VOR TTR (104607N 0784329E) to 095605.9N 0784655.2E to 102005.8N 0783955.3E.
2	Vertical limits	
3	Airspace classification	D
4	Call sign and language(s) of the air traffic services unit providing service;	Tiruchirappalli Tower, English
5	Transition altitude	4000 FT
6	Hours of applicability	HO
7	Remarks	Vertical Limits: a) FL 55 b) FL 50 to FL 150

VOTR AD 2.18 AIR TRAFFIC SERVICES COMMUNICATION FACILITIES

Service Designation	Call sign	Channel(s)	SATVOICE Number(s), if available
1	2	3	4
APP	Tiruchirappalli Approach	124.000 MHZ	
TWR	Tiruchirappalli Tower	118.300 MHZ	
ATIS	----	127.800 MHZ	
ALRS	-----	121.500 MHZ	

Logon address, as appropriate	Hours of operation	Remarks
5	6	7
	As ATS	NIL
	As ATS	Functions of TWR & ARP combined.
		NIL
	As ATS	NIL

VOTR AD 2.19 RADIO NAVIGATION AND LANDING AIDS

Type of aids, magnetic variation and type of supported operation for ILS/MLS, basic GNSS, SBAS and GBAS, and for VOR/ILS/MLS station used for technical lineup of the aid	Identification	Frequency(ies), Channel number(s), Service provider, and reference path identifier(s) (RPI), as appropriate	Hours of operation, as appropriate;
1	2	3	4
LOC 27	ITCY	110.900 MHz	As ATS
GP 27	ITCY	330.800 MHz	As ATS
DME ILS 27	ITCY	CH46X	As ATS

Type of aids, magnetic variation and type of supported operation for ILS/MLS, basic GNSS, SBAS and GBAS, and for VOR/ILS/MLS station used for technical lineup of the aid	Identification	Frequency(ies), Channel number(s), Service provider, and reference path identifier(s) (RPI), as appropriate	Hours of operation, as appropriate;
DVOR/DME	TTR	113.100 MHz CH78X	H24
NDB	TR	307 kHz	H24

Geographical coordinates of the position of the transmitting antenna	Elevation of transmitting antenna of DME/ elevation of GBAS reference point	Service volume radius from the GBAS reference point	Remarks
5	6	7	8
104554.8N 0784219.0E			
104556.7N 0784334.0E			
104556.7N 0784334.0E	340 FT		
104607.2N 0784329.3E	292 FT		
104541.0N 0784306.0E			

VOTR AD 2.20 LOCAL AERODROME REGULATIONS

VOTR AD 2.21 NOISE ABATEMENT PROCEDURES

VOTR AD 2.22 FLIGHT PROCEDURES

VOTR AD 2.23 ADDITIONAL INFORMATION

- 1.High power DME antenna installed over VOR antenna height 44FT and lighted.
- 2.GP antenna obstacle marked and lighted.
- 3.Disused RWY15/33 (converted as TWY)
- 4.Commissioning of ADS-B at Tiruchirappalli Airport:
ADS-B FREQ: 1090 MHZ
COORD: 104544N0784227E
SITE ELEV : 104.8M AMSL
- 5.Old turning pad at distance of 580 m from the beginning of RWY 27 and 1860 m from the beginning of RWY 09 is declared u/s, marking provided. Pilots to avoid using old turn pad while taxiing on RWY 09/27.

6.DETAILS OF AIRCRAFT STANDS

Stand No.	Surface	PCN	Latitude	Longitude	TYPE	Remarks
1.	concrete	70/R/C/W/T	104541.5N	0784234.5E	B739/A321 OR BELOW	POWER IN/ POWER-OUT
2.	concrete	70/R/C/W/T	104540N	0784235E	B739/A321 OR BELOW	POWER IN/ POWER-OUT
3.	concrete	70/R/C/W/T	104539N	0784236E	B739/A321 OR BELOW	POWER IN/ POWER-OUT
4.	concrete	70/R/C/W/T	104538N	0784237E	B739/A321 OR BELOW	POWER IN/ POWER-OUT
5.	concrete	84/R/B/W/T	104536 N	0784237.5	B767-200 OR BELOW	POWER IN/ PUSH BACK
6.	concrete	84/R/B/W/T	104535 N	0784238E	B767-200 OR BELOW	POWER IN/ PUSH BACK
7.		84R/C/W/T.	104533N	0784239E	UPTO B767-200 SERIES	POWER IN/ PUSH BACK

7.PUSHBACK PROCEDURE

(i)ACFT pushing back FM stand NR 7 can either push-back facing south and taxi via TWY C or push-back facing west on to TWY C and taxi via TWY A.

(ii)ACFT pushing back FM stand NR 5 and 6 can either pushback facing south to taxi via TWY C or pushback facing north to taxi via TWY A

VOTR AD 2.24 CHARTS RELATED TO AN AERODROME

- 1.Aerodrome Obstacle Chart. Type-A (Obstacle Limitations) RWY 09
- 2.Aerodrome Obstacle Chart. Type-A (Obstacle Limitations) RWY 27
- 3.ILS (Z) Procedure Runway 27
- 4.ILS (Y) Procedure Runway 27
- 5.VOR Procedure Runway 09
- 6.VOR Procedure Runway 27
- 7.ATC Surveillance Minimum Altitude Chart

ELEVATIONS IN FEET
ALL OTHER DIMENSIONS IN METRES

AERODROME OBSTACLE CHART

TYPE -A (OPERATING LIMITATIONS)

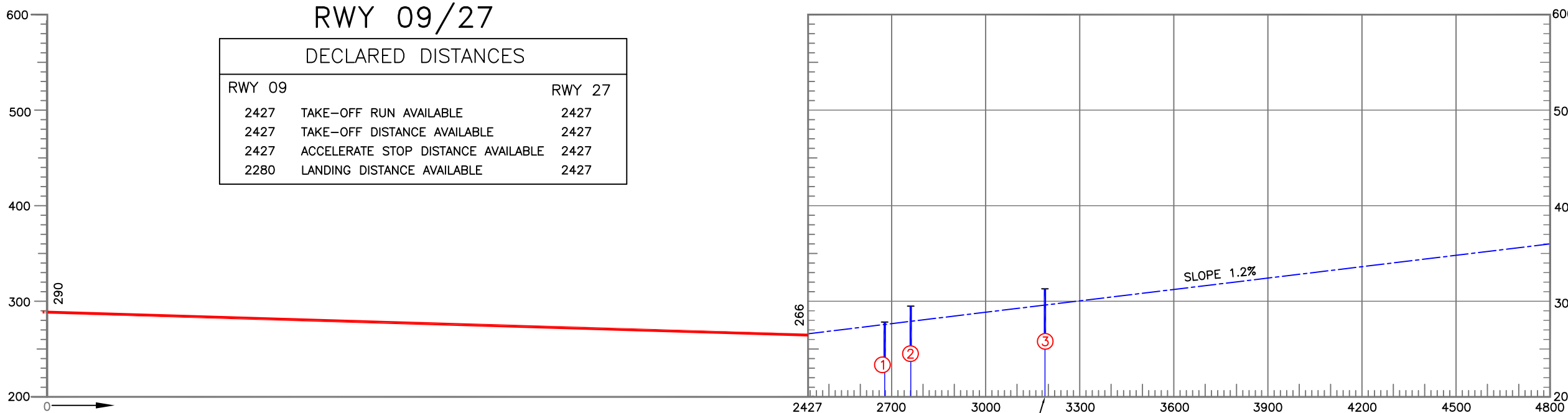
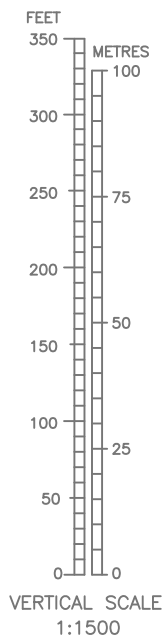
INDIA/TIRUCHIRAPPALLI
TIRUCHIRAPPALLI AIRPORT/RWY 09

MAGNETIC VARIATION -2°00'W(2010)

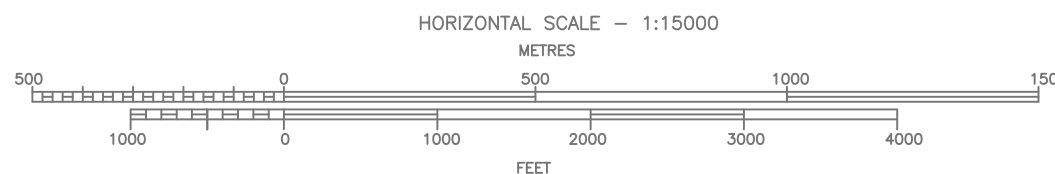
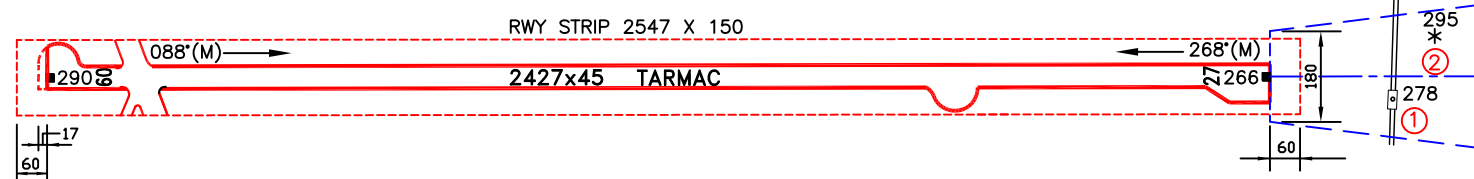
RWY 09/27

DECLARED DISTANCES

RWY 09	RWY 27
2427 TAKE-OFF RUN AVAILABLE	2427
2427 TAKE-OFF DISTANCE AVAILABLE	2427
2427 ACCELERATE STOP DISTANCE AVAILABLE	2427
2280 LANDING DISTANCE AVAILABLE	2427



NO SIGNIFICANT OBSTACLES
BEYOND THIS POINT



- NOTES:-**
- The objects that have been shielded due to presence of other higher objects have not been shown in this chart.
 - Obstructions in the form of trees which are being cut or pruned have not been taken into consideration for establishing threshold displacement.
 - Datum - All Elevations are AMSL.
 - Periphery road without traffic is no obstacle.
 - Consult Notam for latest information.
 - Rwy directions rounded to nearest degree.(Magnetic) (In degree minute : Rwy 09/27 = 088°00'/268°00') (taken upto 2013)
 - All obstacles shown in this chart are based on aeronautical obstacle Survey June 2008.

LEGEND		
	PLAN	PROFILE
IDENTIFICATION NUMBER	①	
TREE OR SHRUB	*	
MOBILE ROAD TRAFFIC	=	

ORDER OF ACCURACY
HORIZONTAL - 3.0m
VERTICAL - 1.0ft

AMENDMENT RECORD		
NO.	DATE	ENTERED BY

AERONAUTICAL INFORMATION UPTO - FEB.2014
वैमानिक सूचना . फरवरी 2014 तक

COMPILED BY : CARTO-ACC, AIRPORTS AUTHORITY OF INDIA
संग्रहित किया :कार्टो-वै.मा.प्र., भारतीय विमानपत्तन प्राधिकरण

CHART No.AAI/07-OBS/CARTO-ACC/2014
चार्ट सं. भा.वि.प्रा./07-अव./कार्टो-वै.मा.प्र./2014

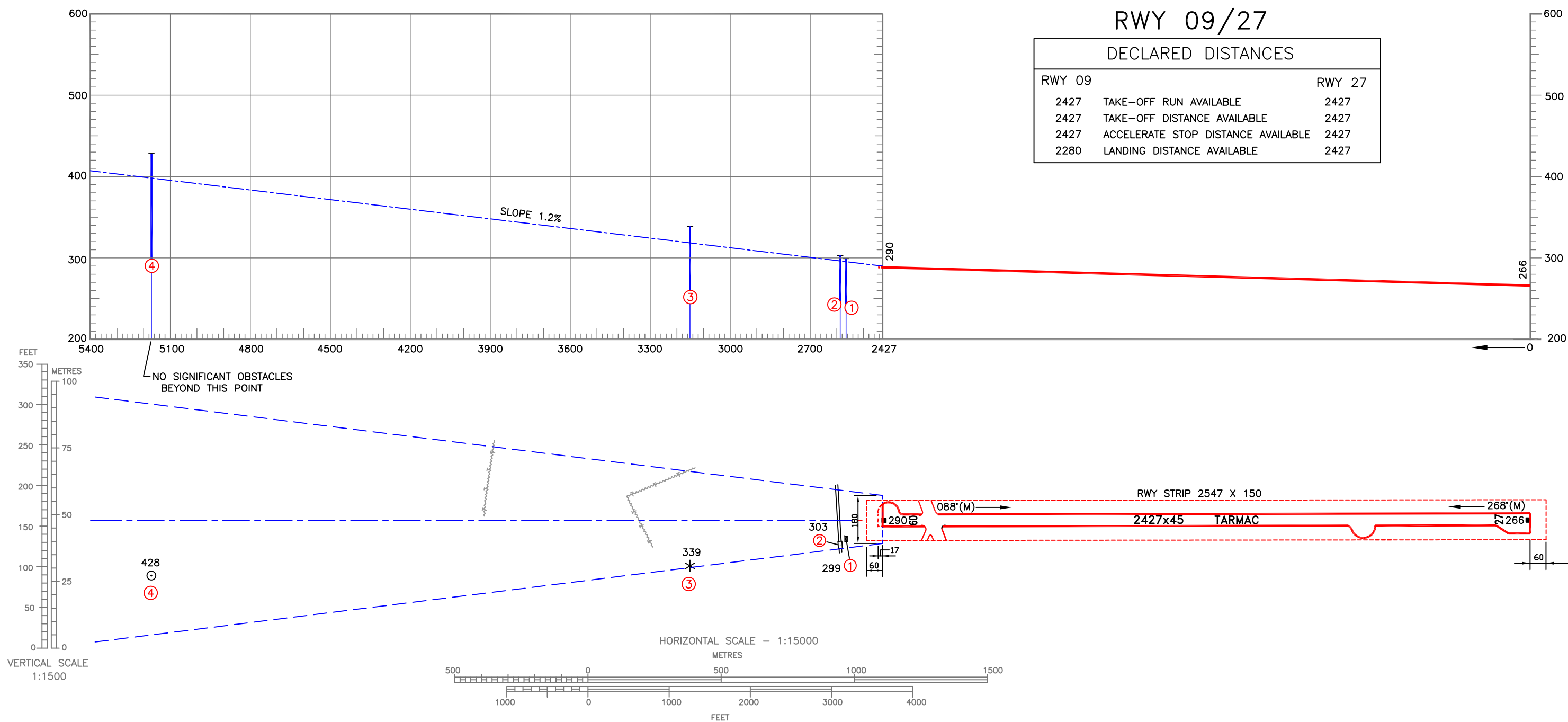
ELEVATIONS IN FEET
ALL OTHER DIMENSIONS IN METRES

AERODROME OBSTACLE CHART

TYPE -A (OPERATING LIMITATIONS)

INDIA/TIRUCHIRAPPALLI
TIRUCHIRAPPALLI AIRPORT/RWY 27

MAGNETIC VARIATION -2°W (2010)



LEGEND		
	PLAN	PROFILE
IDENTIFICATION NUMBER	①	
TREE OR SHRUB	*	
BUILDING OR LARGE STRUCTURE	■	
MOBILE ROAD TRAFFIC	=	
POLE, TOWER, SPIRE, ANTENNA ETC...	⊙	
HIGH TENSION LINE	~	

ORDER OF ACCURACY	
HORIZONTAL	- 3.0m
VERTICAL	- 1.0ft

- NOTES:-**
- The objects that have been shielded due to presence of other higher objects have not been shown in this chart.
 - Obstructions in the form of trees which are being cut or pruned have not been taken into consideration for establishing threshold displacement.
 - Datum - All Elevations are AMSL.
 - Periphery road without traffic is no obstacle.
 - Consult Notam for latest information.
 - Rwy directions rounded to nearest degree. (Magnetic)
(In degree minute : Rwy 09/27 = 088°00'/268°00')
(taken upto 2013)
 - All obstacles shown in this chart are based on aeronautical obstacle Survey June 2008.

AMENDMENT RECORD		
NO.	DATE	ENTERED BY

AERONAUTICAL INFORMATION UPTO - FEB.2014
वैमानिक सूचना . फरवरी 2014 तक

COMPILED BY : CARTO-ACC, AIRPORTS AUTHORITY OF INDIA
संग्रहित किया : कार्टो-वै.मा.प्र., भारतीय विमानपत्तन प्राधिकरण

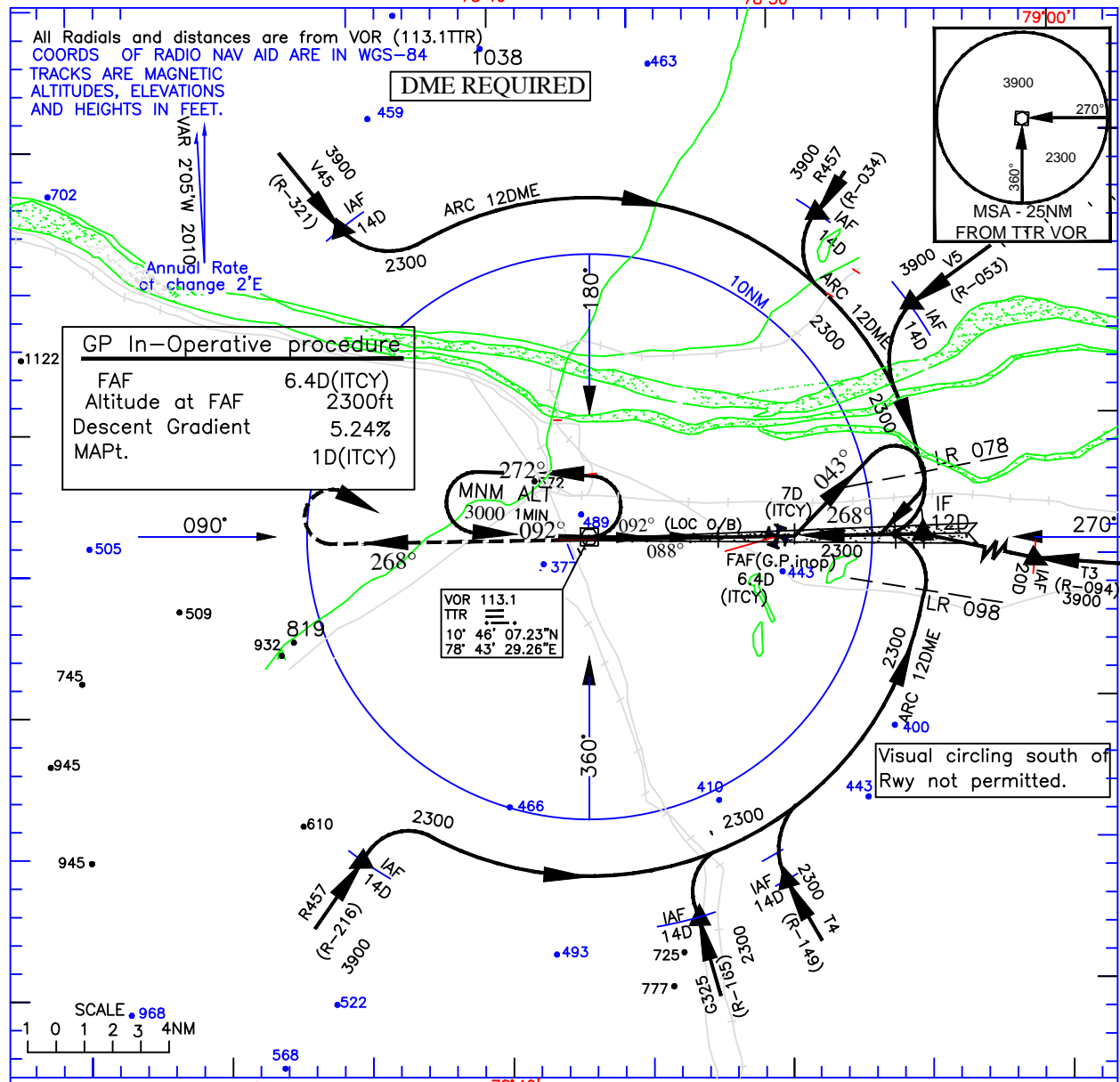
CHART No. AAI/08-OBS/CARTO-ACC/2014
चार्ट सं. भा.वि.प्रा./08-अव./कार्टो-वै.मा.प्र./2014

INSTRUMENT
APPROACH
CHART

AERODROME ELEV. 290ft.
HEIGHTS RELATED TO
THR RWY 27 ELEV.266ft

APP.124.0
TWR.118.3

TIRUCHIRAPALLI
INDIA
ILS(Z)RWY 27



Missed Approach

Climb straight ahead to 2000ft, then climbing turn RIGHT to join VOR holding at 3000ft or as instructed by ATC.

ILS RDH 50

VOR/DME 1/c Loc

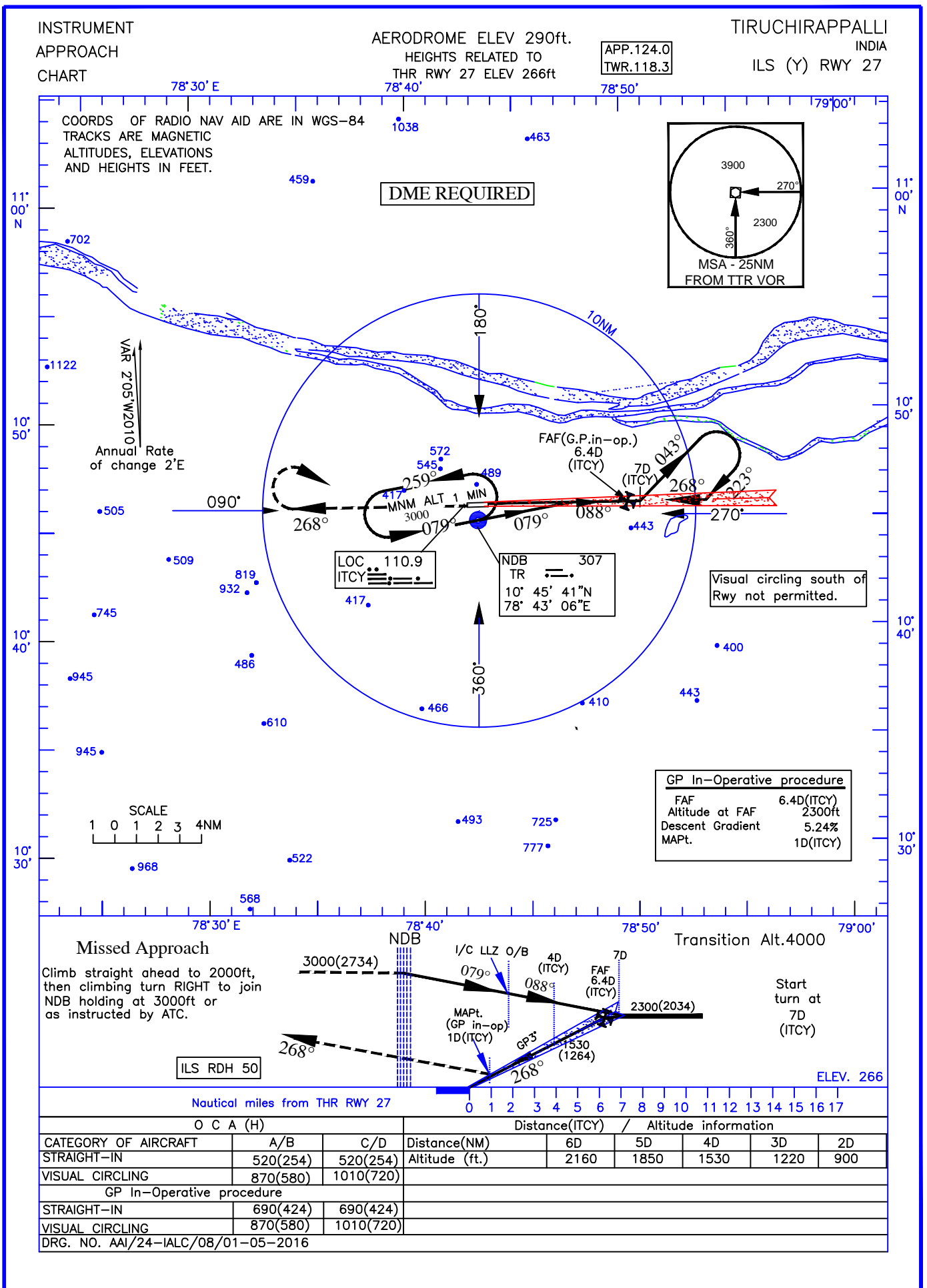
Transition Alt.4000

Start turn at 7D (ITCY)

ELEV. 266

Nautical miles from THR RWY 27			Distance(ITCY) / Altitude information (GP in-op)					
O	C	A (H)	Distance(NM)	6D	5D	4D	3D	2D
CATEGORY OF AIRCRAFT	A/B	C/D	Distance(NM)	6D	5D	4D	3D	2D
STRAIGHT-IN	520(254)	520(254)	Altitude (ft.)	2160	1850	1530	1220	900
VISUAL CIRCLING	870(580)	1010(720)						
GP In-Operative procedure								
STRAIGHT-IN	690(424)	690(424)						
VISUAL CIRCLING	870(604)	1010(744)						
DRG. NO. AAI/ 26-IALC/05/01.05.16								

AIRPORTS AUTHORITY OF INDIA

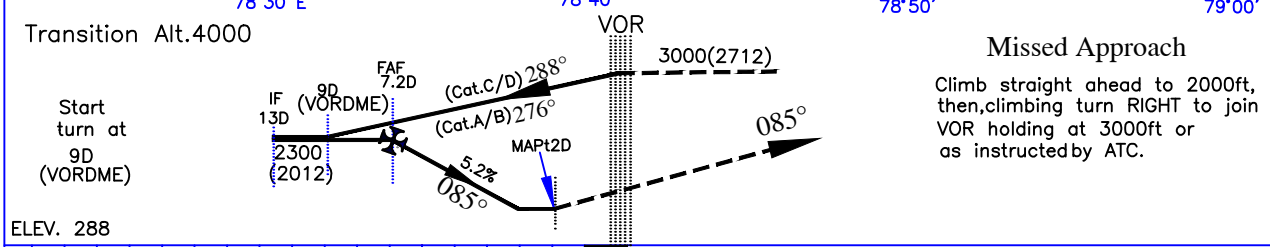
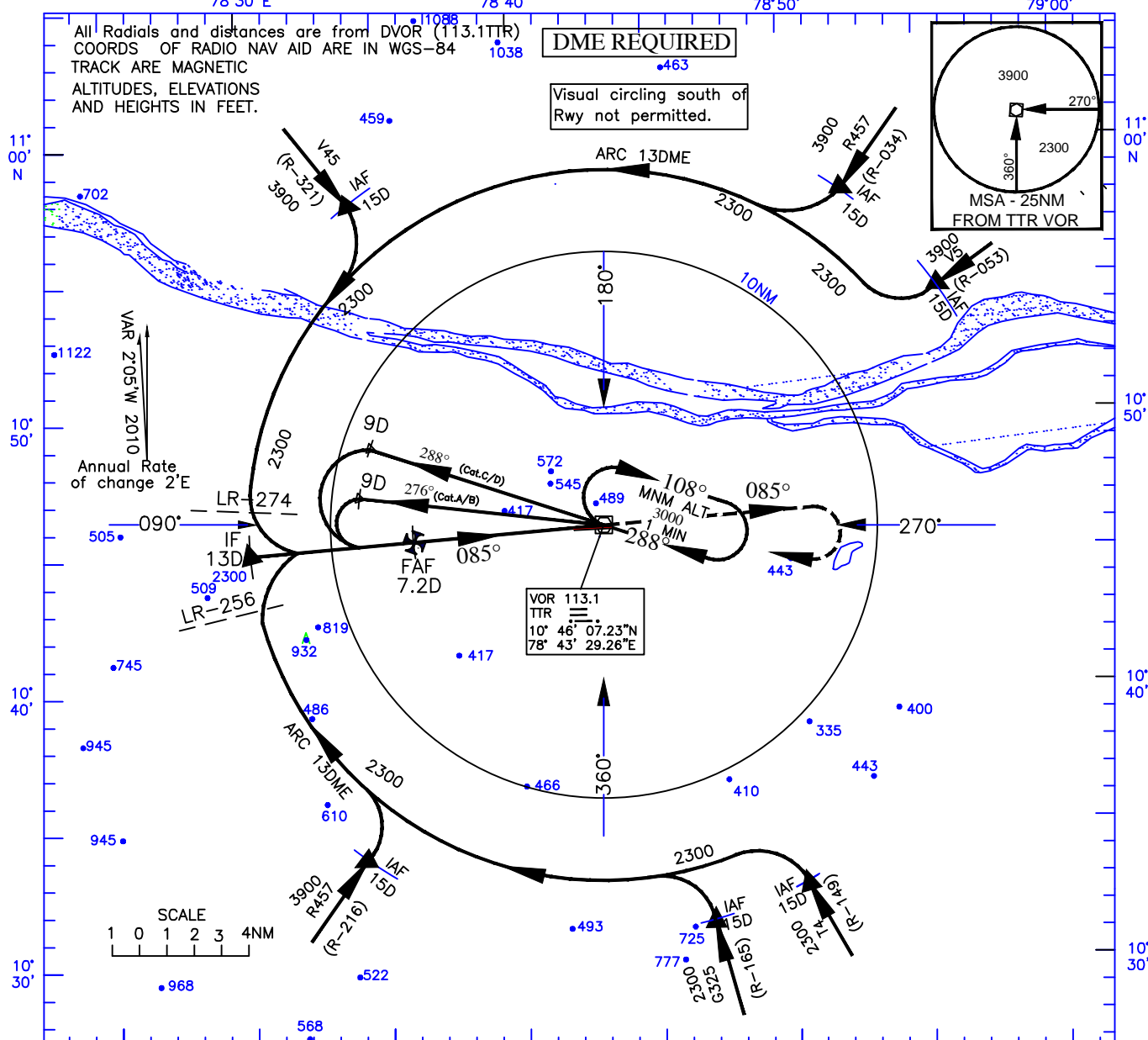


INSTRUMENT
APPROACH
CHART

AERODROME ELEV 290ft.
HEIGHTS RELATED TO
THR RWY 09 ELEV 288ft

APP.124.0
TWR.118.3

TIRUCHIRAPALLI
INDIA
VOR RWY 09



CATEGORY OF AIRCRAFT	O C A (H)		Distance / Altitude information					
	A/B	C/D	Distance(NM)	7D	6D	5D	4D	3D
STRAIGHT-IN	690(400)	690(400)	Altitude (ft.)	2240	1920	1610	1290	970
VISUAL CIRCLING	870(580)	1010(720)						

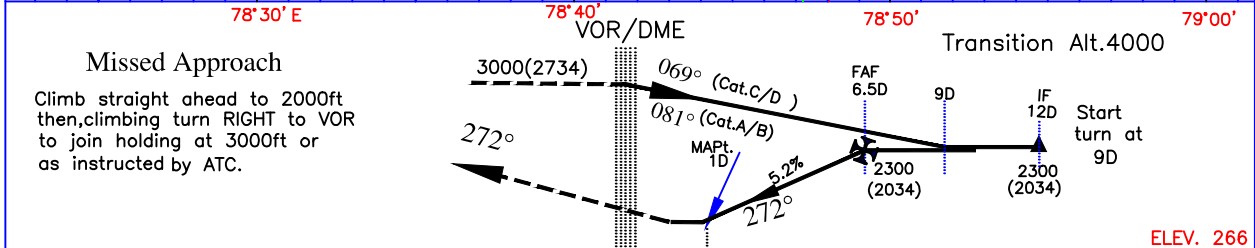
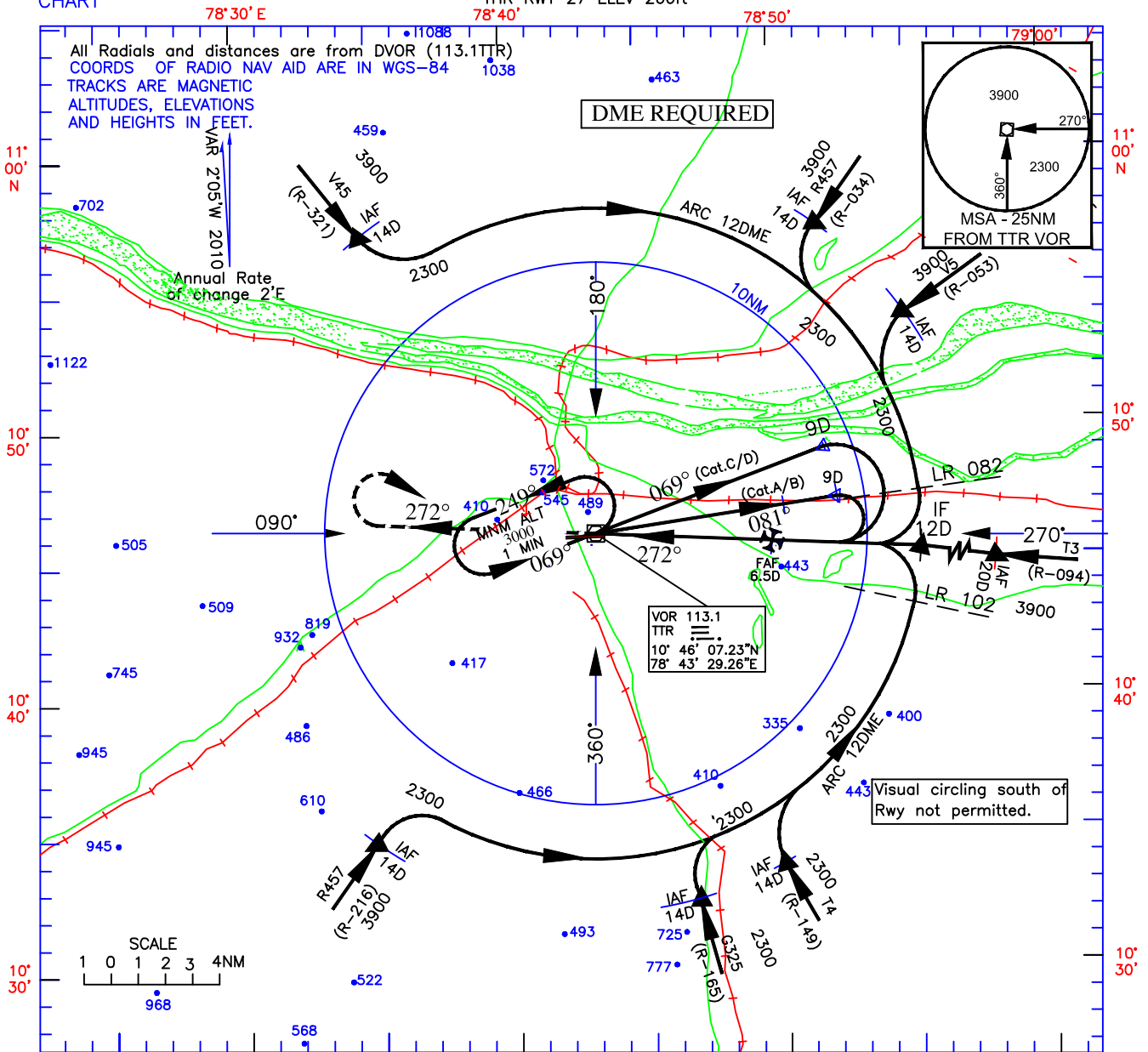
DRG. NO. AAI/58-IALC/04/01.05.16

INSTRUMENT
APPROACH
CHART

AERODROME ELEV 290ft.
HEIGHTS RELATED TO
THR RWY 27 ELEV 266ft

APP.124.0
TWR.118.3

TIRUCHIRAPALLI
INDIA
VOR RWY 27



Nautical miles from THR RWY 27

0	1	2	3	4	5	6	7	8	9	10	11	12	13	14	15	16	17
---	---	---	---	---	---	---	---	---	---	----	----	----	----	----	----	----	----

CATEGORY OF AIRCRAFT	O C A (H)		Distance / Altitude information					
	A/B	C/D	Distance(NM)	6D	5D	4D	3D	2D
STRAIGHT-IN	690(424)	690(424)		2140	1830	1510	1200	880
VISUAL CIRCLING	870(580)	1010(720)						

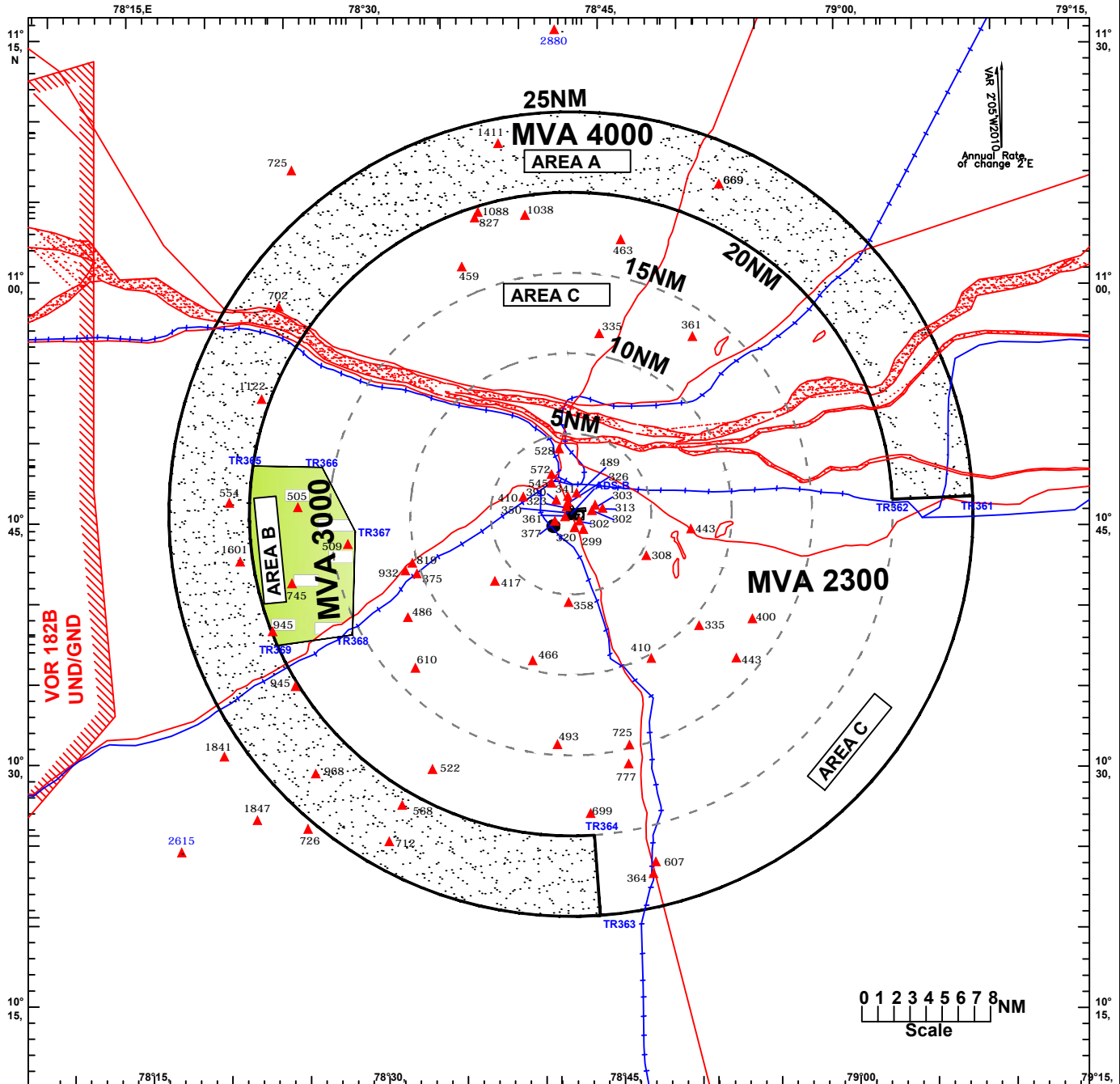
DRG. NO. AAI/ 24-IALC/04/01.05.16

Ad. Elev.-290
Transition Alt.-4000
Mag. Var. - 2°05' W (2010)

APP. 124.00
TWR. 118.30

TIRUCHIRAPPALLI (VOTR) ATC Surveillance Minimum Altitude Chart

All altitude in feet



S.No	Boundary Points	Latitude	Longitude
1	TR361	104651.99N	0790747.35E
2	TR362	104639.95N	0790240.40E
3	TR363	102038.78N	0784336.69E
4	TR364	102543.67N	0784322.47E
5	TR365	104842.50N	0782230.54E
6	TR366	104837.30N	0782640.33E
7	TR367	104437.35N	0782839.15E
8	TR368	103813.00N	0782817.77E
9	TR369	103736.52N	0782348.68E

Radio Communication Failure Procedure:

When providing navigational guidance to aircraft based on the use of an air traffic services surveillance system for pilot interpreted final approach aid, following radio communication failure procedure shall be applicable-

- 1.If radio communication failure takes place prior to interception of final approach track, aircraft shall maintain the last assigned altitude or 4000ft whichever is higher and proceed to TTR VOR/TR NDB via shortest route to join the holding procedure.After joining the holding procedure aircraft shall carryout the instrument approach procedure for RWY for which navigational guidance was provided.
- 2.If radio communication failure occurs after interception of the final approach track, aircraft should continue the approach and land if visual or carryout the missed approach and join the TTR VOR/TR NDB holding at 3000ft.After joining the holding procedure aircraft shall carryout the instrument approach procedure for RWY for which navigational guidance was provided.

NOTE:

1. Altitudes shown are based on QNH.
2. Only significant spot elevations are shown
3. ATC Surveillance Minimum Altitudes are established within 25NM of ARP (10 45 56N 078 42 54E)
4. Chart may only be used for cross-checking of altitude assigned while the aircraft is identified.