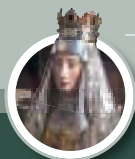


ANDENNE

Museums and discoveries



Andenne and its hidden treasures...

To be discovered in its museums and in its outstanding places of interest such as the last pipeworks in Belgium or even on the site of the archaeological excavations of Scladina.



■ Ceramics Museum

Situated in the heart of old Andenne, the Ceramics Museum invites you to relive the fascinating history of malleable clay and its products, from the very beginning until today. The Andenne Museum displays some of the finest pieces of earthenware and ceramic in Belgium.

Practical info

Ceramics Museum
(Musée de la Céramique),
rue Charles Lapierre, 29
5300 Andenne.

Phone: +32 (0)85 84 41 81

Fax: +32 (0)85 84 56 31

www.ceramandenne.be

■ Collection of relics and ornaments and museum of Saint Begga's Collegiate church

Saint Begga's Collegiate church, in the neoclassical style, is the work of the architect L-B DEWEZ. It was built in the 18th century on the spot where the convent founded by Saint Begga, great-great-grandmother of Charlemagne, used to stand. In the rooms and annexes of the Collection and Museum, you can admire textiles, sculptures, manuscripts, goldsmithery, funerary monuments from the 16th to the 18th century and religious chinaware from Andenne.



Practical info

Collection of relics and ornaments and museum of Saint Begga's Collegiate church (Trésor et Musée de la Collégiale),
place du Chapitre - 5300 Andenne
Phone : +32 (0)85 84 13 44

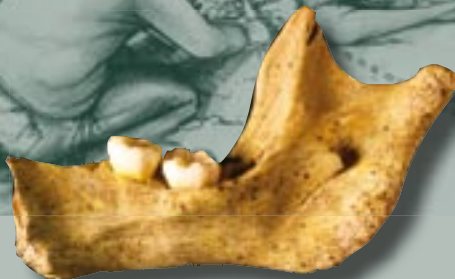
■ Andenelle Pipeworks

Pipemakers have been present in Andenne since 1758. The Léonard family has been carrying on the tradition of working clay for three generations ... Pascal Léonard shares that family passion with the visitor. Next to the old workshops, the "Estaminet" provides an opportunity to taste original tobaccos in the famous clay pipes ...



Practical info

Andenelle Pipeworks (Piperie d'Andenelle),
rue Cuvelier, 7 - 5300 Andenne
Phone : +32 (0)472 25 10 75
www.lapiperie.be



■ The Scladina cave

Great prehistoric sites open to the public are rare and among those, the Scladina Cave is a unique case! Archaeologists are working there on a day-to-day basis. Under their supervision, you will enter the heart of the site. You will have the chance to get to know the ropes of a job where patience is married with passion. They will share with you the discoveries and the studies made about the Child of Sclayn. Visiting Scladina is an outstanding opportunity to observe an excavation site in action!

Practical info

The Scladina cave (Archéologie Andennaise a.s.b.l.),
rue Fond des Vaux, 339d - 5300 Sclayn
Phone and fax : +32 (0) 81 58 29 58
scladina@swing.be
www.scladina.be

**More detailed brochures are available from
the Tourist Office of the Town of Andenne.**

