

THE TURKS AND CAICOS ISLANDS

2012 CENSUS OF

POPULATION AND HOUSING TABLES

(GRAND TURK TO PINE CAY)

DECEMBER 2013



“BE COUNTED IN SO THAT YOU COULD BE COUNTED ON”

**Strategic Policy and Planning Department
Government of the Turks and Caicos Islands**

2012 POPULATION AND HOUSING CENSUS TABLES (Grand Turk to Pine Cay)

December 2013



PUBLISHED & PRINTED BY:

STATISTICAL OFFICE

DEPARTMENT OF ECONOMIC PLANNING & STATISTICS

SOUTH BASE

GRAND TURK

TURKS & CAICOS ISLANDS

TELEPHONE: (649) 946-2801

FAX: (649) 946-2557

E-MAIL: INFO@DEPSTC.ORG

WEBSITE: WWW.DEPSTC.ORG

Table of Contents

| | |
|---|---------|
| INTRODUCTION | 10 |
| KEY DEFINITIONS, CONCEPTS AND EXPLANATORY NOTES | 11 - 16 |
| Explanatory notes to the census tables | |
| Household | |
| Head count population | |
| Tabular population | |
| Head of household | |
| Household members | |
| Institution | |
| Marital and Union Status | |
| Union status | |
| Resident | |
| Sex ration | |
| Labour Force | |
| Disability | |
| Employed | |
| OECD Definition of The unemployed | |
| POPULATION CHANGE AMONG THE ISLANDS | 17 |
| GEOGRAPHIC DISTRIBUTION AND POPULATION GROWTH | 17 |
| SEX RATIO | 18 |

TABLES

| | |
|---|----|
| Table 1.1.1 Population by Island for the Census Years: 1960 – 2012 | 19 |
| Table 1.1.2 Percentage Distribution of the Population: 1960 – 2012. | 19 |
| Table 1.1.3 Total Population by Island, Locality and Sex: 2012 versus 2001. | 21 |
| Table 1.1.4: Total Population by Single Age, Sex and Status, 2012. | 22 |

| | |
|---|----|
| Table 1.1.5: Total Population by Age Grouping, Sex & Status, 2012. | 25 |
| Table 1.1.6: Total Population by Age Grouping and Sex, 2012 | 26 |
| Table 1.1.7: Population by Ethnic, Racial or National Group, 2012. | 27 |
| Table 1.1.8: Belonger Breakdown by Country of Birth, 2012. | 28 |
| Table 1.1.9: Ways in Which Belongership was Acquired by Sex, 2012. | 28 |
| Table 1.1.10: Breakdown of Population by Status, 2012. | 29 |
| Table 1.1.11: TCI Population and Population Density | 29 |
| Table 2.1.1: Percentage Change in the Number of Households by Islands, 2001 – 2012. | 39 |
| Table 2.1.2: Average Household Size 2001 versus 2012. | 39 |
| Table 2.1.3: Distribution of Household by Island and Type of Ownership, 2012. | 40 |
| Table 2.1.4: Percentage Distribution of Household by Island and Type of Ownership, 2012. | 40 |
| Table 2.1.5: Household by Island and Type of Dwelling, 2012. | 41 |
| Table 2.1.6: Environmental Issues Affecting the Household by Island, 2012. | 41 |
| Table 2.1.7: Number of Rooms in the Household by Island, 2012. | 42 |
| Table 2.1.8: Number of Bedrooms in the Household by Island, 2012. | 42 |
| Table 2.1.9: Year when Dwelling was Built by Island, 2012. | 43 |
| Table 2.1.10: Year when Dwelling was Built by Island, 2012, Percent. | 43 |
| Table 2.1.11: Insured Households by Island, 2012. | 44 |
| Table 2.1.12: Percentage Breakdown of Insured Households by Island, 2012 | 44 |
| Table 2.1.13: Breakdown of Household by Island With Contents Insured 2012. | 45 |
| Table 2.1.14: Percentage Breakdown of Household by Island with Contents Insured 2012. | 45 |
| Table 2.1.15: Household by Island and Outer Wall Material, 2012. | 46 |
| Table 2.1.16: Percentage Breakdown of Household by Island and Outer Wall Materials, 2012. | 46 |
| Table 2.1.17: Household by Outer Wall Material and Island, 2012. | 47 |

| | |
|--|----|
| Table 2.1.18: Percentage Distribution of Household by Outer Wall Material and Island, 2012. | 47 |
| Table 2.1.19: Household by Island and Main Floor Materials, 2012 | 48 |
| Table 2.1.20: Percentage Distribution of Household by Island and Main Floor Materials, 2012. | 48 |
| Table 2.1.21: Household by Island and Type of Toilet Facilities, 2012. | 49 |
| Table 2.1.22: Percentage Distribution of Household by Island and Type of Toilet Facilities, 2012. | 49 |
| Table 2.1.23: Household by Island and Type of Bathing Facilities, 2012. | 50 |
| Table 2.1.24: Percentage Distribution of Household by Island and Type of Bathing Facilities, 2012. | 50 |
| Table 2.1.25: Household by Island and Main Source of Lighting, 2012. | 51 |
| Table 2.1.26: Household by Island and Main Source of Water, 2012. | 51 |
| Table 2.1.27: Household by Island and Main Source of Drinking Water, 2012. | 52 |
| Table 2.1.28: Percentage Distribution of Household by Island and Main Source of Drinking Water, 2012. | 52 |
| Table 2.1.29: Household by Island and Type of Cooking Fuel Used 2012. | 53 |
| Table 2.1.30: Percentage Distribution of Household by Island and Type of Cooking Fuel Used 2012. | 53 |
| Table 2.1.31: Household by Island and Main Method of Garbage Disposal, 2012. | 54 |
| Table 2.1.32: Household by Island and Number of Private Vehicles Kept, 2012. | 54 |
| Table 2.1.33: Household with Computers by Island, 2012. | 55 |
| Table 2.1.34: Percentage Distribution of Household with Computers by Island, 2012. | 55 |
| Table 2.1.35: Household with Access to Selected Amenities by Island, 2012. | 56 |
| Table 3.1.1. Total Population by Island and Religious Denomination, 2012. | 59 |
| Table 3.1.2. Total Population by Status and Religious Denomination, 2012. | 60 |
| Table 3.1.3. Total Population by Status and Religious Denomination, 2012. | 61 |

| | |
|---|----|
| Table 3.1.3: Total Population by Country of Birth and Religious Denomination, 2012. | 62 |
| Table 3.2.1: Working Age Population by Age and Employment Status, 2012. | 65 |
| Table 3.2.2: Working Age Population by Age and Employment Status, 2012. | 66 |
| Table 3.2.3: Working Age Population by Employment Category, Age and Status, 2012. | 67 |
| Table 3.2.4: Number of Persons Employed by Hours worked in Main Job by Sex and Status, 2012. | 68 |
| Table 3.2.5: Percent Employed by Hours worked in Main Job by Sex and Status, 2012. | 69 |
| Table 2.2.7: Number of Persons Employed by Category of Worker in Main Job and Island, 2012. | 70 |
| Table 2.2.7: Number of Persons Employed by Category of Worker in Main Job and Island, 2012. | 71 |
| Table 2.2.8: showing Main Reason Persons did not look for a job by sex, 2012. | 72 |
| Table 3.2.1: School Attendance by Island, 2012. | 75 |
| Table 3.2.2: School Attendance by Island, 2012, Percent. | 75 |
| Table 3.2.3: Access to the Internet in the last Three Months by Island, 2012. | 76 |
| Table 3.2.4: Access to the Internet in the last Three Months by Island, 2012, Percent. | 76 |
| Table 3.2.5: Places Where Internet was Accessed by Island, 2012. | 77 |
| Table 3.2.6: Places Where Internet was Accessed by Island, 2012. | 77 |
| Table 3.2.7: Highest Level of Education Completed by Status, 2012 | 78 |
| Table 3.2.8: Highest Level of Education Completed by Status, 2012, Percent. | 78 |
| Table 3.2.9: Highest Level of Education Completed by Island, 2012 | 79 |
| Table 3.2.10: Highest Level of Education Completed by Island, 2012, Percent. | 79 |
| Table 3.2.11: Highest Level of Education Completed by Sex, 2012, percent. | 80 |
| Table 3.2.12: Highest Examination Passed by Status, 2012, Percent. | 81 |
| Table 3.2.13: Highest Examination Passed by Island, 2012 | 82 |

| | |
|---|----|
| Table 3.2.14: Highest Examination Passed by Island, 2012, Percent. | 82 |
| Table 3.2.15: Highest Examination Passed by Sex, 2012, Percent. | 83 |
| Table 3.2.16: Highest Level of Training by Sex, 2012. | 84 |
| Table 3.3.1: Incidence of Disabilities by Type of Disability, Sex and Status. | 87 |
| Table 3.3.2: Incident of Illnesses by Type of Illness, sex and Status. | 88 |
| Table 3.3.3: Incident of Illnesses by Type of Illness and Age Breakdown. | 89 |
| Table 3.4.1: Union Status by Sex and Status, 2012. | 93 |
| Table 3.4.2: Union Status by Sex and Status, 2012, (Percent) | 93 |
| Table 3.4.3: Marital Status by Island Sex and Status, 2012. | 94 |
| Table 3.5.1 Number of Live Births by Age Group, 2012. | 97 |

CHARTS

Chart 1.1.1 Percentage Changes in the Population for the Census Years: 1960 - 2012

Population pyramids for selected islands: 2001 versus 2012

INTRODUCTION

The Strategic Policy and Planning Department (SPPD) is pleased to release the standard census tables of the 2012 Population and Housing Census for the Islands of Grand Turk to Pine Cay. The tables presented were obtained from the **analysis** of the data collected during the Turks and Caicos Islands 2012 Population and Housing Census. The data represents the answers given by persons during the enumeration process.

The 2012 Population and Housing Census was undertaken as part of the 2010 Round of Population and Housing Census in the region. The Department expresses sincere thanks and deepest appreciation to all persons who participated in the Census and cooperated with Enumerators.

We also wish to express our gratitude to all those persons too numerous to mention who have been associated in any way with the planning and conduct of the 2012 Population and Housing Census. Special mention is made of the Field Personnel, Enumerators and their Supervisors and Field Editors whose dedication and commitment to a very difficult exercise made the realization of the project objectives possible.

We will like to also express sincere thanks to the various media houses for their cooperation and patience during the process. The department will be forever grateful for their support during the process. There were a number of challenges during the process but we believe that we have been able to get the best possible results given the different constraints.

KEY DEFINITIONS, CONCEPTS AND EXPLANATORY NOTES

Explanatory notes to the census tables

The attached 2012 Census tables contain information from households who were interviewed during the Census period January, 2012 to April 2012.

The total population in most of these tables does not add up to the total non-institutional headcount population (31,458). In this case the total population for the Islands Grand Turk to Pine Cay does not add up to the total non-institutional headcount population of . As usual in any censuses a number of residents were confirmed to be residents (have stayed on Island for at least six months and have intentions to stay on Island) based on information from neighbours and/or landlords. However, no interviews with them were conducted due to lack of contact despite at least three attempts by enumerators/interviewers. Hence, the total population reflected in a number of these tables is less than the total population for the area.

Some tables present multiple responses (disability and illness) or dual responses (citizenship) hence they may sum up to more than the population count.

All figures are rounded up to the nearest decimal place. DK/NS are responses “Don’t Know/Not Stated.”

Household

A household comprises either one person living alone or a group of persons (not necessarily related) living at the same address **AND** with common housekeeping i.e. sharing at least one meal a day **OR** sharing a living room.

In most cases, the dwelling unit will also be the household. There are cases however, where this is not so. In the Turks and Caicos Islands, rooms in dwelling units are sometimes rented individually by the ‘owner.’ While these persons may share a common living area, each room is treated as a separate household.

Head count population

The head count population is based on all residents including those who were unavailable to be interviewed but were confirmed by neighbours, property managers or landlords to be resident for at least 6 months.

The population total in most of the 2012 Census tables will not necessarily be equal to the headcount population as some residents may have been counted in the visitation record but have no information.

Tabular population

This is not necessarily equal to the headcount population as some residents were counted based on information from neighbours or landlords but were not interviewed and are therefore excluded from the tabular population.

This refers to the total number of residents who were interviewed and includes those whose response was "Don't Know/Not Stated"(DK/NS).

Head of household

The only criterion used to define a head is that that person should be a responsible adult. A member of the household is designated as the head primarily to establish the relationship of household members. Every household must have a member designated as head for the purpose of the Census. In a single family household, the father or mother is usually designated the head. It does not matter which one is designated the head. In a one-person household, that person is the head. In a household where members are unrelated, the head is that person whom the other members designate as the head of household for the purpose of the Census.

Household members

The basic rule is to include everyone in the household (defined above) who has been living in the Turks and Caicos Islands for at least 6 months prior to the week January 25 , 2012, or INTENDS to live here for 6 months or more. All persons who satisfy this criterion are included as household members regardless of their status in the Turks and Caicos Islands or their age.

Also included are:

- family members seeking medical attention abroad who have the intention of returning to their home in the Turks and Caicos Islands;
- family members working on another island who return home daily, in another country or at sea for less than six months if the present address is considered their "home";
- Persons away on vacation or business for less than 6 months;
- domestics, boarders or lodgers living in the Turks and Caicos Islands for at least 6 months; or
- "visitors" from elsewhere in the Turks and Caicos Islands, who currently consider the address their "home" for at least 6 months (e.g. relatives).

Persons excluded from the household count were those who were:

- family members working and living away from the address and consider elsewhere their "home";
- separated spouses visiting only occasionally who have a "home" elsewhere;
- students at school overseas, if they do not intend to return to live in the Turks and Caicos Islands.;
- persons in an institution (e.g. prison) for the past 6 months or likely to remain in an institution for at least 6 months;
- daily helpers and domestics **NOT** living in (these individuals are a separate household unless they live in an "annex" to the main dwelling **AND** share at least one meal a day); or
- visitors **not** intending to live at least 6 months in the Turks and Caicos Islands.

Institution

Persons who have resided at an institution for six or more months will be counted as a part of the institutional population.

Residential homes for special groups of people such as prisons, infirmaries, mental asylums, dormitories etc. are referred to as institutions.

Marital and Union Status

Marital status refers to **legal** marital status which can only be one of the five choices: never married, married, divorced, separation from a spouse, or widowed. This is distinct from **union status** which takes into consideration living arrangements with a spouse or partner regardless of marital status.

A person who is legally married, but is separated from his/her spouse and was **granted legal separation by the Courts**, is coded as 'separated.'

A person who is legally married, but is separated from his/her spouse and has taken **no legal action** to separate, is coded at 'married.'

A person who has never been married but is living in union with a partner, no matter the age or the number of years living with the same partner, is marked as 'never married.'

Union status refers to spouses' or partners' living arrangements. Therefore, a person who is legally married could be living away from a spouse.

Resident

This refers to any person staying in the Turks and Caicos Islands or intending to stay for at least six months. This definition of “resident” in the census context has no legal implication whatsoever. Only the length of stay of a person defines the census resident population. Citizenship or status is not part of the definition.

Sex ratio

This refers to the number of females per 100 males.

Labour Force

The labour force is comprised of all persons aged 15 years or over who were engaged in any form of economic activity for at least one hour during the week proceeding January 25th, 2012, or who were willing and able to be engaged in producing economic goods and services. Also included are all those persons who were temporarily absent from work during the week proceeding January 25th. Hence, the labour force is made up of all those persons who either had jobs (the Employed), or those who did not have jobs but were willing and able to work (the Unemployed).

Disability

Generally, a disability is the inability or great difficulty in performing one or more major life activities in the person’s current social environment because of impairment, e.g., missing, damaged or weakened body part or function.

Disability is not a specific medical diagnosis such as spinal cord injury, cerebral palsy, or intellectual difficulties. While this information is often important in a medical context, it is normally not what arises when you come into contact with someone with a disability. It is also important to recognize that, by changing the environment the person can be facilitated to increase their performance or, on the contrary, impeded from activities that they could perform in a more enabling environment.

Not everyone that wears spectacles (glasses) has sight impairment. Those who have a limb in a cast due to a broken bone are not classified as having upper or lower limb impairment if the injury does not leave them disabled. Those with chronic depression and other forms of mental disorder are classified as having a mental illness.

Employed

An 'employed' person is one who is 15 years or older and engaged in some form of economic activity regardless of the type of work. This could be an active partnership in a business, some type of self-employment, or working a couple of hours per week for someone.

Any economic activity, even for one hour during the Reference Week (week proceeding January 25th, 2012), is interpreted as work.

Fulltime work is 30 or more hours per week and part time is less than 30 hours. Persons who work in their own home doing household chores are not considered 'employed' nor are those who perform volunteer work. However persons engaged in an apprenticeship or internship are classified as 'employed'.

Also included as employed persons are those who:

- (a) worked at anything for wages or salary, at time-rates, at piece rates, on commission, for tips, for board and lodging or for any other type of payment in kind (the employee);
- (b) worked for profit or fees in his/her own business or on his/her own farm (the self-employed);
- (c) worked without money, wages or salary, at task (other than housework) which contributed to the operation of farm or business owned and operated for profit in most cases by some member of his/her family--related by blood or marriage (the unpaid family worker);
- (d) Spent some time in the operation of a business or profession even though no sales were made or professional services rendered, such as doctor or lawyer spending time in his/her office waiting for clients.

Excluded from the employed are those who:

- (a) worked without money or pay for a relative or other person at tasks which did not contribute to the operation of a farm or of a business (e.g. housework, gardening, cutting the lawn, other odd jobs around the house or yard);
- (c) worked without pay, either in cash or in kind, as a VOLUNTEER WORKER for service organization activities such as Salvation Army or The Red Cross or;
- (b) Worked without pay assisting a relative or friend in his/her duties as an employee (e.g. accompanying a truck driver).

OECD Definition of The Unemployed

The unemployed comprise all persons above a specified age who during the reference period were:

- without work, that is, were not in paid employment or self-employment during the reference period;

- currently available for work, that is, were available for paid employment or self-employment during the reference period; and

- seeking work, that is, had taken specific steps in a specified recent period to seek paid employment or self-employment.

The specific steps may include registration at a public or private employment exchange; application to

employers; checking at worksites, farms, factory gates, market or other assembly places; placing or answering newspaper advertisements; seeking assistance of friends or relatives; looking for land, building, machinery or equipment to establish own enterprise; arranging for financial resources; applying for permits and licenses, etc.

POPULATION CHANGE AMONG THE ISLANDS

The main inhabited islands of the TCI archipelago up until the 2012 census was Grand Turk, Salt Cay, South Caicos, Ambergris Cay, Middle Caicos, North Caicos, Providenciales, Parrot Cay and Pine cay. Pine Cay is captured under North Caicos, as the resident population of this island is relatively small. Ambergris Cay is also captured under South Caicos, as the resident population is relatively small. Given the varying sizes and differences in the physical environment and development that have taken place, it is not surprising that there is considerable variation in the size of the population among the islands.

A comparison with the 2001 Census figures shows that the population increased by 11,572 persons or 58.2 percent, and grew at an average annual rate of approximately five (5) per cent. If the population were to continue to grow at this rate, it would double its size by the year 2027.

A review of table 1 shows that Providenciales remained virtually undifferentiated in its population size from its sister islands up until 1980, after which it dominated all others in 1990, and by 2001 its population was more than three times that of its nearest rival. A similar trend can be seen in the preliminary results of the 2012 census which has a population of more than four times that of its nearest rival (Grand Turk). Except for North Caicos, the administrative capital of Grand Turk had more than twice as many people as the other islands between 1960 and 1980, after which it ceded its distinction as the most populous island to Providenciales. Also, it can be seen that in the census period since 1960, Providenciales and Grand Turk were the only two islands that have never had a net loss of people. The 2012 census data revealed that while Grand Turk continued its growth, its rate of growth has slowed markedly since 1980 when compared to Providenciales.

Overall, from the data presented it is evident that the Turks and Caicos Islands population is growing at a much faster rate than that experienced prior to 1990....but definitely in alignment with our expectations.....considering the level of development that has taken place since the last census.

GEOGRAPHIC DISTRIBUTION AND POPULATION GROWTH

Preliminary counts from the Turks and Caicos 2012 Population and Housing Census shows that the largest proportion of the Population reside in Providenciales (See Table 1). The total population of the Island of Providenciales increased by 82.5% and represents approximately 75.6% of the Turks and Caicos Islands population. Approximately 15.4% or 4,831 persons of Census 2012's estimated population lives on Grand Turk when compared to 20% or 3,976 persons in 2001, an increase of 21.5% over the inter-censal period. North Caicos, with a population share of 4.2% recorded in 2012 saw a decline in population share from 6.8% in 2001. The population of South Caicos fell to 3.6% of the total population in 2012 down from 5.3% in 2001. The Population Census of 2012, therefore, showed clearly

that there has been substantial movement of the population away from Middle Caicos and North Caicos and into Providenciales. It also shows that there have been substantial movements from other countries to Providenciales

The next most populated island was Middle Caicos with a population share of 0.5% in 2012 down from 1.5% in 2001. This represented a decline of 44.2% in the population of the island from 301 in 2001 to 168 in 2012. The least populated Island of the Turks and Caicos Islands in 2012 was the Island of Salt Cay. This Island's proportion of the estimated population of the Turks and Caicos Islands was 0.3%.

Overall the Island of Providenciales which accounted for 75.6 percent of the estimated population of the Turks and Caicos in 2012 saw a change of 10.1% in its share of the total population from 2001. All of the other Islands with the exception of Parrot Cay recorded a decrease in their share of the total population.

The Island of Parrot Cay experienced the greatest percentage increase in population. In 2012, Parrot Cay's population was 125.9% more than it was in 2001. This means that, since 2001, Parrot Cay's population has increased by an average of over 11% percent a year. This increase represents an additional 73 persons who joined the ranks of the population of the island. Among the Turks and Caicos inhabited Islands, four islands encountered household population percentage expansions. In order of significance these are Parrot Cay (125.9%), Providenciales (82.5%), Grand Turk (21.5%) and South Caicos (7.1%). Of the Islands experiencing declines in the size of the population, the largest population outflow was experienced by Middle Caicos, a decline of (44.2%) followed by Salt Cay (10%) and North Caicos (2.6%).

SEX RATIO

The sex ratio is the number of males per one hundred females. A sex ratio less than 100 indicates that there are fewer males than females. According to the 2012 final census results, there were 16,037 males (51%) and 15,421 females (49%). This indicates that the sex ratio of males to females is 104. This is in contrast to the 2001 census results which showed that (49.8%) of the population was male and (50.2%) female. The sex ratio of male to female at that time was 99. The change in the sex ratio can be explained by the make-up of the immigrant population. During the intercensal period, the number of males and females grew by 62% and 54.4%, respectively. As stated earlier there were more males (51%) than females (49%) in the population, and this was evident in on all islands except in Grand Turk.

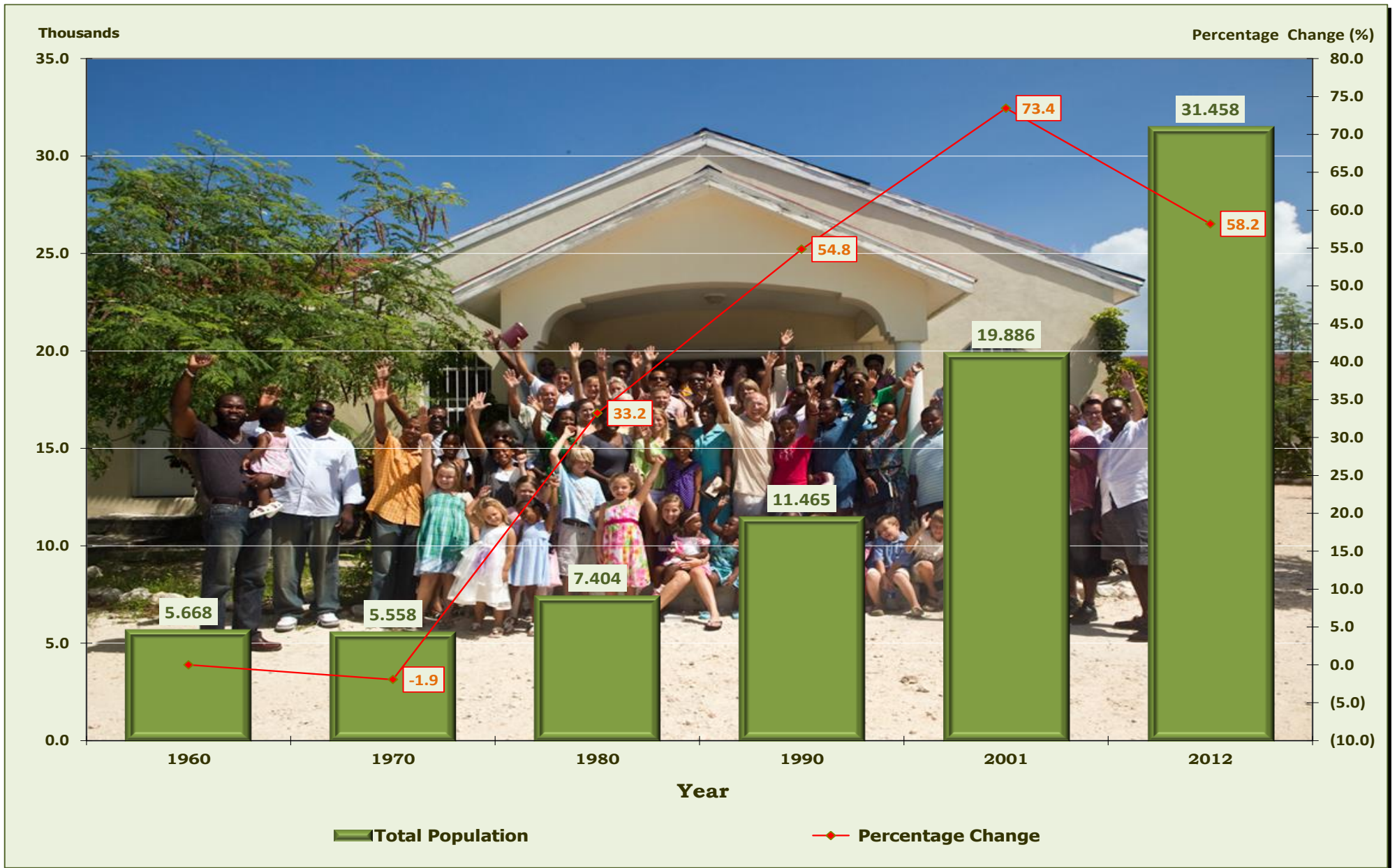
Table 1.1.1 Population by Island for the Census Years: 1960 - 2012

| Island | 1960 | 1970 | 1980 | 1990 | 2001 | 2012 | <i>Percentage Change 2001-2012</i> |
|----------------|--------------|--------------|--------------|---------------|---------------|---------------|--|
| Salt Cay | 448 | 334 | 284 | 208 | 120 | 108 | (10.0) |
| Grand Turk | 2,180 | 2,287 | 3,089 | 3,691 | 3,976 | 4,831 | 21.5 |
| South Caicos | 840 | 1,018 | 1,380 | 1,198 | 1,063 | 1,139 | 7.1 |
| Middle Caicos | 532 | 362 | 396 | 272 | 301 | 168 | (44.2) |
| North Caicos | 1,150 | 999 | 1,278 | 1,275 | 1,347 | 1,312 | (2.6) |
| Parrot Cay | | | | | 58 | 131 | 125.9 |
| Providenciales | 518 | 558 | 977 | 4,821 | 13,021 | 23,769 | 82.5 |
| Total | 5,668 | 5,558 | 7,413 | 11,465 | 19,886 | 31,458 | 58.2 |

Table 1.1.2. Percentage Distribution of the Population: 1960 – 2012.

| Island | 1960 | 1970 | 1980 | 1990 | 2001 | 2012 |
|-----------------------|--------------|--------------|--------------|--------------|--------------|--------------|
| Salt Cay | 7.9 | 6.0 | 3.8 | 1.8 | 0.6 | 0.3 |
| Grand Turk | 38.5 | 41.1 | 41.7 | 32.2 | 20.0 | 15.4 |
| South Caicos | 14.8 | 18.3 | 18.6 | 10.4 | 5.3 | 3.6 |
| Middle Caicos | 9.4 | 6.5 | 5.3 | 2.4 | 1.5 | 0.5 |
| North Caicos | 20.3 | 18.0 | 17.3 | 11.1 | 6.8 | 4.2 |
| Parrot Cay | 0.0 | - | - | - | 0.3 | 0.4 |
| Providenciales | 9.1 | 10.0 | 13.2 | 42.0 | 65.5 | 75.6 |
| Total | 100.0 | 100.0 | 100.0 | 100.0 | 100.0 | 100.0 |

Chart 1.1.1 Percentage Changes in the Population for the Census Years: 1960 - 2012



**Table 1.1.3. Total Population By Island, Locality and Sex:
2012 Versus 2001**

| | | Male | | Female | | Total Population | | Percentage Change (%) |
|-------------------------|--|--------------|---------------|--------------|---------------|------------------|---------------|-----------------------|
| Island | Locality | 2001 | 2012 | 2001 | 2012 | 2001 | 2012 | 2001-2012 |
| TURKS AND CAICOS | | 9,897 | 16,037 | 9,989 | 15,421 | 19,886 | 31,458 | 58.2 |
| Grand Turk | | 1,855 | 2,325 | 2,121 | 2,506 | 3,976 | 4,831 | 21.5 |
| | Great Salina | 96 | 172 | 90 | 187 | 186 | 359 | 93.0 |
| | Back Salina | 531 | 604 | 644 | 661 | 1,175 | 1265 | 7.7 |
| | Breezy Brae | 180 | 338 | 197 | 413 | 377 | 751 | 99.2 |
| | Cockburn Town & Hawks Nest | 54 | 76 | 65 | 57 | 119 | 133 | 11.8 |
| | North Creek | 103 | 126 | 126 | 144 | 229 | 270 | 17.9 |
| | Over Back | 281 | 319 | 291 | 329 | 572 | 648 | 13.3 |
| | Palm Grove | 267 | 323 | 321 | 341 | 588 | 664 | 12.9 |
| | The Ridge | 105 | 84 | 129 | 92 | 234 | 176 | (24.8) |
| | Waterloo | 7 | 38 | 8 | 17 | 15 | 55 | 266.7 |
| | West Road | 231 | 245 | 250 | 265 | 481 | 510 | 6.0 |
| Salt Cay | | 59 | 56 | 61 | 52 | 120 | 108 | (10.0) |
| South Caicos | | 531 | 594 | 532 | 545 | 1,063 | 1,139 | 7.1 |
| Middle Caicos | | 145 | 85 | 156 | 83 | 301 | 168 | (44.2) |
| North Caicos | | 676 | 721 | 671 | 591 | 1,347 | 1,312 | (2.6) |
| Parrot Cay | | 41 | 91 | 17 | 40 | 58 | 131 | 125.9 |
| Providenciales | | 6,590 | 12,165 | 6,431 | 11,604 | 13,021 | 23,769 | 82.5 |
| | The Bight | 907 | 1186 | 789 | 1102 | 1,696 | 2,288 | 34.9 |
| | Blue Hills | 436 | 601 | 460 | 555 | 896 | 1156 | 29.0 |
| | Blue Mountains, Cherokee Rd., Thompson Cove | 179 | 223 | 164 | 193 | 343 | 416 | 21.3 |
| | Chalk Sound | 266 | 317 | 262 | 368 | 528 | 685 | 29.7 |
| | Discovery Bay, Cheshire Hall and Cooper Jack | 519 | 880 | 522 | 821 | 1,041 | 1,701 | 63.4 |
| | Downtown | 128 | 305 | 122 | 331 | 250 | 636 | 154.4 |
| | Five Cays | 992 | 1856 | 971 | 1736 | 1,963 | 3,592 | 83.0 |
| | Grace Bay | 112 | 138 | 54 | 104 | 166 | 242 | 45.8 |
| | Honda Road | 867 | 2243 | 893 | 2203 | 1,760 | 4,446 | 152.6 |
| | Juba | 182 | 524 | 181 | 543 | 363 | 1067 | 193.9 |
| | Kew Town | 517 | 744 | 507 | 733 | 1,024 | 1,477 | 44.2 |
| | Leeward | 430 | 816 | 448 | 783 | 878 | 1599 | 82.1 |
| | Long Bay | 165 | 447 | 169 | 488 | 334 | 935 | 179.9 |
| | Turtle Cove and Richmond Hill | 253 | 290 | 219 | 253 | 472 | 543 | 15.0 |
| | Wheeland | 637 | 1233 | 670 | 1284 | 1,307 | 2,517 | 92.6 |
| | Unaccounted | | 362 | | 107 | | 469 | |

Table 1.1.4: Total Population by Single Age, Sex and Status, 2012.

| Age | Status | | | | | | | | | | | |
|-----|----------|--------|------------|--------------|--------|------------|------------|--------|------------|-------|--------|------------|
| | Belonger | | | Non-belonger | | | Not Stated | | | Total | | |
| | Male | Female | Not Stated | Male | Female | Not Stated | Male | Female | Not Stated | Male | Female | Not Stated |
| < 1 | 31 | 29 | 0 | 9 | 12 | 0 | 0 | 1 | 0 | 40 | 42 | 0 |
| 1 | 38 | 34 | 0 | 14 | 15 | 0 | 2 | 2 | 0 | 54 | 51 | 0 |
| 2 | 42 | 47 | 0 | 15 | 15 | 0 | 1 | 1 | 0 | 58 | 63 | 0 |
| 3 | 45 | 45 | 0 | 12 | 8 | 0 | 1 | 0 | 0 | 58 | 53 | 0 |
| 4 | 43 | 31 | 0 | 13 | 15 | 0 | 2 | 2 | 0 | 58 | 48 | 0 |
| 5 | 34 | 44 | 1 | 15 | 12 | 0 | 0 | 2 | 0 | 49 | 58 | 1 |
| 6 | 37 | 27 | 1 | 7 | 9 | 0 | 0 | 0 | 0 | 44 | 36 | 1 |
| 7 | 34 | 41 | 1 | 12 | 9 | 0 | 0 | 3 | 0 | 46 | 53 | 1 |
| 8 | 34 | 35 | 0 | 9 | 17 | 0 | 1 | 1 | 0 | 44 | 53 | 0 |
| 9 | 44 | 39 | 1 | 13 | 23 | 0 | 1 | 0 | 0 | 58 | 62 | 1 |
| 10 | 37 | 34 | 2 | 9 | 17 | 0 | 1 | 0 | 0 | 47 | 51 | 2 |
| 11 | 43 | 43 | 0 | 17 | 15 | 0 | 5 | 0 | 0 | 65 | 58 | 0 |
| 12 | 38 | 38 | 0 | 10 | 15 | 0 | 1 | 1 | 0 | 49 | 54 | 0 |
| 13 | 34 | 53 | 2 | 12 | 14 | 0 | 1 | 2 | 0 | 47 | 69 | 2 |
| 14 | 42 | 41 | 0 | 14 | 9 | 0 | 2 | 1 | 0 | 58 | 51 | 0 |
| 15 | 39 | 51 | 0 | 12 | 8 | 0 | 1 | 0 | 0 | 52 | 59 | 0 |
| 16 | 43 | 41 | 0 | 13 | 18 | 0 | 0 | 1 | 0 | 56 | 60 | 0 |
| 17 | 27 | 42 | 0 | 10 | 14 | 0 | 0 | 1 | 0 | 37 | 57 | 0 |
| 18 | 26 | 30 | 1 | 9 | 10 | 0 | 0 | 0 | 0 | 35 | 40 | 1 |
| 19 | 28 | 34 | 0 | 5 | 5 | 0 | 1 | 0 | 0 | 34 | 39 | 0 |
| 20 | 30 | 17 | 0 | 4 | 4 | 0 | 0 | 0 | 0 | 34 | 21 | 0 |
| 21 | 21 | 32 | 0 | 8 | 7 | 0 | 1 | 0 | 0 | 30 | 39 | 0 |
| 22 | 34 | 24 | 0 | 5 | 14 | 0 | 0 | 2 | 0 | 39 | 40 | 0 |
| 23 | 34 | 24 | 1 | 10 | 13 | 0 | 4 | 2 | 0 | 48 | 39 | 1 |
| 24 | 17 | 20 | 0 | 18 | 13 | 0 | 0 | 0 | 0 | 35 | 33 | 0 |
| 25 | 32 | 29 | 0 | 23 | 20 | 0 | 1 | 0 | 0 | 56 | 49 | 0 |
| 26 | 20 | 20 | 0 | 22 | 38 | 0 | 0 | 2 | 0 | 42 | 60 | 0 |
| 27 | 23 | 25 | 0 | 34 | 24 | 1 | 0 | 1 | 0 | 57 | 50 | 1 |
| 28 | 20 | 13 | 0 | 36 | 37 | 0 | 2 | 1 | 0 | 58 | 51 | 0 |
| 29 | 29 | 16 | 0 | 35 | 37 | 0 | 2 | 3 | 0 | 66 | 56 | 0 |
| 30 | 26 | 27 | 0 | 45 | 45 | 0 | 1 | 1 | 0 | 72 | 73 | 0 |
| 31 | 24 | 34 | 0 | 43 | 41 | 0 | 2 | 0 | 0 | 69 | 75 | 0 |
| 32 | 23 | 19 | 1 | 47 | 42 | 1 | 2 | 1 | 0 | 72 | 62 | 2 |
| 33 | 26 | 30 | 0 | 58 | 48 | 1 | 2 | 2 | 0 | 86 | 80 | 1 |
| 34 | 26 | 27 | 0 | 44 | 56 | 0 | 5 | 0 | 0 | 75 | 83 | 0 |
| 35 | 24 | 21 | 0 | 50 | 39 | 0 | 5 | 3 | 0 | 79 | 63 | 0 |
| 36 | 22 | 20 | 0 | 54 | 32 | 1 | 6 | 1 | 0 | 82 | 53 | 1 |
| 37 | 31 | 19 | 0 | 50 | 50 | 0 | 3 | 1 | 0 | 84 | 70 | 0 |
| 38 | 28 | 29 | 0 | 60 | 44 | 0 | 7 | 3 | 0 | 95 | 76 | 0 |
| 39 | 21 | 35 | 0 | 51 | 45 | 0 | 2 | 3 | 0 | 74 | 83 | 0 |

Table 1.1.4: Total Population by Single Age, Sex and Status, 2012 (Cont'd)

| Age | Status | | | | | | | | | Total | | |
|-----|----------|--------|------------|--------------|--------|------------|------------|--------|------------|-------|--------|------------|
| | Belonger | | | Non-belonger | | | Not Stated | | | Male | Female | Not Stated |
| | Male | Female | Not Stated | Male | Female | Not Stated | Male | Female | Not Stated | | | |
| 39 | 21 | 35 | 0 | 51 | 45 | 0 | 2 | 3 | 0 | 74 | 83 | 0 |
| 40 | 22 | 29 | 0 | 42 | 36 | 0 | 1 | 1 | 0 | 65 | 66 | 0 |
| 41 | 38 | 32 | 0 | 33 | 34 | 0 | 1 | 1 | 0 | 72 | 67 | 0 |
| 42 | 35 | 18 | 0 | 56 | 33 | 1 | 2 | 4 | 0 | 93 | 55 | 1 |
| 43 | 25 | 34 | 0 | 58 | 26 | 0 | 4 | 0 | 0 | 87 | 60 | 0 |
| 44 | 23 | 21 | 1 | 36 | 29 | 0 | 2 | 0 | 0 | 61 | 50 | 1 |
| 45 | 25 | 35 | 1 | 25 | 40 | 0 | 0 | 1 | 0 | 50 | 76 | 1 |
| 46 | 25 | 23 | 0 | 35 | 22 | 0 | 2 | 1 | 0 | 62 | 46 | 0 |
| 47 | 22 | 27 | 0 | 21 | 20 | 0 | 1 | 3 | 0 | 44 | 50 | 0 |
| 48 | 31 | 39 | 0 | 36 | 32 | 0 | 1 | 1 | 0 | 68 | 72 | 0 |
| 49 | 37 | 25 | 0 | 17 | 20 | 0 | 2 | 1 | 0 | 56 | 46 | 0 |
| 50 | 38 | 28 | 0 | 34 | 23 | 0 | 2 | 1 | 0 | 74 | 52 | 0 |
| 51 | 24 | 27 | 0 | 19 | 18 | 0 | 2 | 2 | 0 | 45 | 47 | 0 |
| 52 | 27 | 29 | 0 | 31 | 14 | 0 | 1 | 0 | 0 | 59 | 43 | 0 |
| 53 | 29 | 39 | 0 | 23 | 6 | 0 | 1 | 1 | 0 | 53 | 46 | 0 |
| 54 | 21 | 21 | 0 | 14 | 14 | 0 | 2 | 5 | 0 | 37 | 40 | 0 |
| 55 | 23 | 23 | 0 | 10 | 16 | 0 | 3 | 0 | 0 | 36 | 39 | 0 |
| 56 | 26 | 21 | 0 | 8 | 12 | 0 | 2 | 0 | 0 | 36 | 33 | 0 |
| 57 | 21 | 27 | 0 | 9 | 11 | 0 | 3 | 0 | 0 | 33 | 38 | 0 |
| 58 | 26 | 24 | 0 | 8 | 8 | 0 | 1 | 0 | 0 | 35 | 32 | 0 |
| 59 | 26 | 29 | 0 | 7 | 10 | 0 | 3 | 1 | 0 | 36 | 40 | 0 |
| 60 | 24 | 30 | 0 | 9 | 4 | 0 | 1 | 1 | 0 | 34 | 35 | 0 |
| 61 | 17 | 25 | 0 | 10 | 9 | 0 | 2 | 1 | 0 | 29 | 35 | 0 |
| 62 | 26 | 23 | 0 | 4 | 2 | 0 | 0 | 2 | 0 | 30 | 27 | 0 |
| 63 | 16 | 25 | 0 | 1 | 1 | 0 | 0 | 1 | 0 | 17 | 27 | 0 |
| 64 | 17 | 8 | 0 | 3 | 3 | 0 | 0 | 1 | 0 | 20 | 12 | 0 |
| 65 | 20 | 15 | 0 | 3 | 7 | 0 | 0 | 0 | 0 | 23 | 22 | 0 |
| 66 | 16 | 14 | 0 | 2 | 0 | 0 | 0 | 2 | 0 | 18 | 16 | 0 |
| 67 | 10 | 9 | 0 | 3 | 2 | 0 | 0 | 1 | 0 | 13 | 12 | 0 |
| 68 | 15 | 19 | 0 | 3 | 4 | 0 | 0 | 0 | 0 | 18 | 23 | 0 |
| 69 | 12 | 7 | 0 | 1 | 2 | 0 | 0 | 2 | 0 | 13 | 11 | 0 |
| 70 | 8 | 9 | 0 | 2 | 1 | 0 | 0 | 0 | 0 | 10 | 10 | 0 |
| 71 | 8 | 14 | 0 | 1 | 1 | 0 | 1 | 0 | 0 | 10 | 15 | 0 |
| 72 | 5 | 8 | 0 | 2 | 1 | 0 | 1 | 1 | 0 | 8 | 10 | 0 |
| 73 | 9 | 12 | 0 | 0 | 0 | 0 | 0 | 0 | 0 | 9 | 12 | 0 |
| 74 | 6 | 9 | 0 | 1 | 2 | 0 | 0 | 0 | 0 | 7 | 11 | 0 |
| 75 | 6 | 13 | 0 | 0 | 0 | 0 | 0 | 0 | 0 | 6 | 13 | 0 |
| 76 | 8 | 6 | 0 | 0 | 1 | 0 | 0 | 0 | 0 | 8 | 7 | 0 |

Table 1.1.4: Total Population by Single Age, Sex and Status, 2012 (Cont'd)

| Age | Status | | | | | | | | | Total | | |
|--------------|-------------|-------------|------------|--------------|-------------|------------|------------|-----------|------------|-------------|-------------|------------|
| | Belonger | | | Non-belonger | | | Not Stated | | | Male | Female | Not Stated |
| | Male | Female | Not Stated | Male | Female | Not Stated | Male | Female | Not Stated | | | |
| 77 | 11 | 8 | 0 | 0 | 0 | 0 | 1 | 1 | 0 | 12 | 9 | 0 |
| 78 | 9 | 14 | 0 | 2 | 0 | 0 | 0 | 1 | 0 | 11 | 15 | 0 |
| 79 | 11 | 7 | 0 | 0 | 1 | 0 | 1 | 0 | 0 | 12 | 8 | 0 |
| 80 | 7 | 6 | 0 | 1 | 0 | 0 | 2 | 0 | 0 | 10 | 6 | 0 |
| 81 | 11 | 4 | 0 | 0 | 1 | 0 | 0 | 1 | 0 | 11 | 6 | 0 |
| 82 | 3 | 5 | 0 | 0 | 0 | 0 | 0 | 0 | 0 | 3 | 5 | 0 |
| 83 | 6 | 17 | 0 | 0 | 0 | 0 | 0 | 1 | 0 | 6 | 18 | 0 |
| 84 | 5 | 9 | 0 | 0 | 0 | 0 | 1 | 2 | 0 | 6 | 11 | 0 |
| 85+ | 24 | 37 | 0 | 0 | 1 | 0 | 0 | 3 | 0 | 24 | 41 | 0 |
| Not Stated | 2 | 4 | 0 | 5 | 3 | 0 | 3 | 1 | 6 | 10 | 8 | 6 |
| Total | 2106 | 2168 | 13 | 1502 | 1379 | 5 | 114 | 89 | 6 | 3722 | 3636 | 24 |

Table 1.1.5: Total Population by Age Grouping, Sex & Status, 2012.

| Age | Belonger | | | Non-Belonger | | | Not Stated | | | Total | | |
|------------|----------|--------|------------|--------------|--------|------------|------------|--------|------------|-------|--------|------------|
| | Male | Female | Not Stated | Male | Female | Not Stated | Male | Female | Not Stated | Male | Female | Not Stated |
| <1 | 32 | 27 | 0 | 8 | 15 | 0 | 0 | 0 | 0 | 40 | 42 | 0 |
| 1-4 | 169 | 153 | 0 | 57 | 60 | 0 | 2 | 2 | 0 | 228 | 215 | 0 |
| 5-9 | 184 | 193 | 2 | 56 | 68 | 1 | 1 | 1 | 1 | 241 | 262 | 4 |
| 10-14 | 196 | 221 | 4 | 68 | 60 | 0 | 2 | 2 | 0 | 266 | 283 | 4 |
| 15-19 | 169 | 205 | 1 | 44 | 50 | 0 | 1 | 0 | 0 | 214 | 255 | 1 |
| 20-24 | 141 | 122 | 1 | 44 | 50 | 0 | 1 | 0 | 0 | 186 | 172 | 1 |
| 25-29 | 128 | 112 | 0 | 150 | 154 | 1 | 1 | 0 | 0 | 279 | 266 | 1 |
| 30-34 | 132 | 136 | 1 | 242 | 236 | 2 | 0 | 1 | 0 | 374 | 373 | 3 |
| 35-39 | 131 | 124 | 0 | 283 | 219 | 1 | 0 | 2 | 0 | 414 | 345 | 1 |
| 40-44 | 149 | 142 | 1 | 229 | 155 | 1 | 0 | 1 | 0 | 378 | 298 | 2 |
| 45-49 | 144 | 158 | 1 | 133 | 132 | 0 | 3 | 0 | 0 | 280 | 290 | 1 |
| 50-54 | 158 | 147 | 0 | 110 | 81 | 0 | 0 | 0 | 0 | 268 | 228 | 0 |
| 55-59 | 124 | 122 | 0 | 52 | 60 | 0 | 0 | 0 | 0 | 176 | 182 | 0 |
| 60-64 | 105 | 116 | 0 | 25 | 19 | 0 | 0 | 1 | 0 | 130 | 136 | 0 |
| 65-69 | 73 | 74 | 0 | 12 | 10 | 0 | 0 | 0 | 0 | 85 | 84 | 0 |
| 70-74 | 40 | 53 | 0 | 4 | 5 | 0 | 0 | 0 | 0 | 44 | 58 | 0 |
| 75-79 | 47 | 50 | 0 | 2 | 2 | 0 | 0 | 0 | 0 | 49 | 52 | 0 |
| 80-84 | 35 | 45 | 0 | 1 | 1 | 0 | 0 | 0 | 0 | 36 | 46 | 0 |
| 85+ | 23 | 41 | 0 | 0 | 0 | 0 | 1 | 0 | 0 | 24 | 41 | 0 |
| Not Stated | 3 | 6 | 0 | 3 | 2 | 0 | 4 | 0 | 6 | 10 | 8 | 6 |
| Total | 2183 | 2247 | 11 | 1523 | 1379 | 6 | 16 | 10 | 7 | 3722 | 3636 | 24 |

Table 1.1.6: Total Population by Age Grouping and Sex, 2012

| Age | Male | Female | Not Stated | Total | % Male | % Female | % Total |
|--------------|-------------|-------------|------------|-------------|--------------|--------------|--------------|
| <1 | 40 | 42 | 0 | 82 | 1.1 | 1.2 | 1.1 |
| 1-4 | 228 | 215 | 0 | 443 | 6.1 | 5.9 | 6.0 |
| 5-9 | 241 | 262 | 4 | 507 | 6.5 | 7.2 | 6.9 |
| 10-14 | 266 | 283 | 4 | 553 | 7.1 | 7.8 | 7.5 |
| 15-19 | 214 | 255 | 1 | 470 | 5.7 | 7.0 | 6.4 |
| 20-24 | 186 | 172 | 1 | 359 | 5.0 | 4.7 | 4.9 |
| 25-29 | 279 | 266 | 1 | 546 | 7.5 | 7.3 | 7.4 |
| 30-34 | 374 | 373 | 3 | 750 | 10.0 | 10.3 | 10.2 |
| 35-39 | 414 | 345 | 1 | 760 | 11.1 | 9.5 | 10.3 |
| 40-44 | 378 | 298 | 2 | 678 | 10.2 | 8.2 | 9.2 |
| 45-49 | 280 | 290 | 1 | 571 | 7.5 | 8.0 | 7.7 |
| 50-54 | 268 | 228 | 0 | 496 | 7.2 | 6.3 | 6.7 |
| 55-59 | 176 | 182 | 0 | 358 | 4.7 | 5.0 | 4.8 |
| 60-64 | 130 | 136 | 0 | 266 | 3.5 | 3.7 | 3.6 |
| 65-69 | 85 | 84 | 0 | 169 | 2.3 | 2.3 | 2.3 |
| 70-74 | 44 | 58 | 0 | 102 | 1.2 | 1.6 | 1.4 |
| 75-79 | 49 | 52 | 0 | 101 | 1.3 | 1.4 | 1.4 |
| 80-84 | 36 | 46 | 0 | 82 | 1.0 | 1.3 | 1.1 |
| 85+ | 24 | 41 | 0 | 65 | 0.6 | 1.1 | 0.9 |
| Not Stated | 10 | 8 | 6 | 24 | 0.3 | 0.2 | 0.3 |
| Total | 3722 | 3636 | 24 | 7382 | 100.0 | 100.0 | 100.0 |



Table 1.1.7: Population by Ethnic, Racial or National Group, 2012.

| Ethnic, Racial or National Group | Number of Persons | Percentage (%) |
|----------------------------------|-------------------|----------------|
| Black/Negro/African | 6270 | 84.9 |
| East Indian | 31 | 0.4 |
| Pilipino | 76 | 1 |
| Mixed | 178 | 2.4 |
| Hispanic | 437 | 5.9 |
| White/Caucasian | 208 | 2.8 |
| Other | 164 | 2.2 |
| Not Stated | 18 | 0.2 |
| Total | 7382 | 100 |



Table 1.1.8: Belonger Breakdown by Country of Birth, 2012.

| Country of Birth | Resident Status | Percentage (%) |
|---------------------------------|-----------------|----------------|
| | Belonger | |
| Turks and Caicos Islands | 3370 | 75.9 |
| Grand Turk & Salt Cay | 2263 | 51.0 |
| Providenciales | 242 | 5.3 |
| North Caicos | 401 | 9.1 |
| South Caicos | 329 | 7.4 |
| Middle Caicos | 141 | 3.2 |
| Bahamas | 224 | 5.6 |
| Dominican Republic | 61 | 1.6 |
| Haiti | 219 | 5.4 |
| USA | 289 | 7.8 |
| Other Country | 133 | 3.4 |
| Not Stated | 10 | 0.2 |
| Total | 4441 | 100.0 |



- Excludes Providenciales

Table 1.1.9: Ways in Which Belongership was Acquired by Sex, 2012.

| How did you Acquire Belongership | Sex | | | | | |
|----------------------------------|-------------|-------------|------------|------------|------------|----------------|
| | Male | Female | Not Stated | Male (%) | Female (%) | Not Stated (%) |
| Born in TCI to Belonger | 1545 | 1596 | 5 | 70.8 | 71.0 | 55.6 |
| Born in TCI to Non-Belonger | 97 | 97 | 1 | 4.4 | 4.3 | 11.1 |
| Born overseas to a Belonger | 285 | 272 | 3 | 13.1 | 12.1 | 33.3 |
| Adopted by a Belonger | 18 | 17 | 0 | 0.8 | 0.8 | 0.0 |
| Spouse of a Belonger | 45 | 74 | 0 | 2.1 | 3.3 | 0.0 |
| Dependent Child | 26 | 34 | 0 | 1.2 | 1.5 | 0.0 |
| Granted on other grounds | 130 | 128 | 0 | 6.0 | 5.7 | 0.0 |
| Not Stated | 37 | 31 | 0 | 1.7 | 1.4 | 0.0 |
| Total | 2183 | 2249 | 9 | 100 | 100 | 100 |

Excludes Providenciales

Table 1.1.10: Breakdown of Population by Status, 2012.

| Status | Total | Percentage (%) |
|---------------------------------------|-------|----------------|
| Belonger | 4441 | 60.2 |
| Spouse of belonger but not a belonger | 98 | 1.3 |
| PRC Holder | 164 | 2.2 |
| PRC's spouse or dependent child | 48 | 0.7 |
| Government contract or diplomat | 178 | 2.4 |
| Work permit (limited time) | 1673 | 22.7 |
| Resident permit (limited time) | 82 | 1.1 |
| Spouse or dependent of permit holder | 346 | 4.7 |
| Visitor | 25 | 0.3 |
| No status | 294 | 4.0 |
| Not Stated | 33 | 0.4 |
| Total | 7382 | 100 |

* Excludes Providenciales

Table 1.1.11: TCI Population and Population Density

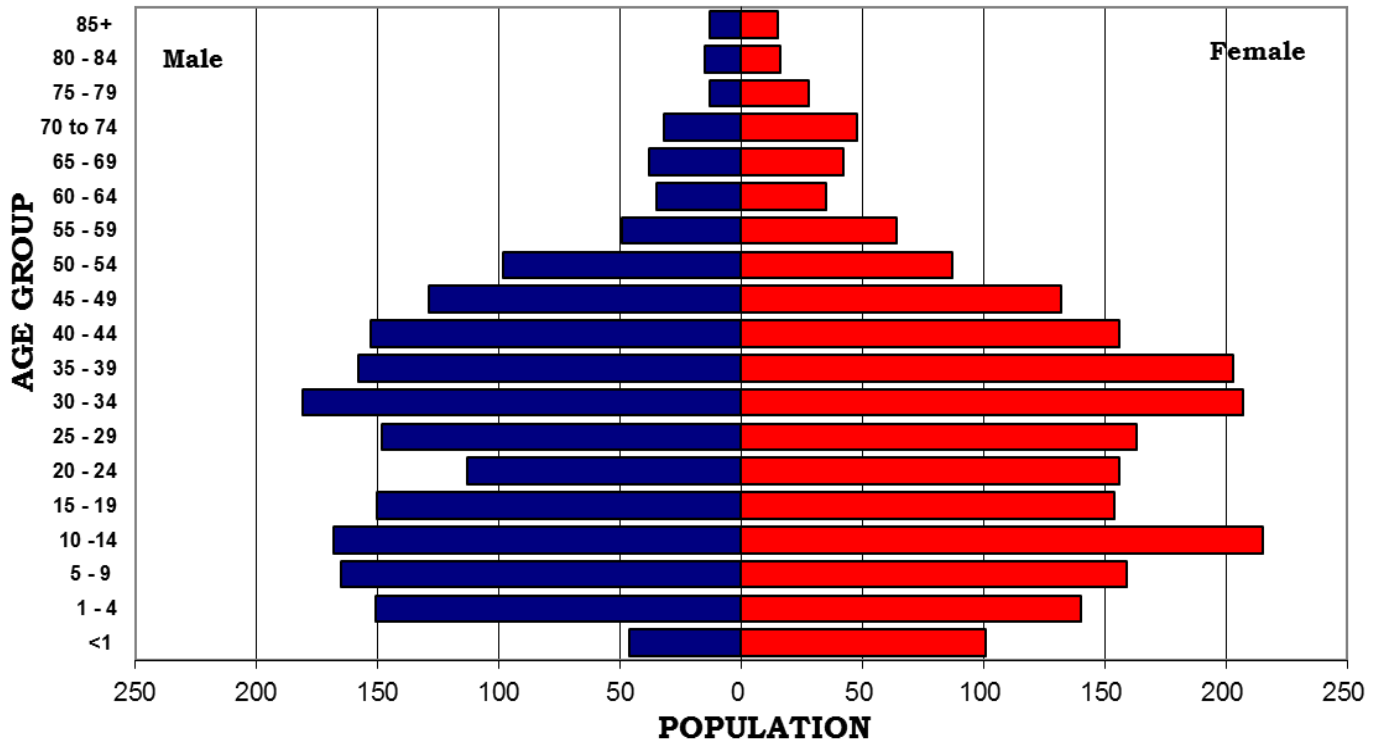
| Year | Population | Growth Rate | Population Density (population/146.72m ²) | Population Density (population/366.11m ²) |
|-------------------|------------|-------------|--|--|
| 1960 ^c | 5,668 | | 38.63 | 15.48 |
| 1970 ^c | 5,558 | -1.94% | 37.88 | 15.18 |
| 1980 ^c | 7,413 | 33.38% | 50.52 | 20.25 |
| 1990 ^c | 11,465 | 54.66% | 78.14 | 31.32 |
| 1996 | 15,310 | 33.53% | 104.35 | 41.82 |
| 2001 ^c | 19,886 | 29.89% | 135.54 | 54.32 |
| 2012 ^c | 31,458 | 58.19% | 214.41 | 85.92 |

Source: Statistical Office, Department of Economic Planning and Statistics

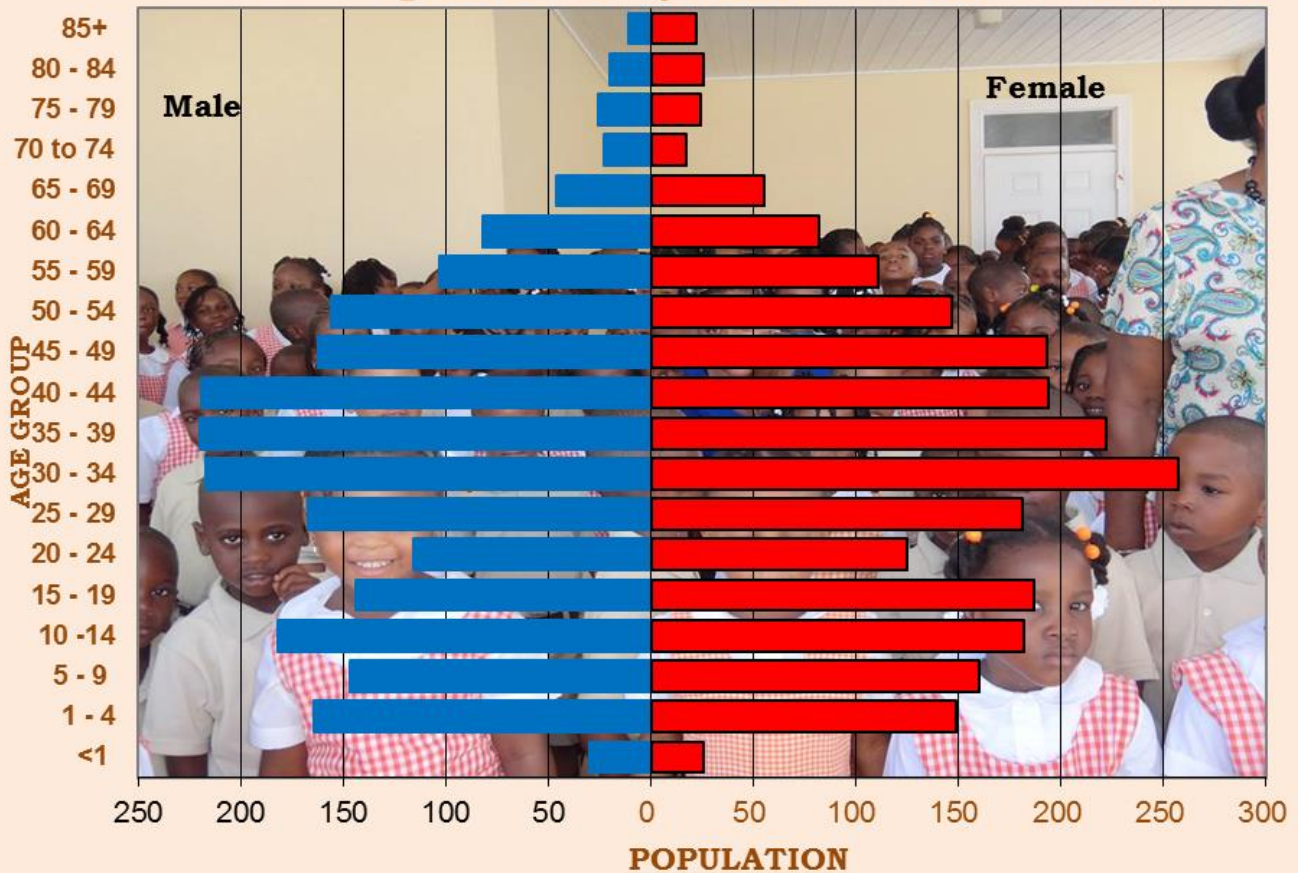


POPULATION PYRAMIDS FOR SELECTED ISLANDS 2001 VERSUS 2012

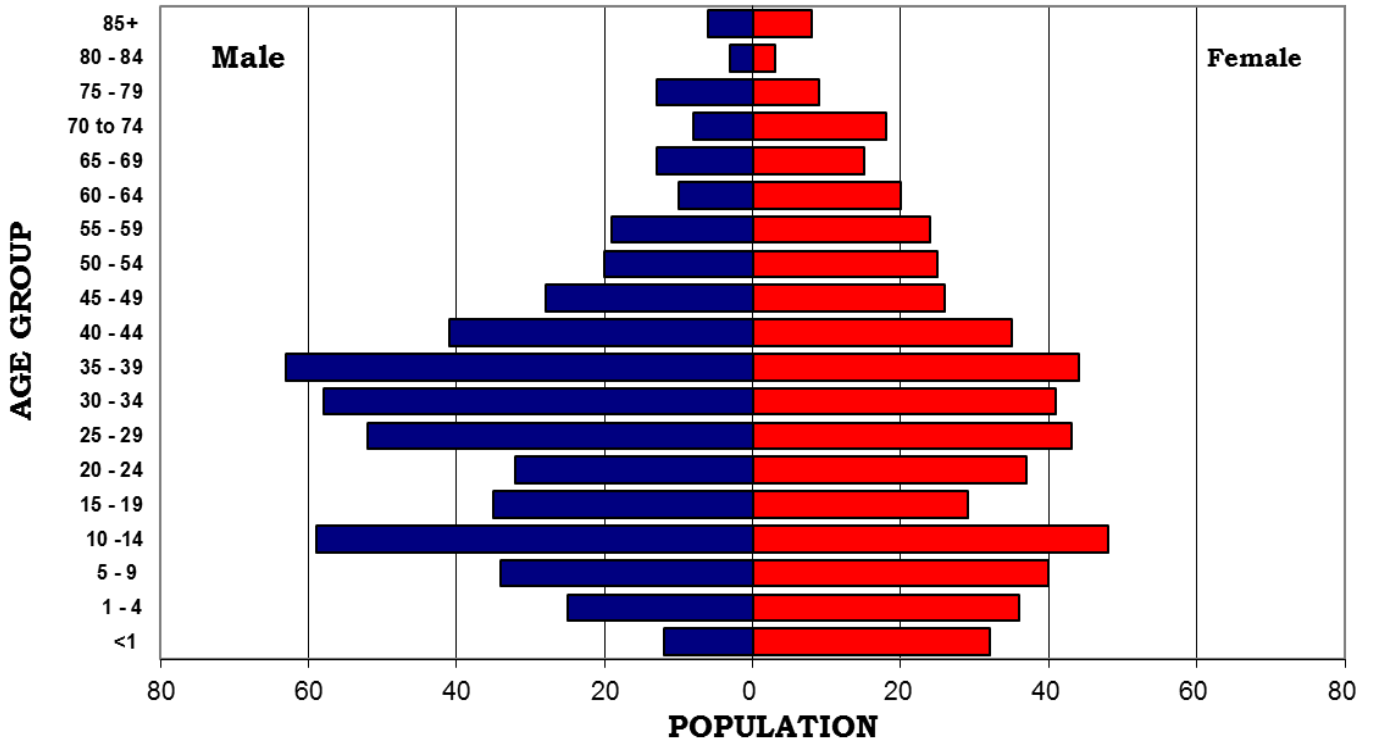
Population Pyramid: GRAND TURK, 2001



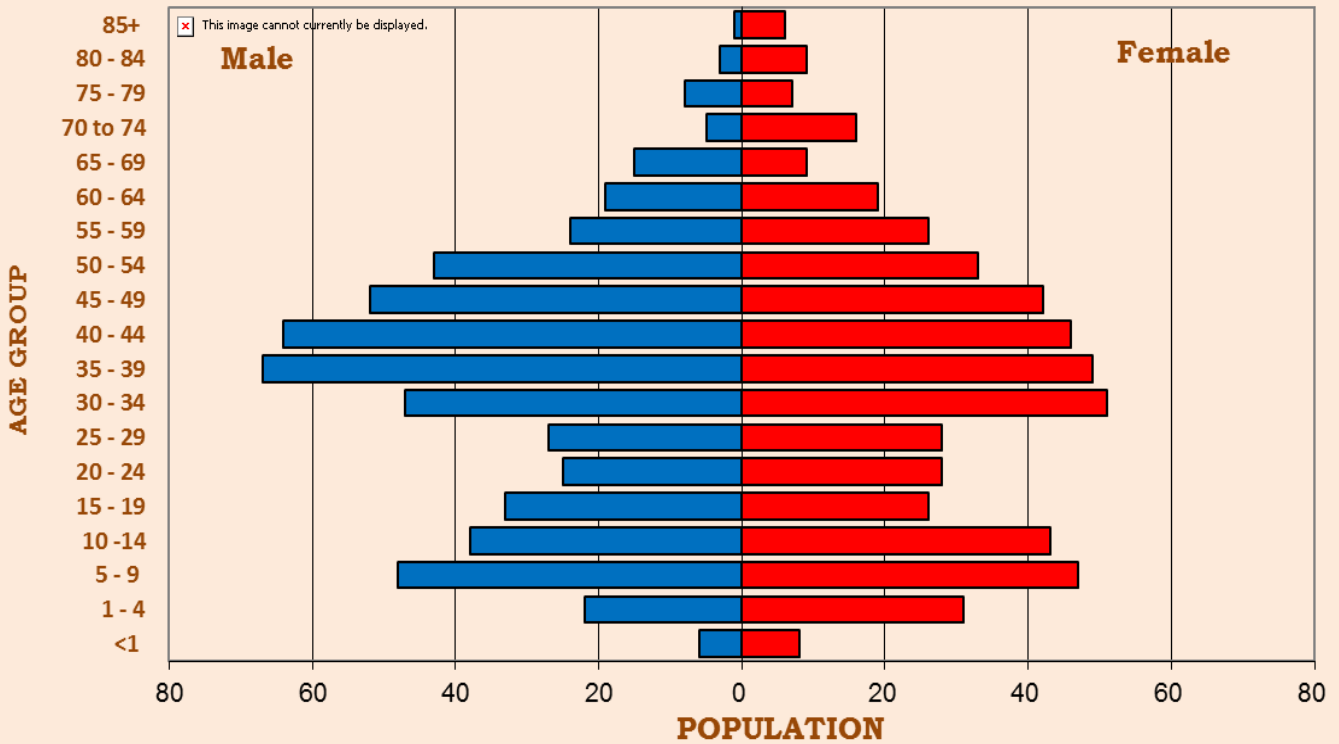
Population Pyramid: Grand Turk, 2012



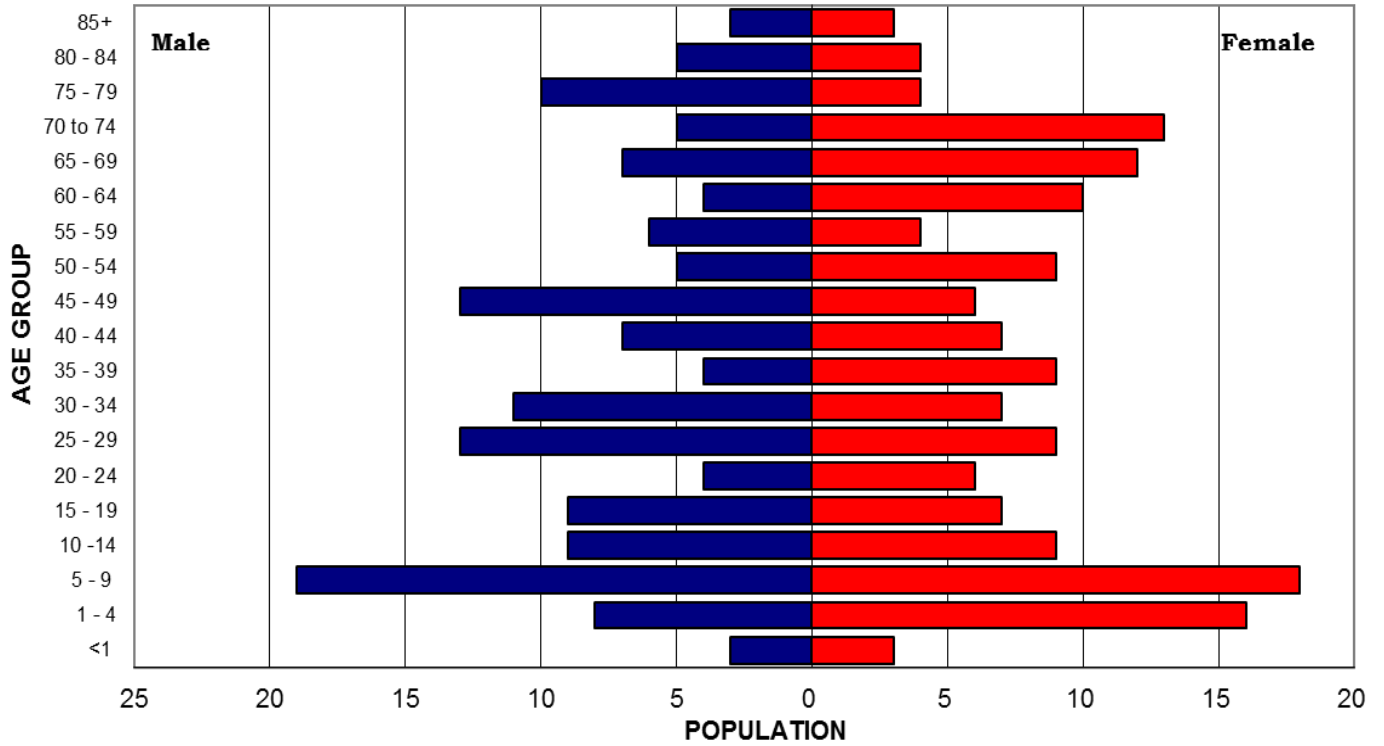
Population Pyramid: SOUTH CAICOS, 2001



Population Pyramid: South Caicos, 2012

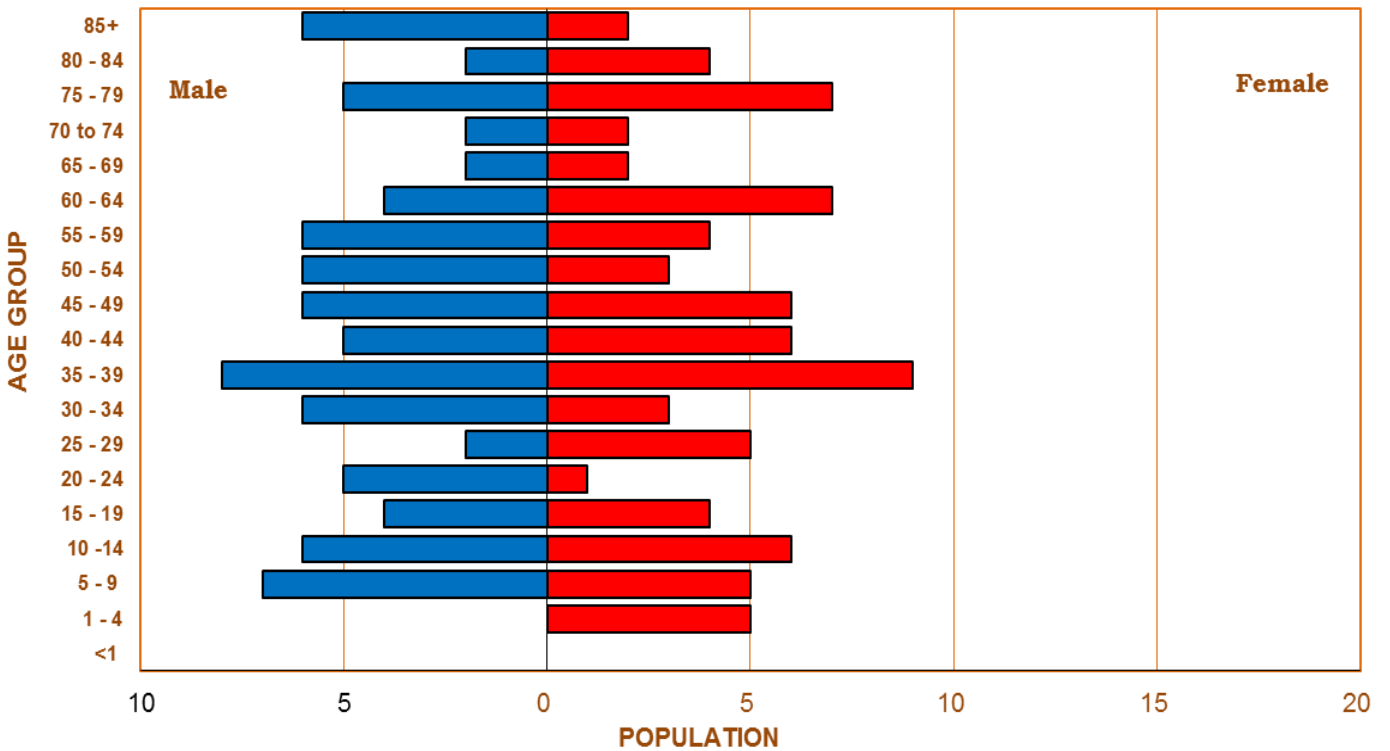


Population Pyramid: MIDDLE CAICOS, 2001

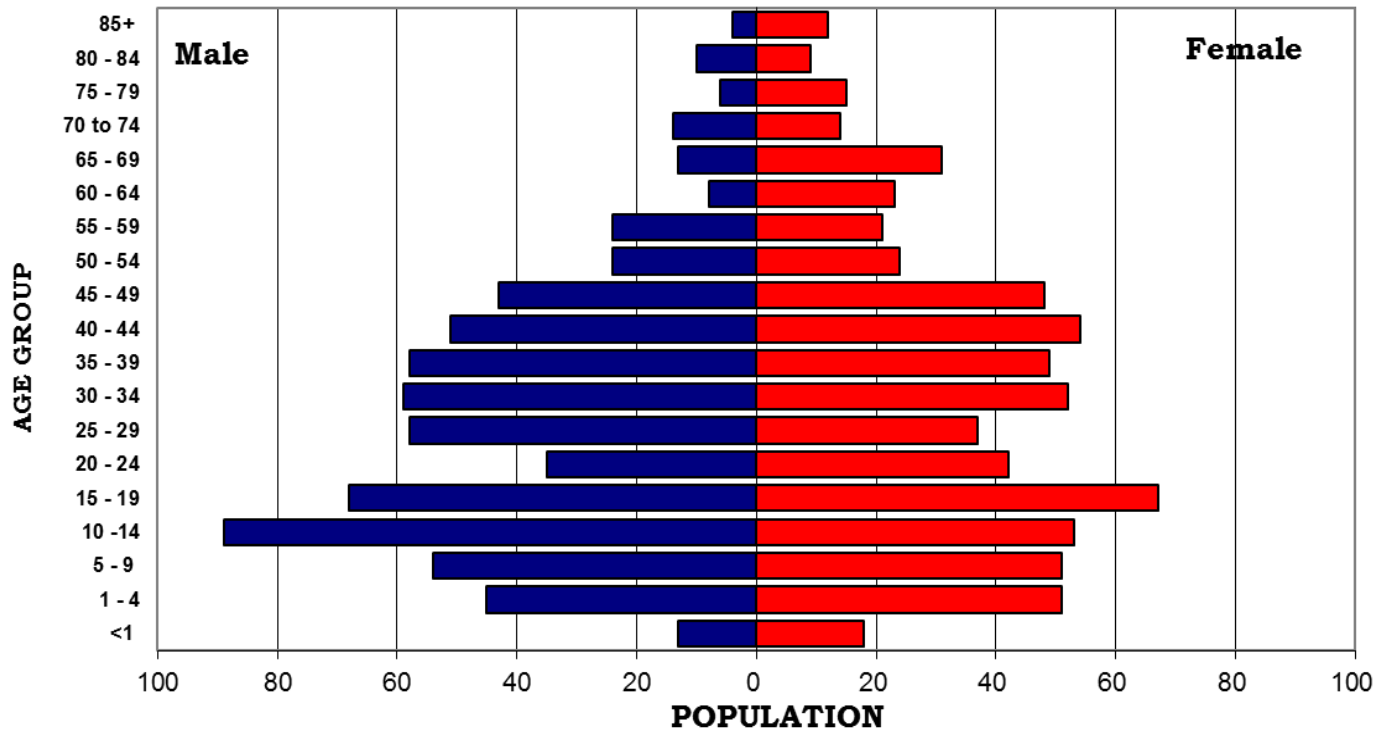


This image cannot currently be displayed.

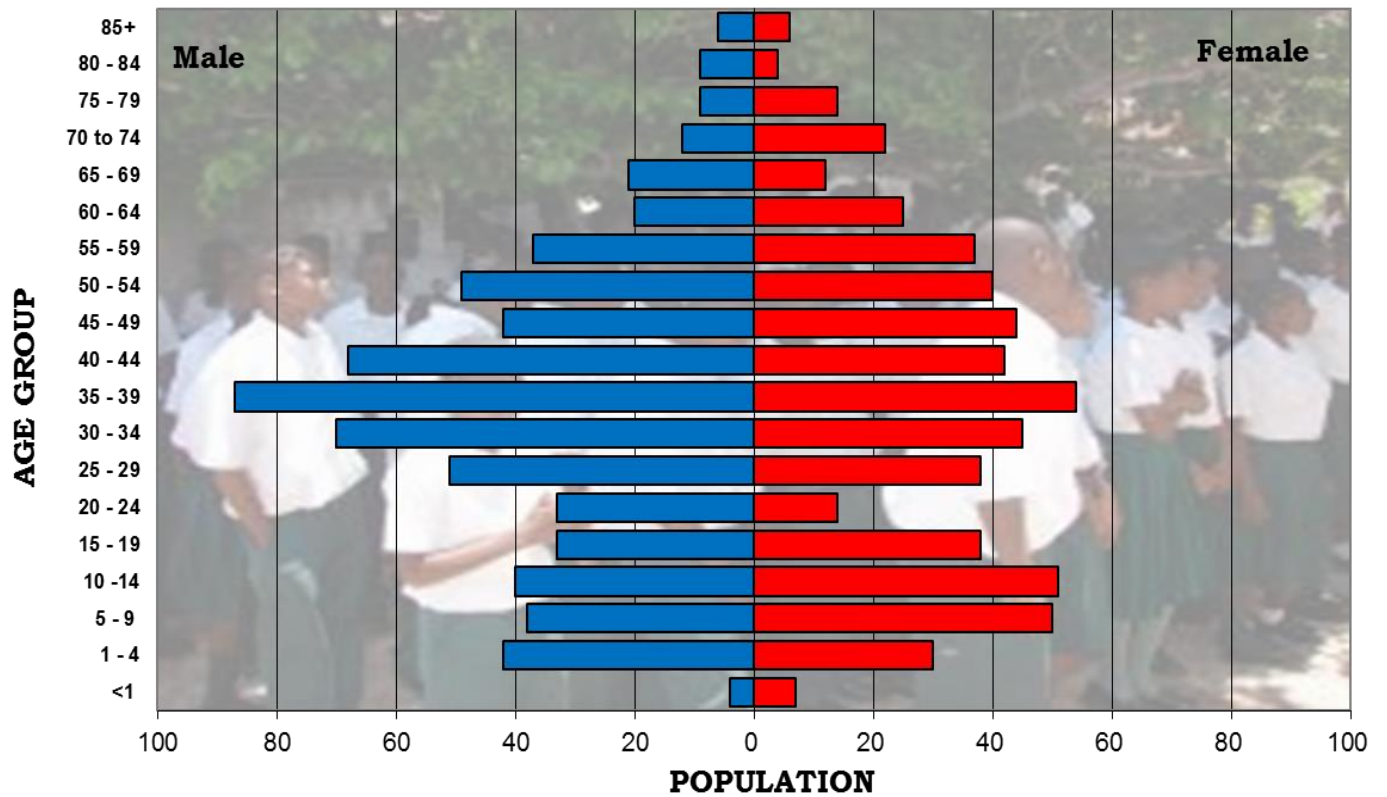
POPULATION PYRAMID: MIDDLE CAICOS, 2012



Population Pyrmad: NORTH CAICOS, 2001



Population Pyrmad: North Caicos, 2012





HOUSEHOLD AND HOUSING CHARACTERISTICS TABLES

Table 2.1.1: Percentage Change in the Number of Households by Islands, 2001 - 2012

| Island | Number of Household, 2001 | Number of Household, 2012 | Percentage Change (%) |
|-------------------------------------|----------------------------------|----------------------------------|------------------------------|
| Grand Turk & Salt Cay | 1357 | 1632 | 20.3 |
| South Caicos & Ambergris Cay | 377 | 482 | 27.9 |
| Middle Caicos | 107 | 69 | (35.5) |
| North Caicos, Parrot Cay & Pine Cay | 490 | 595 | 21.4 |
| Total | 2331 | 2778 | 19.2 |

Table 2.1.2: Average Household Size 2001 Versus 2012.

| Island | 2001 | | | 2012 | | |
|---------------|-------------------|-----------------------------|-------------------------------|-------------------|-----------------------------|-------------------------------|
| | Population | Number of Households | Average Household Size | Population | Number of Households | Average Household Size |
| Grand Turk | 3976 | 1309 | 3.0 | 4831 | 1582 | 3.1 |
| South Caicos | 1063 | 377 | 2.8 | 1139 | 452 | 2.5 |
| Middle Caicos | 301 | 106 | 2.8 | 168 | 69 | 2.4 |
| North Caicos | 1347 | 445 | 3.0 | 1312 | 529 | 2.5 |

Table 2.1.3: Distribution of Household by Island and Type of Ownership, 2012.

| Type of Ownership | Island | | | | Total |
|----------------------|-----------------------|------------------------------|---------------|-------------------------------------|-------------|
| | Grand Turk & Salt Cay | South Caicos & Ambergris Cay | Middle Caicos | North Caicos, Parrot Cay & Pine Cay | |
| Own with mortgage | 332 | 31 | 3 | 35 | 401 |
| Own without mortgage | 308 | 110 | 46 | 209 | 673 |
| Rent / Lease | 837 | 231 | 13 | 220 | 1301 |
| Squatted | 1 | 1 | 0 | 0 | 2 |
| Other | 113 | 101 | 6 | 120 | 340 |
| Not Stated | 41 | 8 | 1 | 11 | 61 |
| Total | 1632 | 482 | 69 | 595 | 2778 |

Table 2.1.4: Percentage Distribution of Household by Island and Type of Ownership, 2012

| Type of Ownership | Island | | | | Total |
|----------------------|-----------------------|------------------------------|---------------|-------------------------------------|------------|
| | Grand Turk & Salt Cay | South Caicos & Ambergris Cay | Middle Caicos | North Caicos, Parrot Cay & Pine Cay | |
| Own with mortgage | 20.3 | 6.4 | 4.3 | 5.9 | 14.4 |
| Own without mortgage | 18.9 | 22.8 | 66.7 | 35.1 | 24.2 |
| Rent / Lease | 51.3 | 47.9 | 18.8 | 37.0 | 46.8 |
| Squatted | 0.1 | 0.2 | 0.0 | 0.0 | 0.1 |
| Other | 6.9 | 21.0 | 8.7 | 20.2 | 12.2 |
| Not Stated | 2.5 | 1.7 | 1.4 | 1.8 | 2.2 |
| Total | 100 | 100 | 100 | 100 | 100 |

Table 2.1.5: Household by Island and Type of Dwelling, 2012.

| Type of Dwelling | ISLAND | | | | Total |
|------------------------------------|-----------------------|------------------------------|---------------|-------------------------------------|--------------|
| | Grand Turk & Salt Cay | South Caicos & Ambergris Cay | Middle Caicos | North Caicos, Parrot Cay & Pine Cay | |
| Separate House/ Detached | 784 | 224 | 58 | 298 | 1364 |
| Part of a Private House / Attached | 190 | 129 | 7 | 36 | 362 |
| Flat, Apartment, Condominium | 471 | 38 | 1 | 99 | 609 |
| Town/Row House | 41 | 2 | 0 | 29 | 72 |
| Double-House / Duplex | 57 | 11 | 2 | 34 | 104 |
| Dwelling attached to a business | 39 | 29 | 1 | 15 | 84 |
| Out room | 0 | 0 | 0 | 4 | 4 |
| Group Dwelling | 33 | 39 | 0 | 74 | 146 |
| Other | 5 | 3 | 0 | 5 | 13 |
| Not Stated | 12 | 7 | 0 | 1 | 20 |
| Total | 1632 | 482 | 69 | 595 | 2778 |

Table 2.1.6: Environmental Issues Affecting the Household by Island, 2012.

| Environmental Issue | Island | | | | Total |
|----------------------------|-----------------------|------------------------------|---------------|-------------------------------------|--------------|
| | Grand Turk & Salt Cay | South Caicos & Ambergris Cay | Middle Caicos | North Caicos, Parrot Cay & Pine Cay | |
| Waste | 81 | 68 | 1 | 11 | 161 |
| Drainage | 36 | 68 | 0 | 2 | 106 |
| Air Pollution | 25 | 18 | 0 | 6 | 49 |
| Soil Erosion | 12 | 28 | 0 | 2 | 42 |
| Squatting | 7 | 7 | 0 | 8 | 22 |
| Mangrove Destruction | 0 | 42 | 0 | 0 | 42 |
| Water Contamination | 10 | 14 | 0 | 1 | 25 |
| Noise | 130 | 14 | 1 | 8 | 153 |
| Phone tower | 4 | 3 | 0 | 3 | 10 |
| Flooding | 102 | 292 | 11 | 25 | 430 |
| Feral animal | 612 | 135 | 6 | 19 | 772 |
| None | 812 | 84 | 51 | 506 | 1453 |
| Other | 50 | 3 | 2 | 24 | 79 |
| Total | 1881 | 776 | 72 | 615 | 3344 |

Table 2.1.7: Number of Rooms in the Household by Island, 2012.

| Number of rooms | Island | | | | Total |
|-------------------|-----------------------|------------------------------|---------------|-------------------------------------|-------------|
| | Grand Turk & Salt Cay | South Caicos & Ambergris Cay | Middle Caicos | North Caicos, Parrot Cay & Pine Cay | |
| 1 | 161 | 92 | 0 | 114 | 367 |
| 2 | 298 | 111 | 9 | 118 | 536 |
| 3 | 239 | 62 | 13 | 79 | 393 |
| 4 | 265 | 44 | 8 | 79 | 396 |
| 5 | 222 | 46 | 18 | 64 | 350 |
| 6 | 145 | 48 | 10 | 61 | 264 |
| 7 | 100 | 37 | 7 | 39 | 183 |
| 8+ | 174 | 36 | 3 | 35 | 248 |
| Not Stated | 28 | 6 | 1 | 6 | 41 |
| Total | 1632 | 482 | 69 | 595 | 2778 |

Table 2.1.8: Number of Bedrooms in the Household by Island, 2012.

| Number of Bedrooms | Islands | | | | Total |
|--------------------|-----------------------|------------------------------|---------------|-------------------------------------|-------------|
| | Grand Turk & Salt Cay | South Caicos & Ambergris Cay | Middle Caicos | North Caicos, Parrot Cay & Pine Cay | |
| 0 | 0 | 1 | 1 | 1 | 3 |
| 1 | 545 | 217 | 14 | 263 | 1039 |
| 2 | 427 | 92 | 16 | 101 | 636 |
| 3 | 401 | 89 | 22 | 113 | 625 |
| 4 | 159 | 58 | 12 | 71 | 300 |
| 5 | 54 | 15 | 2 | 25 | 96 |
| 6+ | 21 | 4 | 1 | 12 | 38 |
| Not Stated | 25 | 6 | 1 | 9 | 41 |
| Total | 1632 | 482 | 69 | 595 | 2778 |

Table 2.1.9: Year when Dwelling was Built by Island, 2012.

| Year | Island | | | | Total |
|---------------|-----------------------|--------------|---------------|--|-------|
| | Grand Turk & Salt Cay | South Caicos | Middle Caicos | North Caicos/ Parrot Cay/ Pine Cay | |
| Prior to 1980 | 303 | 69 | 46 | 185 | 603 |
| 1980-89 | 132 | 22 | 10 | 43 | 207 |
| 1990-99 | 128 | 19 | 4 | 60 | 211 |
| 2000-06 | 175 | 57 | 2 | 58 | 292 |
| 2007 | 47 | 6 | 1 | 11 | 65 |
| 2008 | 47 | 6 | 2 | 5 | 60 |
| 2009 | 73 | 3 | 0 | 8 | 84 |
| 2010 | 40 | 2 | 0 | 7 | 49 |
| 2011 | 11 | 4 | 0 | 7 | 22 |
| Unknown | 639 | 285 | 4 | 208 | 1136 |

Table 2.1.10: Year when Dwelling was Built by Island, 2012, Percent.

| Year | Island | | | | Total |
|---------------|-----------------------|--------------|---------------|--|-------|
| | Grand Turk & Salt Cay | South Caicos | Middle Caicos | North Caicos, Parrot Cay, Pine Cay | |
| Prior to 1980 | 18.6 | 14.3 | 66.7 | 31.1 | 21.7 |
| 1980-89 | 8.1 | 4.6 | 14.5 | 7.2 | 7.5 |
| 1990-99 | 7.8 | 3.9 | 5.8 | 10.1 | 7.6 |
| 2000-06 | 10.7 | 11.8 | 2.9 | 9.7 | 10.5 |
| 2007 | 2.9 | 1.2 | 1.4 | 1.8 | 2.3 |
| 2008 | 2.9 | 1.2 | 2.9 | 0.8 | 2.2 |
| 2009 | 4.5 | 0.6 | 0.0 | 1.3 | 3.0 |
| 2010 | 2.5 | 0.4 | 0.0 | 1.2 | 1.8 |
| 2011 | 0.7 | 0.8 | 0.0 | 1.2 | 0.8 |
| Unknown | 39.2 | 59.1 | 5.8 | 35.0 | 40.9 |
| Not Stated | 2.3 | 1.9 | 0.0 | 0.5 | 1.8 |
| Total | 100 | 100 | 100 | 100 | 100 |

Table 2.1.11: Insured Households By Island, 2012.

| Island | Is this dwelling insured? | | | | Total |
|------------------------------|---------------------------|-------------|-------------|------------|-------------|
| | Yes | No | Don't know | Not Stated | |
| Grand Turk | 523 | 506 | 526 | 27 | 1582 |
| Salt Cay | 5 | 31 | 14 | 0 | 50 |
| South Caicos & Ambergris Cay | 84 | 207 | 185 | 6 | 482 |
| Middle Caicos | 7 | 60 | 2 | 0 | 69 |
| North Caicos | 34 | 264 | 228 | 3 | 529 |
| Parrot Cay & Pine Cay | 16 | 0 | 50 | 0 | 66 |
| Total | 669 | 1068 | 1005 | 36 | 2778 |

Table 2.1.12: Percentage Breakdown of Insured Households by Island, 2012.

| Island | Is this dwelling insured? | | | | Total |
|-------------------------------------|---------------------------|------|------------|------------|-------|
| | Yes | No | Don't know | Not Stated | |
| Grand Turk & Salt Cay | 32.4 | 32.9 | 33.1 | 1.7 | 100.0 |
| South Caicos & Ambergris Cay | 17.4 | 42.9 | 38.4 | 1.2 | 100.0 |
| Middle Caicos | 10.1 | 87.0 | 2.9 | 0.0 | 100.0 |
| North Caicos, Parrot Cay & Pine Cay | 8.4 | 44.4 | 46.7 | 0.5 | 100.0 |



Table 2.1.13: Breakdown of Household by Island With Contents Insured 2012.

| ISLAND | Are the contents insured? | | | | Total |
|-------------------------------------|---------------------------|-----------|-------------|------------|-------------|
| | Yes | Partially | No | Don't know | |
| Grand Turk & Salt Cay | 331 | 22 | 859 | 379 | 1591 |
| South Caicos & Ambergris Cay | 31 | 5 | 312 | 128 | 476 |
| Middle Caicos | 3 | 0 | 61 | 3 | 67 |
| North Caicos, Parrot Cay & Pine Cay | 22 | 6 | 352 | 210 | 590 |
| Total | 387 | 33 | 1584 | 720 | 2724 |

Table 2.1.14: Percentage Breakdown of Household by Island with Contents Insured 2012.

| ISLAND | Are the contents insured? | | | | Total |
|-------------------------------------|---------------------------|-----------|------|------------|-------|
| | Yes | Partially | No | Don't know | |
| Grand Turk & Salt Cay | 20.8 | 1.4 | 54.0 | 23.8 | 100.0 |
| South Caicos & Ambergris Cay | 6.5 | 1.1 | 65.5 | 26.9 | 100.0 |
| Middle Caicos | 4.5 | 0.0 | 91.0 | 4.5 | 100.0 |
| North Caicos, Parrot Cay & Pine Cay | 3.7 | 1.0 | 59.7 | 35.6 | 100.0 |
| Total | | | | | |



Table 2.1.15: Household by Island and Outer Wall Material, 2012.

| Roof Material | Island | | | | Total |
|------------------|-----------------------|------------------------------|---------------|-------------------------------------|-------------|
| | Grand Turk & Salt Cay | South Caicos & Ambergris Cay | Middle Caicos | North Caicos, Parrot Cay & Pine Cay | |
| Sheet Metal | 869 | 208 | 23 | 127 | 1227 |
| Wood Shingle | 83 | 28 | 10 | 29 | 150 |
| Clay Tiles | 12 | 0 | 0 | 7 | 19 |
| Asphalt Shingle | 522 | 173 | 34 | 385 | 1114 |
| Other Shingle | 21 | 34 | 1 | 5 | 61 |
| Concrete-Decking | 36 | 5 | 0 | 8 | 49 |
| Other | 55 | 26 | 1 | 28 | 112 |
| Not Stated | 34 | 8 | 0 | 4 | 46 |
| Total | 1632 | 482 | 69 | 595 | 2778 |

Table 2.1.16: Percentage Breakdown of Household by Island and Outer Wall Materials, 2012.

| Roof Material | Island | | | | Total |
|------------------|-----------------------|------------------------------|---------------|-------------------------------------|--------------|
| | Grand Turk & Salt Cay | South Caicos & Ambergris Cay | Middle Caicos | North Caicos, Parrot Cay & Pine Cay | |
| Sheet Metal | 53.2 | 43.2 | 33.3 | 21.3 | 44.2 |
| Wood Shingle | 5.1 | 5.8 | 14.5 | 4.9 | 5.4 |
| Clay Tiles | 0.7 | 0.0 | 0.0 | 1.2 | 0.7 |
| Asphalt Shingle | 32.0 | 35.9 | 49.3 | 64.7 | 40.1 |
| Other Shingle | 1.3 | 7.1 | 1.4 | 0.8 | 2.2 |
| Concrete-Decking | 2.2 | 1.0 | 0.0 | 1.3 | 1.8 |
| Other | 3.4 | 5.4 | 1.4 | 4.7 | 4.0 |
| Not Stated | 2.1 | 1.7 | 0.0 | 0.7 | 1.7 |
| Total | 100.0 | 100.0 | 100.0 | 99.7 | 100.0 |

Table 2.1.17: Household by Outer Wall Material and Island, 2012.

| Wall Material | Island | | | | Total |
|-------------------------|-----------------------|------------------------------|---------------|--------------|-------|
| | Grand Turk & Salt Cay | South Caicos & Ambergris Cay | Middle Caicos | North Caicos | |
| Wood | 470 | 160 | 5 | 91 | 726 |
| Slab concrete | 25 | 31 | 1 | 88 | 145 |
| Wood & concrete | 70 | 39 | 4 | 34 | 147 |
| Stucco & Foam | 12 | 3 | 0 | 10 | 25 |
| Brick | 9 | 0 | 0 | 0 | 9 |
| Blocks & Concrete | 976 | 214 | 32 | 287 | 1509 |
| Wood & Galvanized Metal | 8 | 2 | 0 | 5 | 15 |
| Stone | 35 | 2 | 11 | 71 | 119 |
| Other | 2 | 25 | 16 | 6 | 49 |
| Not Stated | 25 | 6 | 0 | 3 | 34 |
| Total | 1632 | 482 | 69 | 595 | 2778 |

Table 2.1.18. Percentage Distribution of Household by Outer Wall Material and Island, 2012.

| Wall Material | Island | | | | Total |
|-------------------------|-----------------------|------------------------------|---------------|--------------|-------|
| | Grand Turk & Salt Cay | South Caicos & Ambergris Cay | Middle Caicos | North Caicos | |
| Wood | 28.8 | 33.2 | 7.2 | 15.3 | 26.1 |
| Slab concrete | 1.5 | 6.4 | 1.4 | 14.8 | 5.2 |
| Wood & concrete | 4.3 | 8.1 | 5.8 | 5.7 | 5.3 |
| Stucco & Foam | 0.7 | 0.6 | 0.0 | 1.7 | 0.9 |
| Brick | 0.6 | 0.0 | 0.0 | 0.0 | 0.3 |
| Blocks & Concrete | 59.8 | 44.4 | 46.4 | 48.2 | 54.3 |
| Wood & Galvanized Metal | 0.5 | 0.4 | 0.0 | 0.8 | 0.5 |
| Stone | 2.1 | 0.4 | 15.9 | 11.9 | 4.3 |
| Other | 0.1 | 5.2 | 23.2 | 1.0 | 1.8 |
| Not Stated | 1.5 | 1.2 | 0.0 | 0.5 | 1.2 |
| Total | 100.0 | 100.0 | 100.0 | 100.0 | 100.0 |

Table 2.1.19. Household by Island and Main Floor Materials, 2012.

| Island | Main Floor Material | | | | | | Total |
|-------------------------------------|---------------------|-----------|-----------|----------------|-----------|---------------|-------------|
| | Concrete | Plywood | Wood | Earth/ Sand | Other | Not Stated | |
| Grand Turk & Salt Cay | 1502 | 22 | 59 | 6 | 3 | 40 | 1632 |
| South Caicos & Ambergris Cay | 426 | 9 | 27 | 0 | 14 | 6 | 482 |
| Middle Caicos | 65 | 1 | 2 | 0 | 0 | 1 | 69 |
| North Caicos, Parrot Cay & Pine Cay | 559 | 13 | 10 | 2 | 2 | 9 | 595 |
| Total | 2552 | 45 | 98 | 8 | 19 | 56 | 2778 |

Table 2.1.20. Percentage Distribution of Household by Island and Main Floor Materials, 2012

| Island | Main Floor Material | | | | | | Total |
|-------------------------------------|---------------------|---------|------|----------------|-------|---------------|-------|
| | Concrete | Plywood | Wood | Earth/ Sand | Other | Not Stated | |
| Grand Turk & Salt Cay | 92.0 | 1.3 | 3.6 | 0.4 | 0.2 | 2.5 | 100.0 |
| South Caicos & Ambergris Cay | 88.4 | 1.9 | 5.6 | 0.0 | 2.9 | 1.2 | 100.0 |
| Middle Caicos | 94.2 | 1.4 | 2.9 | 0.0 | 0.0 | 1.4 | 100.0 |
| North Caicos, Parrot Cay & Pine Cay | 93.9 | 2.2 | 1.7 | 0.3 | 0.3 | 1.5 | 100.0 |

Table 2.1.21: Household by Island and Type of Toilet Facilities, 2012.

| Islands | Type of Toilet Facilities Household use | | | | | Total |
|-------------------------------------|---|-------------|-------------|-----------|------------|-------------|
| | None | Flush | Pit Latrine | Other | Not Stated | |
| Grand Turk & Salt Cay | 1 | 1238 | 368 | 4 | 21 | 1632 |
| South Caicos & Ambergris Cay | 2 | 289 | 184 | 1 | 6 | 482 |
| Middle Caicos | 0 | 57 | 12 | 0 | 0 | 69 |
| North Caicos, Parrot Cay & Pine Cay | 11 | 441 | 132 | 11 | 0 | 595 |
| Total | 14 | 2025 | 696 | 16 | 27 | 2778 |

Table 2.1.22: Percentage Distribution of Household by Island and Type of Toilet Facilities, 2012.

| Islands | Type of Toilet Facilities Household use | | | | | Total |
|-------------------------------------|---|-------------|-------------|------------|------------|--------------|
| | None | Flush | Pit Latrine | Other | Not Stated | |
| Grand Turk & Salt Cay | 0.1 | 75.9 | 22.5 | 0.2 | 1.3 | 100.0 |
| South Caicos & Ambergris Cay | 0.4 | 60.0 | 38.2 | 0.2 | 1.2 | 100.0 |
| Middle Caicos | 0.0 | 82.6 | 17.4 | 0.0 | 0.0 | 100.0 |
| North Caicos, Parrot Cay & Pine Cay | 1.8 | 74.1 | 22.2 | 1.8 | 0.0 | 100.0 |
| Total | 0.5 | 72.9 | 25.1 | 0.6 | 1.0 | 100.0 |

Table 2.1.23: Household by Island and Type of Bathing Facilities, 2012.

| Islands | Are your Bathing Facilities Indoors | | | Total |
|-------------------------------------|-------------------------------------|-----|------------|-------|
| | Yes | No | Not Stated | |
| Grand Turk & Salt Cay | 1387 | 189 | 56 | 1632 |
| South Caicos & Ambergris Cay | 431 | 43 | 8 | 482 |
| Middle Caicos | 65 | 3 | 1 | 69 |
| North Caicos, Parrot Cay & Pine Cay | 470 | 121 | 4 | 595 |
| Total | 2353 | 356 | 69 | 2778 |

Table 2.1.24: Percentage Distribution of Household by Island and Type of Bathing Facilities, 2012.

| Islands | Are your Bathing Facilities Indoors | | | Total |
|-------------------------------------|-------------------------------------|------|------------|-------|
| | Yes | No | Not Stated | |
| Grand Turk & Salt Cay | 85.0 | 11.6 | 3.4 | 100 |
| South Caicos & Ambergris Cay | 89.4 | 8.9 | 1.7 | 100 |
| Middle Caicos | 94.2 | 4.3 | 1.4 | 100 |
| North Caicos, Parrot Cay & Pine Cay | 79.0 | 20.3 | 0.7 | 100 |
| Total | 84.7 | 12.8 | 2.5 | 100.0 |

Table 2.1.25: Household by Island and Main Source of Lighting, 2012.

| Source of Lighting | Island | | | | Total |
|--------------------|-----------------------|------------------------------|---------------|-------------------------------------|-------------|
| | Grand Turk & Salt Cay | South Caicos & Ambergris Cay | Middle Caicos | North Caicos, Parrot Cay & Pine Cay | |
| Electricity Public | 1547 | 471 | 66 | 520 | 2574 |
| Generator | 3 | 1 | 0 | 3 | 7 |
| Kerosene | 4 | 3 | 0 | 17 | 24 |
| Battery Lamp | 6 | 6 | 1 | 11 | 24 |
| Candles | 28 | 17 | 0 | 38 | 83 |
| None | 7 | 5 | 2 | 1 | 15 |
| Other | 6 | 1 | 0 | 3 | 10 |
| Not Stated | 31 | 8 | 0 | 2 | 41 |
| Total | 1632 | 512 | 69 | 595 | 2778 |

Table 2.1.26: Household by Island and Main Source of Water, 2012.

| Main Source of Water | ISLAND | | | | Total |
|-----------------------------|-----------------------|------------------------------|---------------|-------------------------------------|-------------|
| | Grand Turk & Salt Cay | South Caicos & Ambergris Cay | Middle Caicos | North Caicos, Parrot Cay & Pine Cay | |
| Public piped into dwelling | 151 | 0 | 0 | 0 | 151 |
| Public piped into yard | 25 | 0 | 0 | 0 | 25 |
| Public stand pipe | 4 | 2 | 0 | 10 | 16 |
| Private piped into dwelling | 3 | 50 | 1 | 96 | 139 |
| Private catchment | 33 | 4 | 6 | 49 | 92 |
| Well | 0 | 0 | 0 | 228 | 239 |
| Truck delivered | 570 | 128 | 8 | 9 | 715 |
| Tank / Cistern | 814 | 206 | 53 | 182 | 1255 |
| Other | 16 | 86 | 1 | 21 | 121 |
| Not Stated | 16 | 6 | 0 | 0 | 22 |
| Total | 1632 | 482 | 69 | 595 | 2778 |

Table 2.1.27: Household by Island and Main Source of Drinking Water, 2012.

| Main Source of Drinking Water | ISLAND | | | | | | Total |
|-------------------------------|-------------|-----------|------------------------------|---------------|--------------|-----------------------|-------------|
| | Grand Turk | Salt Cay | South Caicos & Ambergris Cay | Middle Caicos | North Caicos | Parrot Cay & Pine Cay | |
| Bottled | 1361 | 35 | 336 | 45 | 396 | 66 | 2231 |
| Rainwater | 81 | 1 | 25 | 11 | 92 | 0 | 212 |
| Well | 0 | 0 | 0 | 0 | 6 | 0 | 8 |
| Tank | 87 | 14 | 50 | 13 | 33 | 0 | 198 |
| Standpipe | 0 | 0 | 1 | 0 | 0 | 0 | 2 |
| City Water | 15 | 0 | 0 | 0 | 0 | 0 | 50 |
| Other | 6 | 0 | 63 | 0 | 0 | 0 | 36 |
| Not Stated | 32 | 0 | 7 | 0 | 2 | 0 | 41 |
| Total | 1582 | 50 | 482 | 69 | 529 | 66 | 2778 |

Table 2.1.28: Percentage Distribution of Household by Island and Main Source of Drinking Water, 2012.

| Main Source of Drinking Water | ISLAND | | | | Total |
|-------------------------------|--------------|------------------------------|---------------|-------------------------------------|--------------|
| | Grand Turk | South Caicos & Ambergris Cay | Middle Caicos | North Caicos, Parrot Cay & Pine Cay | |
| Bottled | 85.5 | 69.7 | 65.2 | 77.6 | 80.3 |
| Rainwater | 5.0 | 5.2 | 15.9 | 15.5 | 7.6 |
| Well | 0.0 | 0.0 | 0.0 | 1.0 | 0.3 |
| Tank | 6.2 | 10.4 | 18.8 | 5.5 | 7.1 |
| Standpipe | 0.0 | 0.2 | 0.0 | 0.0 | 0.1 |
| City Water | 0.9 | 0.0 | 0.0 | 0.0 | 1.8 |
| Other | 0.4 | 13.1 | 0.0 | 0.0 | 1.3 |
| Not Stated | 2.0 | 1.5 | 0.0 | 0.3 | 1.5 |
| Total | 100.0 | 100.0 | 100.0 | 100.0 | 100.0 |

Table 2.1.29: Household by Island and Type of Cooking Fuel Used 2012.

| Fuel Used for Cooking | Island | | | | Total |
|-------------------------|-----------------------|------------------------------|---------------|-------------------------------------|-------------|
| | Grand Turk & Salt Cay | South Caicos & Ambergris Cay | Middle Caicos | North Caicos, Parrot Cay & Pine Cay | |
| Wood/ Charcoal | 18 | 17 | 1 | 38 | 74 |
| Liquefied Petroleum Gas | 703 | 215 | 19 | 239 | 1176 |
| Electricity | 831 | 154 | 48 | 273 | 1306 |
| Kerosene | 22 | 17 | 0 | 0 | 39 |
| None | 17 | 70 | 0 | 31 | 118 |
| Other | 4 | 3 | 0 | 12 | 19 |
| Not Stated | 37 | 6 | 1 | 2 | 46 |
| Total | 1632 | 482 | 69 | 595 | 2778 |

Table 2.1.30: Percentage Distribution of Household by Island and Type of Cooking Fuel Used 2012.

| Fuel Used for Cooking | Island | | | | Total |
|-------------------------|-----------------------|------------------------------|---------------|-------------------------------------|--------------|
| | Grand Turk & Salt Cay | South Caicos & Ambergris Cay | Middle Caicos | North Caicos, Parrot Cay & Pine Cay | |
| Wood/ Charcoal | 1.1 | 3.5 | 1.4 | 6.4 | 2.7 |
| Liquefied Petroleum Gas | 43.1 | 44.6 | 27.5 | 40.2 | 42.3 |
| Electricity | 50.9 | 32.0 | 69.6 | 45.9 | 47.0 |
| Kerosene | 1.3 | 3.5 | 0.0 | 0.0 | 1.4 |
| None | 1.0 | 14.5 | 0.0 | 5.2 | 4.2 |
| Other | 0.2 | 0.6 | 0.0 | 2.0 | 0.7 |
| Not Stated | 2.3 | 1.2 | 1.4 | 0.3 | 1.7 |
| Total | 100.0 | 100.0 | 100.0 | 100.0 | 100.0 |

Table 2.1.31: Household by Island and Main Method of Garbage Disposal, 2012.

| Main Method of Garbage Disposal | ISLAND | | | | | Total |
|---------------------------------|-----------------------|------------------------------|---------------|--------------|-----------------------|-------------|
| | Grand Turk & Salt Cay | South Caicos & Ambergris Cay | Middle Caicos | North Caicos | Parrot Cay & Pine Cay | |
| Burning | 7 | 2 | 0 | 24 | 16 | 33 |
| Dumping on Land | 255 | 2 | 0 | 4 | 0 | 261 |
| Dumping in Water | 7 | 0 | 0 | 2 | 0 | 9 |
| Private Bin | 481 | 30 | 0 | 109 | 20 | 620 |
| Public Bin | 856 | 437 | 69 | 452 | 30 | 1814 |
| Burying | 0 | 0 | 0 | 1 | 0 | 1 |
| Other | 1 | 2 | 0 | 1 | 0 | 4 |
| Not Stated | 25 | 9 | 0 | 2 | 0 | 36 |
| Total | 1632 | 482 | 69 | 529 | 66 | 2778 |

Table 2.1.32: Household by Island and Number of Private Vehicles Kept, 2012.

| Island | Private Vehicles Kept | | | | | Total |
|-------------------------------------|-----------------------|------------|------------|-----------|------------|-------------|
| | 0 | 1 | 2 | 3+ | Not Stated | |
| Grand Turk | 633 | 622 | 191 | 55 | 81 | 1582 |
| Salt Cay | 32 | 14 | 3 | 0 | 1 | 50 |
| South Caicos & Ambergris Cay | 263 | 92 | 22 | 14 | 91 | 482 |
| Middle Caicos | 39 | 23 | 3 | 1 | 3 | 69 |
| North Caicos/ Parrot Cay & Pine Cay | 231 | 188 | 62 | 19 | 95 | 595 |
| Total | 1198 | 939 | 281 | 89 | 271 | 2778 |



Table 2.1.33: Household with Computers by Island, 2012.

| Island | Computer | | | Total |
|-------------------------------------|-------------|-------------|------------|-------------|
| | Yes | No | Not Stated | |
| Grand Turk | 934 | 674 | 24 | 1632 |
| South Caicos & Ambergris Cay | 222 | 253 | 7 | 482 |
| Middle Caicos | 29 | 40 | 0 | 69 |
| North Caicos/ Parrot Cay & Pine Cay | 264 | 329 | 2 | 595 |
| Total | 1449 | 1296 | 33 | 2778 |

Table 2.1.34: Percentage Distribution of Household with Computers by Island, 2012.

| Island | Computer | | | Total |
|-------------------------------------|-------------|-------------|------------|--------------|
| | Yes | No | Not Stated | |
| Grand Turk | 57.2 | 41.3 | 1.5 | 100.0 |
| South Caicos & Ambergris Cay | 46.1 | 52.5 | 1.5 | 100.0 |
| Middle Caicos | 42.0 | 58.0 | 0.0 | 100.0 |
| North Caicos/ Parrot Cay & Pine Cay | 44.4 | 55.3 | 0.3 | 100.0 |
| Total | 52.2 | 46.7 | 1.2 | 100.0 |

Table 2.1.35: Household With Access to Selected Amenities by Island, 2012.

| ISLAND | Refrigerator | | | | Microwave | | | | Cable Television | | | |
|-------------------------------------|--------------|------------|------------|-------------|-------------|------------|------------|-------------|------------------|------------|------------|-------------|
| | Yes | No | Not Stated | Total | Yes | No | Not Stated | Total | Yes | No | Not Stated | Total |
| Grand Turk | 1444 | 120 | 18 | 1582 | 1156 | 409 | 17 | 1582 | 1149 | 416 | 17 | 1582 |
| Salt Cay | 47 | 3 | 0 | 50 | 36 | 14 | 0 | 50 | 0 | 50 | 0 | 50 |
| South Caicos & Ambergris Cay | 400 | 74 | 8 | 482 | 309 | 166 | 7 | 482 | 340 | 132 | 10 | 482 |
| Middle Caicos | 62 | 7 | 0 | 69 | 49 | 20 | 0 | 69 | 29 | 40 | 0 | 69 |
| North Caicos/ Parrot Cay / Pine Cay | 492 | 102 | 1 | 595 | 362 | 233 | 0 | 595 | 299 | 296 | 0 | 595 |
| Total | 2445 | 306 | 27 | 2778 | 1912 | 842 | 24 | 2778 | 1817 | 934 | 27 | 2778 |

| ISLAND | Electrical Water Heater | | | | Water Tank | | | | Water Pump | | | |
|-------------------------------------|-------------------------|-------------|------------|-------------|-------------|-------------|------------|-------------|-------------|-------------|------------|-------------|
| | Yes | No | Not Stated | Total | Yes | No | Not Stated | Total | Yes | No | Not Stated | Total |
| Grand Turk | 724 | 838 | 20 | 1582 | 917 | 644 | 21 | 1582 | 937 | 626 | 19 | 1582 |
| Salt Cay | 19 | 31 | 0 | 50 | 41 | 9 | 0 | 50 | 41 | 9 | 0 | 50 |
| South Caicos & Ambergris Cay | 132 | 342 | 8 | 482 | 220 | 255 | 7 | 482 | 217 | 258 | 7 | 482 |
| Middle Caicos | 30 | 39 | 0 | 69 | 53 | 16 | 0 | 69 | 45 | 24 | 0 | 69 |
| North Caicos/ Parrot Cay / Pine Cay | 253 | 342 | 0 | 595 | 218 | 377 | 0 | 595 | 351 | 244 | 0 | 595 |
| Total | 1158 | 1592 | 28 | 2778 | 1449 | 1301 | 28 | 2778 | 1591 | 1161 | 26 | 2778 |



RELIGIOUS DENOMINATIONS

Table 3.1.1. Total Population by Island and Religious Denomination, 2012.

| Religious Denomination | Island | | | | Total |
|-----------------------------|-----------------------|------------------------------|---------------|-------------------------------------|-------------|
| | Grand Turk & Salt Cay | South Caicos & Ambergris Cay | Middle Caicos | North Caicos/ Parrot Cay & Pine Cay | |
| Anglican | 750 | 122 | 1 | 7 | 880 |
| Apostolic | 57 | 21 | 0 | 1 | 79 |
| Baptist | 1124 | 279 | 104 | 388 | 1895 |
| Evangelical | 64 | 15 | 1 | 6 | 86 |
| Jehovah Witness | 60 | 4 | 0 | 32 | 96 |
| Methodist | 599 | 93 | 4 | 19 | 715 |
| Seventh Day Adventist | 274 | 18 | 3 | 60 | 355 |
| Church of God of Prophecy | 246 | 41 | 28 | 193 | 508 |
| New Testament Church of God | 470 | 285 | 3 | 6 | 764 |
| Other Pentecostal | 202 | 75 | 3 | 36 | 316 |
| Presbyterian | 10 | 0 | 0 | 2 | 12 |
| Roman Catholic | 326 | 42 | 2 | 46 | 416 |
| Other Christian | 185 | 4 | 11 | 120 | 320 |
| Rastafarian | 7 | 1 | 0 | 0 | 8 |
| Muslim | 5 | 0 | 0 | 9 | 14 |
| None | 170 | 68 | 2 | 105 | 345 |
| Other | 149 | 38 | 1 | 356 | 544 |
| Not Stated | 22 | 2 | 0 | 5 | 29 |
| Total | 4720 | 1108 | 163 | 1391 | 7382 |



Table 3.1.2. Total Population by Status and Religious Denomination, 2012.

| Religious Affiliation | Status | | | | | | | | | | | |
|-----------------------------|-------------|-------------|------------|--------------|-------------|------------|------------|-----------|------------|-------------|-------------|------------|
| | Belonger | | | Non-Belonger | | | Not Stated | | | Total | | |
| | Male | Female | Not Stated | Male | Female | Not Stated | Male | Female | Not Stated | Male | Female | Not Stated |
| Anglican | 391 | 402 | 2 | 44 | 39 | 0 | 0 | 2 | 0 | 435 | 443 | 2 |
| Apostolic | 24 | 31 | 0 | 12 | 11 | 1 | 0 | 0 | 0 | 36 | 42 | 1 |
| Baptist | 643 | 673 | 5 | 289 | 274 | 2 | 6 | 2 | 1 | 938 | 949 | 8 |
| Evangelical | 17 | 10 | 0 | 27 | 32 | 0 | 0 | 0 | 0 | 44 | 42 | 0 |
| Jehovah Witness | 17 | 16 | 0 | 32 | 29 | 0 | 1 | 1 | 0 | 50 | 46 | 0 |
| Methodist | 323 | 287 | 0 | 56 | 46 | 0 | 1 | 2 | 0 | 380 | 335 | 0 |
| Seventh Day Adventist | 45 | 41 | 0 | 144 | 122 | 0 | 2 | 1 | 0 | 191 | 164 | 0 |
| Church of God of Prophecy | 139 | 191 | 0 | 87 | 91 | 0 | 0 | 0 | 0 | 226 | 282 | 0 |
| New Testament Church of God | 163 | 208 | 2 | 166 | 225 | 0 | 0 | 0 | 0 | 329 | 433 | 2 |
| Other Pentecostal | 101 | 126 | 2 | 41 | 46 | 0 | 0 | 0 | 0 | 142 | 172 | 2 |
| Presbyterian | 3 | 4 | 0 | 1 | 4 | 0 | 0 | 0 | 0 | 4 | 8 | 0 |
| Roman Catholic | 31 | 34 | 0 | 181 | 168 | 1 | 1 | 0 | 0 | 213 | 202 | 1 |
| Other Christian | 64 | 50 | 0 | 112 | 92 | 1 | 0 | 1 | 0 | 176 | 143 | 1 |
| Rastafarian | 7 | 0 | 0 | 0 | 1 | 0 | 0 | 0 | 0 | 7 | 1 | 0 |
| Muslim | 0 | 0 | 0 | 8 | 6 | 0 | 0 | 0 | 0 | 8 | 6 | 0 |
| None | 99 | 31 | 0 | 147 | 68 | 0 | 0 | 0 | 0 | 246 | 99 | 0 |
| Other | 112 | 139 | 0 | 171 | 120 | 1 | 0 | 1 | 0 | 283 | 260 | 1 |
| Not Stated | 4 | 4 | 0 | 5 | 5 | 0 | 5 | 0 | 6 | 14 | 9 | 6 |
| Total | 2183 | 2247 | 11 | 1523 | 1379 | 6 | 16 | 10 | 7 | 3722 | 3636 | 24 |

Table 3.1.3. Total Population by Status and Religious Denomination, 2012.

| Religious Affiliation | Status | | | | | | | | | | | |
|-----------------------------|--------------|--------------|--------------|--------------|--------------|--------------|--------------|--------------|--------------|--------------|--------------|--------------|
| | Belonger | | | Non-Belonger | | | Not Stated | | | Total | | |
| | Male | Female | Not Stated | Male | Female | Not Stated | Male | Female | Not Stated | Male | Female | Not Stated |
| Anglican | 17.9 | 17.9 | 18.2 | 2.9 | 2.8 | 0.0 | 0.0 | 20.0 | 0.0 | 11.7 | 12.2 | 8.3 |
| Apostolic | 1.1 | 1.4 | 0.0 | 0.8 | 0.8 | 16.7 | 0.0 | 0.0 | 0.0 | 1.0 | 1.2 | 4.2 |
| Baptist | 29.5 | 30.0 | 45.5 | 19.0 | 19.9 | 33.3 | 37.5 | 20.0 | 14.3 | 25.2 | 26.1 | 33.3 |
| Evangelical | 0.8 | 0.4 | 0.0 | 1.8 | 2.3 | 0.0 | 0.0 | 0.0 | 0.0 | 1.2 | 1.2 | 0.0 |
| Jehovah Witness | 0.8 | 0.7 | 0.0 | 2.1 | 2.1 | 0.0 | 6.3 | 10.0 | 0.0 | 1.3 | 1.3 | 0.0 |
| Methodist | 14.8 | 12.8 | 0.0 | 3.7 | 3.3 | 0.0 | 6.3 | 20.0 | 0.0 | 10.2 | 9.2 | 0.0 |
| Seventh Day Adventist | 2.1 | 1.8 | 0.0 | 9.5 | 8.8 | 0.0 | 12.5 | 10.0 | 0.0 | 5.1 | 4.5 | 0.0 |
| Church of God of Prophecy | 6.4 | 8.5 | 0.0 | 5.7 | 6.6 | 0.0 | 0.0 | 0.0 | 0.0 | 6.1 | 7.8 | 0.0 |
| New Testament Church of God | 7.5 | 9.3 | 18.2 | 10.9 | 16.3 | 0.0 | 0.0 | 0.0 | 0.0 | 8.8 | 11.9 | 8.3 |
| Other Pentecostal | 4.6 | 5.6 | 18.2 | 2.7 | 3.3 | 0.0 | 0.0 | 0.0 | 0.0 | 3.8 | 4.7 | 8.3 |
| Presbyterian | 0.1 | 0.2 | 0.0 | 0.1 | 0.3 | 0.0 | 0.0 | 0.0 | 0.0 | 0.1 | 0.2 | 0.0 |
| Roman Catholic | 1.4 | 1.5 | 0.0 | 11.9 | 12.2 | 16.7 | 6.3 | 0.0 | 0.0 | 5.7 | 5.6 | 4.2 |
| Other Christian | 2.9 | 2.2 | 0.0 | 7.4 | 6.7 | 16.7 | 0.0 | 10.0 | 0.0 | 4.7 | 3.9 | 4.2 |
| Rastafarian | 0.3 | 0.0 | 0.0 | 0.0 | 0.1 | 0.0 | 0.0 | 0.0 | 0.0 | 0.2 | 0.0 | 0.0 |
| Muslim | 0.0 | 0.0 | 0.0 | 0.5 | 0.4 | 0.0 | 0.0 | 0.0 | 0.0 | 0.2 | 0.2 | 0.0 |
| None | 4.5 | 1.4 | 0.0 | 9.7 | 4.9 | 0.0 | 0.0 | 0.0 | 0.0 | 6.6 | 2.7 | 0.0 |
| Other | 5.1 | 6.2 | 0.0 | 11.2 | 8.7 | 16.7 | 0.0 | 10.0 | 0.0 | 7.6 | 7.2 | 4.2 |
| Not Stated | 0.2 | 0.2 | 0.0 | 0.3 | 0.4 | 0.0 | 31.3 | 0.0 | 85.7 | 0.4 | 0.2 | 25.0 |
| Total | 100.0 | 100.0 | 100.0 | 100.0 | 100.0 | 100.0 | 100.0 | 100.0 | 100.0 | 100.0 | 100.0 | 100.0 |

Table 3.1.3. Total Population by Country of Birth and Religious Denomination, 2012.

| Religious Affiliation | Country of Birth | | | | | | Total |
|-----------------------------|--------------------------|------------|--------------------|-------------|------------|-------------|-------------|
| | Turks and Caicos Islands | Bahamas | Dominican Republic | Haiti | USA | Other | |
| Anglican | 641 | 34 | 17 | 30 | 74 | 83 | 879 |
| Apostolic | 43 | 6 | 2 | 5 | 5 | 18 | 79 |
| Baptist | 1002 | 110 | 23 | 527 | 131 | 99 | 1892 |
| Evangelical | 14 | 2 | 34 | 22 | 6 | 8 | 86 |
| Jehovah Witness | 26 | 5 | 5 | 41 | 8 | 11 | 96 |
| Methodist | 508 | 23 | 13 | 56 | 55 | 55 | 710 |
| Seventh Day Adventist | 84 | 1 | 1 | 135 | 2 | 131 | 354 |
| Church of God of Prophecy | 270 | 26 | 9 | 136 | 12 | 53 | 506 |
| New Testament Church of God | 320 | 12 | 169 | 181 | 15 | 65 | 762 |
| Other Pentecostal | 168 | 15 | 19 | 31 | 36 | 46 | 315 |
| Presbyterian | 1 | 1 | 0 | 0 | 7 | 3 | 12 |
| Roman Catholic | 50 | 3 | 89 | 106 | 17 | 150 | 415 |
| Other Christian | 99 | 9 | 20 | 111 | 19 | 62 | 320 |
| Rastafarian | 6 | 0 | 0 | 0 | 1 | 1 | 8 |
| Muslim | 0 | 0 | 0 | 1 | 0 | 13 | 14 |
| None | 103 | 3 | 40 | 59 | 37 | 102 | 344 |
| Other | 221 | 19 | 17 | 112 | 32 | 143 | 544 |
| Not Stated | 5 | 0 | 1 | 9 | 2 | 3 | 20 |
| Total | 3561 | 269 | 459 | 1562 | 459 | 1046 | 7356 |



EMPLOYMENT TABLES

Table 3.2.1: Working Age Population by Age and Employment Status, 2012.

| Island | Working Age Population | Labour Force | Employed | Labour Force Participation Rate (%) | Unemployment Rate (%) |
|--|------------------------|--------------|----------|-------------------------------------|-----------------------|
| Grand Turk & Salt Cay | | | | | |
| Male | 1630 | 1438 | 1208 | 88.2 | 16.0 |
| Female | 1725 | 1372 | 1207 | 79.5 | 12.0 |
| South Caicos & Ambergis Cay | | | | | |
| Male | 427 | 383 | 321 | 89.7 | 16.2 |
| Female | 354 | 295 | 263 | 83.3 | 10.8 |
| Middle Caicos | | | | | |
| Male | 52 | 43 | 38 | 82.7 | 11.6 |
| Female | 48 | 33 | 28 | 68.8 | 15.2 |
| North Caicos, Parrot Cay & Pine Cay | | | | | |
| Male | 590 | 531 | 439 | 90.0 | 17.3 |
| Female | 418 | 310 | 270 | 74.2 | 12.9 |

Table 3.2.2: Working Age Population by Age and Employment Status, 2012.

| Employment Status | Age | | | | | | | | | | | Total |
|---------------------------------------|------------|------------|------------|------------|------------|------------|------------|------------|------------|------------|------------|-------------|
| | 15-19 | 20-24 | 25-29 | 30-34 | 35-39 | 40-44 | 45-49 | 50-54 | 55-59 | 60-64 | Not Stated | |
| Not stated | 12 | 1 | 4 | 6 | 1 | 7 | 0 | 2 | 3 | 2 | 11 | 49 |
| Employed (Full-time) | 43 | 221 | 377 | 513 | 508 | 450 | 371 | 319 | 200 | 107 | 8 | 3117 |
| Employed (Part-time) | 10 | 33 | 52 | 101 | 104 | 79 | 86 | 55 | 30 | 32 | 0 | 582 |
| Seeking and available for work | 43 | 69 | 73 | 86 | 96 | 86 | 63 | 64 | 32 | 13 | 0 | 625 |
| NOT seeking, but available for work | 9 | 8 | 10 | 14 | 12 | 12 | 10 | 7 | 8 | 3 | 0 | 93 |
| Permanently sick or disabled | 2 | 4 | 3 | 3 | 2 | 4 | 6 | 11 | 6 | 4 | 3 | 48 |
| At school or a student, without a job | 346 | 13 | 4 | 2 | 4 | 1 | 0 | 0 | 2 | 0 | 0 | 372 |
| Wholly retired from paid work | 0 | 0 | 0 | 0 | 0 | 0 | 2 | 11 | 52 | 88 | 2 | 155 |
| Home duties | 3 | 6 | 16 | 22 | 27 | 28 | 30 | 17 | 20 | 12 | 0 | 181 |
| Other | 2 | 4 | 7 | 3 | 6 | 11 | 3 | 10 | 5 | 5 | 0 | 56 |
| Total | 470 | 359 | 546 | 750 | 760 | 678 | 571 | 496 | 358 | 266 | 24 | 5278 |

Table 3.2.3: Working Age Population by Employment Category, Age and Status, 2012.

| | Employment Status | Age | | | | | | | | | | Total | |
|---------------------|---------------------------------------|-------|-------|-------|-------|-------|-------|-------|-------|-------|-------|-------|-------------|
| | | 15-19 | 20-24 | 25-29 | 30-34 | 35-39 | 40-44 | 45-49 | 50-54 | 55-59 | 60-64 | | Not Stated |
| Belonger | Not stated | 11 | 0 | 2 | 3 | 0 | 2 | 0 | 1 | 3 | 2 | 1 | 25 |
| | Employed (Full-time) | 38 | 162 | 176 | 210 | 189 | 206 | 208 | 201 | 138 | 77 | 1 | 1606 |
| | Employed (Part-time) | 8 | 17 | 15 | 19 | 23 | 15 | 24 | 16 | 16 | 26 | 0 | 179 |
| | Seeking and available for work | 37 | 56 | 25 | 18 | 20 | 28 | 31 | 35 | 18 | 13 | 0 | 281 |
| | NOT seeking, but available for work | 4 | 6 | 3 | 4 | 5 | 9 | 9 | 3 | 4 | 3 | 0 | 50 |
| | Permanently sick or disabled | 2 | 3 | 2 | 3 | 2 | 4 | 5 | 9 | 6 | 4 | 3 | 43 |
| | At school or a student, without a job | 261 | 7 | 2 | 0 | 2 | 1 | 0 | 0 | 1 | 0 | 0 | 274 |
| | Wholly retired from paid work | 0 | 0 | 0 | 0 | 0 | 0 | 2 | 6 | 42 | 72 | 1 | 123 |
| | Home duties | 1 | 3 | 1 | 5 | 6 | 9 | 9 | 6 | 13 | 11 | 0 | 64 |
| | Other | 0 | 0 | 1 | 1 | 3 | 4 | 2 | 6 | 5 | 3 | 0 | 25 |
| Non-belonger | Not stated | 1 | 0 | 2 | 2 | 1 | 4 | 0 | 1 | 0 | 0 | 1 | 12 |
| | Employed (Full-time) | 4 | 54 | 193 | 291 | 303 | 236 | 152 | 106 | 56 | 25 | 7 | 1427 |
| | Employed (Part-time) | 2 | 16 | 36 | 81 | 76 | 61 | 61 | 39 | 11 | 5 | 0 | 388 |
| | Seeking and available for work | 6 | 11 | 46 | 66 | 64 | 55 | 32 | 26 | 14 | 0 | 0 | 320 |
| | NOT seeking, but available for work | 4 | 2 | 7 | 10 | 6 | 3 | 1 | 4 | 4 | 0 | 0 | 41 |
| | Permanently sick or disabled | 0 | 1 | 0 | 0 | 0 | 0 | 1 | 2 | 0 | 0 | 0 | 4 |
| | At school or a student, without a job | 83 | 6 | 2 | 2 | 2 | 0 | 0 | 0 | 1 | 0 | 0 | 96 |
| | Wholly retired from paid work | 0 | 0 | 0 | 0 | 0 | 0 | 0 | 3 | 7 | 13 | 0 | 23 |
| | Home duties | 2 | 3 | 15 | 17 | 21 | 18 | 20 | 11 | 6 | 1 | 0 | 114 |
| | Other | 2 | 3 | 6 | 2 | 3 | 7 | 1 | 4 | 0 | 2 | 0 | 30 |

Table 3.2.3: Working Age Population by Employment Category, Age and Status, 2012. (Cont'd)

| | Employment Status | Age | | | | | | | | | | Total | |
|-----------------------|---------------------------------------|------------|------------|------------|------------|------------|------------|------------|------------|------------|------------|-----------|-------------|
| | | 15-19 | 20-24 | 25-29 | 30-34 | 35-39 | 40-44 | 45-49 | 50-54 | 55-59 | 60-64 | | Not Stated |
| Unknown Status | Not stated | 0 | 1 | 0 | 1 | 0 | 1 | 0 | 0 | 0 | 0 | 9 | 12 |
| | Employed (Full-time) | 1 | 5 | 8 | 12 | 16 | 8 | 11 | 12 | 6 | 5 | 0 | 84 |
| | Employed (Part-time) | 0 | 0 | 1 | 1 | 5 | 3 | 1 | 0 | 3 | 1 | 0 | 15 |
| | Seeking and available for work | 0 | 2 | 2 | 2 | 12 | 3 | 0 | 3 | 0 | 0 | 0 | 24 |
| | NOT seeking, but available for work | 1 | 0 | 0 | 0 | 1 | 0 | 0 | 0 | 0 | 0 | 0 | 2 |
| | Permanently sick or disabled | 0 | 0 | 1 | 0 | 0 | 0 | 0 | 0 | 0 | 0 | 0 | 1 |
| | At school or a student, without a job | 2 | 0 | 0 | 0 | 0 | 0 | 0 | 0 | 0 | 0 | 0 | 2 |
| | Wholly retired from paid work | 0 | 0 | 0 | 0 | 0 | 0 | 0 | 2 | 3 | 3 | 1 | 9 |
| | Home duties | 0 | 0 | 0 | 0 | 0 | 1 | 1 | 0 | 1 | 0 | 0 | 3 |
| | Other | 0 | 1 | 0 | 0 | 0 | 0 | 0 | 0 | 0 | 0 | 0 | 1 |
| | Total | 470 | 359 | 546 | 750 | 760 | 678 | 571 | 496 | 358 | 266 | 24 | 5278 |

Table 3.2.4: Number of Persons Employed by Hours worked in Main Job by Sex and Status, 2012

| HOURS WORKED | STATUS | | | | | | | |
|-------------------|------------|------------|--------------|------------|------------|-----------|---------------------|-------------|
| | Belonger | | Non-belonger | | Not Stated | | Employed Population | |
| | Male | Female | Male | Female | Male | Female | Male | Female |
| Less than 5 hours | 10 | 11 | 15 | 18 | 0 | 0 | 25 | 29 |
| 5-14 hours | 26 | 36 | 54 | 65 | 0 | 2 | 80 | 103 |
| 15-29 hours | 54 | 71 | 122 | 117 | 3 | 10 | 179 | 198 |
| 30-59 hours | 745 | 740 | 675 | 511 | 47 | 27 | 1467 | 1278 |
| 60 hours and more | 72 | 36 | 112 | 64 | 6 | 2 | 190 | 102 |
| Total | 907 | 894 | 978 | 775 | 56 | 41 | 1941 | 1710 |

Table 3.2.5: Percent Employed by Hours worked in Main Job by Sex and Status, 2012.

| HOURS WORKED | STATUS | | | | | | | |
|-------------------|----------|--------|--------------|--------|------------|--------|---------------------|--------|
| | Belonger | | Non-belonger | | Not Stated | | Employed Population | |
| | Male | Female | Male | Female | Male | Female | Male | Female |
| Less than 5 hours | 1.1 | 1.2 | 1.5 | 2.3 | 0.0 | 0.0 | 1.3 | 1.7 |
| 5-14 hours | 2.9 | 4.0 | 5.5 | 8.4 | 0.0 | 4.9 | 4.1 | 6.0 |
| 15-29 hours | 6.0 | 7.9 | 12.5 | 15.1 | 5.4 | 24.4 | 9.2 | 11.6 |
| 30-59 hours | 82.1 | 82.8 | 69.0 | 65.9 | 83.9 | 65.9 | 75.6 | 74.7 |
| 60 hours and more | 7.9 | 4.0 | 11.5 | 8.3 | 10.7 | 4.9 | 9.8 | 6.0 |
| Total | 100.0 | 100.0 | 100.0 | 100.0 | 100.0 | 100.0 | 100.0 | 100.0 |

Table 2.2.7: Steps Taken to Look for Work by Island, 2012.

| Steps Taken to Look for Work | ISLANDS | | | | Total |
|------------------------------|-----------------------|------------------------------|---------------|-------------------------------------|-------------|
| | Grand Turk & Salt Cay | South Caicos & Ambergris Cay | Middle Caicos | North Caicos, Parrot Cay & Pine Cay | |
| Nothing | 783 | 177 | 62 | 235 | 1257 |
| Direct Application (Letters) | 101 | 9 | 2 | 25 | 137 |
| Checking Work Sites | 205 | 24 | 1 | 67 | 297 |
| Asking Friends | 84 | 41 | 3 | 42 | 170 |
| Labour | 27 | 1 | 0 | 0 | 28 |
| Private Employment Offices | 3 | 3 | 1 | 6 | 13 |
| Newspapers/Websites | 3 | 0 | 0 | 2 | 5 |
| Other | 9 | 0 | 0 | 19 | 28 |
| Total | 1215 | 255 | 69 | 396 | 1935 |

Table 2.2.7: Number of Persons Employed by Category of Worker in Main Job and Island, 2012.

| Category of Main Job | Island | | | | | Total |
|--|-----------------------|------------------------------|---------------|--------------|------------|-------------|
| | Grand Turk & Salt Cay | South Caicos & Ambergris Cay | Middle Caicos | North Caicos | Not Stated | |
| Self-Employed with paid employees | 105 | 38 | 3 | 24 | 0 | 170 |
| Self-employed without paid employee | 106 | 56 | 6 | 42 | 0 | 210 |
| Paid Employee – Government & Statutory Body | 982 | 166 | 25 | 132 | 0 | 1305 |
| Paid Employee - Private Home | 118 | 31 | 13 | 86 | 0 | 248 |
| Paid Employee - Private Establishment | 1064 | 291 | 17 | 421 | 0 | 1793 |
| Apprentice / Learner | 3 | 2 | 0 | 3 | 0 | 8 |
| Unpaid Work / Volunteer | 6 | 4 | 1 | 1 | 0 | 12 |
| Unpaid Family Worker | 14 | 4 | 0 | 10 | 0 | 28 |
| Not Stated | 0 | 0 | 0 | 0 | 7 | 7 |
| Total | 2398 | 592 | 65 | 719 | 7 | 3781 |

Table 2.2.8: showing Main Reason Persons did not look for a job by sex, 2012.

| Main Reason | Sex | | |
|--|-------------|---------------|--------------|
| | Male | Female | Total |
| Own Illness, Disability, Pregnancy | 35 | 48 | 83 |
| Home Duties, Personal, Family | 7 | 170 | 177 |
| In School, training | 165 | 198 | 363 |
| Retirement, Old Age | 229 | 282 | 511 |
| Already found work to start Later | 9 | 4 | 13 |
| Awaiting Replies from Employers | 35 | 18 | 53 |
| Could not find Suitable Work | 26 | 25 | 51 |
| Do not know how or where to seek work | 15 | 12 | 27 |
| Discouraged | 8 | 4 | 12 |
| Other | 35 | 29 | 64 |
| Total | 564 | 790 | 1354 |



EDUCATION TABLES



Table 3.2.1: School Attendance by Island, 2012.

| Island | Attended School | | | Total |
|------------------------------|-----------------|------------|------------|-------------|
| | Yes | No | Not Stated | |
| Grand Turk & Salt Cay | 4499 | 201 | 20 | 4720 |
| South Caicos & Ambergris Cay | 1056 | 50 | 2 | 1108 |
| Middle Caicos | 161 | 2 | 0 | 163 |
| North Caicos | 1340 | 50 | 1 | 1391 |
| Total | 7056 | 303 | 23 | 7382 |

Table 3.2.2: School Attendance by Island, 2012, Percent.

| Island | Attended School | | | Total |
|-------------------------------------|-----------------|------------|------------|--------------|
| | Yes | No | Not Stated | |
| Grand Turk & Salt Cay | 95.3 | 4.3 | 0.4 | 100.0 |
| South Caicos & Ambergris Cay | 95.3 | 4.5 | 0.2 | 100.0 |
| Middle Caicos | 98.8 | 1.2 | 0.0 | 100.0 |
| North Caicos, Parrot Cay & Pine Cay | 96.3 | 3.6 | 0.1 | 100.0 |
| Total | 95.6 | 4.1 | 0.3 | 100.0 |



Table 3.2.3: Access to the Internet in the last Three Months by Island, 2012.

| Island | Internet Access | | | Total |
|-------------------------------------|-----------------|-------------|------------|-------------|
| | Yes | No | Not Stated | |
| Grand Turk & Salt Cay | 2592 | 2040 | 88 | 4720 |
| South Caicos & Ambergris Cay | 475 | 597 | 36 | 1108 |
| Middle Caicos | 72 | 91 | 0 | 163 |
| North Caicos, Parrot Cay & Pine Cay | 692 | 679 | 20 | 1391 |
| Total | 3831 | 3407 | 144 | 7382 |

Table 3.2.4: Access to the Internet in the last Three Months by Island, 2012, Percent.

| Island | Internet Access | | | Total |
|-------------------------------------|-----------------|-------------|--------------|--------------|
| | % Yes | % No | % Not Stated | |
| Grand Turk & Salt Cay | 54.9 | 43.2 | 1.9 | 100.0 |
| South Caicos & Ambergris Cay | 42.9 | 53.9 | 3.2 | 100.0 |
| Middle Caicos | 44.2 | 55.8 | 0.0 | 100.0 |
| North Caicos, Parrot Cay & Pine Cay | 49.7 | 48.8 | 1.4 | 100.0 |
| Total | 51.9 | 46.2 | 2.0 | 100.0 |

Chart 3.2.4: Percentage Distribution of Access to the Internet in the last Three Months.



Table 3.2.5: Places Where Internet was Accessed by Island, 2012.

| Island | Internet Access | | | | | | | Total |
|-------------------------------------|------------------------|------------|------------|----------|------------|----------------|-----------|--------------|
| | Home | Work | School | Library | Cell Phone | Friend's House | Other | |
| Grand Turk | 1985 | 240 | 48 | 4 | 220 | 56 | 39 | 2592 |
| South Caicos & Ambergris Cay | 235 | 80 | 55 | 1 | 57 | 31 | 16 | 475 |
| Middle Caicos | 62 | 3 | 3 | 0 | 1 | 2 | 1 | 72 |
| North Caicos, Parrot Cay & Pine Cay | 465 | 53 | 74 | 3 | 64 | 25 | 8 | 692 |
| Total | 2747 | 376 | 180 | 8 | 342 | 114 | 64 | 3831 |

Table 3.2.6: Places Where Internet was Accessed by Island, 2012.

| Island | Internet Access | | | | | | | Total |
|-------------------------------------|------------------------|------------|------------|------------|------------|----------------|------------|--------------|
| | Home | Work | School | Library | Cell Phone | Friend's House | Other | |
| Grand Turk | 76.6 | 9.3 | 1.9 | 0.2 | 8.5 | 2.2 | 1.5 | 100.0 |
| South Caicos & Ambergris Cay | 49.5 | 16.8 | 11.6 | 0.2 | 12.0 | 6.5 | 3.4 | 100.0 |
| Middle Caicos | 86.1 | 4.2 | 4.2 | 0.0 | 1.4 | 2.8 | 1.4 | 100.0 |
| North Caicos, Parrot Cay & Pine Cay | 67.2 | 7.7 | 10.7 | 0.4 | 9.2 | 3.6 | 1.2 | 100.0 |
| Total | 71.7 | 9.8 | 4.7 | 0.2 | 8.9 | 3.0 | 1.7 | 100.0 |

Table 3.2.7: Highest Level of Education Completed by Status, 2012

| Highest Level Completed | Status | | | Total |
|---|-------------|--------------|------------|-------------|
| | Belonger | Non-belonger | Not Stated | |
| Daycare/Nursery | 130 | 38 | 2 | 170 |
| Pre-school | 406 | 134 | 8 | 548 |
| Primary | 935 | 484 | 50 | 1469 |
| Lower Secondary (Forms 1 to 3) | 448 | 450 | 13 | 911 |
| Upper Secondary (Forms 4 & 5) | 1105 | 896 | 68 | 2069 |
| Post-Secondary, Non-tertiary | 299 | 233 | 9 | 541 |
| Tertiary level- Associate Degree | 243 | 141 | 12 | 396 |
| Tertiary level- Bachelor Degree | 184 | 200 | 12 | 396 |
| Tertiary level- Graduate / Professional | 129 | 121 | 10 | 260 |
| Other | 76 | 51 | 4 | 131 |
| Not Stated | 332 | 138 | 21 | 491 |
| Total | 4287 | 2886 | 209 | 7382 |

Table 3.2.8: Highest Level of Education Completed by Status, 2012, Percent.

| Highest Level Completed | Status | | | Total |
|---|--------------|--------------|--------------|--------------|
| | Belonger | Non-belonger | Not Stated | |
| Pre - Primary | 12.5 | 6.0 | 4.8 | 9.7 |
| Daycare/Nursery | 3.0 | 1.3 | 1.0 | 2.3 |
| Pre-school | 9.5 | 4.6 | 3.8 | 7.4 |
| Primary | 21.8 | 16.8 | 23.9 | 19.9 |
| Secondary | 36.2 | 46.6 | 38.8 | 40.4 |
| Lower Secondary (Forms 1 to 3) | 10.5 | 15.6 | 6.2 | 12.3 |
| Upper Secondary (Forms 4 & 5) | 25.8 | 31.0 | 32.5 | 28.0 |
| Post Secondary | 19.9 | 24.1 | 20.6 | 21.6 |
| Post-Secondary, Non-tertiary | 7.0 | 8.1 | 4.3 | 7.3 |
| Tertiary level- Associate Degree | 5.7 | 4.9 | 5.7 | 5.4 |
| Tertiary level- Bachelor Degree | 4.3 | 6.9 | 5.7 | 5.4 |
| Tertiary level- Graduate / Professional | 3.0 | 4.2 | 4.8 | 3.5 |
| Other | 1.8 | 1.8 | 1.9 | 1.8 |
| Not Stated | 7.7 | 4.8 | 10.0 | 6.7 |
| Total | 100.0 | 100.0 | 100.0 | 100.0 |

Table 3.2.9: Highest Level of Education Completed by Island, 2012

| Highest Level Completed | Island | | | | Total |
|---|-----------------------|------------------------------|---------------|-------------------------------------|-------------|
| | Grand Turk & Salt Cay | South Caicos & Ambergris Cay | Middle Caicos | North Caicos, Parrot Cay & Pine Cay | |
| Daycare/Nursery | 125 | 21 | 0 | 24 | 170 |
| Pre-school | 349 | 101 | 10 | 88 | 548 |
| Primary | 797 | 282 | 70 | 320 | 1469 |
| Lower Secondary (Forms 1 to 3) | 542 | 177 | 9 | 183 | 911 |
| Upper Secondary (Forms 4 & 5) | 1341 | 305 | 41 | 382 | 2069 |
| Post-Secondary, Non-tertiary | 389 | 47 | 7 | 98 | 541 |
| Tertiary level- Associate Degree | 293 | 21 | 4 | 78 | 396 |
| Tertiary level- Bachelor Degree | 283 | 40 | 2 | 71 | 396 |
| Tertiary level- Graduate / Professional | 206 | 22 | 3 | 29 | 260 |
| Other | 109 | 12 | 1 | 9 | 131 |
| Not Stated | 286 | 80 | 16 | 109 | 491 |
| Total | 4720 | 1108 | 163 | 1391 | 7382 |

Table 3.2.10: Highest Level of Education Completed by Island, 2012, Percent.

| Highest Level Completed | Island | | | | Total |
|---|-----------------------|------------------------------|---------------|-------------------------------------|--------------|
| | Grand Turk & Salt Cay | South Caicos & Ambergris Cay | Middle Caicos | North Caicos, Parrot Cay & Pine Cay | |
| Pre-Primary | 10.0 | 11.0 | 6.1 | 8.1 | 9.7 |
| Daycare/Nursery | 2.6 | 1.9 | 0.0 | 1.7 | 2.3 |
| Pre-school | 7.4 | 9.1 | 6.1 | 6.3 | 7.4 |
| Primary | 16.9 | 25.5 | 42.9 | 23.0 | 19.9 |
| Secondary | 39.9 | 43.5 | 30.7 | 40.6 | 40.4 |
| Lower Secondary (Forms 1 to 3) | 11.5 | 16.0 | 5.5 | 13.2 | 12.3 |
| Upper Secondary (Forms 4 & 5) | 28.4 | 27.5 | 25.2 | 27.5 | 28.0 |
| Post Secondary | 24.8 | 11.7 | 9.8 | 19.8 | 21.6 |
| Post-Secondary, Non-tertiary | 8.2 | 4.2 | 4.3 | 7.0 | 7.3 |
| Tertiary level- Associate Degree | 6.2 | 1.9 | 2.5 | 5.6 | 5.4 |
| Tertiary level- Bachelor Degree | 6.0 | 3.6 | 1.2 | 5.1 | 5.4 |
| Tertiary level- Graduate / Professional | 4.4 | 2.0 | 1.8 | 2.1 | 3.5 |
| Other | 2.3 | 1.1 | 0.6 | 0.6 | 1.8 |
| Not Stated | 6.1 | 7.2 | 9.8 | 7.8 | 6.7 |
| Total | 100.0 | 100.0 | 100.0 | 100.0 | 100.0 |

Table 3.2.11: Highest Level of Education Completed by Sex, 2012, percent.

| Highest Level Completed | Sex | | | | | |
|---|-------------|-------------|------------|-------------|-------------|--------------|
| | Male | Female | Not Stated | % Male | % Female | % Not Stated |
| <u>Pre-Primary</u> | 367 | 349 | 2 | 9.9 | 9.6 | 8.3 |
| Daycare/Nursery | 88 | 82 | 0 | 2.4 | 2.3 | 0.0 |
| Pre-school | 279 | 267 | 2 | 7.5 | 7.3 | 8.3 |
| <u>Primary</u> | 738 | 725 | 6 | 19.8 | 19.9 | 25.0 |
| <u>Secondary</u> | 1608 | 1367 | 5 | 43.2 | 37.6 | 20.8 |
| Lower Secondary (Forms 1 to 3) | 473 | 437 | 1 | 12.7 | 12.0 | 4.2 |
| Upper Secondary (Forms 4 & 5) | 1135 | 930 | 4 | 30.5 | 25.6 | 16.7 |
| <u>Post Secondary</u> | 723 | 867 | 3 | 19.4 | 23.8 | 12.5 |
| Post-Secondary, Non-tertiary | 254 | 287 | 0 | 6.8 | 7.9 | 0.0 |
| Tertiary level- Associate Degree | 158 | 237 | 1 | 4.2 | 6.5 | 4.2 |
| Tertiary level- Bachelor Degree | 181 | 213 | 2 | 4.9 | 5.9 | 8.3 |
| Tertiary level- Graduate / Professional | 130 | 130 | 0 | 3.5 | 3.6 | 0.0 |
| <u>Other</u> | 49 | 82 | 0 | 1.3 | 2.3 | 0.0 |
| <u>Not Stated</u> | 237 | 246 | 8 | 6.4 | 6.8 | 33.3 |
| Total | 3722 | 3636 | 24 | 100 | 100 | 100 |

Table 3.2.12: Highest Examination Passed by Status, 2012, Percent.

| Highest Examination Passed | Status | | | | | | | % Total |
|--------------------------------------|-------------|--------------|------------|-------------|------------|----------------|--------------|------------|
| | Belonger | Non-belonger | Not Stated | Total | % Belonger | % Non-belonger | % Not Stated | |
| School Leaving Certificate | 278 | 258 | 28 | 564 | 13.1 | 15.7 | 21.2 | 14.5 |
| High School Certificate | 679 | 621 | 45 | 1345 | 31.9 | 37.8 | 34.1 | 34.5 |
| Cambridge School Certificate | 21 | 8 | 1 | 30 | 1.0 | 0.5 | 0.8 | 0.8 |
| CXC Basic | 124 | 40 | 6 | 170 | 5.8 | 2.4 | 4.5 | 4.4 |
| GCE "O" Levels or CXC | 248 | 51 | 6 | 305 | 11.7 | 3.1 | 4.5 | 7.8 |
| GCE "A" Levels, CAPE | 7 | 13 | 2 | 22 | 0.3 | 0.8 | 1.5 | 0.6 |
| College Certificate | 116 | 84 | 2 | 202 | 5.5 | 5.1 | 1.5 | 5.2 |
| College Diploma | 94 | 111 | 8 | 213 | 4.4 | 6.8 | 6.1 | 5.5 |
| Professional Certificate | 74 | 54 | 2 | 130 | 3.5 | 3.3 | 1.5 | 3.3 |
| Associate Degree | 197 | 97 | 10 | 304 | 9.3 | 5.9 | 7.6 | 7.8 |
| Bachelor's Degree | 182 | 193 | 13 | 388 | 8.6 | 11.8 | 9.8 | 9.9 |
| Post Graduate Certificate | 9 | 12 | 1 | 22 | 0.4 | 0.7 | 0.8 | 0.6 |
| Post Graduate Diploma | 11 | 19 | 1 | 31 | 0.5 | 1.2 | 0.8 | 0.8 |
| Higher Degree (Masters and Doctoral) | 88 | 80 | 7 | 175 | 4.1 | 4.9 | 5.3 | 4.5 |
| Total | 2128 | 1641 | 132 | 3901 | 100 | 100 | 100 | 100 |

Table 3.2.13: Highest Examination Passed by Island, 2012

| Highest Examination Passed | Island | | | | Total |
|--------------------------------------|-----------------------|------------------------------|---------------|-------------------------------------|-------------|
| | Grand Turk & Salt Cay | South Caicos & Ambergris Cay | Middle Caicos | North Caicos, Parrot Cay & Pine Cay | |
| School Leaving Certificate | 330 | 40 | 41 | 153 | 564 |
| High School Certificate | 856 | 194 | 30 | 265 | 1345 |
| Cambridge School Certificate | 22 | 7 | 0 | 1 | 30 |
| CXC Basic | 115 | 20 | 4 | 31 | 170 |
| GCE "O" Levels or CXC | 209 | 56 | 4 | 36 | 305 |
| GCE "A" Levels, CAPE | 13 | 4 | 0 | 5 | 22 |
| College Certificate | 151 | 15 | 2 | 34 | 202 |
| College Diploma | 135 | 28 | 1 | 49 | 213 |
| Professional Certificate | 105 | 10 | 0 | 15 | 130 |
| Associate Degree | 225 | 19 | 3 | 57 | 304 |
| Bachelor's Degree | 278 | 40 | 3 | 67 | 388 |
| Post Graduate Certificate | 19 | 2 | 0 | 1 | 22 |
| Post Graduate Diploma | 24 | 2 | 0 | 5 | 31 |
| Higher Degree (Masters and Doctoral) | 144 | 13 | 3 | 15 | 175 |
| Total | 2626 | 450 | 91 | 734 | 3901 |

Table 3.2.14: Highest Examination Passed by Island, 2012, Percent.

| Highest Examination Passed | Island | | | | Total |
|--------------------------------------|-----------------------|------------------------------|---------------|-------------------------------------|--------------|
| | Grand Turk & Salt Cay | South Caicos & Ambergris Cay | Middle Caicos | North Caicos, Parrot Cay & Pine Cay | |
| School Leaving Certificate | 12.6 | 8.9 | 45.1 | 20.8 | 14.5 |
| High School Certificate | 32.6 | 43.1 | 33.0 | 36.1 | 34.5 |
| Cambridge School Certificate | 0.8 | 1.6 | 0.0 | 0.1 | 0.8 |
| CXC Basic | 4.4 | 4.4 | 4.4 | 4.2 | 4.4 |
| GCE "O" Levels or CXC | 8.0 | 12.4 | 4.4 | 4.9 | 7.8 |
| GCE "A" Levels, CAPE | 0.5 | 0.9 | 0.0 | 0.7 | 0.6 |
| College Certificate | 5.8 | 3.3 | 2.2 | 4.6 | 5.2 |
| College Diploma | 5.1 | 6.2 | 1.1 | 6.7 | 5.5 |
| Professional Certificate | 4.0 | 2.2 | 0.0 | 2.0 | 3.3 |
| Associate Degree | 8.6 | 4.2 | 3.3 | 7.8 | 7.8 |
| Bachelor's Degree | 10.6 | 8.9 | 3.3 | 9.1 | 9.9 |
| Post Graduate Certificate | 0.7 | 0.4 | 0.0 | 0.1 | 0.6 |
| Post Graduate Diploma | 0.9 | 0.4 | 0.0 | 0.7 | 0.8 |
| Higher Degree (Masters and Doctoral) | 5.5 | 2.9 | 3.3 | 2.0 | 4.5 |
| Total | 100.0 | 100.0 | 100.0 | 100.0 | 100.0 |

Table 3.2.15: Highest Examination Passed by Sex, 2012, Percent.

| Highest Examination Passed | Sex | | | | | | | |
|--------------------------------------|-------------|-------------|------------|-------------|------------|------------|--------------|------------|
| | Male | Female | Not Stated | Total | Male % | Female % | Not Stated % | Total % |
| School Leaving Certificate | 313 | 250 | 1 | 564 | 15.9 | 13.0 | 12.5 | 14.5 |
| High School Certificate | 768 | 574 | 3 | 1345 | 39.1 | 29.8 | 37.5 | 34.5 |
| Cambridge School Certificate | 11 | 19 | 0 | 30 | 0.6 | 1.0 | 0.0 | 0.8 |
| CXC Basic | 79 | 91 | 0 | 170 | 4.0 | 4.7 | 0.0 | 4.4 |
| GCE "O" Levels or CXC | 132 | 172 | 1 | 305 | 6.7 | 8.9 | 12.5 | 7.8 |
| GCE "A" Levels, CAPE | 12 | 10 | 0 | 22 | 0.6 | 0.5 | 0.0 | 0.6 |
| College Certificate | 81 | 121 | 0 | 202 | 4.1 | 6.3 | 0.0 | 5.2 |
| College Diploma | 95 | 118 | 0 | 213 | 4.8 | 6.1 | 0.0 | 5.5 |
| Professional Certificate | 63 | 67 | 0 | 130 | 3.2 | 3.5 | 0.0 | 3.3 |
| Associate Degree | 117 | 186 | 1 | 304 | 6.0 | 9.6 | 12.5 | 7.8 |
| Bachelor's Degree | 180 | 206 | 2 | 388 | 9.2 | 10.7 | 25.0 | 9.9 |
| Post Graduate Certificate | 10 | 12 | 0 | 22 | 0.5 | 0.6 | 0.0 | 0.6 |
| Post Graduate Diploma | 17 | 14 | 0 | 31 | 0.9 | 0.7 | 0.0 | 0.8 |
| Higher Degree (Masters and Doctoral) | 87 | 88 | 0 | 175 | 4.4 | 4.6 | 0.0 | 4.5 |
| Total | 1965 | 1928 | 8 | 3901 | 100 | 100 | 100 | 100 |

Table 3.2.16: Highest Level of Training by Sex, 2012.

| Highest Level of Training | Sex | | |
|---------------------------|-------------|-------------|-------------|
| | Male | Female | Total |
| Cookery | 42 | 62 | 104 |
| Bartender | 24 | 25 | 49 |
| Waiter | 6 | 11 | 17 |
| Masonry | 105 | 0 | 105 |
| Carpentry | 163 | 0 | 163 |
| Plumbing | 43 | 0 | 43 |
| Electrician | 81 | 1 | 82 |
| Hospitality | 49 | 103 | 152 |
| Cosmetology | 3 | 53 | 56 |
| Business | 57 | 138 | 195 |
| Computing | 52 | 74 | 126 |
| Bookkeeping/Accounting | 27 | 73 | 100 |
| Security/Police | 133 | 46 | 179 |
| Other | 584 | 447 | 1031 |
| Total | 1369 | 1033 | 2402 |



DISABILITY, ILLNESSES



Table 3.3.1: Incidence of Disabilities by Type of Disability, Sex and Status

| Type of Disability | Belonger | | Non-Belonger | | Not Stated | | Total | |
|------------------------------------|-----------|------------|--------------|----------|------------|----------|-----------|------------|
| | Male | Female | Male | Female | Male | Female | Male | Female |
| Total Incidences | 80 | 102 | 3 | 6 | 2 | 4 | 85 | 112 |
| Lower-limb amputation or deformity | 8 | 5 | 0 | 0 | 0 | 0 | 8 | 5 |
| Upper-limb amputation or deformity | 3 | 4 | 0 | 1 | 0 | 0 | 3 | 5 |
| Severe arthritis | 8 | 26 | 0 | 2 | 1 | 2 | 9 | 30 |
| Significant hearing impairment | 9 | 11 | 1 | 0 | 0 | 0 | 10 | 11 |
| Significant vision impairment | 9 | 12 | 1 | 2 | 1 | 0 | 11 | 14 |
| Significant speech impairment | 6 | 5 | 0 | 0 | 0 | 0 | 6 | 5 |
| Mentally challenged | 15 | 6 | 0 | 1 | 0 | 0 | 15 | 7 |
| Other | 22 | 33 | 1 | 0 | 0 | 2 | 23 | 35 |

Table 3.3.2: Incident of Illnesses by Type of Illness, sex and Status.

| Type of Illnesses | Belonger | | Non-Belonger | | Not Stated | | Total | |
|-------------------|----------|--------|--------------|--------|------------|--------|-------|--------|
| | Male | Female | Male | Female | Male | Female | Male | Female |
| Total | 2226 | 2417 | 1512 | 1397 | 111 | 93 | 3849 | 3907 |
| Asthma | 54 | 61 | 19 | 32 | 4 | 2 | 77 | 95 |
| Diabetes | 89 | 164 | 26 | 41 | 1 | 6 | 116 | 211 |
| Heart disease | 14 | 31 | 3 | 5 | 2 | 1 | 19 | 37 |
| Cancer | 13 | 18 | 3 | 1 | 0 | 2 | 16 | 21 |
| Hypertension/HBP | 262 | 381 | 51 | 119 | 7 | 9 | 320 | 509 |
| Other | 164 | 265 | 30 | 47 | 7 | 9 | 201 | 321 |
| None | 1630 | 1497 | 1380 | 1152 | 90 | 64 | 3100 | 2713 |

Table 3.3.3: Incident of Illnesses by Type of Illness and Age Breakdown.

| Age | Asthma | Diabetes | Heart disease | Cancer | Hypertension/HBP | None | Other |
|--------------|--------|----------|---------------|--------|------------------|------|-------|
| Less than 30 | 113 | 13 | 10 | 1 | 16 | 2729 | 81 |
| 30 to 59 | 45 | 161 | 17 | 9 | 433 | 2853 | 219 |
| 60+ | 14 | 152 | 29 | 27 | 380 | 237 | 273 |
| Not Stated | 0 | 1 | 0 | 0 | 1 | 10 | 4 |



MARITAL AND UNION STATUS TABLES

Table 3.4.1: Union Status by Sex and Status, 2012

| Union Status | Male | Female | Belonger | Non-belonger | Not Stated |
|------------------------------------|------|--------|----------|--------------|------------|
| Married and living With Spouse | 850 | 846 | 1005 | 651 | 40 |
| Married but Spouse Lives Elsewhere | 535 | 202 | 197 | 519 | 21 |
| Live-in Partner | 263 | 284 | 207 | 321 | 19 |
| Visiting Partner | 203 | 198 | 221 | 173 | 7 |
| Not in Union | 1023 | 1235 | 1407 | 785 | 66 |

Table 3.4.2: Union Status by Sex and Status, 2012, (Percent)

| Union Status | Male | Female | Belonger | Non-belonger | Not Stated |
|------------------------------------|------|--------|----------|--------------|------------|
| Married and living With Spouse | 29.6 | 30.6 | 33.1 | 26.6 | 26.1 |
| Married but Spouse Lives Elsewhere | 18.6 | 7.3 | 6.5 | 21.2 | 13.7 |
| Live-in Partner | 9.2 | 10.3 | 6.8 | 13.1 | 12.4 |
| Visiting Partner | 7.1 | 7.2 | 7.3 | 7.1 | 4.6 |
| Not in Union | 35.6 | 44.7 | 46.3 | 32.1 | 43.1 |

Table 3.4.3: Marital Status by Island Sex and Status, 2012.

| Island | Sex | Marital Status | | | | | | Total |
|-------------------------------------|--------|----------------|---------|----------|-----------|---------|------------|-------|
| | | Never Married | Married | Divorced | Separated | Widowed | Not Stated | |
| Grand Turk & Salt Cay | Male | 760 | 812 | 81 | 35 | 50 | 15 | 1761 |
| | Female | 959 | 669 | 97 | 42 | 106 | 10 | 1883 |
| | Total | 1719 | 1489 | 178 | 77 | 156 | 25 | 3644 |
| South Caicos | Male | 188 | 229 | 15 | 14 | 13 | 1 | 460 |
| | Female | 181 | 145 | 22 | 10 | 40 | 3 | 401 |
| | Total | 369 | 374 | 37 | 24 | 53 | 4 | 861 |
| Middle Caicos | Male | 31 | 30 | 1 | 1 | 6 | 0 | 69 |
| | Female | 22 | 30 | 2 | 0 | 11 | 0 | 65 |
| | Total | 53 | 60 | 3 | 1 | 17 | 0 | 134 |
| North Caicos, Parrot Cay & Pine Cay | Male | 272 | 321 | 18 | 17 | 17 | 2 | 647 |
| | Female | 211 | 195 | 23 | 17 | 31 | 0 | 477 |
| | Total | 483 | 516 | 41 | 34 | 48 | 2 | 1124 |
| Total | Male | 1251 | 1400 | 115 | 67 | 86 | 18 | 2937 |
| | Female | 1373 | 1039 | 144 | 69 | 188 | 13 | 2826 |
| | Total | 2624 | 2439 | 259 | 136 | 274 | 31 | 5763 |



FERTILITY TABLES

Table 3.5.1 Number of Live Births by Age Group, 2012.

| Number of Live Births | Age Group | | | | Total |
|-----------------------|------------|-------------|------------|------------|-------------|
| | Under 20 | 20-44 | 45-64 | 65+ | |
| None | 213 | 340 | 77 | 26 | 656 |
| 1 | 5 | 359 | 109 | 22 | 495 |
| 2 | 3 | 333 | 179 | 24 | 539 |
| 3 | 0 | 200 | 160 | 23 | 383 |
| 4 | 0 | 106 | 117 | 28 | 251 |
| 5 | 0 | 46 | 79 | 28 | 153 |
| 6 | 0 | 19 | 37 | 24 | 80 |
| 7 | 0 | 3 | 23 | 20 | 46 |
| 8 | 0 | 2 | 11 | 13 | 26 |
| 9 | 0 | 0 | 3 | 17 | 20 |
| 10++ | 0 | 0 | 8 | 46 | 54 |
| Total | 221 | 1408 | 803 | 271 | 2703 |

Excludes Providenciales

