

302 Eurasian Skylark

Put your logo here



Skylark. Autumn (25-X).

SEXING

Plumage of both sexes alike. Size can be helpful in extreme birds: **male** with wing longer than 110 mm; **female** with wing shorter than 105 mm.

AGEING

2 age groups can be recognized:

Juvenile with distinct pale edges on wing coverts; fresh plumage.

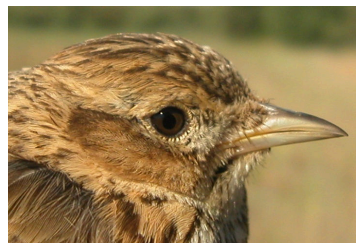
Adult without prominent pale edges on wing coverts; worn plumage in **spring**.

After **postbreeding/postjuvenile** moults ageing is not possible using plumage pattern.

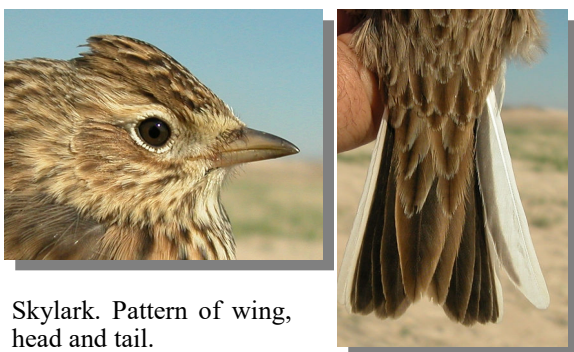
EURASIAN SKYLARK (*Alauda arvensis*)

IDENTIFICATION

16-18 cm. Brown plumage, streaked; outermost tail feathers white; wing with a white band on tip; head with a little crest; pale supercilium; **Juveniles** have white edges on feathers.



Skylark. Ageing. Pattern of head: top adult; bottom juvenile.



Skylark. Pattern of wing, head and tail.



Skylark. Ageing. Pattern of upperparts: left adult; right juvenile.

SIMILAR SPECIES

This species is unmistakable due to its crest on head, white band on wing and white outermost tail feathers.

302 Eurasian Skylark

Put your logo here



Skylark. Summer. Juvenile (15-VII).

Skylark. Ageing. Pattern of wing covers: top adult; bottom juvenile.

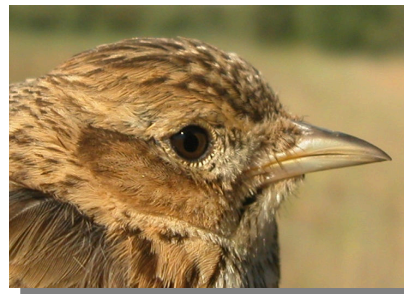
MOULT

Complete **postbreeding** and **postjuvenile** moults, usually finished in October.



PHENOLOGY

I	II	III	IV	V	VI	VII	VIII	IX	X	XI	XII



Skylark. Pattern of head: top in autumn (25-X); middle adult in summer (16-VI); bottom juvenile (15-VII).

STATUS IN ARAGON

Resident, with contribution of wintering European birds.



Skylark. Summer. Adult (16-VI).



302 Eurasian Skylark

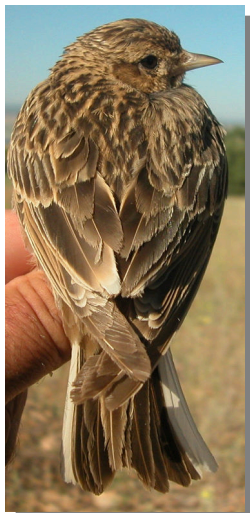
Put your logo here



Skylark. Breast pattern: top left in autumn (25-X); top right adult in summer (16-VI); left juvenile (15-VII).



Skylark. Tail pattern: top left in autumn (25-X); top right adult in summer (16-VI); left juvenile (15-VII).



Skylark. Legs pattern: left adult (25-X); right juvenile (15-VII)



Skylark. Pattern of upperparts: top left in autumn (25-X); top right adult in summer (16-VI); left juvenile (15-VII).



Skylark. Autumn: pattern of wing (25-X).

302 Eurasian Skylark

Put your logo here



Skylark. Summer. Adult: pattern of wing (16-VI).



Skylark. Summer. Juvenile: pattern of wing (15-VII).