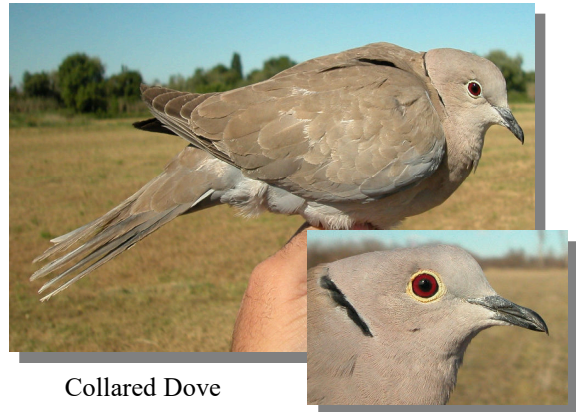


263 European Turtle Dove

Put your logo here



Collared Dove

Turtle Dove. Adult. Female (22-VI).

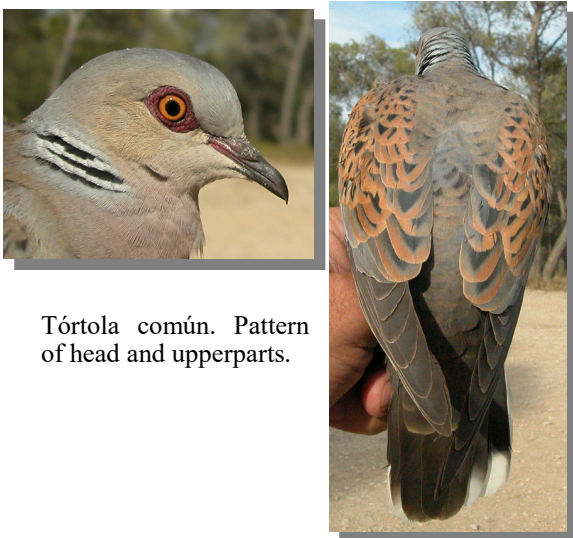
EUROPEAN TURTLE DOVE (*Streptopelia turtur*)

IDENTIFICATION

26-29 cm. Pale brown upperparts, more grey on the rump; grey and blue-pinkish underparts; wing coverts fringed rufous with black centre; black tail with white edges; grey head and neck; black and white collar on neck; reddish iris and legs.

SEXING

Male with intense bluish grey crown and nape; salmon pink breast. **Female** with grey crown tipped sandy brown; buff grey forehead; brown nape with the same colour than mantle; pinkish breast tinged buff (**CAUTION:** some birds cannot be sexed since these differences are not always evident). **Juveniles** cannot be sexed using plumage pattern.



Tórtola común. Pattern of head and upperparts.



Turtle Dove. Sexing. Pattern of head: top male; bottom female.

SIMILAR SPECIES

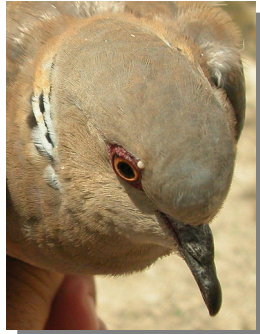
Similar in size to **Collared Dove**, which has a different collar pattern and wing coverts without rufous fringes.



Turtle Dove. Sexing. Pattern of nape: left male; right female.

263 European Turtle Dove

Put your logo here



Turtle Dove. Sexing. Pattern of crown: left male; right female.



Turtle Dove. Sexing. Pattern of breast: left male; right female.



Turtle Dove. Ageing. Pattern of neck and colour of iris: top adult; bottom juvenile.



Turtle Dove. Ageing. Pattern of wing coverts: top adult; bottom juvenile.

AGEING

3 age groups can be recognized:

Juvenile with lesser and median coverts rufous grey with pale terminal fringes; coverts under alula with brown-rufous tips; neck without black and white collar; pale grey or pinkish legs; brown iris.

2nd year only if some **juvenile** secondary or primary retained, shorter and browner than neighbouring feathers; sometimes with some coverts under alula with brown-rufous tips.

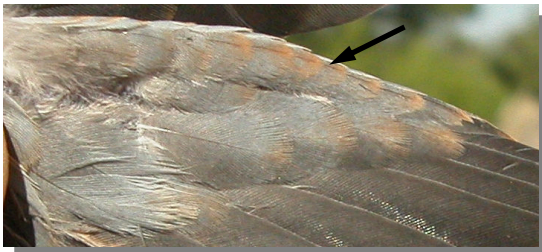
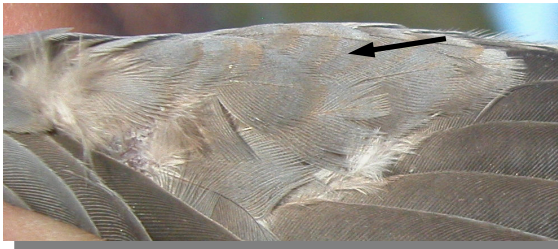
Adult with lesser and median coverts black with rufous fringes; bluish coverts under alula without buff tips; flight feathers with the same age; neck with black and white collar; orange legs; orange red iris.



Turtle Dove. Ageing. Colour of legs: left adult; right juvenile.

263 European Turtle Dove

Put your logo here



Turtle Dove. Ageing. Pattern of coverts under alula: top adult; middle 2nd year; bottom juvenile.



Turtle Dove. Adult. Male (07-VI).



Turtle Dove . Juvenile (14-VII).

MOULT

Complete **postbreeding** and **postjuvenile** moults, starting between August and September (some **adults** in July), usually suspended before migration and finished in wintering sites. Some **juvenile** birds can retain wing coverts under alula and some central secondaries and/or primaries.

PHENOLOGY

I	II	III	IV	V	VI	VII	VIII	IX	X	XI	XII

STATUS IN ARAGON

Summer visitor. Widely distributed throughout the Region, absent only from the most deforested areas of the Pyrenees and the Ebro Basin.



Turtle Dove. Head pattern and iris colour: top male (07-VI); middle female (22-VI); bottom juvenile (14-VII).

263 European Turtle Dove

Put your logo here



Turtle Dove. Legs pattern: left adult (21-V); right juvenile (29-VII).



Turtle Dove. Breast pattern: top left male (21-V); top right female (21-V); left juvenile (14-VII)..



Turtle Dove. Crown pattern: top left male (07-VI); top right female (21-V); left juvenile (29-VII).



Turtle Dove. Upperparts pattern: left adult (25-V); right juvenile (24-VII).



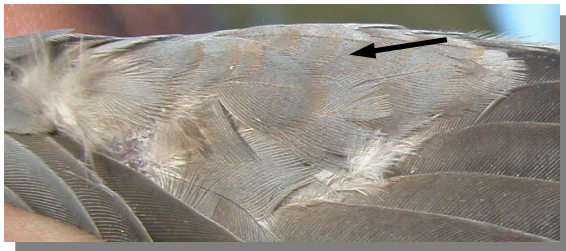
Turtle Dove. Nape pattern: top left male (25-V); top right female (25-V); left juvenile (29-VII),.



Turtle Dove. Adult: pattern of coverts under alula (25-V).

263 European Turtle Dove

Put your logo here



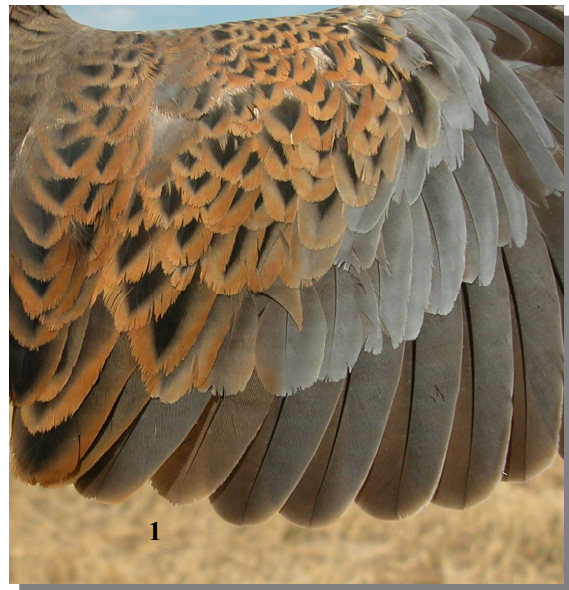
Turtle Dove. 2nd year: pattern of coverts under alula (12-VII).



Turtle Dove. Juvenile: pattern of coverts under alula (29-VII).



Turtle Dove. Adult: pattern of secondaries (25-V).



Turtle Dove. 2nd year: pattern of secondaries (1 juvenile feather) (14-VII).



Turtle Dove. Juvenile: pattern of secondaries (14-VII).



Turtle Dove. Adult: pattern of wing (25-V).

263 European Turtle Dove

Put your logo here



Turtle Dove. 2nd year: pattern of wing (1 juvenile feather) (14-VII).



Turtle Dove. Juvenile: pattern of wing (14-VII).